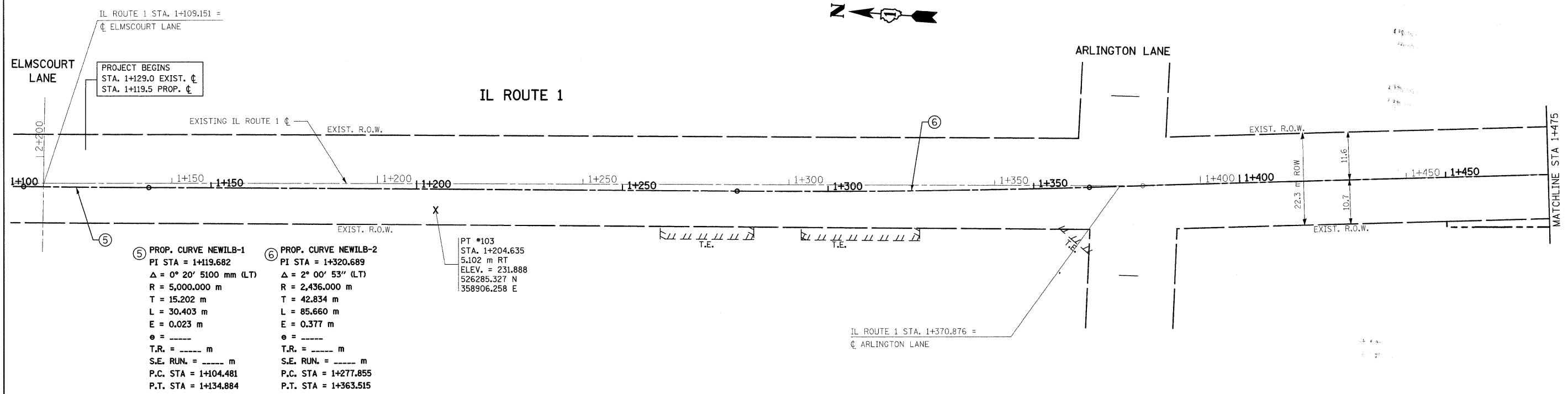


F.A.P. RTE.	SECTION	COUNTY	TOTAL SHEETS	SHEET NO.
876	9Y-RS-7	WILL	100	10
STA. 1+100		TO STA. 1+475		
FED. ROAD DIST. NO. 1		ILLINOIS FED. AID PROJECT		
CONTRACT NO. 60E52				



⑤ PROP. CURVE NEWILB-1
 PI STA = 1+119.682
 Δ = 0° 20' 51.00" (LT)
 R = 5,000.000 m
 T = 15.202 m
 L = 30.403 m
 E = 0.023 m
 e = -----
 T.R. = ----- m
 S.E. RUN. = ----- m
 P.C. STA = 1+104.481
 P.T. STA = 1+134.884

⑥ PROP. CURVE NEWILB-2
 PI STA = 1+320.689
 Δ = 2° 00' 53" (LT)
 R = 2,436.000 m
 T = 42.834 m
 L = 85.660 m
 E = 0.377 m
 e = -----
 T.R. = ----- m
 S.E. RUN. = ----- m
 P.C. STA = 1+277.855
 P.T. STA = 1+363.515

PT #103
 STA. 1+204.635
 5.102 m RT
 ELEV. = 231.888
 526285.327 N
 358906.258 E

REVISIONS		ILLINOIS DEPARTMENT OF TRANSPORTATION
NAME	DATE	
		IL. ROUTE 1 EXISTING & PROPOSED ALIGNMENT & TIE PLAN
SCALE 1:500		DRAWN BY
DATE 9/3/2008		CHECKED BY