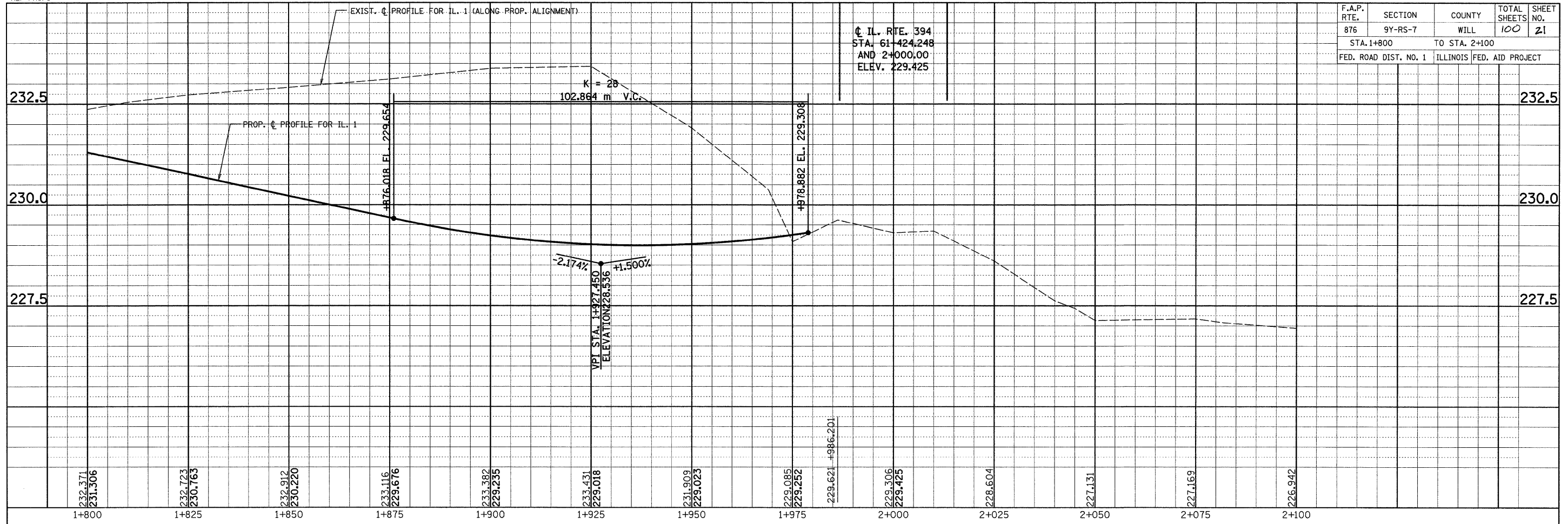


F.A.P. RTE.	SECTION	COUNTY	TOTAL SHEETS	SHEET NO.
876	9Y-RS-7	WILL	100	21
STA. 1+800 TO STA. 2+100			ILLINOIS FED. AID PROJECT	

IL. RTE. 394
 STA. 61+424.248
 AND 2+000.00
 ELEV. 229.425



**EXISTING AND PROPOSED
 PROFILE FOR IL. ROUTE 1**

SCALE: VERT. 1:50
 HORIZ. 1:500
 DATE: 9/3/2008

DRAWN BY:
 CHECKED BY: