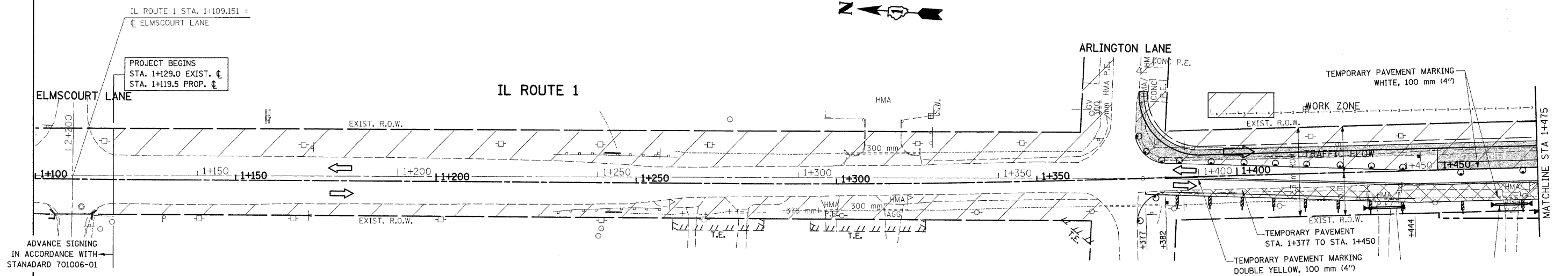

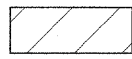
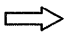


F.A.P. RTE.	SECTION	COUNTY	TOTAL SHEETS	SHEET NO.
876	9Y-RS-7	WILL	100	24
STA. 1+100		TO STA. 1+475		
FED. ROAD DIST. NO. 1		ILLINOIS FED. AID PROJECT		
CONTRACT NO. 60E52				



ADVANCE SIGNING  
IN ACCORDANCE WITH  
STANADARD 701006-01

**LEGEND**

-  PAVEMENT TO BE CONSTRUCTED
-  WORK ZONE
-  TRAFFIC FLOW

REVISIONS	
NAME	DATE

ILLINOIS DEPARTMENT OF TRANSPORTATION  
**SUGGESTED  
 MAINTENANCE OF TRAFFIC  
 IL. 1  
 STAGE I**

SCALE 1:500  
 DATE 9/3/2008

DRAWN BY  
 CHECKED BY