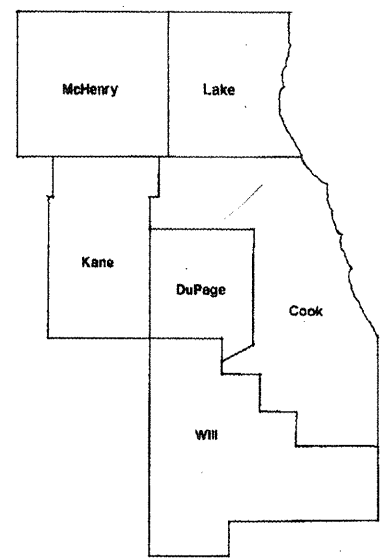


60E76

ROUTE	SECTION	COUNTY	TOTAL SHEETS	SHEET NUMBER
VARIOUS	2008-035 LS	VARIOUS	29	1

D-91-522-08

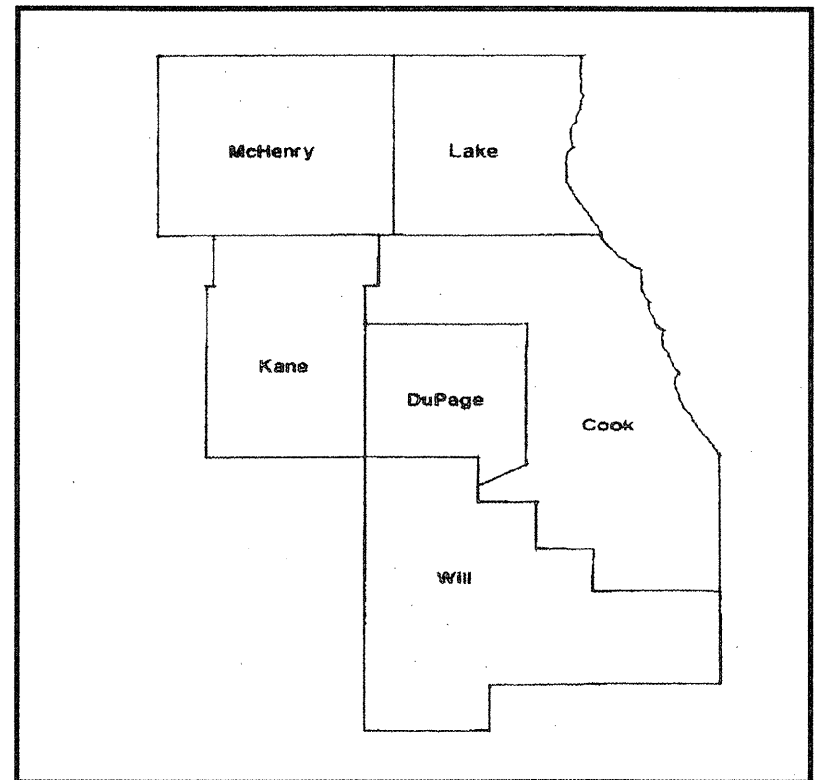
STATE OF ILLINOIS  
DEPARTMENT OF TRANSPORTATION  
DIVISION OF HIGHWAYS  
DISTRICT ONE  
**PROPOSED HIGHWAY PLANS**  
ROUTE: VARIOUS  
SECTION: 2008-035 LS  
LANDSCAPE REPAIR AND RENOVATION  
VARIOUS COUNTIES  
JOB NO.: C-91-522-08



LOCATION OF IMPROVEMENT INDICATED THUS:

FOR INDEX OF SHEETS SEE PAGE 2

**IMPROVEMENT IS IN VARIOUS  
LOCATIONS WITHIN DISTRICT  
ONE**



STATE OF ILLINOIS  
DEPARTMENT OF TRANSPORTATION  
DIVISION OF HIGHWAYS  
SUBMITTED: AUGUST 14, 2008  
Diana M. O'Keefe  
DEPUTY DIRECTOR OF HIGHWAYS, REGION ENGINEER  
October 3, 2008  
Eric E. Harn  
Interim ENGINEER OF DESIGN AND ENVIRONMENT  
October 3, 2008  
Christine M. Reed  
DIRECTOR OF HIGHWAYS, CHIEF ENGINEER

**PRINTED BY THE AUTHORITY  
OF THE STATE OF ILLINOIS**

J.U.L.I.E.: JOINT UTILITY LOCATION  
INFORMATION FOR EXCAVATION  
(800) 892-0123

DISTRICT ONE BUREAU OF MAINTENANCE: J. STUMRNER  
MAINTENANCE LANDSCAPE DESIGNER: R. WANNER / M. DEL ROSARIO (847) 705-4171

CONTRACT 60E76

ROUTE	SECTION	COUNTY	TOTAL SHEETS	SHEET NUMBER
VARIOUS	2008-035 LS	VARIOUS	29	2

CONTRACT 60E76

**INDEX OF SHEETS**

**STATE STANDARDS**

1	TITLE SHEET	701001-01	701006-02
2	INDEX OF SHEETS, STATE STANDARDS AND GENERAL NOTES	701101-01	701106-01
3-5	SUMMARY OF QUANTITIES		701901
6	CALENDAR OF CONSTRUCTION		
7	LOCATION SUMMARY		
8-28	LAYOUT PLAN SHEETS		
29	TC 17 TRAFFIC CONTROL DETAILS FOR FREEWAY SHOULDER CLOSURES PARTIAL RAMP CLOSURES		

**GENERAL NOTES**

FOR ARTERIALS THE CONTRACTOR SHALL CONTACT THE DISTRICT ONE TRAFFIC CONTROL SUPERVISOR AT (847) 705-4470 A MINIMUM OF 72 HOURS IN ADVANCE OF BEGINNING WORK.

BEFORE STARTING ANY EXCAVATION THE CONTRACTOR SHALL CALL THE STATE ELECTRICAL MAINTENANCE CONTRACTOR AT (773) 287-7600, EXTENSION 601, FOR FIELD LOCATIONS OF BURIED CABLE.

THE CONTRACTOR SHALL ADHERE TO LIMITS OF RESTORATION SHOWN. AREAS OUTSIDE THESE LIMITS THAT ARE DAMAGED OR DISTURBED BY THE CONTRACTOR, SHALL BE RESTORED AT THE CONTRACTOR'S OWN EXPENSE. NO ADDITIONAL COMPENSATION WILL BE ALLOWED.

**ILLINOIS DEPARTMENT OF TRANSPORTATION**

LANDSCAPE REPAIR  
INDEX OF SHEETS  
GENERAL NOTES  
STATE STANDARDS

Rev.

ROUTE	SECTION	COUNTY	TOTAL SHEETS	SHEET NUMBER
VARIOUS	2008-035 LS	VARIOUS	29	3

CONTRACT 60E76

PAY ITEM	DESCRIPTION	UNIT	Y003	
			100% STATE URBAN TOTAL	MCHD FUND CONTRACT MAINT FUND
A2007218	TREE, ROBINIA PSEUDOACACIA 'CHICAGO BLUE,' (CHICAGO BLUE LOCUST), 2" CALIPER, BALLED AND BURLAPPED	EACH	20	0 20
A2000316	TREE, ACER MIYABEI MORTON (STATE STREET MIYABEI MAPLE), 2" CALIPER, BALLED AND BURLAPPED	EACH	20	0 20
A2007210	TREE, QUERCUS X MACDANIELLI CLEMONS (HERITAGE OAK), 2" CALIPER, BALLED AND BURLAPPED	EACH	15	0 15
C2C04820	SHRUB, PHYSOCARPA OPULIFOLIUS LADY IN RED (LADY IN RED COMMON NINEBARK), 18" HEIGHT, 3-GALLON CONTAINER	EACH	60	0 60
21101615	TOPSOIL FURNISH AND PLACE, 4"	SQ YD	3746.8	3650 96.8
25000210	SEEDING, CLASS 2A	ACRE	0.77	0.75 0.02
25000400	NITROGEN FERTILIZER NUTRIENT	POUND	95	70 25
25000500	PHOSPORUS FERTILIZER NUTRIENT	POUND	86	70 16
25000600	POTASSIUM FERTILIZER NUTRIENT	POUND	81	70 11
25001800	SEEDING, CLASS 4 (MODIFIED)	ACRE	2	0 2
25001820	SEEDING, CLASS 5 (MODIFIED)	ACRE	2	0 2
25003321	INTERSEEDING, CLASS 5 (MODIFIED)	ACRE	2	0 2
25100630	EROSION CONTROL BLANKET	SQ YD	13,414	3650 9764
25200110	SODDING, SALT TOLERANT	SQ YD	300	300 0
25200200	SUPPLEMENTAL WATERING	UNIT	25	0 25
A2001716	TREE, ACER SACCHARUM (SUGAR MAPLE), 2" CALIPER, BALLED AND BURLAPPED	EACH	2	0 2
A2002016	TREE, AESCULUS GLABRA (OHIO BUCKEYE), 2" CALIPER, BALLED AND BURLAPPED	EACH	30	0 30
A2002816	TREE, CATALPA SPECIOSA (NORTHERN CATALPA), 2" CALIPER, BALLED AND BURLAPPED	EACH	35	0 35
A2002916	TREE, CELTIS OCCIDENTALIS (COMMON HACKBERRY), 2" CALIPER, BALLED AND BURLAPPED	EACH	35	0 35
A2004716	TREE, GLEDITSIA TRIACANTHOS INERMIS SHADEMASTER (SHADEMASTER THORNLESS COMMON HONEYLOCUST), 2" CALIPER, BALLED AND BURLAPPED	EACH	28	3 25
A2005016	TREE, GYMNOCLADUS DIOICUS (KENTUCKY COFFEETREE), 2" CALIPER, BALLED AND BURLAPPED	EACH	51	1 50
A2006614	TREE, QUERCUS IMBRICARIA (SHINGLE OAK), 1-3/4" CALIPER, BALLED AND BURLAPPED	EACH	25	0 25

ILLINOIS DEPARTMENT OF TRANSPORTATION

SUMMARY OF QUANTITIES

Rev.

ROUTE	SECTION	COUNTY	TOTAL SHEETS	SHEET NUMBER
VARIOUS	2008-035 LS	VARIOUS	29	4

CONTRACT 60E76

PAY ITEM	DESCRIPTION	UNIT	Y003		
			URBAN 100% STATE TOTAL	MCHD FUND	CONTRACT MAINT FUND
A2006714	TREE, QUERCUS MACROCARPA (BUR OAK), 1-3/4" CALIPER, BALLED AND BURLAPPED	EACH	36	3	33
B2006116	TREE, SYRINGA PEKINENSIS MORTON (CHINA SNOW PEKING LILAC), 2" CALIPER, TREE FORM, BALLED AND BURLAPPED	EACH	20	0	20
B2006316	TREE, SYRINGA RETICULATA IVORY SILK (IVORY SILK JAPANESE TREE LILAC), 2" CALIPER, TREE FORM, BALLED AND BURLAPPED	EACH	15	10	5
D2001960	EVERGREEN, PICEA GLAUCA DENSATA (BLACK HILLS SPRUCE), 5' HEIGHT, BALLED AND BURLAPPED	EACH	15	0	15
D2002160	EVERGREEN, PICEA PUNGENS (COLORADO SPRUCE), 5' HEIGHT, BALLED AND BURLAPPED	EACH	10	1	9
D2002460	EVERGREEN, PINUS FLEXILIS VANDERWOLF'S PYRAMID (VANDERWOLF'S PYRAMID LIMBER PINE), 5' HEIGHT, BALLED AND BURLAPPED	EACH	20	0	20
D2002760	EVERGREEN, PINUS NIGRA (AUSTRIAN PINE), 5' HEIGHT, BALLED AND BURLAPPED	EACH	15	1	14
E20200G1	VINE-PARTHENOCISSUS QUINQUEFOLIA (VIRGINIA CREEPER), 1-GALLON POT	EACH	650	0	650
K0026810	SHRUB CARE	EACH	15	0	15
K0026850	PERENNIAL PLANT CARE	SQ YD	2000	0	2000
K0030450	PERENNIAL PLANTS, DAFFODIL BULBS	UNIT	50	0	50
K0036120	MULCH PLACEMENT 4"	SQ YD	31	0	31
K1005481	SHREDDED BARK MATERIAL 3"	SQ YD	500	0	500
X0301407	PERENNIAL PLANTS, GALLON POT	UNIT	46.25	0	46.25
X0322856	WEED CONTROL, NON-SELECTIVE AND NON-RESIDUAL	GALLON	5	0	5
X0322953	INTERSEEDING, CLASS 4 (MODIFIED)	ACRE	2	0	2
X0324097	COARSE SAND PLACEMENT, 2"	SQ YD	244	0	244
X0325604	WEED CONTROL, PRE-EMERGENT HERBICIDE	GALLON	10	0	10
XX004861	TREE, ULMUS CARPINIFOLIA ACCOLADE MORTON (ACCOLADE ELM), 2 1/2" CALIPER, BALLED AND BURLAPPED	EACH	23	3	20
B2005415	TREE, PRUNUS VIRGINIANA SCHUBERT (CANADA RED CHOKECHERRY), 5' HEIGHT, CLUMP FORM, BALLED AND BURLAPPED	EACH	23	3	20

ILLINOIS DEPARTMENT OF TRANSPORTATION  
SUMMARY OF QUANTITIES

Rev.

<b>ROUTE</b>	<b>SECTION</b>	<b>COUNTY</b>	<b>TOTAL SHEETS</b>	<b>SHEET NUMBER</b>
VARIOUS	2008-035 LS	VARIOUS	29	5

PAY ITEM	DESCRIPTION	UNIT	URBAN 100% STATE TOTAL	Y003	
				MCHD FUND	CONTRACT MAINT FUND
C2C03726	SHRUB, HYPERICUM KALMIANUM AMES (AMES KALM ST. JOHNSWORT), 18" HEIGHT, 5-GALLON CONTAINER	EACH	100	0	100
C2C09816	SHRUB, SPIREA BETULIFOLIA TOR (BIRCH LEAF SPIREA), 18" HEIGHT, 5-GALLON CONTAINER	EACH	100	0	100
C2C15761	SHRUB, SPIREA JAPONICA NEON FLASH (NEON FLASH JAPANESE SPIREA), 18" HEIGHT, 5-GALLON CONTAINER	EACH	100	0	100

CONTRACT 60E76

ILLINOIS DEPARTMENT OF TRANSPORTATION

SUMMARY OF QUANTITIES

# Calendar of Construction

<b>ROUTE</b>	<b>SECTION</b>	<b>COUNTY</b>	<b>TOTAL SHEETS</b>	<b>SHEET NUMBER</b>
VARIOUS	2008-035 LS	VARIOUS	29	6

CONTRACT 60E76

Phases	Phases I		Phase II		Phase III		Phase IV		Phase V		Phase VI		Phase VII	
	December	January	February	March	April	May	June	July	August	September	October	November		
<b>Plant Material</b>														
Submit completed plant inspection forms to IDOT by Jan 31	█	█												
Place order for perennials	█	█												
Place order for bulbs								█	█					
<b>Seeding</b>														
Seeding, Class 2A Spring: March 15 - June 1 Fall: Aug 1 - Sept 15 Dormant: Nov 1 - March 15	█	█	█	█	█	█			█	█			█	█
Seeding, Class 4A (Modified) Dormant: Nov 1 - March 15	█	█	█	█									█	█
Interseeding, Class 4A (Modified) Dormant: Nov 1 - March 15	█	█	█	█									█	█
Seeding, Class 5 (Modified) Dormant: November 1 - March 15	█	█	█	█									█	█
Interseeding, Class 5 (Modified) Dormant: Nov 1 - March 15	█	█	█	█									█	█
<b>Perennial Bed Preparation</b>														
Turf Removal (Round-up or sod cutting) Round-Up: 2 weeks prior to planting						█	█		█	█				
Sand Placement						█	█		█	█				
Fertilizer Nutrients Placement						█	█		█	█				
<b>Perennial Plants</b>														
Woodland Type Plants: April 1 - May 15					█	█								
Ornamental Herbaceous, Prairie, Wetland Emergent & Sedge Meadow Plants: May 1 - June 15 or Aug 15 - Sept 15						█	█		█	█				
Bulbs: Oct 15 - Nov 30													█	█
<b>Tree / Shrub Planting</b>														
Spring plantings of balled and burlapped & container stock: March 15 - May 15				█	█									
Seedlings, broadleaf evergreens, vines & willow, poplar, oak, alder, birch, hawthorn, red maple, cherry & pear only in spring: March 15 - May 15				█	█									
Evergreens (spring): March 15 - April 30				█	█									
Fall planting of balled and burlapped: Oct 15 - Nov 30													█	█
Evergreens (fall): August 15 - Oct 15										█	█			
<b>Plant Care</b>														
Perennial Plant Care: May 15 - June 15							█	█						
Shrub Care: May 15 - May 31							█	█						
Mulch Placement: May 15 - May 31							█	█						
Supplemental Watering: as determined by the RE during May 15 - Sept 15							█	█	█	█				
<b>Herbicides</b>														
Pre-emergent: March 1 - March 15				█										

ILLINOIS DEPARTMENT OF TRANSPORTATION  
CALENDAR OF CONSTRUCTION

ROUTE	SECTION	COUNTY	TOTAL SHEETS	SHEET NUMBER
VARIOUS	2008-035 LS	VARIOUS	29	7

**LOCATION SUMMARY**

**CONTRACT 60E76**

COUNTY	CITY/TOWN	CLAIM #	SHEET #	GENERAL LOCATION
MCHENRY	HARVARD	736339	8	IL 173, WEST OF HARVARD HILLS RD.
LAKE	LIBERTYVILLE	734943	9	US 45, SOUTH OF WINCHESTER RD.
LAKE	LAKE FOREST	N/A	10	US 41 & 20 MARION ST.
COOK	MORTON GROVE	N/A	11	I-94 WEST: SOUTH OF GROSS POINT RD.
COOK	CHICAGO	N/A	12	VARIOUS LOCATIONS ON I-90, I-290, I-94
COOK	CHICAGO	735042	13	I-90 EAST: DIVISION ST. EXIT RAMP
COOK	CHICAGO	734729 734745	14	I-290 WEST: CALIFORNIA SLIP RAMP
COOK	WESTCHESTER	N/A	15	IL 38: WEST OF US 12/20/45
COOK	CHICAGO	N/A	16	CERMAK RD & FRANKLIN STREET CONNECTOR
COOK	CHICAGO	N/A	17-18	26 <sup>TH</sup> ST. BETWEEN PEORIA ST. & GREEN ST.
COOK	CHICAGO	N/A	19	ARCHER AVE.: PITNEY CT. TO LOCK ST.
COOK	CHICAGO	734745	20	I-55 NORTH: PULASKI RD. ENTRANCE RAMP
COOK	CHICAGO	N/A	21	IL 43 (HARLEM AVE) & 53 <sup>RD</sup> ST.
COOK	FLOSSMOOR	N/A	22	WESTERN AVE. & BROOKWOOD DR.
COOK	CHICAGO	734752	23	I-94 WEST: 103 <sup>RD</sup> ST. EXIT RAMP
COOK	COUNTRY CLUB HILLS	737398	24	I-80 WEST & I-57 NORTH
COOK	TROY TOWNSHIP	N/A	25-26	I-55 NORTH AT I-80 EAST (SE QUAD)
COOK	TROY TOWNSHIP	N/A	27	I-55 NORTH AT I-80 EAST
VARIOUS	VARIOUS	N/A	28	VARIOUS LOCATIONS

ILLINOIS DEPARTMENT OF TRANSPORTATION  
  
LOCATION SUMMARY

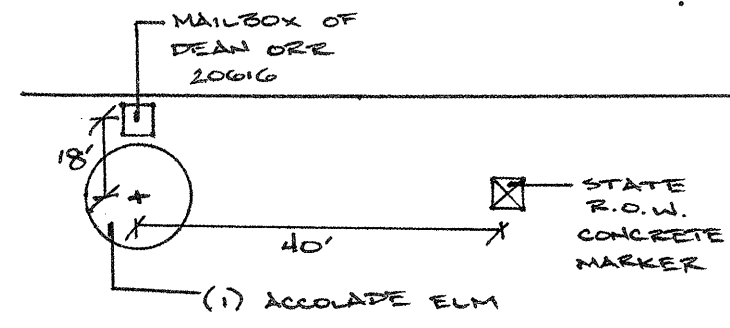
ROUTE	SECTION	COUNTY	TOTAL SHEETS	SHEET NUMBER
VARIOUS	2008-035 LS	VARIOUS	29	8

CONTRACT 60E76



HARVARD HILLS RD

IL 173



NOT DRAWN TO SCALE

**GENERAL LOCATION MAP**

COUNTY: MCHENRY  
CLAIM: 736339

CITY/TOWN: HARVARD

**SCHEDULE OF LANDSCAPE ITEMS**

DESCRIPTION	QTY/UNIT
<b>ULMUS 'MORTON'</b> ACCOLADE ELM	1 EACH

ILLINOIS DEPARTMENT OF TRANSPORTATION  
  
LANDSCAPE REPAIR LOCATION AND  
LAYOUT PLAN

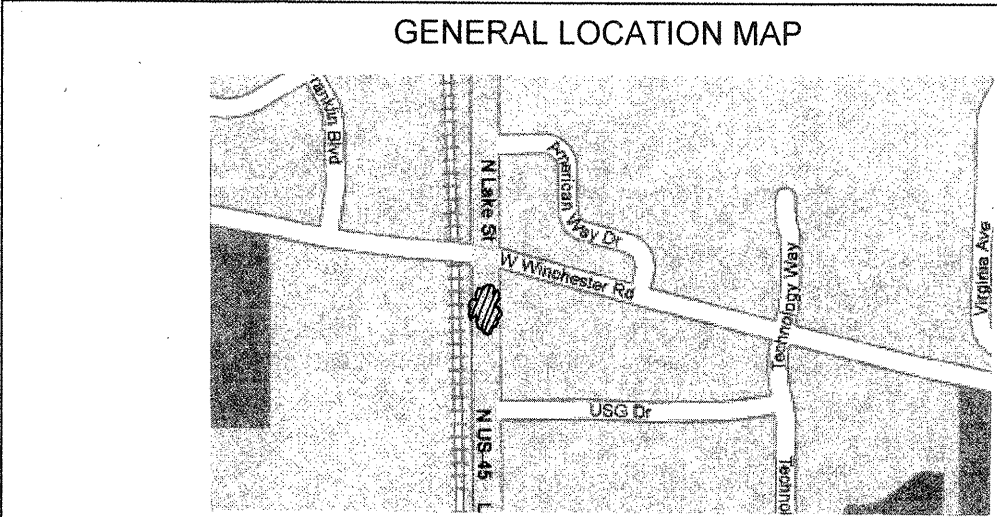
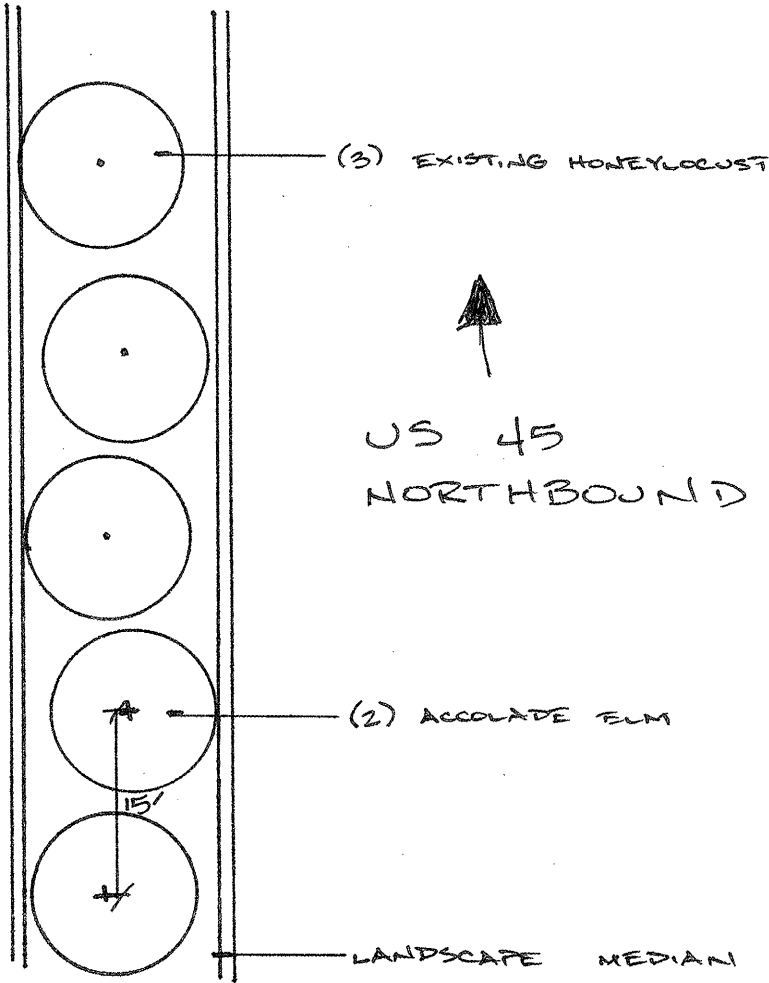


ROUTE	SECTION	COUNTY	TOTAL SHEETS	SHEET NUMBER
VARIOUS	2008-035 LS	VARIOUS	29	9

CONTRACT 60E76



US 45  
SOUTHBOUND



COUNTY: LAKE  
CLAIM: 734943

CITY/TOWN: LIBERTYVILLE

**SCHEDULE OF LANDSCAPE ITEMS**  
DESCRIPTION QTY/UNIT

<b>ULMUS 'MORTON'</b> ACCOLADE ELM	2 EACH
---------------------------------------	--------

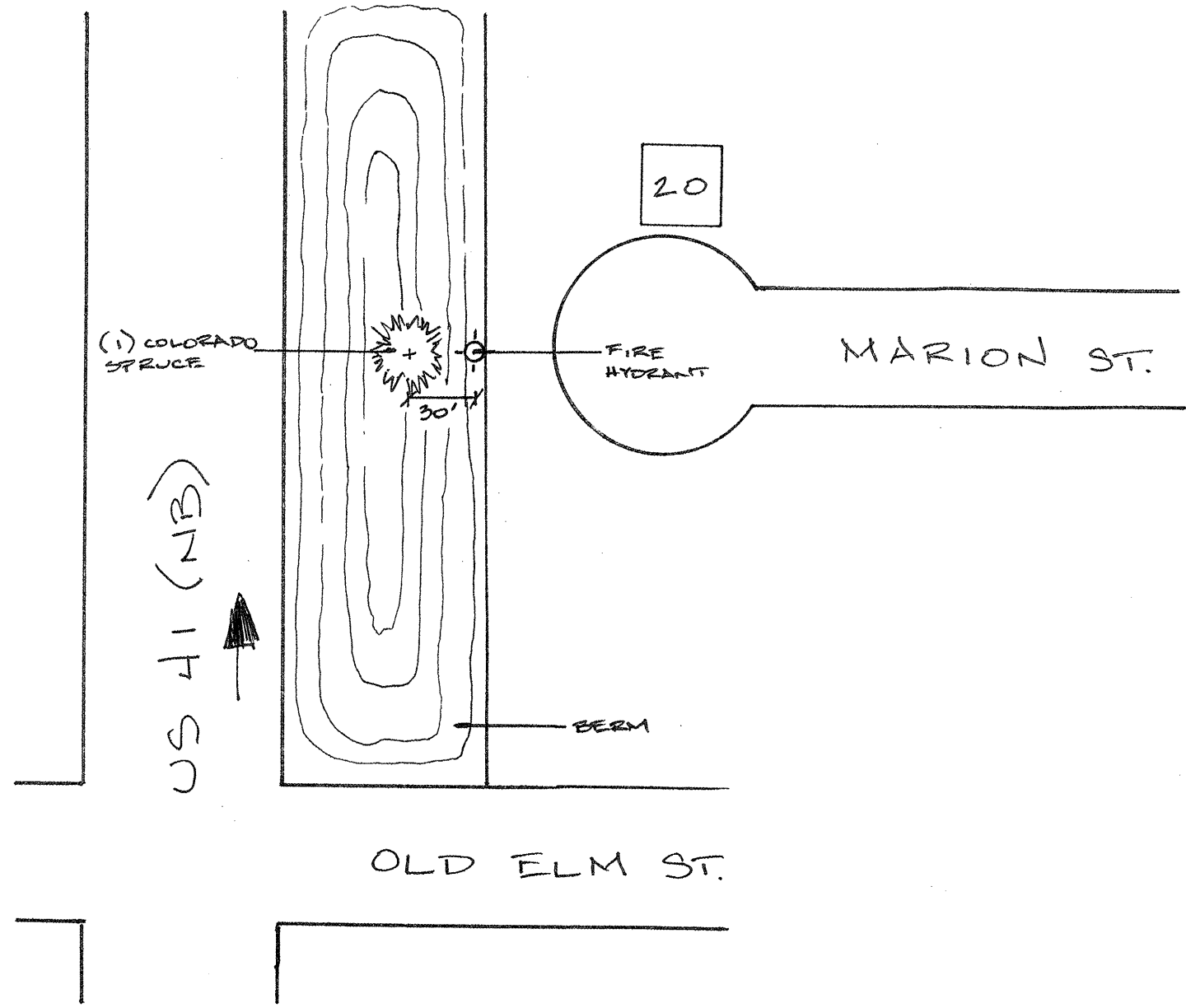
NOTE: LOCATION IS SOUTH OF US 45 AND WINCHESTER RD.  
IT IS 1/4 MI SOUTH AT THE FIRST GROUP OF TREES ON  
THE MEDIAN.

NOT DRAWN TO SCALE

ILLINOIS DEPARTMENT OF TRANSPORTATION  
LANDSCAPE REPAIR LOCATION AND  
LAYOUT PLAN

ROUTE	SECTION	COUNTY	TOTAL SHEETS	SHEET NUMBER
VARIOUS	2008-035 LS	VARIOUS	29	10

CONTRACT 60E76



NOTE: LOCATION IS 2 1/4 MILE NORTH OF OLD ELM ST.  
@ 20 MARION ST.

NOT DRAWN TO SCALE

**GENERAL LOCATION MAP**

COUNTY: LAKE  
CLAIM: N/A

CITY/TOWN: LAKE FOREST

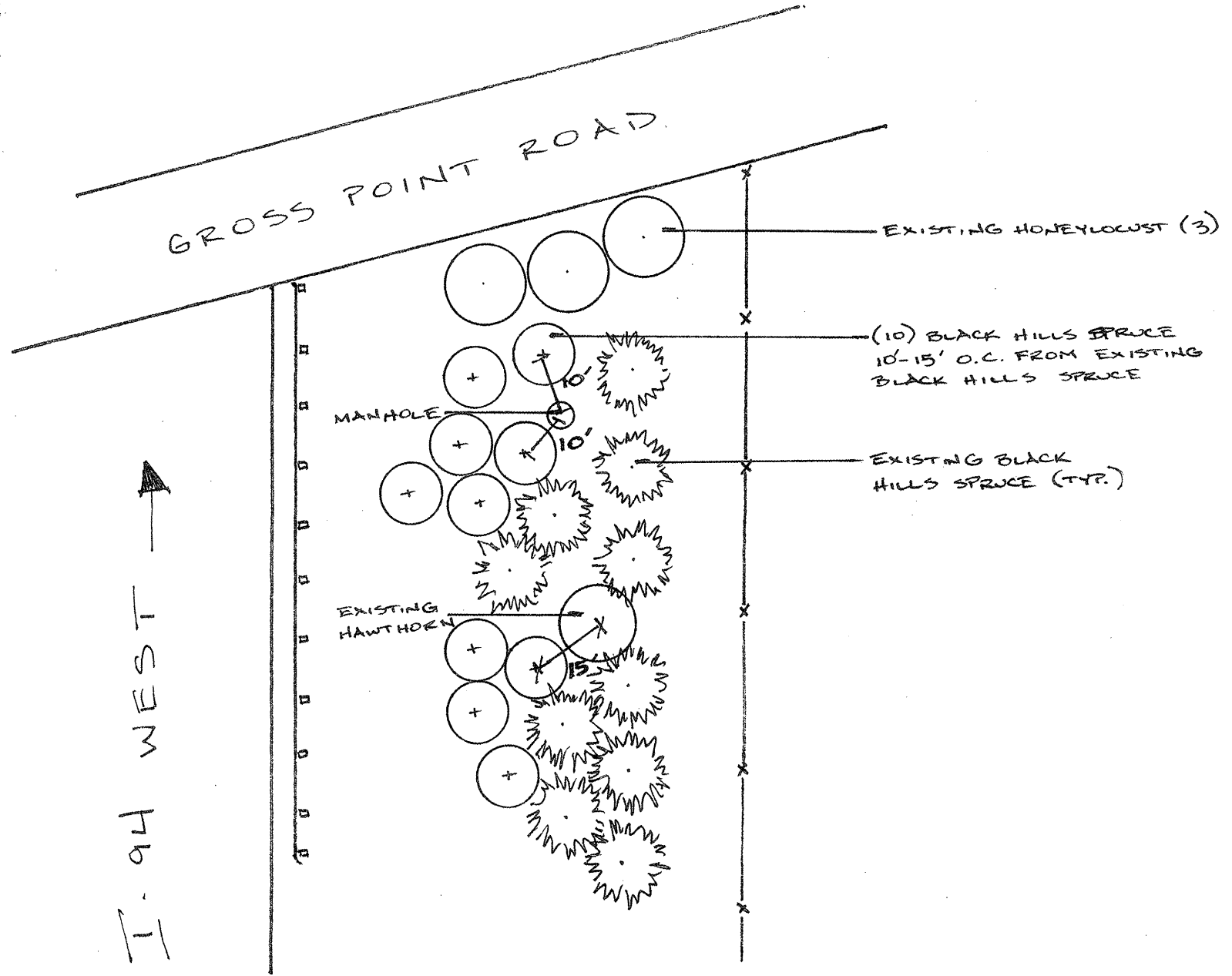
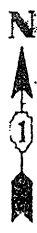
**SCHEDULE OF LANDSCAPE ITEMS**

DESCRIPTION	QTY/UNIT
<b>PICEA PUNGENS</b> COLORADO SPRUCE	1 EACH

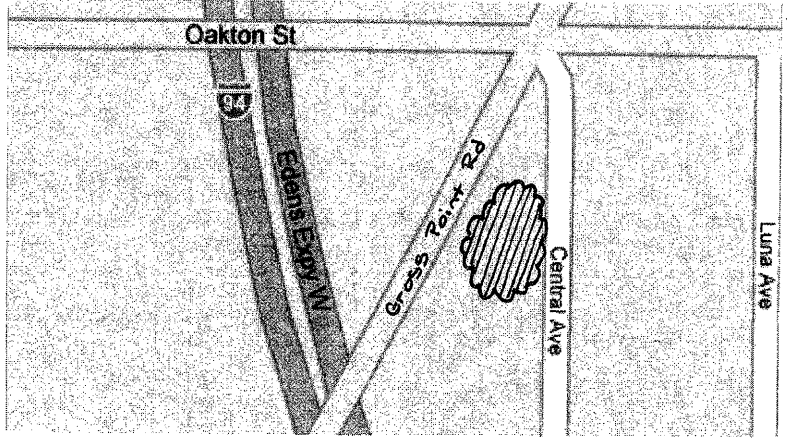
ILLINOIS DEPARTMENT OF TRANSPORTATION  
  
LANDSCAPE REPAIR LOCATION AND  
LAYOUT PLAN

ROUTE	SECTION	COUNTY	TOTAL SHEETS	SHEET NUMBER
VARIOUS	2008-035 LS	VARIOUS	29	11

CONTRACT 60E76



GENERAL LOCATION MAP



COUNTY: COOK  
CLAIM: N/A

CITY/TOWN: MORTON GROVE

SCHEDULE OF LANDSCAPE ITEMS

DESCRIPTION	QTY/UNIT
<b>PICEA GLAUCA DENSATA</b> BLACK HILLS SPRUCE	10 EACH

NOT DRAWN TO SCALE

ILLINOIS DEPARTMENT OF TRANSPORTATION  
  
LANDSCAPE REPAIR LOCATION AND  
LAYOUT PLAN

ROUTE	SECTION	COUNTY	TOTAL SHEETS	SHEET NUMBER
VARIOUS	2008-035 LS	VARIOUS	29	12

CONTRACT 60E76

**SCHEDULE OF LANDSCAPE ITEMS**  
 DESCRIPTION QTY/UNIT

<b>PERENNIAL PLANTS, GALLON POT</b>	26.00 UNITS
ALLIUM TANGUTICUM 'SUMMER BEAUTY'	2.00 UNITS
AMSONIA TABERNAEMONTANA VAR.SALICIFOLIA	1.00 UNIT
CALAMAGROSTIS ACUTIFLORA 'KARL FOERSTER'	2.00 UNITS
ECHINACEA PURPUREA 'ALBA'	2.00 UNITS
ERAGROSTIS SPECTABILIS	1.00 UNIT
LIATRIS SPICATA 'KOBOLD'	2.00 UNITS
NEPETA RACEMOSA 'WALKER'S LOW'	2.00 UNITS
SALVIA NEMEROSA 'AMETHYST'	1.00 UNIT
SALVIA NEMEROSA 'BLUE HILL'	1.00 UNIT
SALVIA NEMEROSA 'WESUWE'	1.00 UNIT
SCHIZACHYRIUM SCOPARIUM	5.00 UNITS
SPOROBOLUS HETEROLEPIS	5.00 UNITS
STACHYS MONNIERI 'HUMMELO'	1.00 UNIT
 <b>HYPERICUM KALMIANUM 'AMES'</b>	
AMES ST. JOHNSWORT	100 EACH
 <b>SPIRAEA BETULIFOLIA 'TOR'</b>	
BIRCHLEAF SPIREA	100 EACH
 <b>SPIRAEA JAPONICA 'NEON FLASH'</b>	
NEON FLASH SPIREA	100 EACH

PLANT MATERIAL WILL BE USED ON THE KENNEDY, EISENHOWER, AND EDENS EXPRESSWAYS (I-90, I-290, I-94). LOCATIONS WILL BE DETERMINED BY THE RESIDENT ENGINEER.

GENERAL LOCATION MAP

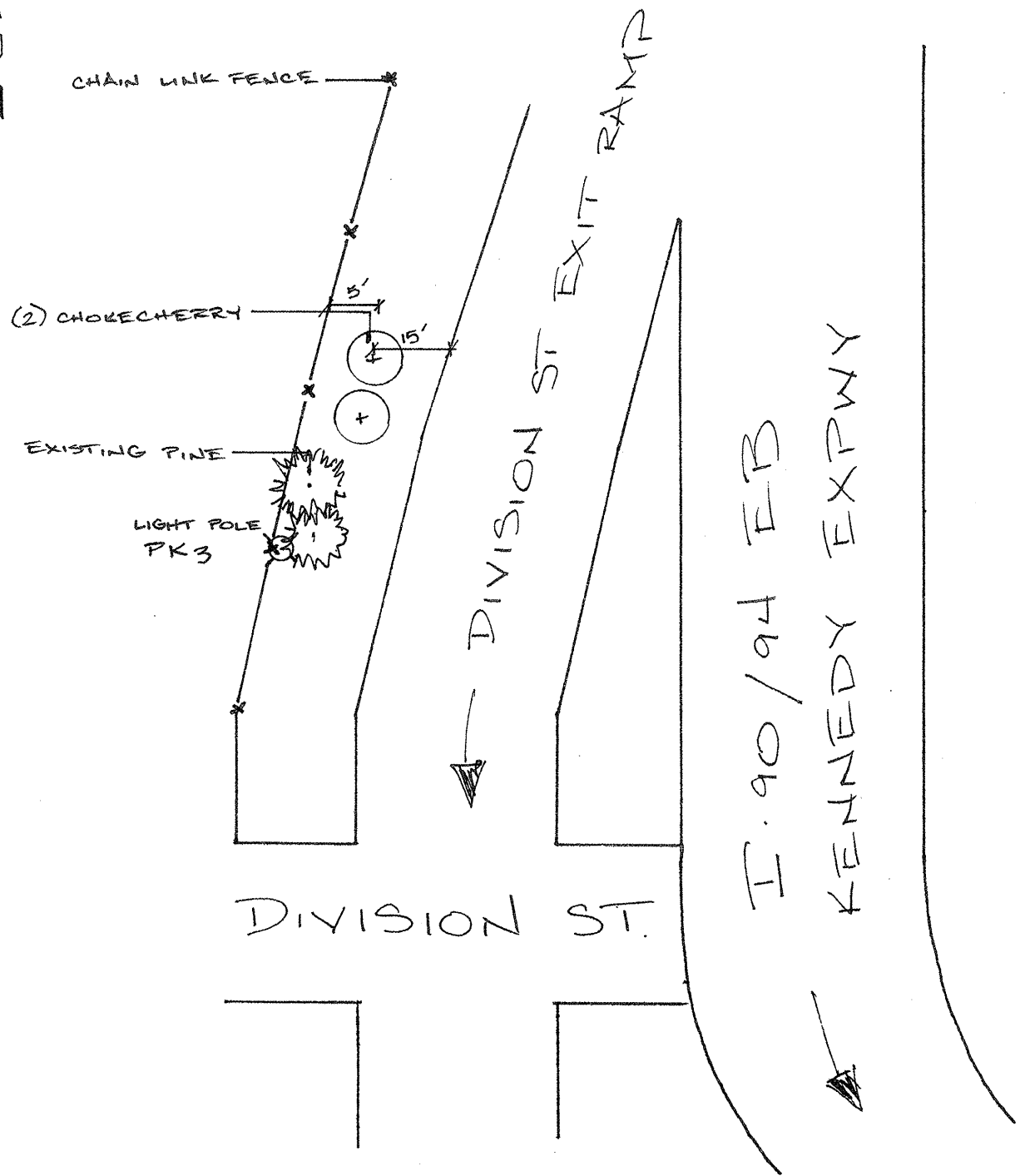
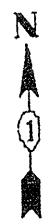
COUNTY: COOK  
 CLAIM: N/A

CITY/TOWN: CHICAGO

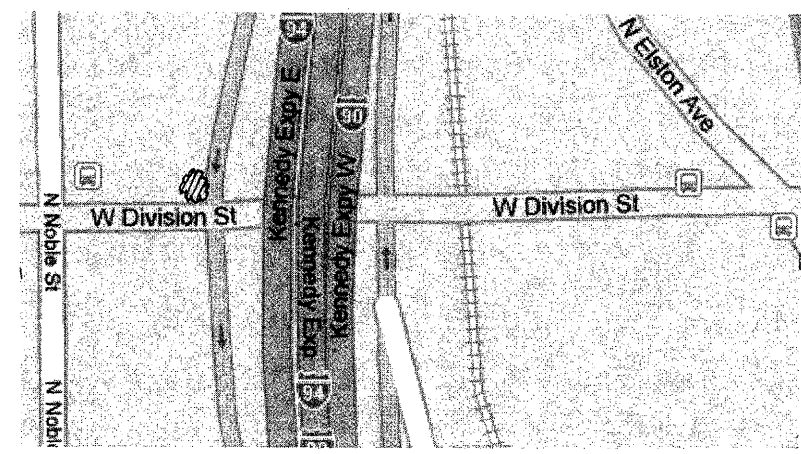
ILLINOIS DEPARTMENT OF TRANSPORTATION  
 LANDSCAPE REPAIR LOCATION AND  
 LAYOUT PLAN

ROUTE	SECTION	COUNTY	TOTAL SHEETS	SHEET NUMBER
VARIOUS	2008-035 LS	VARIOUS	29	13

CONTRACT 60E76



GENERAL LOCATION MAP



COUNTY: COOK  
CLAIM: 735042

CITY/TOWN: CHICAGO

SCHEDULE OF LANDSCAPE ITEMS

DESCRIPTION	QTY/UNIT
<b>PRUNUS VIRGINIANA 'SCHUBERT'</b> SCHUBERT CHOKECHERRY	2 EACH

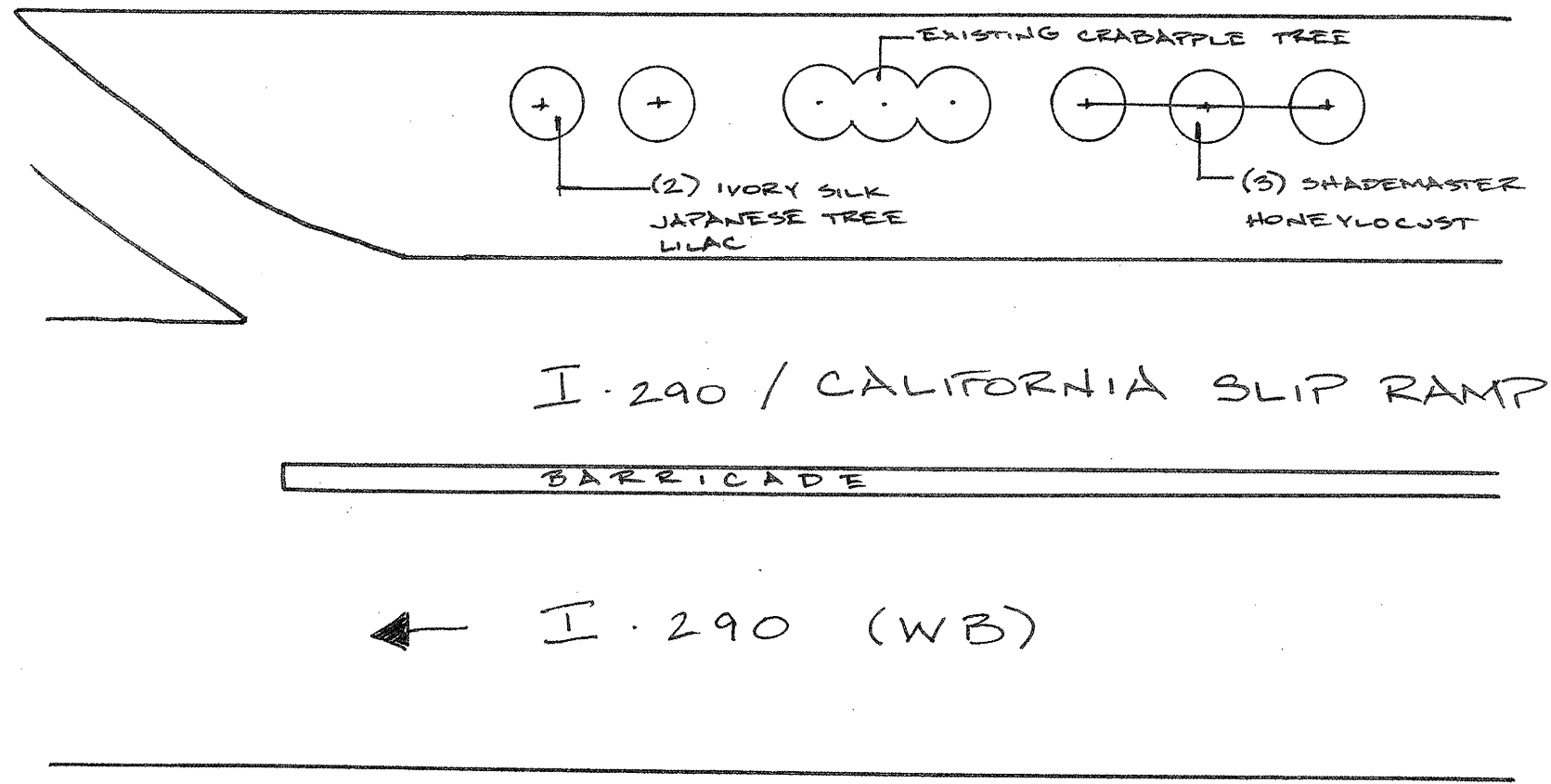
NOT DRAWN TO SCALE

ILLINOIS DEPARTMENT OF TRANSPORTATION

LANDSCAPE REPAIR LOCATION AND LAYOUT PLAN

ROUTE	SECTION	COUNTY	TOTAL SHEETS	SHEET NUMBER
VARIOUS	2008-035 LS	VARIOUS	29	14

CONTRACT 60E76



GENERAL LOCATION MAP

COUNTY: COOK  
CLAIM: 734729      734745      CITY/TOWN: CHICAGO

**SCHEDULE OF LANDSCAPE ITEMS**

DESCRIPTION	QTY/UNIT
<b>GLEDITSIA TRIACANTHOS VAR. INERMIS</b> <b>'SHADEMASTER'</b> SHADEMASTER HONEYLOCUST	3 EACH
<b>SYRINGA RETICULATA 'IVORY SILK'</b> IVORY SILK JAPANESE TREE LILAC	2 EACH

NOT DRAWN TO SCALE

ILLINOIS DEPARTMENT OF TRANSPORTATION  
  
LANDSCAPE REPAIR LOCATION AND  
LAYOUT PLAN

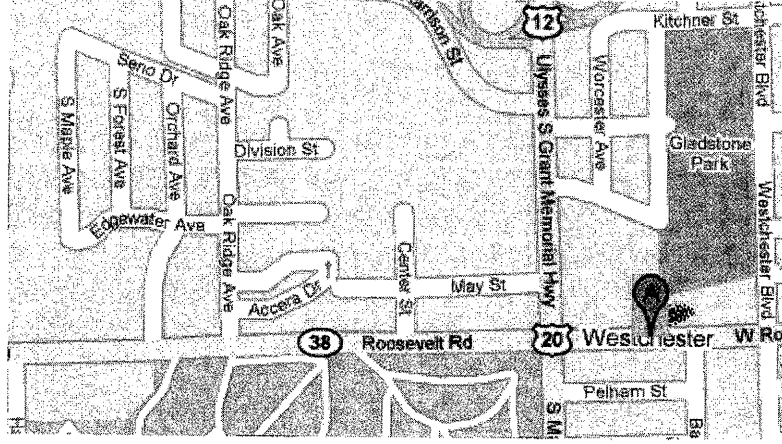
ROUTE	SECTION	COUNTY	TOTAL SHEETS	SHEET NUMBER
VARIOUS	2008-035 LS	VARIOUS	29	15

CONTRACT 60E76

**SCHEDULE OF LANDSCAPE ITEMS**  
 DESCRIPTION QTY/UNIT

<b>ACER SACCHARUM</b> SUGAR MAPLE	2 EACH
<b>QUERCUS MACROCARPA</b> BUR OAK	1 EACH
<b>SEEDING, CLASS 2A</b>	0.02 ACRE
<b>NITROGEN FERTILIZER NUTRIENT</b>	1.8 POUND
<b>PHOSPHORUS FERTILIZER NUTRIENT</b>	1.8 POUND
<b>POTASSIUM FERTILIZER NUTRIENT</b>	1.8 POUND
<b>EROSION CONTROL BLANKET</b>	84 SQ YD
<b>SHRUB CARE</b>	15 EACH
<b>MULCH PLACEMENT</b>	31 SQ YD

GENERAL LOCATION MAP



COUNTY: COOK  
 CLAIM: N/A

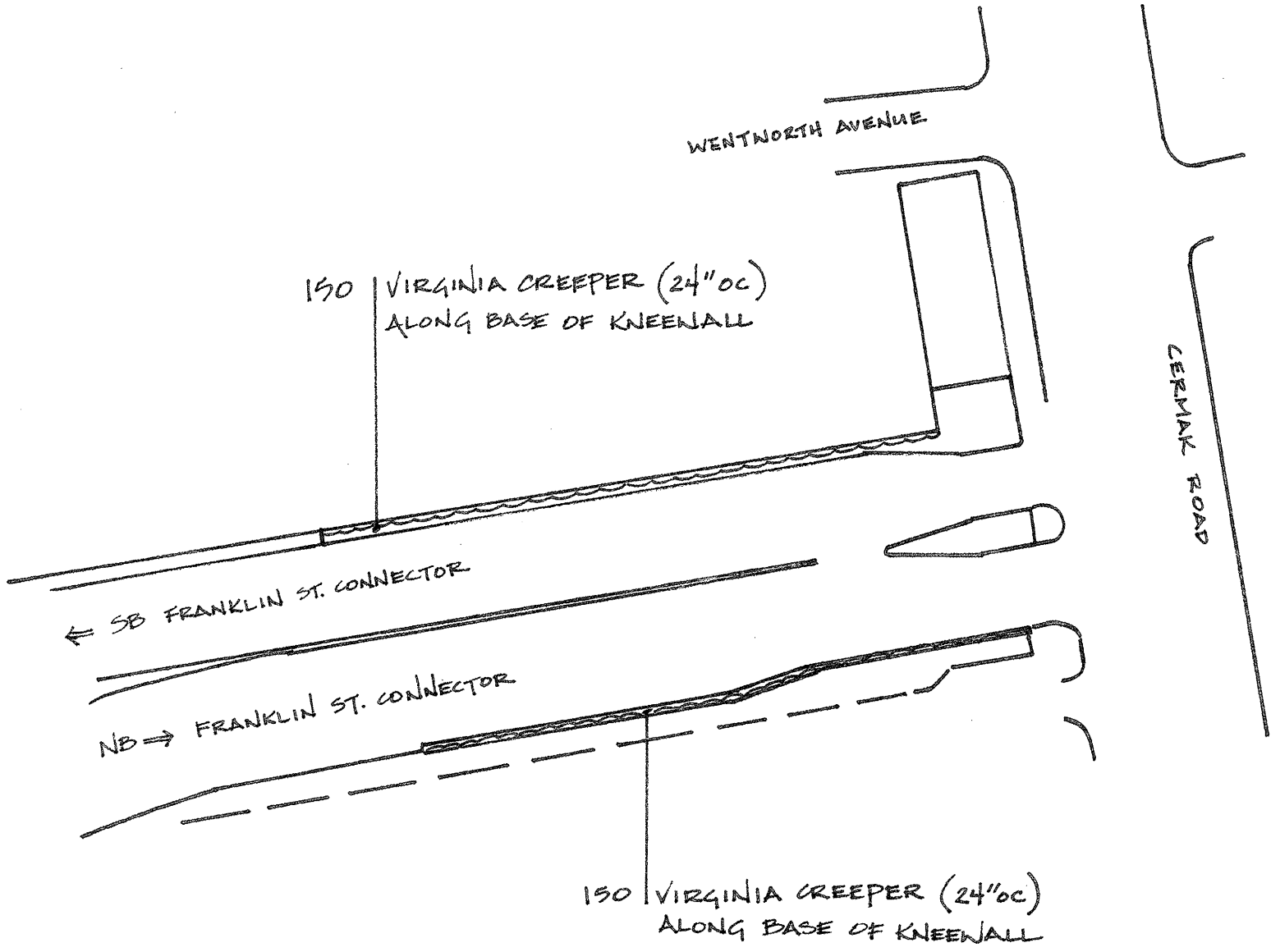
CITY/TOWN: WESTCHESTER

LANDSCAPE AREAS ARE LOCATED ON IL RTE. 38 (ROOSEVELT RD.). PLANS WILL BE GIVEN BY RESIDENT ENGINEER.

ILLINOIS DEPARTMENT OF TRANSPORTATION  
 LANDSCAPE REPAIR LOCATION AND LAYOUT PLAN

ROUTE	SECTION	COUNTY	TOTAL SHEETS	SHEET NUMBER
VARIOUS	2008-035 LS	VARIOUS	29	16

CONTRACT 60E76



**GENERAL LOCATION MAP**

COUNTY: COOK  
CLAIM: N/A

CITY/TOWN: CHICAGO

**SCHEDULE OF LANDSCAPE ITEMS**

DESCRIPTION	QTY/UNIT
<b>PARTHENOCISSUS QUINQUEFOLIA</b> VIRGINIA CREEPER	300 EACH

NOT DRAWN TO SCALE

ILLINOIS DEPARTMENT OF TRANSPORTATION  
LANDSCAPE REPAIR LOCATION AND  
LAYOUT PLAN



ROUTE	SECTION	COUNTY	TOTAL SHEETS	SHEET NUMBER
VARIOUS	2008-035 LS	VARIOUS	29	17

CONTRACT 60E76

PLAN IS ON THE FOLLOWING PAGE.

GENERAL LOCATION MAP

COUNTY: COOK  
CLAIM: N/A

CITY/TOWN: CHICAGO

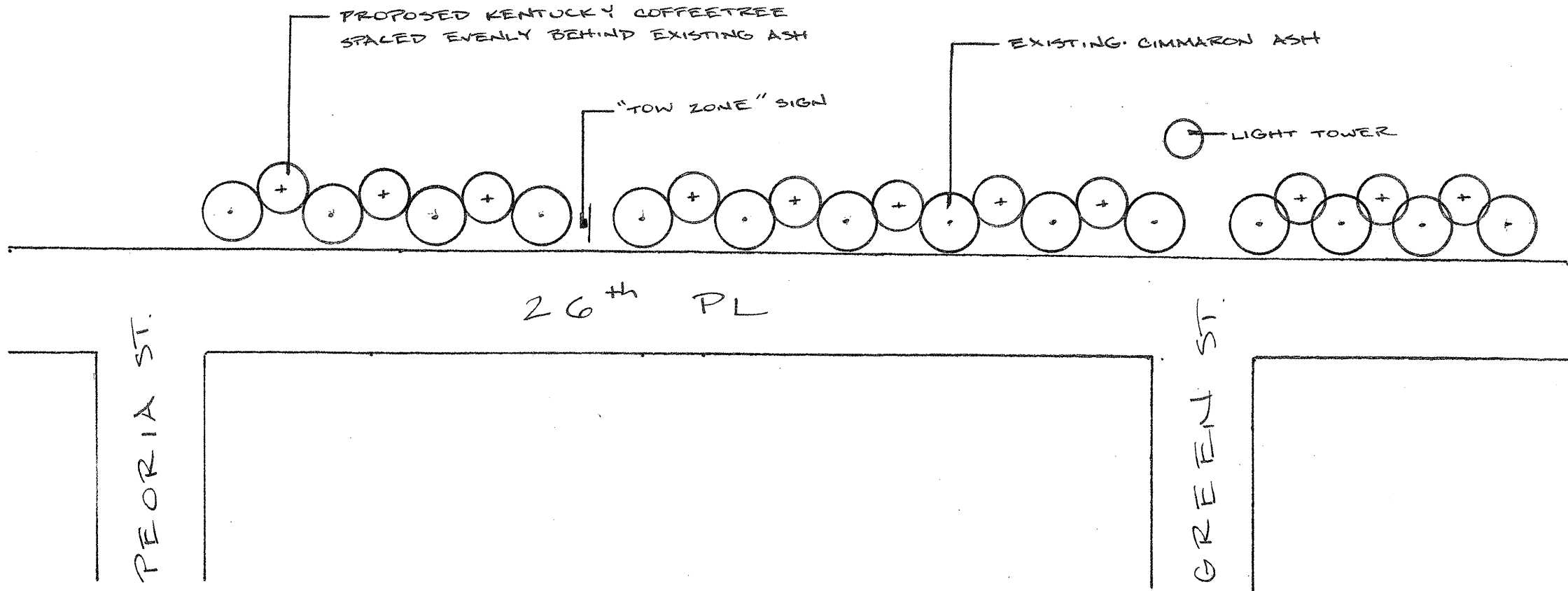
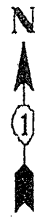
SCHEDULE OF LANDSCAPE ITEMS

DESCRIPTION	QTY/UNIT
<b>GYMNOCLADUS DIOICUS</b> KENTUCKY COFFEETREE	11 EACH

ILLINOIS DEPARTMENT OF TRANSPORTATION  
LANDSCAPE REPAIR LOCATION AND  
LAYOUT PLAN

ROUTE	SECTION	COUNTY	TOTAL SHEETS	SHEET NUMBER
VARIOUS	2008-035 LS	VARIOUS	29	18

CONTRACT 60E76

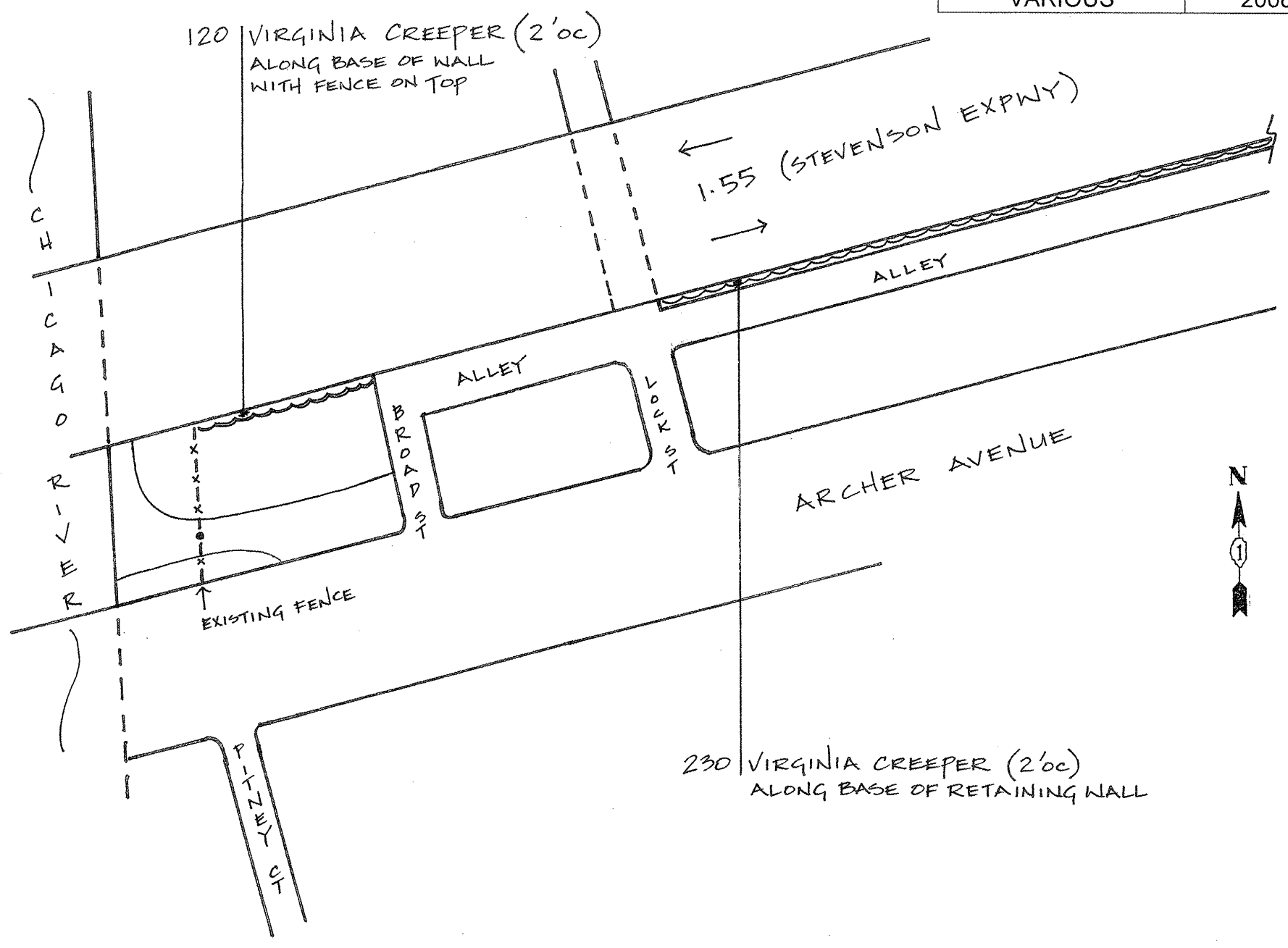


NOT DRAWN TO SCALE

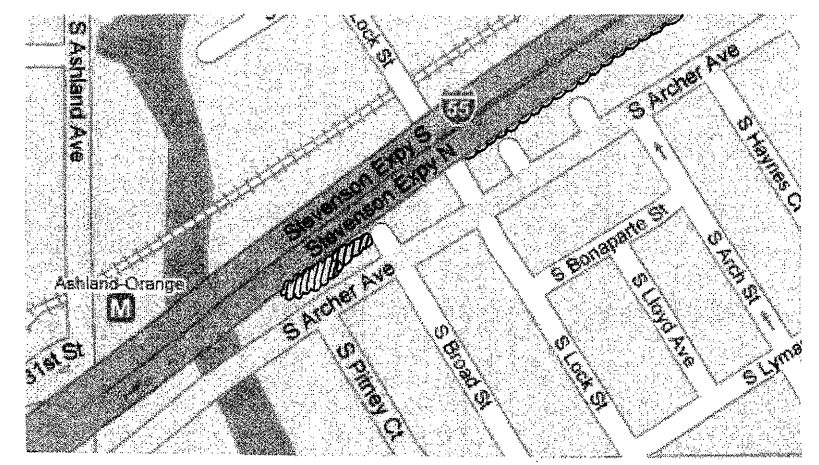
ILLINOIS DEPARTMENT OF TRANSPORTATION  
LANDSCAPE REPAIR LOCATION  
AND  
LAYOUT PLAN

ROUTE	SECTION	COUNTY	TOTAL SHEETS	SHEET NUMBER
VARIOUS	2008-035 LS	VARIOUS	29	19

CONTRACT 60E76



GENERAL LOCATION MAP



COUNTY: COOK  
CLAIM: N/A

CITY/TOWN: CHICAGO

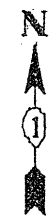
SCHEDULE OF LANDSCAPE ITEMS

DESCRIPTION	QTY/UNIT
<b>PARTHENOCISSUS QUINQUEFOLIA</b> VIRGINIA CREEPER	350 EACH

ILLINOIS DEPARTMENT OF TRANSPORTATION  
LANDSCAPE REPAIR LOCATION AND LAYOUT PLAN

ROUTE	SECTION	COUNTY	TOTAL SHEETS	SHEET NUMBER
VARIOUS	2008-035 LS	VARIOUS	29	20

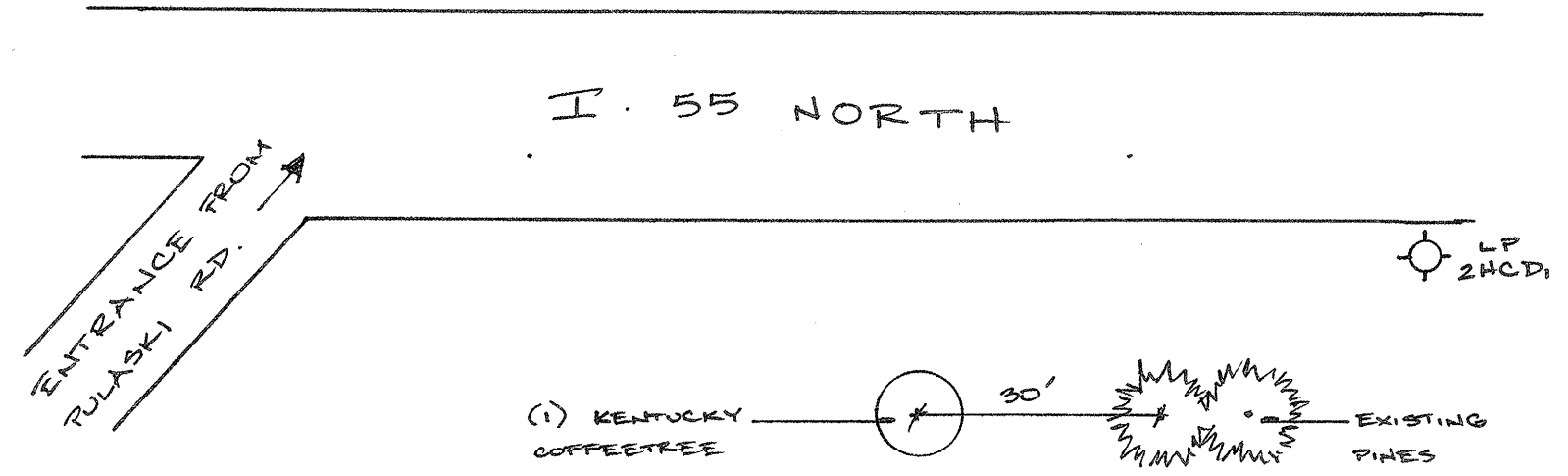
CONTRACT 60E76



GENERAL LOCATION MAP

COUNTY: COOK  
CLAIM: 734745

CITY/TOWN: CHICAGO



SCHEDULE OF LANDSCAPE ITEMS

DESCRIPTION	QTY/UNIT
<b>GYMNOCLADUS DIOICUS</b> KENTUCKY COFFEETREE	1 EACH

NOTE: LOCATION IS 1/4 MILE SOUTH OF PULASKI RD.

NOT DRAWN TO SCALE

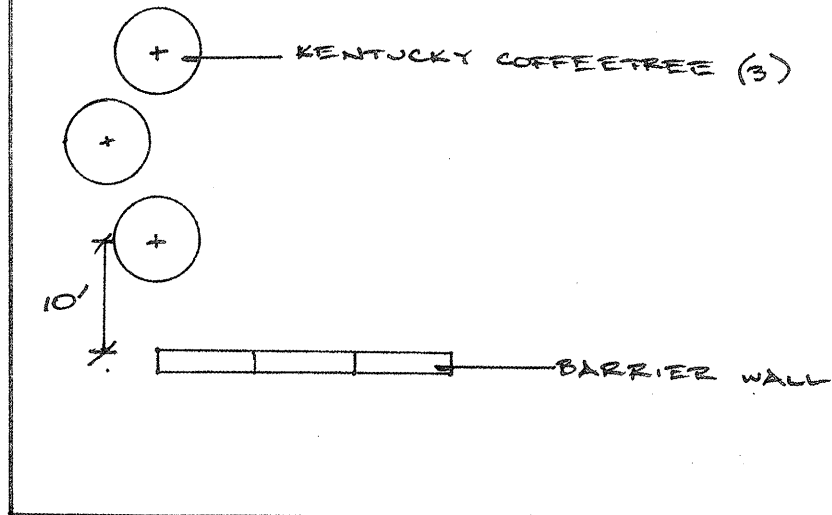
ILLINOIS DEPARTMENT OF TRANSPORTATION  
LANDSCAPE REPAIR LOCATION AND  
LAYOUT PLAN

ROUTE	SECTION	COUNTY	TOTAL SHEETS	SHEET NUMBER
VARIOUS	2008-035 LS	VARIOUS	29	21

CONTRACT 60E76

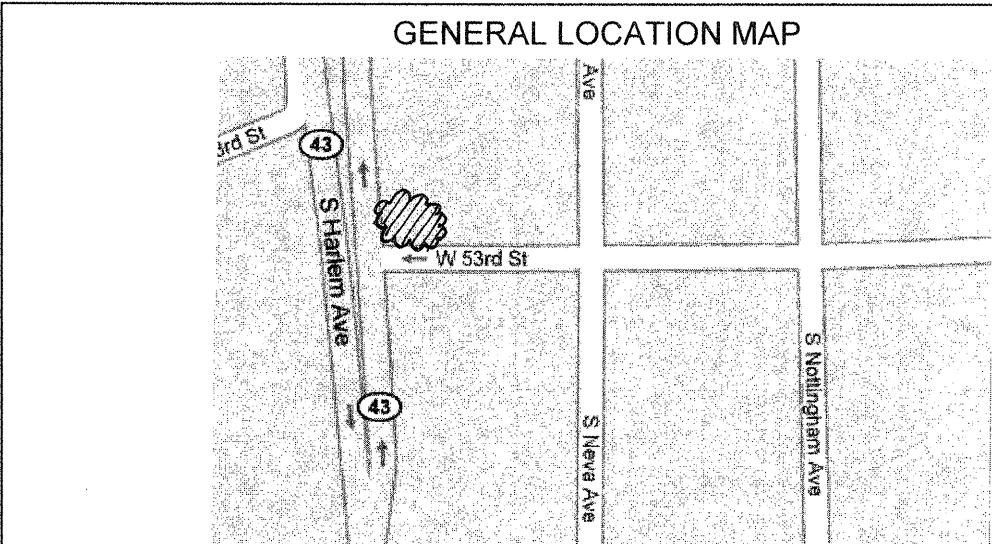


IL 43-HARLEM AVE (NB) →



53<sup>rd</sup> STREET

NOT DRAWN TO SCALE



COUNTY: COOK  
CLAIM: N/A

CITY/TOWN: CHICAGO

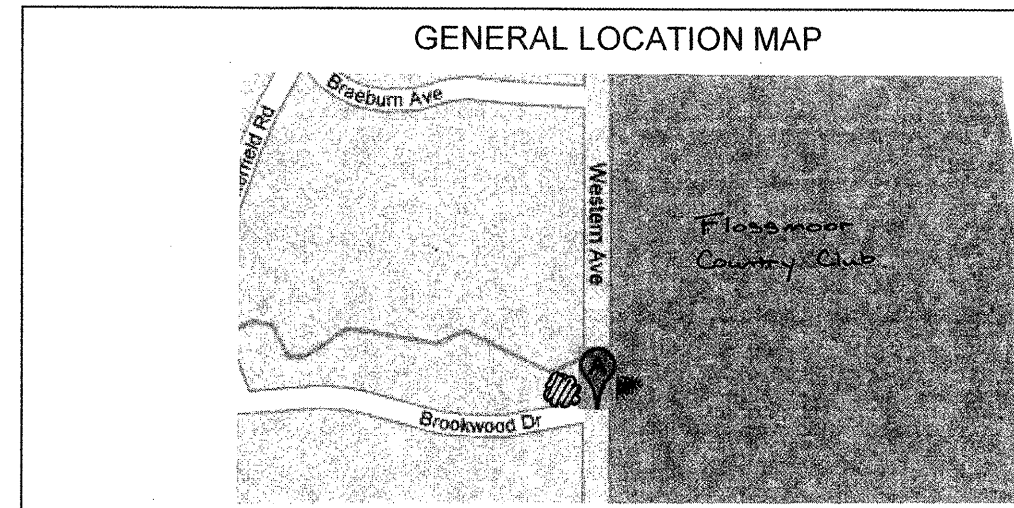
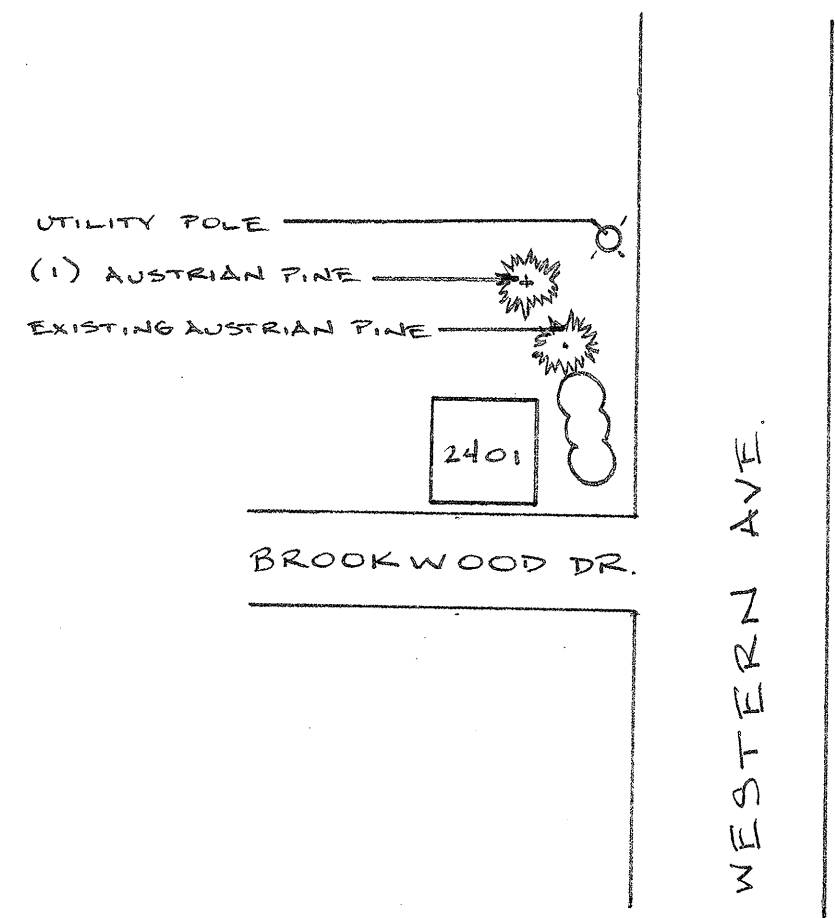
SCHEDULE OF LANDSCAPE ITEMS

DESCRIPTION	QTY/UNIT
<b>GYMNOCLADUS DIOICUS</b>	
KENTUCKY COFFEETREE	3 EACH

ILLINOIS DEPARTMENT OF TRANSPORTATION  
LANDSCAPE REPAIR LOCATION AND LAYOUT PLAN

ROUTE	SECTION	COUNTY	TOTAL SHEETS	SHEET NUMBER
VARIOUS	2008-035 LS	VARIOUS	29	22

CONTRACT 60E76



COUNTY: COOK  
CLAIM: N/A

CITY/TOWN: FLOSSMOOR

SCHEDULE OF LANDSCAPE ITEMS

DESCRIPTION	QTY/UNIT
<b>PINUS NIGRA</b> AUSTRIAN PINE	1 EACH

**PINUS NIGRA**  
AUSTRIAN PINE

1 EACH

NOTE: LOCATION IS 1/4 MILE NORTH OF VOLLMER RD.

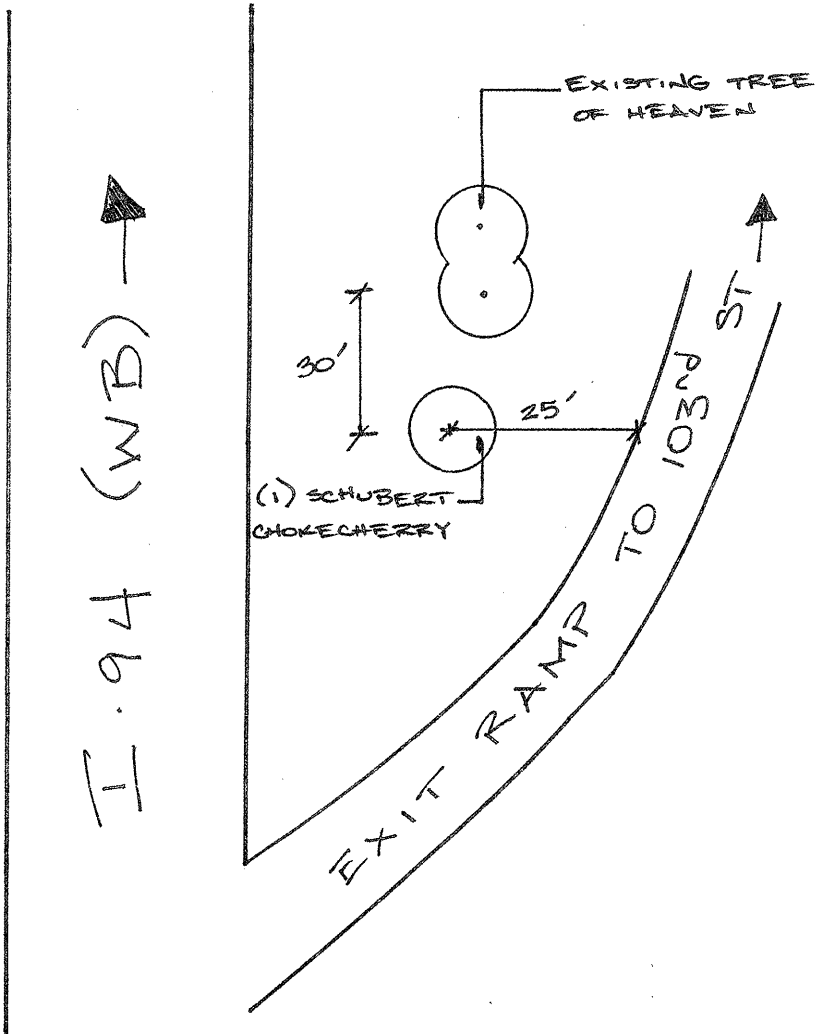
NOT DRAWN TO SCALE

ILLINOIS DEPARTMENT OF TRANSPORTATION

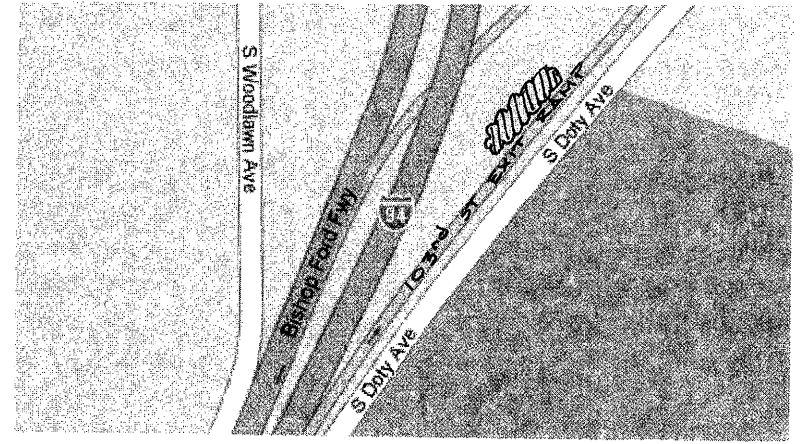
LANDSCAPE REPAIR LOCATION AND LAYOUT PLAN

ROUTE	SECTION	COUNTY	TOTAL SHEETS	SHEET NUMBER
VARIOUS	2008-035 LS	VARIOUS	29	23

CONTRACT 60E76



GENERAL LOCATION MAP



COUNTY: COOK  
CLAIM: 734752

CITY/TOWN: CHICAGO

**SCHEDULE OF LANDSCAPE ITEMS**  
DESCRIPTION QTY/UNIT

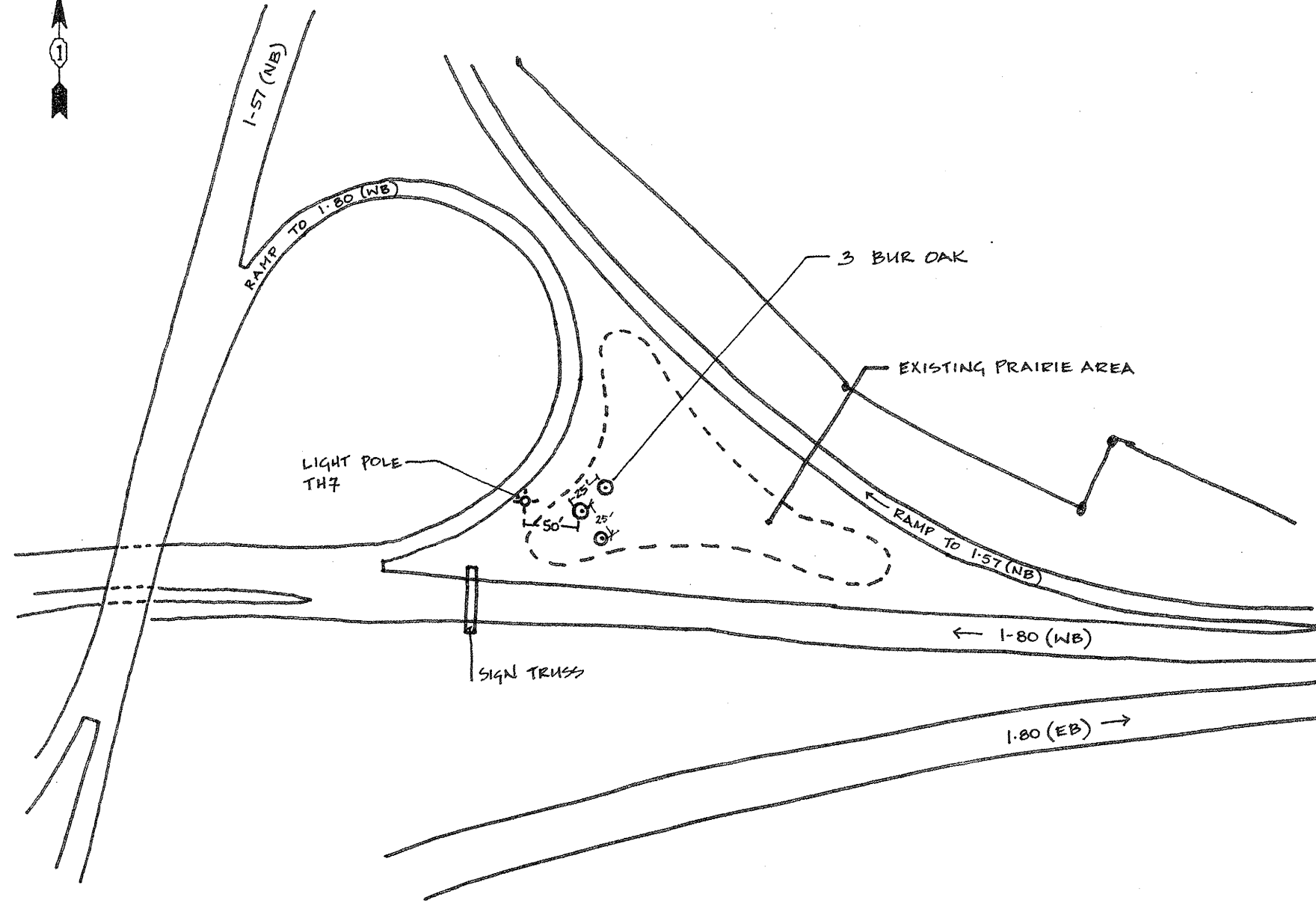
<b>PRUNUS VIRGINIANA 'SCHUBERT'</b> SCHUBERT CHOKECHERRY	1 EACH
---	--------

NOT DRAWN TO SCALE

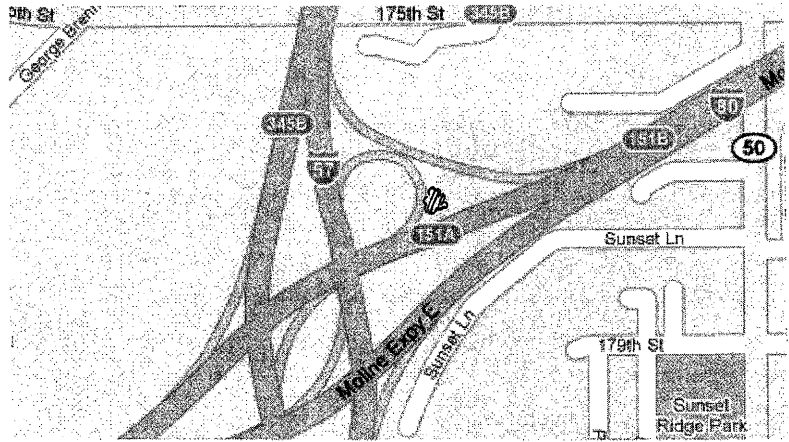
ILLINOIS DEPARTMENT OF TRANSPORTATION  
LANDSCAPE REPAIR LOCATION AND  
LAYOUT PLAN

ROUTE	SECTION	COUNTY	TOTAL SHEETS	SHEET NUMBER
VARIOUS	2008-035 LS	VARIOUS	29	24

CONTRACT 60E76



GENERAL LOCATION MAP



COUNTY: COOK  
CLAIM: 737398

CITY/TOWN: COUNTRY CLUB HILLS

SCHEDULE OF LANDSCAPE ITEMS

DESCRIPTION	QTY/UNIT
<b>QUERCUS MACROCARPA</b> BUR OAK	3 EACH

NOT DRAWN TO SCALE

ILLINOIS DEPARTMENT OF TRANSPORTATION  
LANDSCAPE REPAIR LOCATION AND  
LAYOUT PLAN



ROUTE	SECTION	COUNTY	TOTAL SHEETS	SHEET NUMBER
VARIOUS	2008-035 LS	VARIOUS	29	25

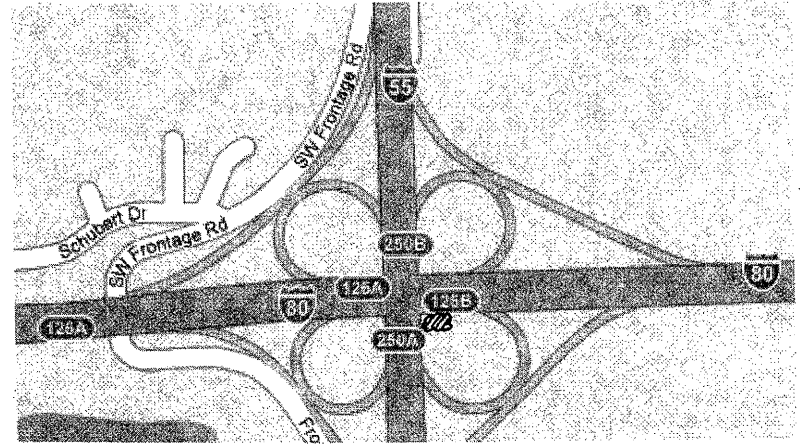
CONTRACT 60E76

**SCHEDULE OF LANDSCAPE ITEMS**  
DESCRIPTION QTY/UNIT

<b>WEED CONTROL, NON-SELECTIVE AND NON-RESIDUAL</b>	0.05 GALLON
<b>WEED CONTROL, PRE-EMERGENT GRANULAR HERBICIDE</b>	0.05 GALLON
<b>COARSE SAND PLACEMENT, 2"</b>	244 SQ YD
<b>PERENNIAL PLANTS, GALLON POT</b>	13.25 UNITS
ANDROPOGON GERARDII	0.75 UNITS
ECHINACEA PURPUREA 'MAGNUS'	1.25 UNITS
PANICUM VIRGATUM 'PRAIRIE SKY'	1.25 UNITS
RUDBECKIA FULGIDA 'GOLDSTURM'	4.00 UNITS
SCHIZACHYRIUM SCOPARIUM	4.00 UNITS
SILIPHIMUM LACINIATUM	0.75 UNITS
SPOROBOLUS HETEROLEPIS	1.25 UNITS
<b>PHYSOCARPUS OPULIFOLIUS 'LADY IN RED'</b>	
LADY IN RED COMMON NINEBARK	60 EACH

PLAN IS ON THE FOLLOWING PAGE.

GENERAL LOCATION MAP



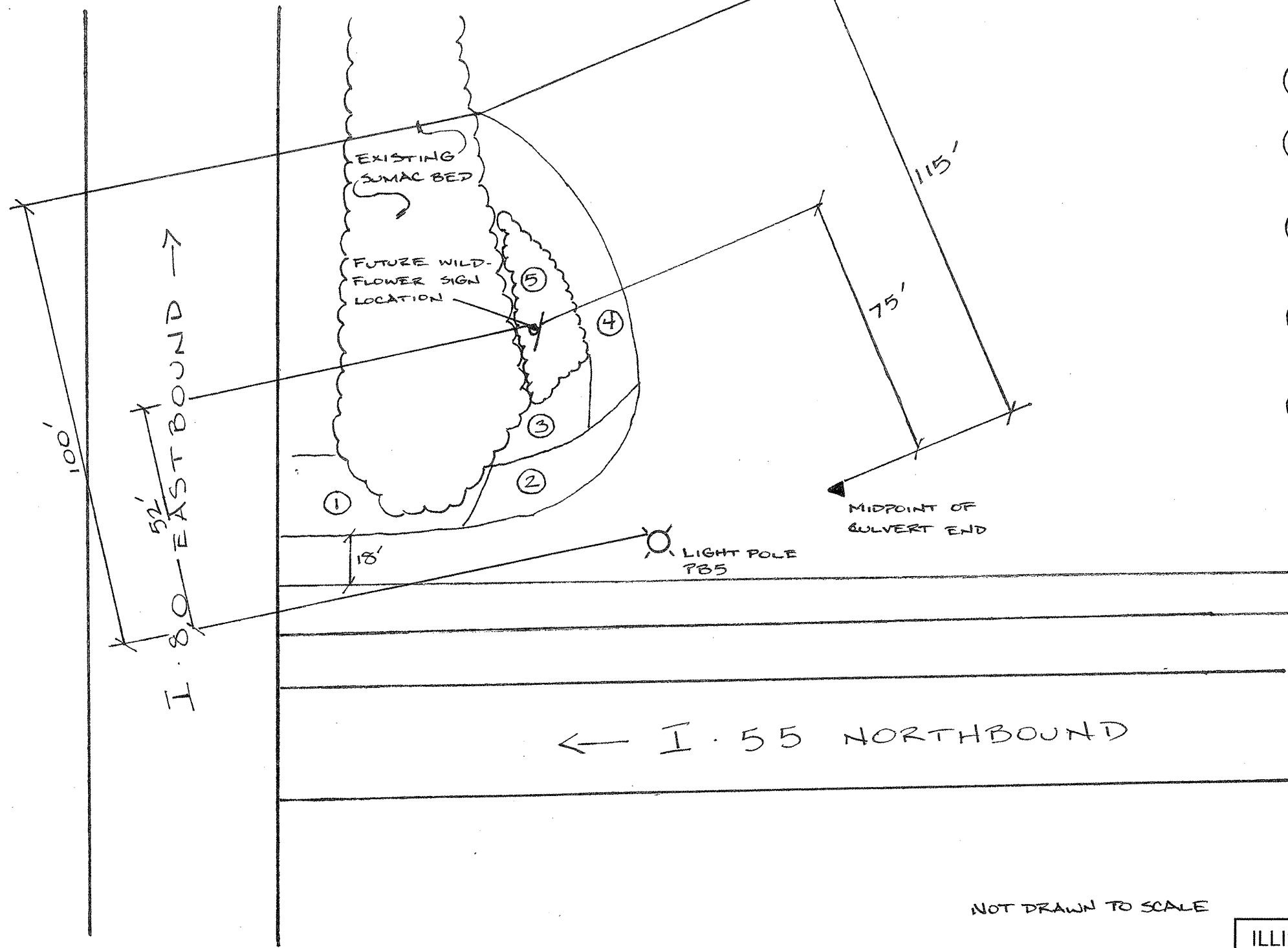
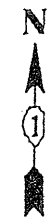
COUNTY: WILL  
CLAIM: N/A

CITY/TOWN: TROY TOWNSHIP

ILLINOIS DEPARTMENT OF TRANSPORTATION  
LANDSCAPE REPAIR LOCATION AND LAYOUT PLAN

ROUTE	SECTION	COUNTY	TOTAL SHEETS	SHEET NUMBER
VARIOUS	2008-035 LS	VARIOUS	29	26

CONTRACT 60E76



PLANT KEY

- ① PRAIRIE FIRE SWITCH GRASS - 18" O.C. (125 EA)
- ② MAGNUS PURPLE CONEFLOWER - 12" O.C. (125 EA) INTERPLANTED WITH PRAIRIE DROPSEED (125 EA)
- ③ BIG BLUESTEM - 18" O.C. (75 EA) INTERPLANTED WITH COMPASS PLANT (75 EACH)
- ④ GOLDSTURM BLACK-EYED SUSAN - 12" O.C. (400 EA) INTERPLANTED WITH LITTLE BLUESTEM (400 EA)
- ⑤ LADY IN RED COMMON NINEBARK - 36" O.C. (60 EA)

NOT DRAWN TO SCALE

ILLINOIS DEPARTMENT OF TRANSPORTATION  
 LANDSCAPE REPAIR LOCATION  
 AND  
 LAYOUT PLAN

ROUTE	SECTION	COUNTY	TOTAL SHEETS	SHEET NUMBER
VARIOUS	2008-035 LS	VARIOUS	29	27

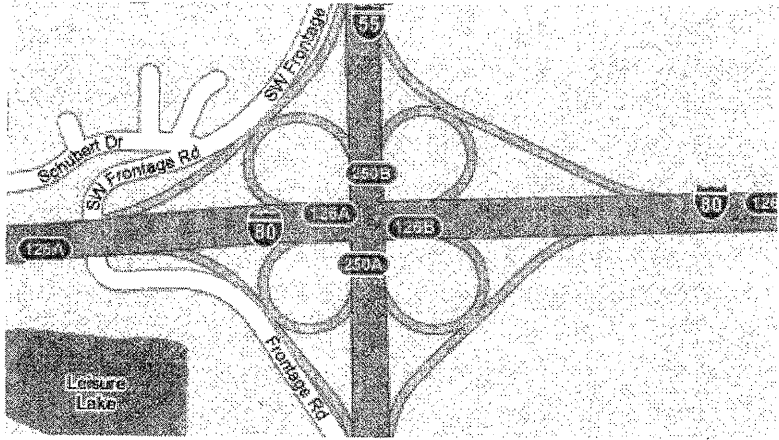
CONTRACT 60E76

**SCHEDULE OF LANDSCAPE ITEMS**  
 DESCRIPTION QTY/UNIT

**PERENNIAL PLANTS, GALLON POT** 1.00 UNITS  
 SPOROBOLUS HETEROLEPIS 1.00 UNITS

LAYOUT WILL BE DONE BY STEVE LIPKIE. CONTRACTOR SHALL CALL 72 HOURS PRIOR TO INSTALLATION FOR REQUEST OF LAYOUT AT (847) 705-4173.

GENERAL LOCATION MAP



COUNTY: WILL  
 CLAIM: N/A

CITY/TOWN: TROY TOWNSHIP

ILLINOIS DEPARTMENT OF TRANSPORTATION  
 LANDSCAPE REPAIR LOCATION AND  
 LAYOUT PLAN

ROUTE	SECTION	COUNTY	TOTAL SHEETS	SHEET NUMBER
VARIOUS	2008-035 LS	VARIOUS	29	28

**SCHEDULE OF LANDSCAPE ITEMS**

DESCRIPTION	QTY/UNIT
<b>STATE STREET MIYABE MAPLE</b>	20 EACH
<b>OHIO BUCKEYE</b>	30 EACH
<b>NORTHERN CATALPA</b>	35 EACH
<b>COMMON HACKBERRY</b>	35 EACH
<b>SHADEMASTER HONEYLOCUST</b>	25 EACH
<b>KENTUCKY COFFEETREE</b>	36 EACH
<b>HERITAGE OAK</b>	15 EACH
<b>BUR OAK</b>	32 EACH
<b>CHICAGO BLUES LOCUST</b>	20 EACH
<b>ACCOLADE ELM</b>	20 EACH
<b>CANADA RED CHOKECHERRY</b>	20 EACH
<b>CHINA SNOW PEKING LILAC</b>	20 EACH
<b>IVORY SILK JAPANESE TREE LILAC</b>	15 EACH
<b>BLACK HILLS SPRUCE</b>	5 EACH
<b>COLORADO SPRUCE</b>	9 EACH
<b>VANDERWOLF'S PYRAMID LIMBER PINE</b>	20 EACH
<b>AUSTRIAN PINE</b>	14 EACH
<b>NARCISSUS BULBS</b>	50 UNIT
GOBLET	5 UNIT
HONEYBIRD	5 UNIT
MARIEKE	5 UNIT
SPELLBINDER	5 UNIT
DEBILES	5 UNIT
FORTUNE	5 UNIT
JUANITA	5 UNIT
ACCENT	5 UNIT
YELLOW CHEERFULNESS	5 UNIT
TAJITI	5 UNIT

**CONTRACT 60E76**

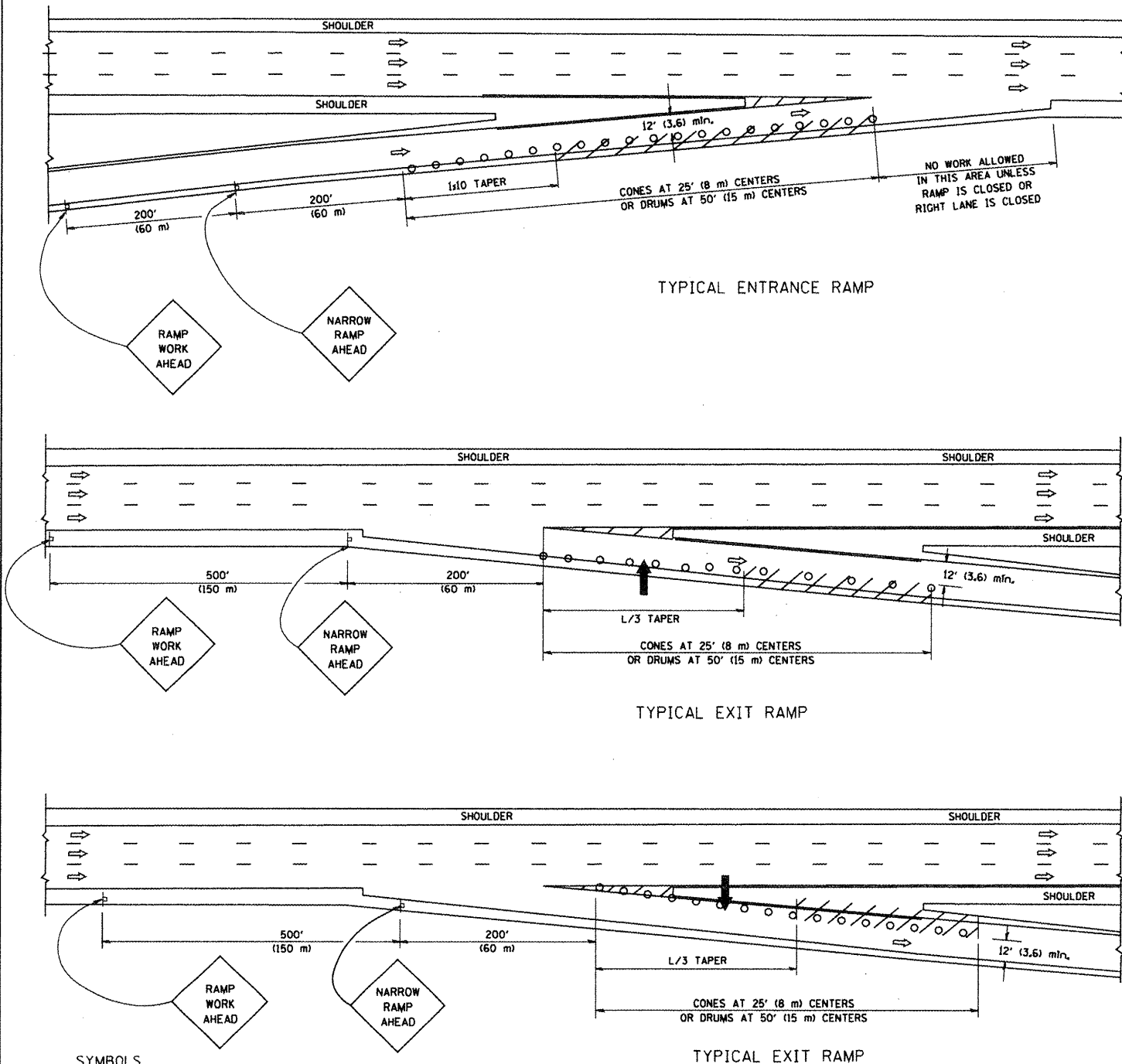
**SCHEDULE OF LANDSCAPE ITEMS**

DESCRIPTION	QTY/UNIT
<b>PERENNIAL PLANTS</b>	6 UNIT
BAPTISIA X VARIICOLOR	
'TWILITE PRAIRIE BLUES'	1.25 UNIT
ECHINACEA 'SUNSET'	1 UNIT
EUPATORIUM PURPUREUM	
'CHOCOLATE'	1.5 UNIT
MONARDA 'RASPBERRY WINE'	1 UNIT
PANICUM VIRGATUM	
'SHENANDOAH'	1.25 UNIT
<b>SEEDING, CLASS 4 (MODIFIED)</b>	2 ACRE
<b>SEEDING, CLASS 5 (MODIFIED)</b>	2 ACRE
<b>INTERSEEDING, CLASS 4 (MODIFIED)</b>	2 ACRE
<b>INTERSEEDING, CLASS 5 (MODIFIED)</b>	2 ACRE

NOTE: LOCATIONS OF PLANT MATERIAL  
WILL BE DETERMINED BY THE ENGINEER.

ILLINOIS DEPARTMENT OF TRANSPORTATION  
  
LANDSCAPE REPAIR LOCATION AND  
LAYOUT PLAN

PARTIAL RAMP CLOSURE DETAILS



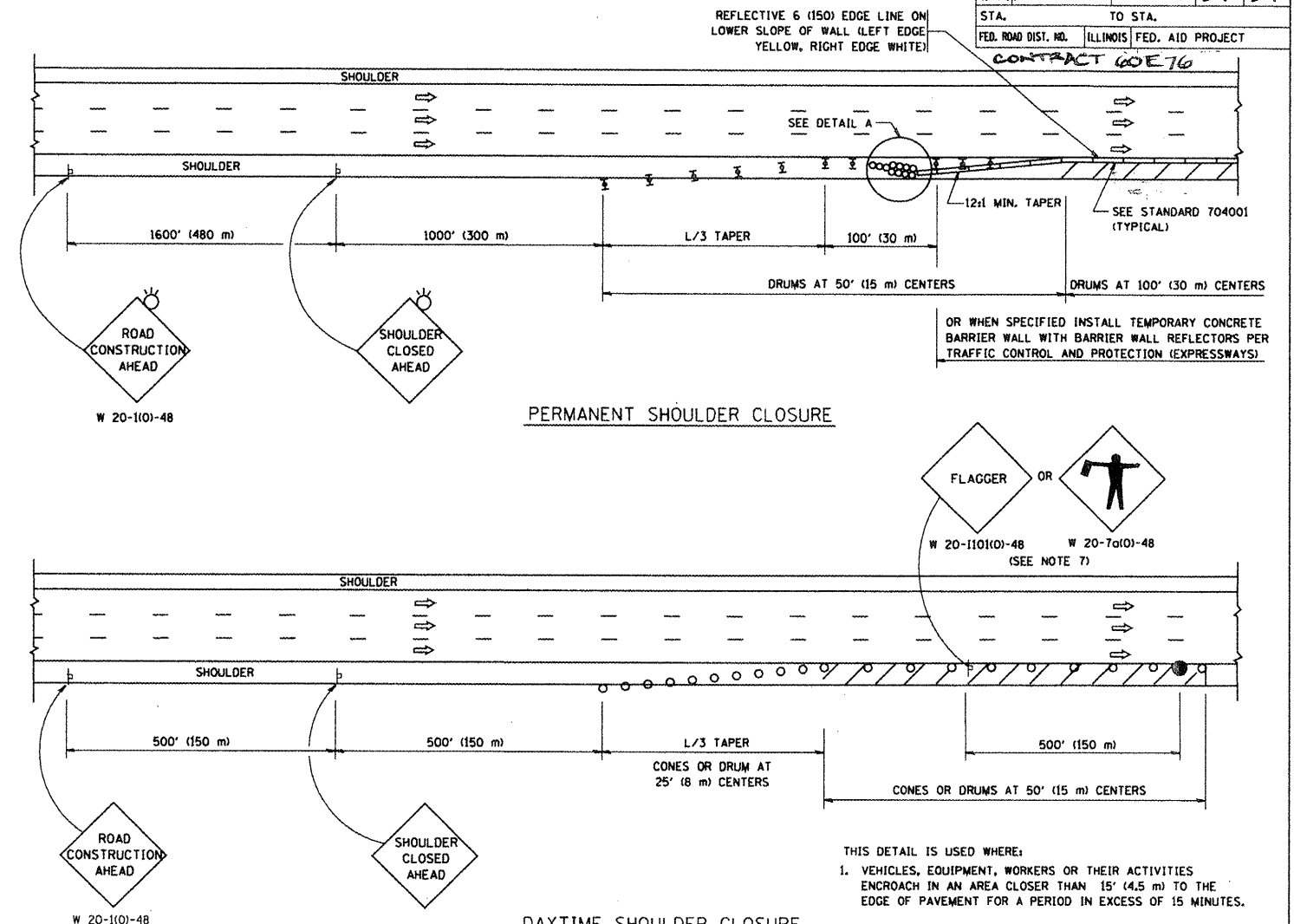
SYMBOLS

- ARROWBOARD
- WORK AREA
- SIGN ON PORTABLE OR PERMANENT SUPPORT
- FLAGGER WITH CONTROL SIGN
- TYPE II BARRICADE, DRUM OR VERTICAL BARRICADE WITH STEADY BURN MONO-DIRECTIONAL LIGHT
- CONE, DRUM OR BARRICADE

GENERAL NOTES

1. THE "L" DISTANCE EQUALS:  
 SPEED LIMIT                      FORMULAS  
 45 mph (80 km/h)                  METRIC    ENGLISH  
 OR GREATER                      L=0.65(W/S)    L=(WxS)  
 W = WIDTH OF OFFSET IN FEET (METERS)  
 S = NORMAL POSTED SPEED MPH (KM/H)
2. PLASTIC DRUMS WITH HIGH PERFORMANCE REFLECTIVE SHEETING AND STEADY BURNING LIGHTS ARE REQUIRED FOR ALL NIGHTTIME CLOSURES.
3. ALL SIGNS SHALL BE POST MOUNTED IF THE CLOSURE TIME EXCEEDS FOUR DAYS.
4. FLASHING LIGHTS SHALL BE USED DURING THE HOURS OF DARKNESS AND SHALL BE INSTALLED ABOVE THE FIRST TWO SETS OF SIGNS.

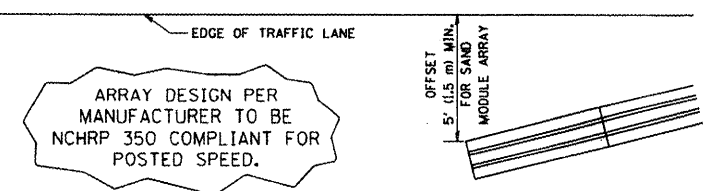
SHOULDER CLOSURE DETAILS



PERMANENT SHOULDER CLOSURE

DAYTIME SHOULDER CLOSURE

THIS DETAIL IS USED WHERE:  
 1. VEHICLES, EQUIPMENT, WORKERS OR THEIR ACTIVITIES ENCOACH IN AN AREA CLOSER THAN 15' (4.5 m) TO THE EDGE OF PAVEMENT FOR A PERIOD IN EXCESS OF 15 MINUTES.



DETAIL "A"  
 IMPACT ATTENUATOR, TEMPORARY  
 (SEE NOTE 5)

5. THE IMPACT ATTENUATOR, TEMPORARY IS NOT REQUIRED WHEN THE TEMPORARY CONCRETE BARRIER WALL IS PROTECTED BY OR IS TIED INTO THE EXISTING GUARDRAIL. IF OFFSET IS LESS THAN 5 FEET USE "TRAFFIC BARRIER TERMINAL, TYPE III, TEMPORARY" DEVICE TO MEET NCHRP350 FOR POSTED SPEED.
6. AUTHORIZATION FROM THE DISTRICT'S BUREAU OF TRAFFIC IS REQUIRED FOR ALL FREEWAY CLOSURES.
7. THE FLAGGER AND FLAGGER SIGN ARE REQUIRED AT THE ABOVE WORK SITES WHEN:
  - a. FOUR OR MORE WORK VEHICLES ENTER THE TRAFFIC LANES IN A ONE HOUR PERIOD.
  - b. THE WORK AVTIVITY REQUIRES FREQUENT ENCOACHMENT INTO THE LANE OPEN TO TRAFFIC.
 THE FLAGGER SHALL BE STATIONED APPROXIMATELY 100' (30 m) TO 200' (60 m) IN ADVANCE OF THE WORKERS.

ALL DIMENSIONS ARE IN INCHES (MILLIMETERS) UNLESS OTHERWISE SHOWN.

REVISIONS	
NAME	DATE
DWS	11/96
JAF	12/02
NCHRP 350	04/03
JAF	2/06
SPB	1/07

ILLINOIS DEPARTMENT OF TRANSPORTATION  
 TRAFFIC CONTROL DETAILS  
 FOR FREEWAY  
 SHOULDER CLOSURES  
 PARTIAL RAMP CLOSURES  
 DESIGNED BY: DWS  
 DRAWN BY:  
 CHECKED BY:  
 TC-17

PLOT DATE: 3/7/2007  
 FILE NAME: K:\GIS\104\10417.dwg  
 PLOT SCALE: 1/8"=1'-0"  
 USER NAME: bburdett

CONTRACT NO.		TOTAL SHEETS		SHEET NO.	
F.A.P. RTE.	SECTION	COUNTY	VAR 2008-95 LS	VARIOUS	29
STA.	TO STA.				
FED. ROAD DIST. NO.	ILLINOIS FED. AID PROJECT		CONTRACT 60E76		