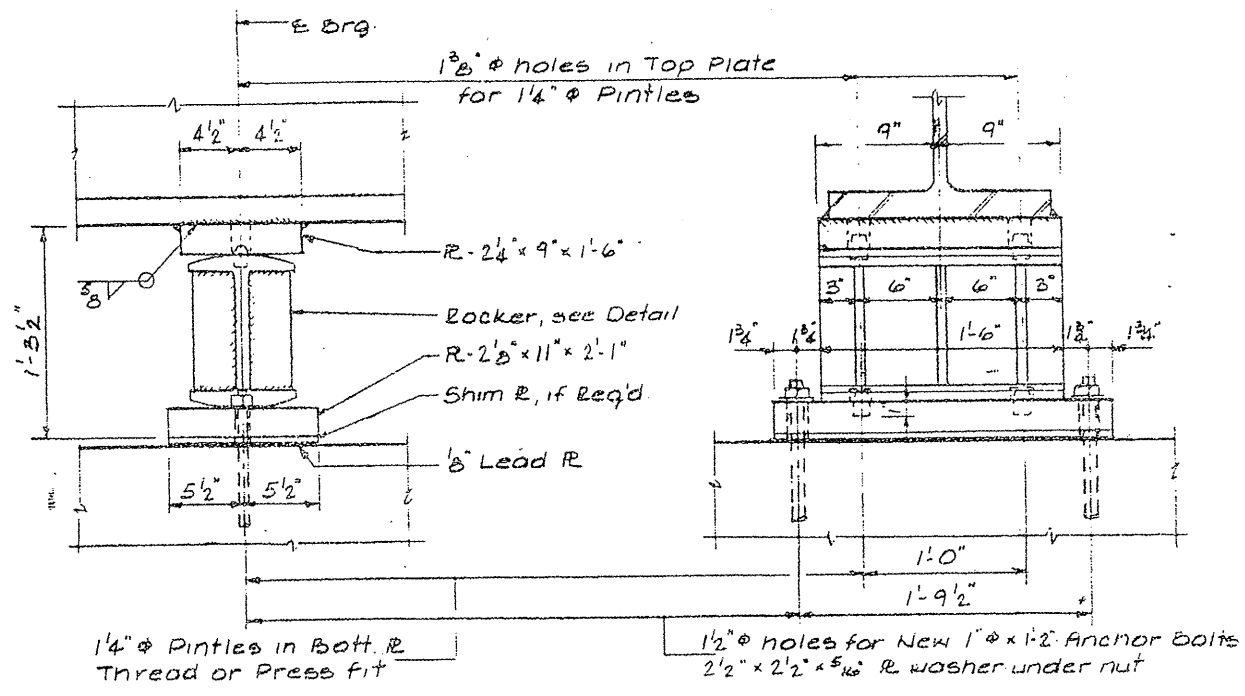
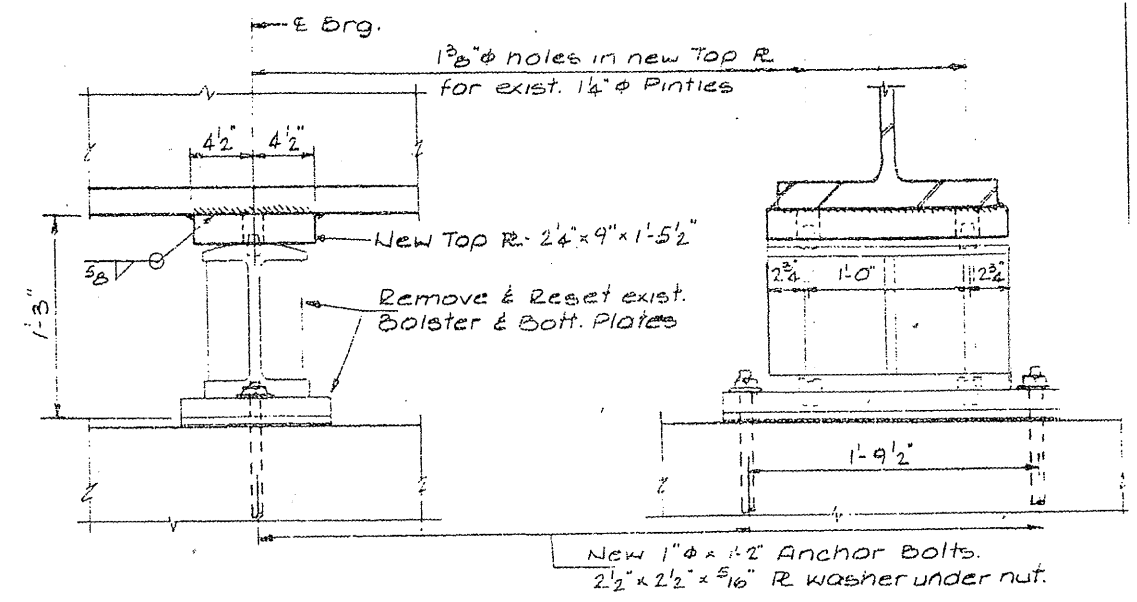


| | | | | |
|------------------|------------------------|-------------------|--------------------|--------------------|
| ROUTE VARIOUS | SECTION 2008-052 BP | COUNTY VARIOUS | TOTAL SHEETS 19 | SHEET NUMBER 8A |
|------------------|------------------------|-------------------|--------------------|--------------------|

CONTRACT 60F03

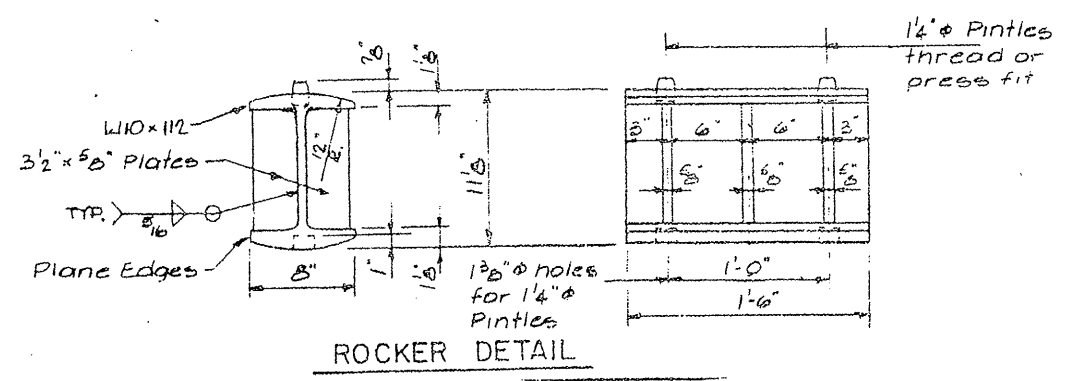


BEARING - PIER 3 - BEAMS 1 & 12



BEARING - PIER 2 - BEAMS 1 & 12

Note: For Beams 1 & 12, 30WF124 at Piers 1 & 4: When Pier cap cantilever removed clean & salvage existing bearings for reuse. Provide new 1" x 1 1/2" Anchor bolts with nuts & washers. Provide temporary support for beams. Cost incidental to Structural steel.



ROCKER DETAIL

FOR INFORMATION ONLY

ILLINOIS DEPARTMENT OF TRANSPORTATION
EXISTING BRIDGE PLAN
LOCATION 1, SN 047-0006