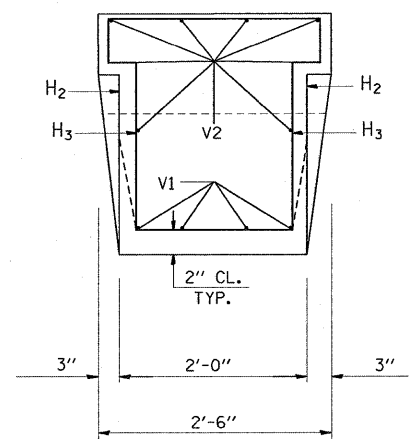
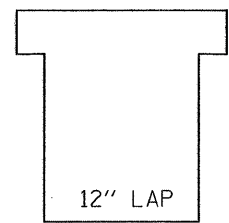


GUARD RAIL TRANSITIONS

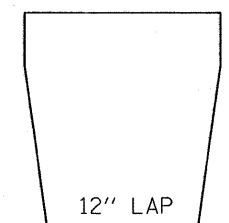
NOTES: CLASS X CONCRETE SHALL BE USED THROUGHOUT  
REINFORCEMENT TO BE SIZE #4 UNLESS OTHERWISE  
NOTED



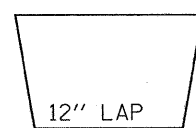
#6 DOWEL BARS  
DRILL AND GROUT ON ROW OF THREE BARS



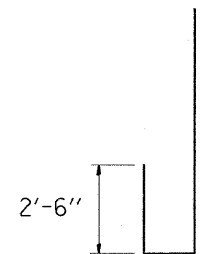
H<sub>3</sub>-2 EACH



H<sub>2</sub>-4 EACH



H<sub>1</sub>-2 EACH



V<sub>1</sub>-4 EACH



V<sub>2</sub>-8 EACH

FILE NAME = W:\diststd\22x34\bm04.dgn	USER NAME = midyja	DESIGNED -	REVISED - R. RITCHIE 05-02-00	<b>STATE OF ILLINOIS DEPARTMENT OF TRANSPORTATION</b>	<b>TYPICAL DETAILS FOR STEEL PLATE BEAM GUARDRAIL ANCHORAGE REPAIR</b>			F.A. RTE.	SECTION	COUNTY	TOTAL SHEETS	SHEET NO.
	PLOT SCALE = 50.000' / IN.	DRAWN - RFL	REVISED -					VAR.	2008-057 GRR	VARIOUS	22	9
PLOT DATE = 8/27/2008	DATE - 10-31-88	CHECKED -	REVISED -	SCALE: NONE	SHEET NO. 1 OF 1 SHEETS	STA.	TO STA.	BM-04		CONTRACT NO. 60F15		
								FED. ROAD DIST. NO. 1   ILLINOIS   FED. AID PROJECT				