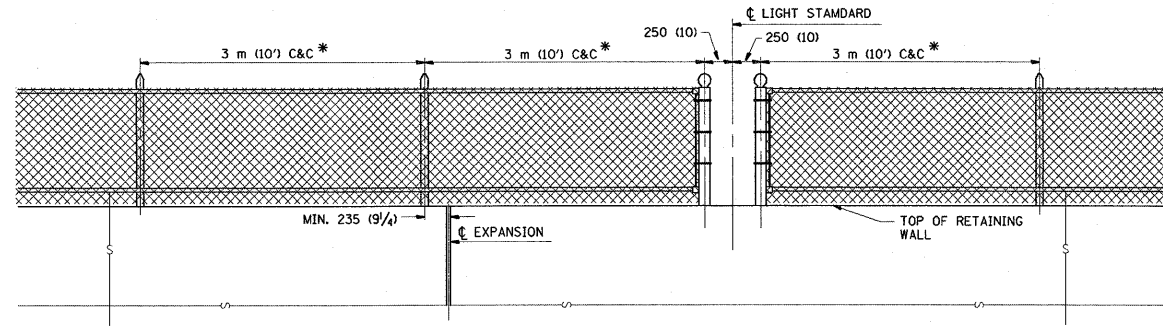


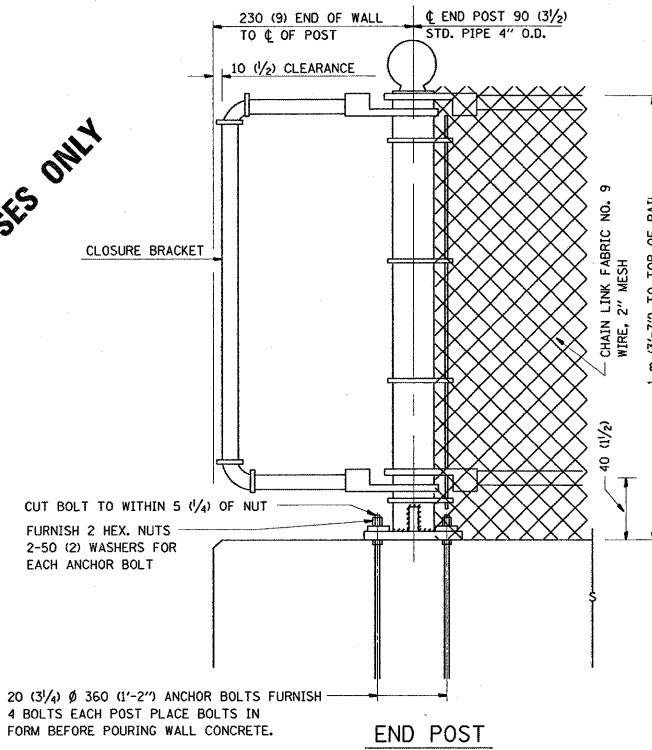
NOTE

* MAXIMUM POST SPACING SHALL BE 3 m (10') C&C EXCEPT WHERE OTHERWISE SHOWN ON PLANS



ELEVATION VIEW OF RETAINING WALL WITH PEDESTRIAN BARRIER TYPE III

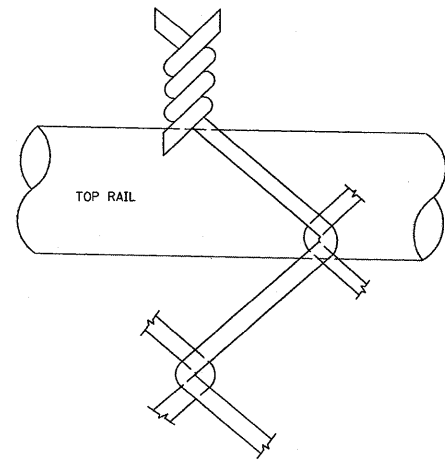
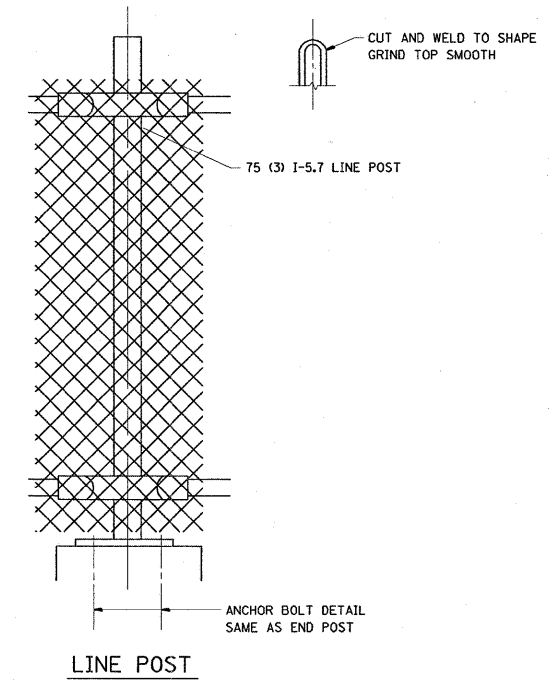
FOR INFORMATIONAL PURPOSES ONLY



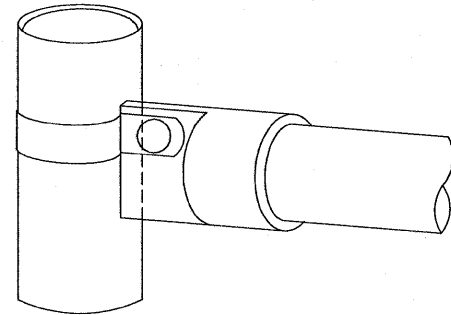
20 (3/4) Ø 360 (1'-2") ANCHOR BOLTS FURNISH 4 BOLTS EACH POST PLACE BOLTS IN FORM BEFORE POURING WALL CONCRETE.

END POST

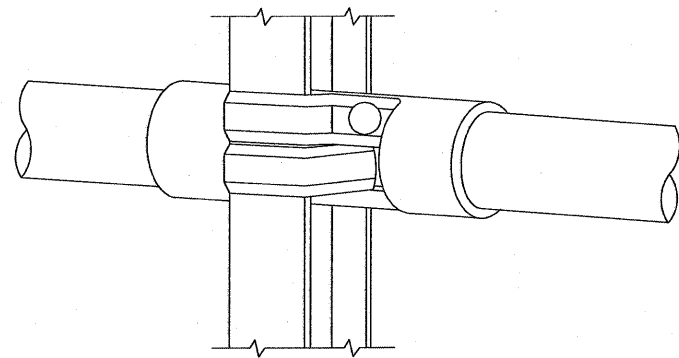
NOTE:
THE COST OF FURNISHING ANCHOR BOLTS, NUTS, & WASHERS TO BE INCIDENTAL



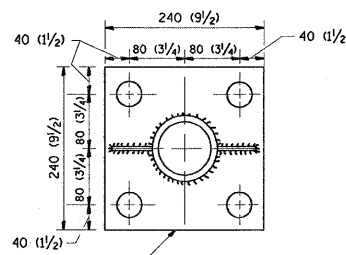
WIRE MESH FABRIC TO BE BARBED AT THE TOP



RAIL FITTING AT END POSTS



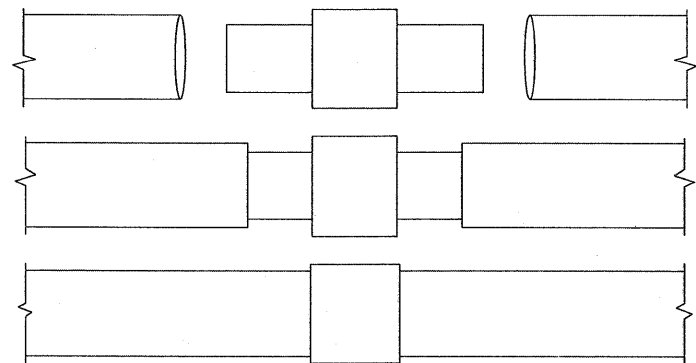
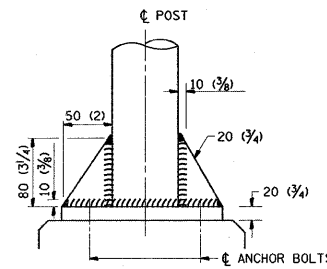
RAIL FITTING ON SECTION LINE POST



240 (9 1/2) X 80 (3 1/4) X 240 (9 1/2) BASE PLATE
4-30 (1 1/4) Ø HOLES FOR END C&C LINE POSTS

ANCHOR PLATE DETAILS

NOTE:
POST, PLATE AND GUSSET ASSEMBLY SHALL BE GALVANIZED AFTER ALL CUTTING, DRILLING, WELDING, AND FABRICATION HAVE BEEN COMPLETED. THE GALVANIZED COATING SHALL CONFORM TO THE REQUIREMENTS OF AASHTO M 120. THE GALVANIZED COATING SHALL NOT BE LESS THAN 610 G/50 M (2.0 OZ./SQ. FT.) OF SURFACE.



EXPANSION COUPLING DETAIL

NOTE:
EXP. COUPLING TO APPEAR IN TOP AND BOTTOM RAILS WHERE EVER EXP. JT. APPEARS IN STRUCTURE.

ALL DIMENSIONS ARE IN MILLIMETERS (INCHES) UNLESS OTHERWISE SHOWN.

FILE NAME = e:\projects\mi47393\main\ss.dgn	USER NAME = mcdjje	DESIGNED -	REVISED -	STATE OF ILLINOIS DEPARTMENT OF TRANSPORTATION	PEDESTRIAN BARRIER TYPE III STD. 10-SS-514 R			F.A. RTE.	SECTION	COUNTY	TOTAL SHEETS	SHEET NO.		
		DRAWN -	REVISED -		SCALE:	SHEET NO.	OF SHEETS	STA.	TO STA.	VAR	2008-059 I	VARIOUS	14	9
		PLOT SCALE = 50,000 ' / IN.	CHECKED -											
		PLOT DATE = 8/28/2008	DATE -											
										CONTRACT NO. 60F17				
										ILLINOIS FED. AID PROJECT				