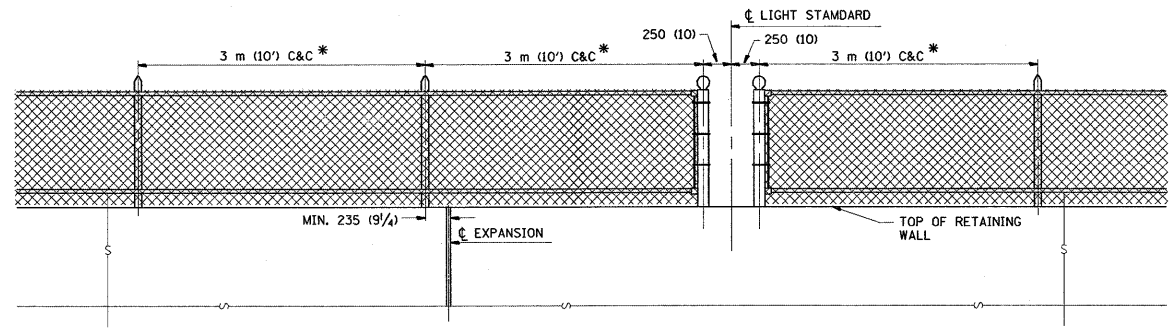
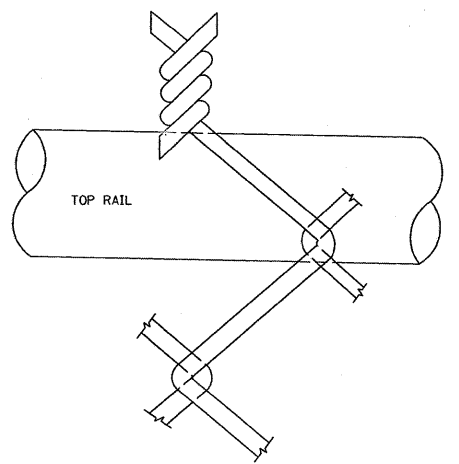


**NOTE**

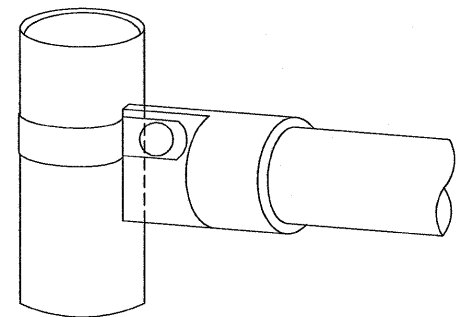
\* MAXIMUM POST SPACING SHALL BE 3 m (10') C&C EXCEPT WHERE OTHERWISE SHOWN ON PLANS



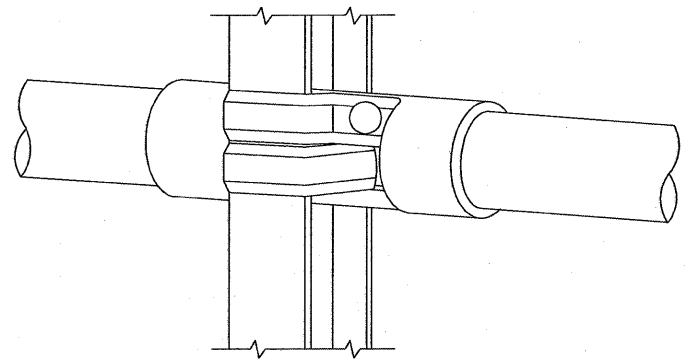
**ELEVATION VIEW OF RETAINING WALL WITH PEDESTRIAN BARRIER TYPE III**



**WIRE MESH FABRIC TO BE BARBED AT THE TOP**

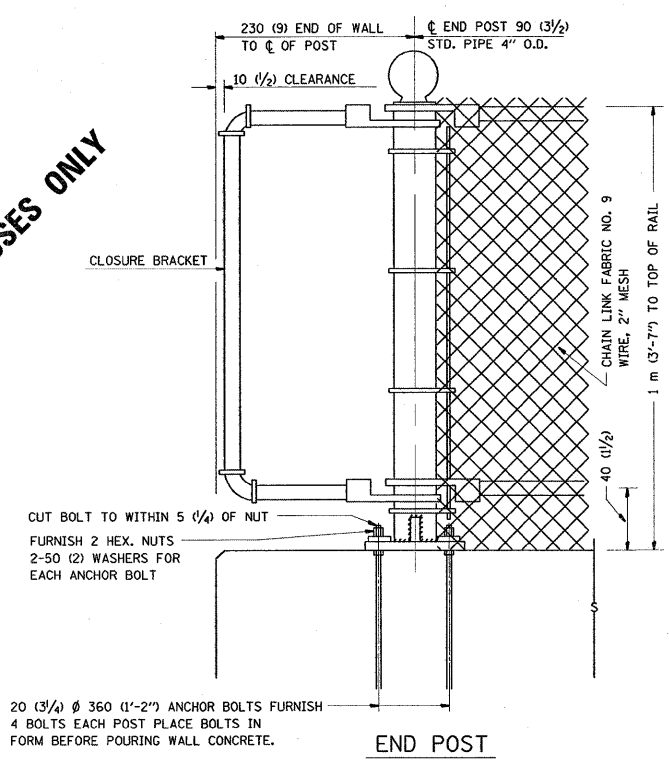


**RAIL FITTING AT END POSTS**



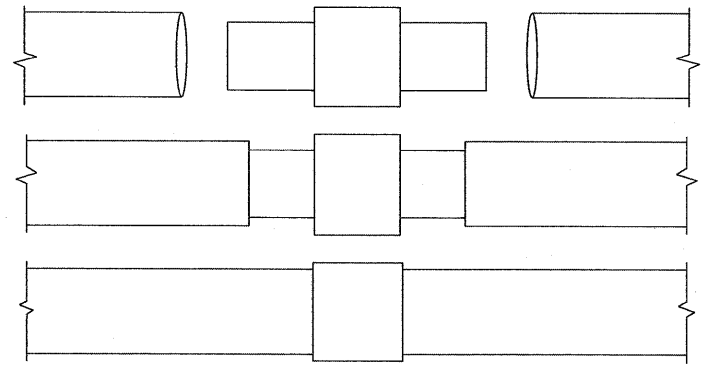
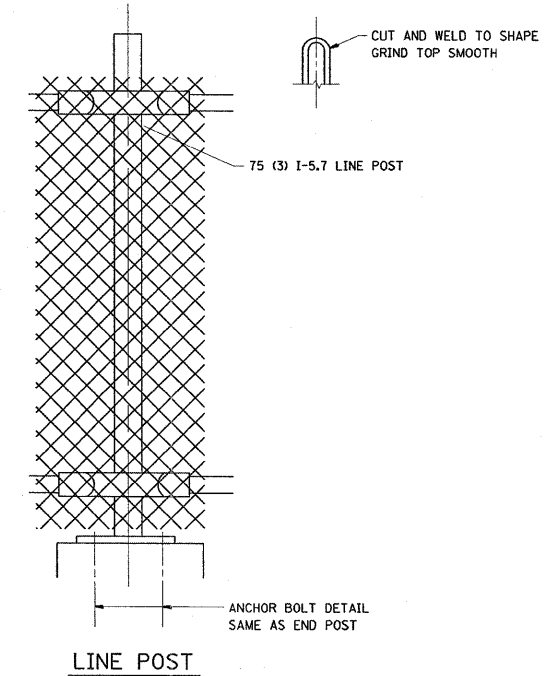
**RAIL FITTING ON SECTION LINE POST**

**FOR INFORMATIONAL PURPOSES ONLY**



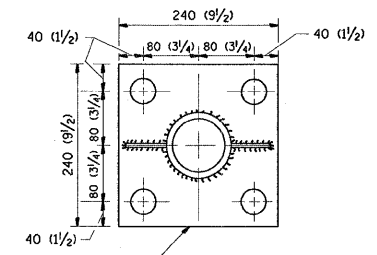
20 (3/4)  $\phi$  360 (1'-2") ANCHOR BOLTS FURNISH 4 BOLTS EACH POST PLACE BOLTS IN FORM BEFORE POURING WALL CONCRETE.

**NOTE:**  
THE COST OF FURNISHING ANCHOR BOLTS, NUTS, & WASHERS TO BE INCIDENTAL



**EXPANSION COUPLING DETAIL**

**NOTE:**  
EXP. COUPLING TO APPEAR IN TOP AND BOTTOM RAILS WHERE EVER EXP. JT. APPEARS IN STRUCTURE.



240 (9 1/2) X 80 (3 1/4) X 240 (9 1/2) BASE PLATE  
4-30 (1 1/4)  $\phi$  HOLES FOR END C&C LINE POSTS

**ANCHOR PLATE DETAILS**

**NOTE:**  
POST, PLATE AND GUSSET ASSEMBLY SHALL BE GALVANIZED AFTER ALL CUTTING, DRILLING, WELDING, AND FABRICATION HAVE BEEN COMPLETED. THE GALVANIZED COATING SHALL CONFORM TO THE REQUIREMENTS OF AASHTO M 120. THE GALVANIZED COATING SHALL NOT BE LESS THAN 610 G/50 M (2.0 OZ./SQ. FT.) OF SURFACE.

ALL DIMENSIONS ARE IN MILLIMETERS (INCHES) UNLESS OTHERWISE SHOWN.

FILE NAME = c:\projects\m147393\mainit_aa.dgn	USER NAME = miduja	DESIGNED -	REVISED -	<b>STATE OF ILLINOIS DEPARTMENT OF TRANSPORTATION</b>	<b>PEDESTRIAN BARRIER TYPE III STD. 10-SS-514 R</b>			F.A. RTE.	SECTION	COUNTY	TOTAL SHEETS	SHEET NO.		
		DRAWN -	REVISED -		SCALE:	SHEET NO.	OF SHEETS	STA.	TO STA.	VAR.	2008-060 I	VARIOUS	13	8
		PLOT SCALE = 50.000 / IN.	REVISED -		CONTRACT NO. 60F18									
		PLOT DATE = 8/29/2008	REVISED -		FED. ROAD DIST. NO. [ILLINOIS] FED. AID PROJECT									