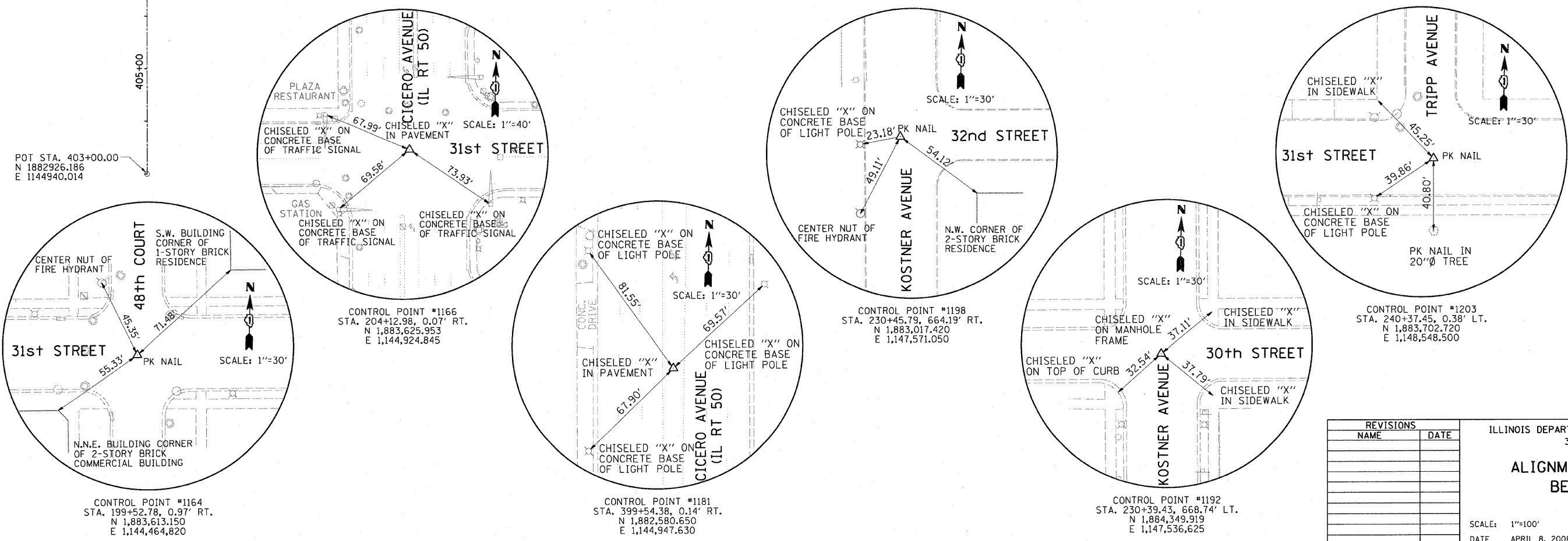
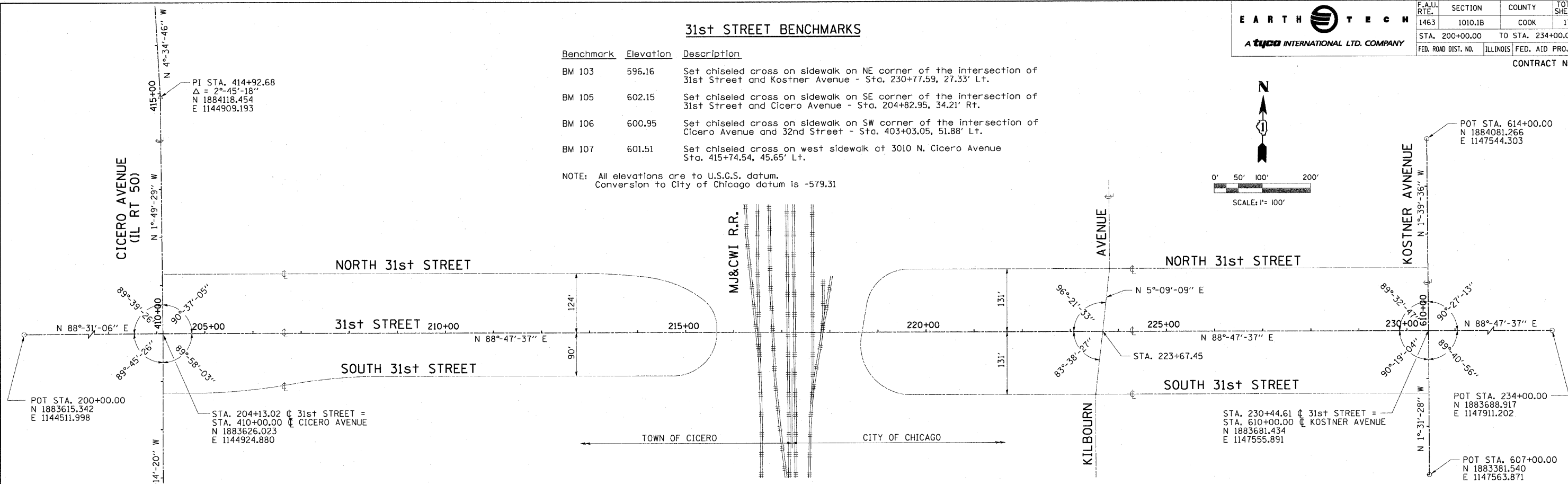
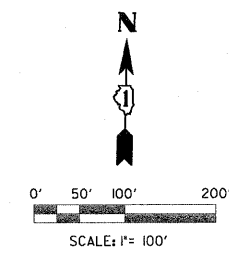


31st STREET BENCHMARKS

Benchmark	Elevation	Description
BM 103	596.16	Set chiseled cross on sidewalk on NE corner of the intersection of 31st Street and Kostner Avenue - Sta. 230+77.59, 27.33' Lt.
BM 105	602.15	Set chiseled cross on sidewalk on SE corner of the intersection of 31st Street and Cicero Avenue - Sta. 204+82.95, 34.21' Rt.
BM 106	600.95	Set chiseled cross on sidewalk on SW corner of the intersection of Cicero Avenue and 32nd Street - Sta. 403+03.05, 51.88' Lt.
BM 107	601.51	Set chiseled cross on west sidewalk at 3010 N. Cicero Avenue Sta. 415+74.54, 45.65' Lt.

NOTE: All elevations are to U.S.G.S. datum.
Conversion to City of Chicago datum is -579.31



REVISIONS		ILLINOIS DEPARTMENT OF TRANSPORTATION	
NAME	DATE	31st STREET	
		ALIGNMENT, TIES AND BENCHMARKS	
		SCALE: 1"=100'	DRAWN BY CJO
		DATE APRIL 8, 2008	CHECKED BY MJE