

TAPER LENGTH CRITERIA FOR WORK ZONES

SPEED LIMITS 40 MPH OR LESS

$$L = \frac{WS^2}{60}$$

W = WIDTH OF CLOSURE (FEET)
S = POSTED SPEED (MPH)
MERGING TAPER = L
SHIFTING TAPER = 1/2 L

SIGN SPACING

POSTED SPEED	SIGN SPACING
55 MPH	500'
50 - 45 MPH	350'
<45 MPH	200'

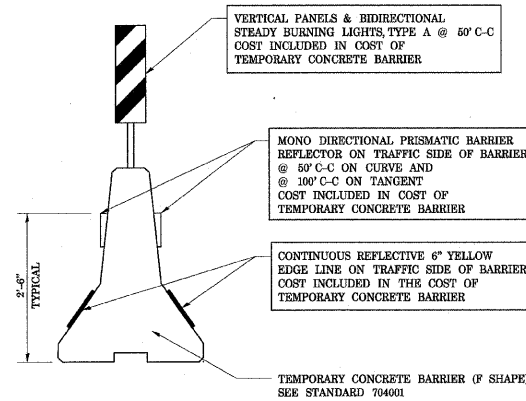
NOTE: PER MUTCD TABLE 6H-3, SIGN SPACING FOR LOW SPEED URBAN FACILITIES CAN BE REDUCED TO 100 FT.

LEGEND

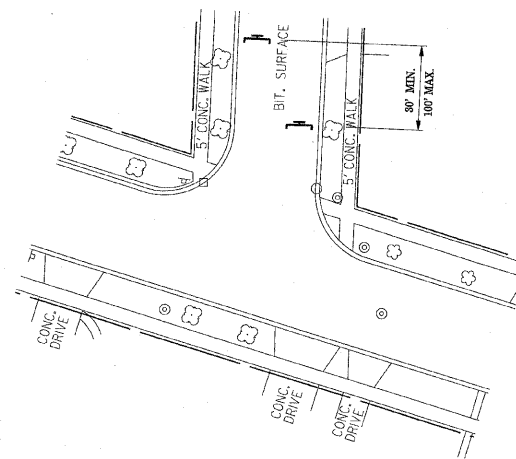
- AREA UNDER CONSTRUCTION
- SIGN ON WOOD POST /BARRICADE AS FEASIBLE
- TRAFFIC CONTROL BARRICADE, TYPE III WITH TYPE A MONODIRECTIONAL FLASHING LIGHT, WITHOUT ATTACHED SIGN /WITH ATTACHED SIGN, 8' MINIMUM.
- TYPE A LOW INTENSITY FLASHING WARNING LIGHT
- LANE AND DIRECTION OF TRAFFIC FLOW
- FLAGS, 16" x 16", ORANGE
- TRAFFIC CONTROL BARRICADE, TYPE II WITH STEADY BURNING LIGHTS

GENERAL NOTES FOR TRAFFIC CONTROL

- ALL THE TRAFFIC CONTROL DEVICES SHALL CONFORM TO THE TRAFFIC CONTROL PLANS AND THE SPECIAL PROVISION FOR CONSTRUCTION ZONE TRAFFIC CONTROL, OR THE LATEST EDITION OF THE STATE OF ILLINOIS "MANUAL OF UNIFORM TRAFFIC CONTROL DEVICES FOR STREETS AND HIGHWAYS," AND SHALL BE IN PLACE BEFORE CONSTRUCTION IS STARTED.
- THE TRAFFIC CONTROL PLANS SHALL SERVE AS A GUIDE FOR SAFE DIVERSION OF TRAFFIC DURING EXECUTION OF THIS CONTRACT. HOWEVER, THE CONTRACTOR MAY IMPROVE OR MODIFY THE TRAFFIC CONTROL PLANS FOR HIS CONSTRUCTION NEEDS BUT NOT AT THE EXPENSE OF PUBLIC SAFETY OR CONVENIENCE. ANY CONTRACTOR-PROPOSED TRAFFIC CONTROL PLANS SHALL BE SUBMITTED FOR THE WRITTEN APPROVAL OF THE ENGINEER.
- SIGN AND BARRICADE LOCATIONS MAY BE ADJUSTED IN THE FIELD AS DIRECTED BY THE ENGINEER. ANY EXISTING TRAFFIC SIGNS THAT CONFLICT WITH THIS WORK SHALL BE COVERED AS DIRECTED BY THE ENGINEER. EXISTING TRAFFIC CONTROL SIGNS AND DEVICES WILL BE REMOVED BY THE ILLINOIS DEPARTMENT OF TRANSPORTATION AFTER THE TRAFFIC CONTROL REQUIREMENTS ARE MET OR AS AUTHORIZED BY THE ENGINEER; ANY SIGNS OR DEVICES LEFT IN PLACE AT THIS TIME ARE TO BE PROTECTED FROM DAMAGE BY THE CONTRACTOR AND ANY DAMAGE CAUSED BY THIS WORK WILL BE PAID FOR BY THE CONTRACTOR.
- ALL TYPE III BARRICADES SHALL HAVE RAILS REFLECTORIZED ON BOTH FACES UNLESS OTHERWISE NOTED. STRIPES SHALL BE PROPERLY SLOPED DOWN TOWARD THE TRAFFIC SIDE OR AS SHOWN IN THE ROAD CLOSURE BARRICADE DETAIL FOR FULL ROAD CLOSURES. TYPE A LOW INTENSITY FLASHING WARNING LIGHTS SHALL BE INSTALLED ON BOTH SIDES OF THE BARRICADE.
- THE COST OF SUPPLYING, ERECTING, AND MAINTAINING BARRICADES, WARNING LIGHTS, AND DETOUR SIGNAGE WILL BE INCLUDED IN THE CONTRACT LUMP SUM PRICE FOR TRAFFIC CONTROL AND PROTECTION.



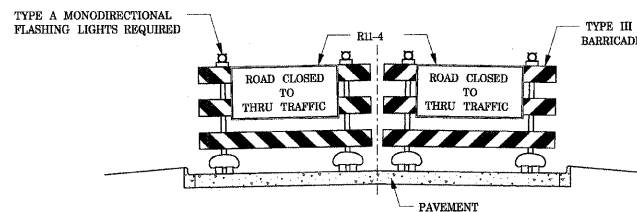
TEMPORARY CONCRETE BARRIER TYPICAL DETAIL



ROAD CLOSED TO THRU TRAFFIC PLAN VIEW

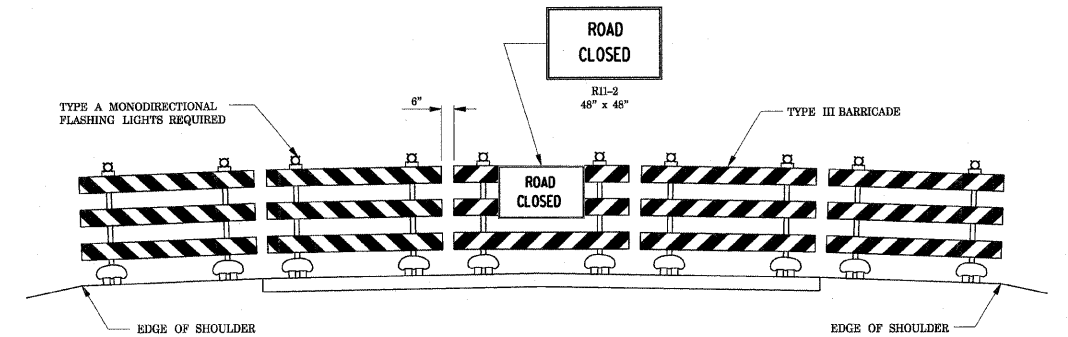
TRAFFIC CONTROL SIGNING LEGEND

	W20-1(0) 48" x 48"		Q20-2(0) 48" x 24"		R11-1D1 24" x 18"
	W17-1100 VAR. x 9"		R4-7 24" x 30"		R11-1I02 24" x 30"
	W20-0R(0) 48" x 48"		R3-8 30" x 30"		R1-1 36" x 36"
	W20-0L(0) 48" x 48"		R3-6L 30" x 36"		R5-1 36" x 36"
	W20-3(0) 48" x 48"		R3-6B 30" x 12"		R3-7L 30" x 30"
	R11-2 48" x 30"		R3-6R 30" x 36"		W19-1 24" x 24"



ROAD CLOSED TO THRU TRAFFIC APPROACH VIEW

REFLECTORIZED STRIPING SHALL APPEAR ON BOTH SIDES OF THE BARRICADES. THE BARRICADES SHALL BE TO THE EDGE OF THE PAVEMENT EXCEPT WHEN OTHERWISE DIRECTED BY THE ENGINEER OR SHOWN ON THE DETAILED CONSTRUCTION PLANS.



ROAD CLOSED TO ALL TRAFFIC APPROACH VIEW

REFLECTORIZED STRIPING MAY BE OMITTED ON THE BACK SIDE OF THE BARRICADES. THE BARRICADES SHALL BE TO THE EDGE OF THE SHOULDERS EXCEPT WHEN OTHERWISE DIRECTED BY THE ENGINEER OR SHOWN ON THE DETAILED CONSTRUCTION PLANS.

TYPICAL APPLICATIONS OF TYPE III BARRICADES CLOSING A ROAD

SPACING OF TYPE III BARRICADES SHALL BE IN ACCORDANCE WITH IDOT STANDARD 702001

REVISIONS	
NAME	DATE

ILLINOIS DEPARTMENT OF TRANSPORTATION
31st STREET
SUGGESTED MAINTENANCE OF TRAFFIC DETAILS

SCALE: N.T.S. DRAWN BY: CJO
DATE: APRIL 8, 2008 CHECKED BY: MJJ