

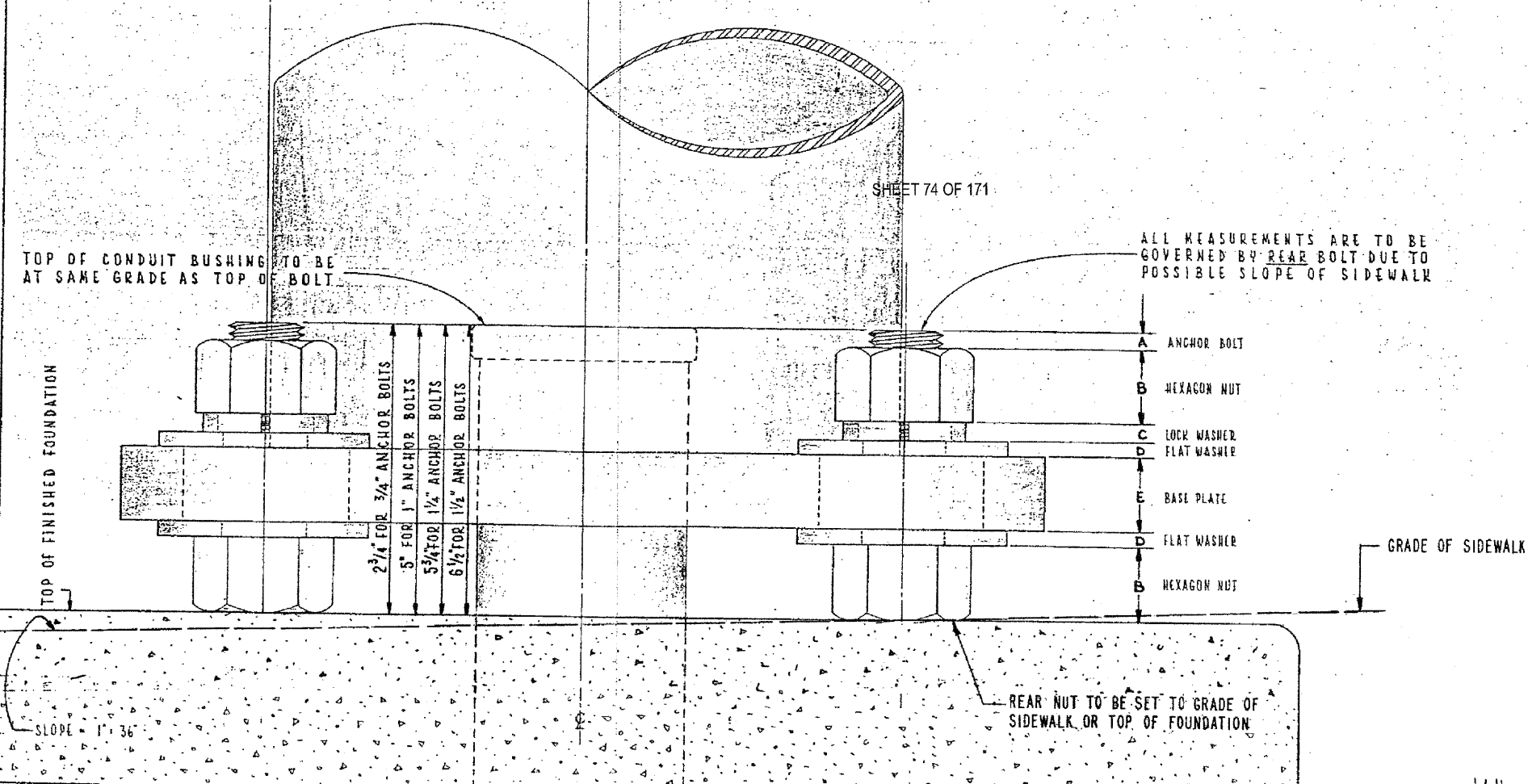
NOTE:
BOLT COVER
NOT SHOWN

INSTALLATION NOTES

- STEP 1 COAT EXPOSED PORTION OF ANCHOR BOLTS WITH APPROVED ANTI RUSTING GREASE ("NO-DX" OR EQUAL).
- STEP 2 INSTALL LOWER LEVELLING NUTS & WASHERS. SET AT PROPER GRADE WITH HAND LEVEL, USE TABLE FOR APPROPRIATE DIMENSIONS.
- STEP 3 MOUNT POLE OR PEDESTAL, ATTACH TOP WASHERS & NUTS HAND TIGHT.
- STEP 4 PLUMB POLE OR PEDESTAL AFTER ALL MASTARMS, STREET LIGHTS, TRAFFIC SIGNALS & OTHER APPURTENANCES ARE ATTACHED TO POLE & TIGHTEN ALL NUTS.
- STEP 5 ATTACH NUT COVERS WHERE REQUIRED.
- STEP 6 DO NOT GROUT IN SPACE BETWEEN BOTTOM OF POLE & TOP OF FOUNDATION. TOP OF FOUNDATION OR SURFACE OF SIDEWALK MUST BE LEFT CLEAN AND SMOOTH.
- STEP 7 POLE OR PEDESTAL IS TO BE PERFECTLY PLUMB, NO "RAKE" IS TO BE LEFT.

IF NECESSARY:
ANCHOR BOLT TO BE TRIMMED WITH SAW.
DO NOT BURN, AS THIS DRASTICALLY REDUCES
THE TENSILE STRENGTH OF ANCHOR BOLT.
COAT ANCHOR BOLT WITH RUST-OLEUM HARD HAT ZINC RICH
COMPOUND.

T A B L E							
H I Z U	ANCHOR BOLT SIZE						
	1"	1 1/4"	1 1/2"	3/4"			ALUM. PED.
	POLE GAUGES						
	7 GA.	3 GA.	7 GA.	3 GA.	7 GA.	3 GA.	
A	7/16"	7/16"	1/8"	1 5/16"	1 1/8"	7/8"	3/4"
B	1"	1"	1/4"	1 1/4"	1 1/2"	1 1/2"	3/4"
C	1/4"	1/4"	5/16"	5/16"	3/8"	3/8"	3/16"
D	5/32"	5/32"	1/4"	1/4"	1/4"	1/4"	5/32"
E	1"	1"	1/4"	1 1/2"	1 1/2"	1 3/4"	5/8"



ALL MEASUREMENTS ARE TO BE GOVERNED BY REAR BOLT DUE TO POSSIBLE SLOPE OF SIDEWALK

REAR NUT TO BE SET TO GRADE OF SIDEWALK OR TOP OF FOUNDATION

CONSTRUCTION METHOD FOR "DOUBLE-NUT" INSTALLATION OF POLES AND PEDESTALS

CITY OF CHICAGO
DEPT. OF STREETS AND SANITATION
BUREAU OF ELECTRICITY
DIVISION OF ELECTRICAL ENGINEERING

DRAWN BY: EUGENE GERULIS	CHIEF DRAFTSMAN: E. J. S.	ENGINEER: M. J. S.
SUPERVISING ENGINEER:	ELEC. DESIGN ENGR.	I. W. C. M. O.
ENGINEER OF ELECTRICITY: Michael J. Shis	837	
DEPT. Supt. of ELECTRICITY	DATE: 6-7-85	

SCALE: 1" = 1"

16" x 21"