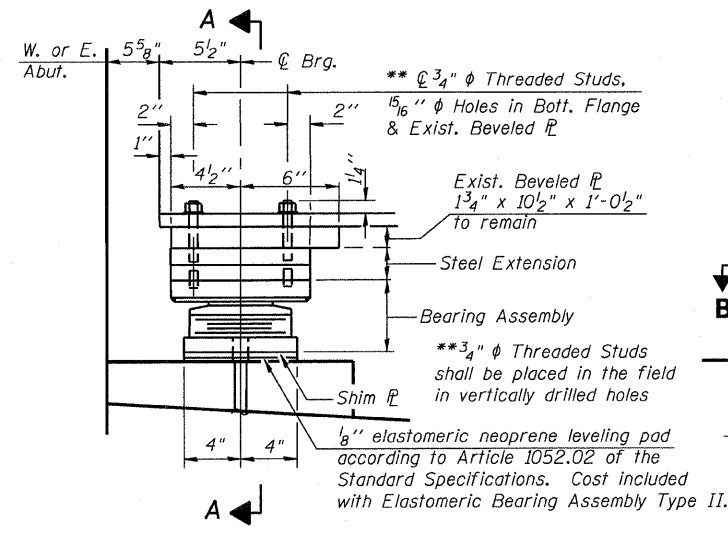
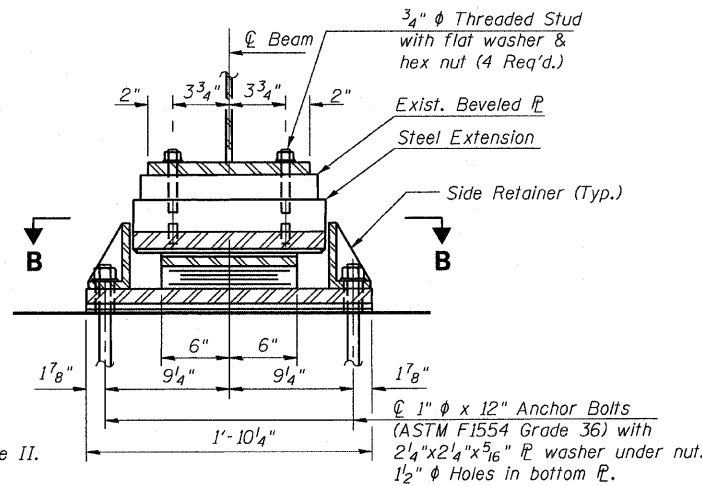


CONTRACT NO. 62196  
 S16 of S23

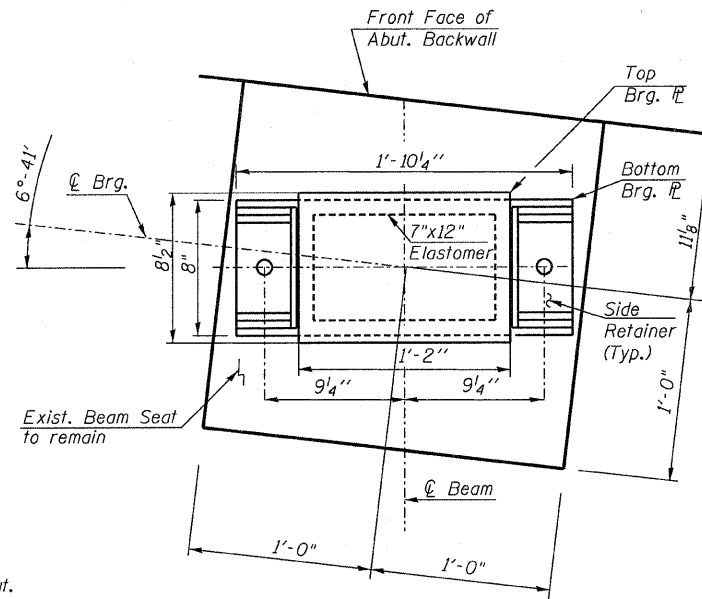


**ELEVATION AT ABUT.**

**TYPE II ELASTOMERIC EXP. BRG.**



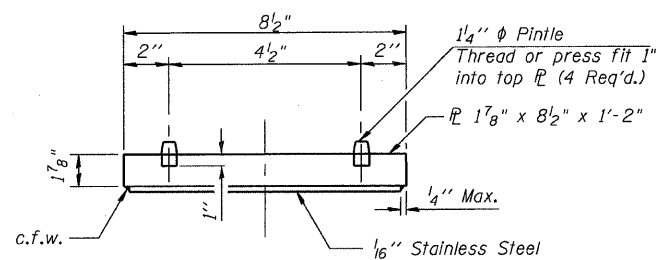
**SECTION A-A**



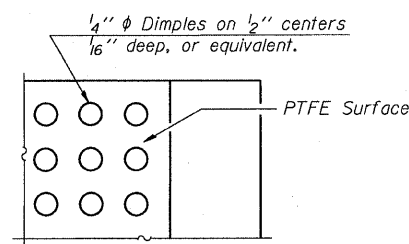
**SECTION B-B**

**Notes:**  
 Anchor bolts shall be ASTM F1554 all-thread (or an Engineer-approved alternate material) of the grade(s) and diameter(s) specified. ASTM A307 Grade C anchor bolts may be used in lieu of ASTM F1554 Grade 36 (Fy=36ksi). The corresponding specified grade of AASHTO M314 anchor bolts may be used in lieu of ASTM F1554.  
 Anchor bolts for Type II bearings shall be placed in holes drilled through the bottom bearing plate after members are in place. Side retainers shall be placed after bolts are installed.  
 Drilled and set anchor bolts shall be installed according to Article 521.06 of the Standard Specifications.  
 Side retainers and other steel members required for the bearing assembly shall be included in the cost of Elastomeric Bearing Assembly, Type II.  
 The 1/8" TFE sheet shall be bonded directly to the top steel plate with a two-component, medium viscosity epoxy resin, conforming to the requirements of the Federal Specification MMM-A-134, Type I. The bond agent shall be applied on the full area of the contact surfaces.  
 Bonding of 1/8" TFE sheet during vulcanizing process will be permitted provided the process and method of adjusting assembly height is approved by the Engineer.

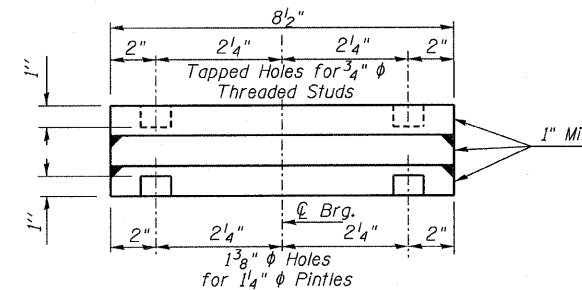
The structural steel plates of the Bearing Assembly shall conform to the requirements of AASHTO M 270 Grade 36. Two 1/8" & two 1/4" adjusting shims shall be provided for each bearing in addition to all other plates or shims and placed as shown on bearing details.  
 All side retainers, anchor bolts, nuts, washers and pintles shall be galvanized according to AASHTO M111 or M232 (as applicable).  
 H.S. bolts in bearing assembly shall be galvanized according to AASHTO M298 Class 50.  
 Prior to ordering any material, the Contractor shall verify in the field all bearing heights and shim thickness dimensions.



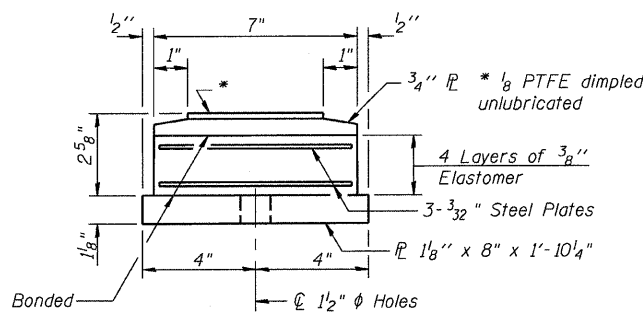
**TOP BEARING ASSEMBLY**



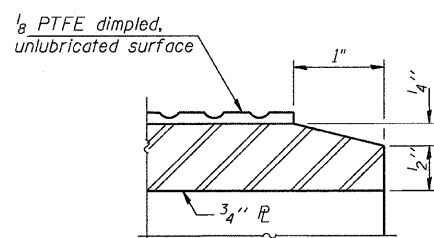
**PLAN-PTFE SURFACE**



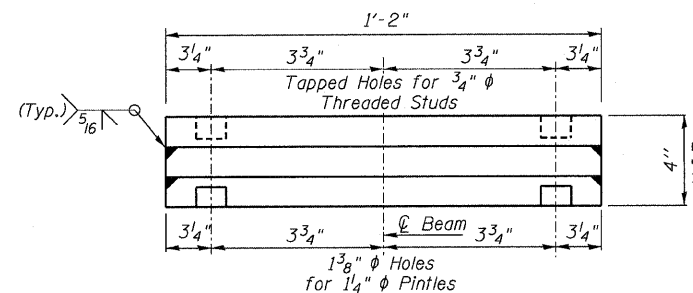
**ELEVATION STEEL EXTENSION**



**BOTTOM BEARING ASSEMBLY**

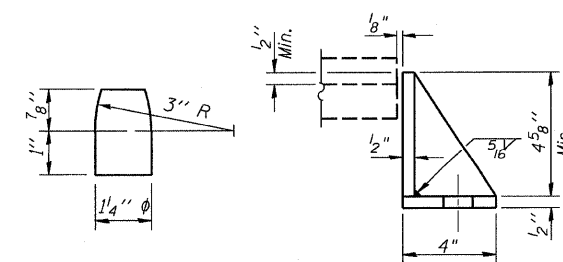


**SECTION THRU PTFE**

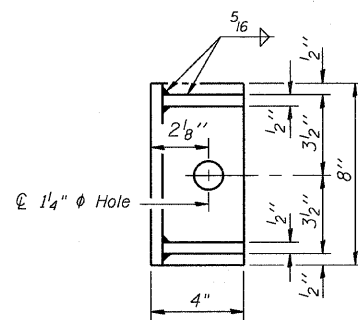


**END VIEW STEEL EXTENSION**

V.I.F.=Verify in Field

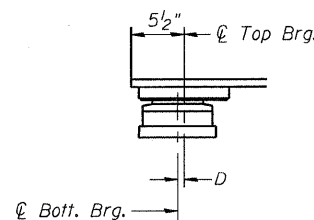


**PINTLE**



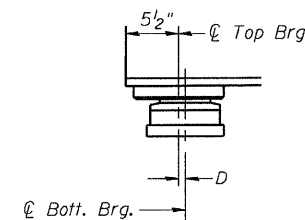
**SIDE RETAINER**

Equivalent rolled angle with stiffeners will be allowed in lieu of welded plates.



**SETTING ANCHOR BOLTS AT EXP. BRG.**

D=1/8" per each 100' of expansion for every 15° temp. change from the normal temp. of 50°F.



**BILL OF MATERIAL**

| Item   | Unit  | Total |
|--|-------|-------|
| Elastomeric Bearing Assembly, Type II        | Each  | 18    |
| *** Furnishing and Erecting Structural Steel | Pound | 2,430 |
| Anchor Bolts, 1"                             | Each  | 36    |

\*\*\*Includes weight of 18 steel extensions only.

| REVISIONS |      |
|-----------|------|
| NAME      | DATE |
|           |      |
|           |      |
|           |      |
|           |      |

ILLINOIS DEPARTMENT OF TRANSPORTATION  
 ELASTOMERIC BEARING ASSEMBLY  
 31 ST. STREET OVER KILBOURN AVE.  
 F.A.U. ROUTE 1463 SECTION 159-1010.1B  
 COOK COUNTY  
 STATION 223+67.45  
 STR. NO. 016-0872

SCALE: VERT. HORIZ. DATE JANUARY 2008 DRAWN BY JHR CHECKED BY IQUS