

SECTION	COUNTY	TOTAL SHEETS	SHEET NO.
08-F3000-20-BT	COOK	29	8
STA. 25+900 TO STA. 26+250			
IDOT PROJECT NO.			
CENTENNIAL TRAIL			

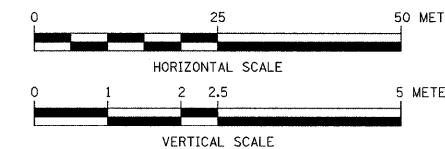
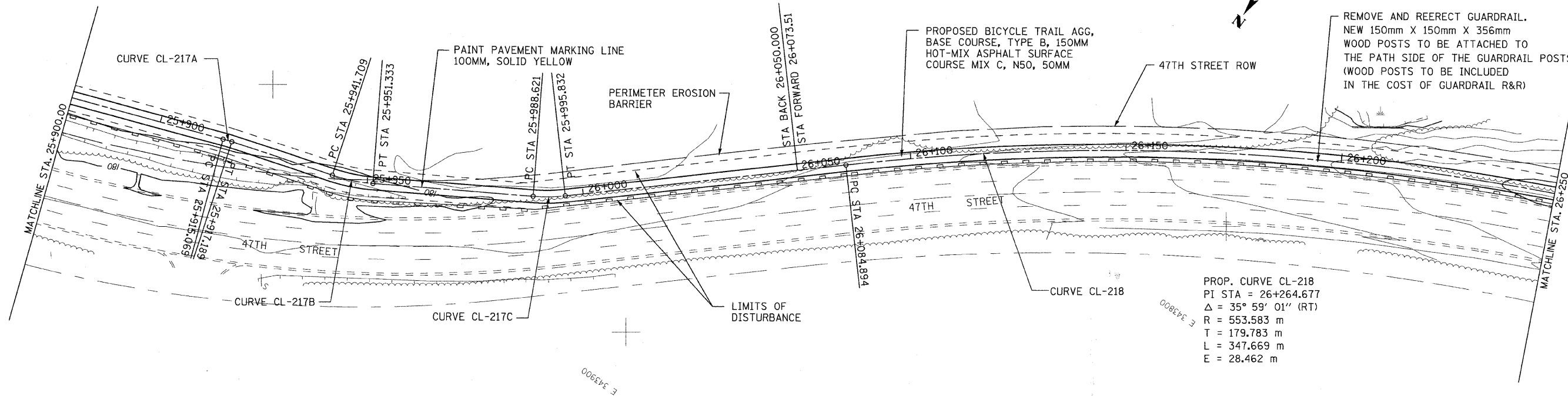
CONTRACT NO. 63052

PROP. CURVE CL-217A
 PI STA = 25+916.130
 $\Delta = 3^\circ 2' 20''$ (RT)
 R = 40.0 m
 T = 1.061 m
 L = 2.121 m
 E = 0.014 m

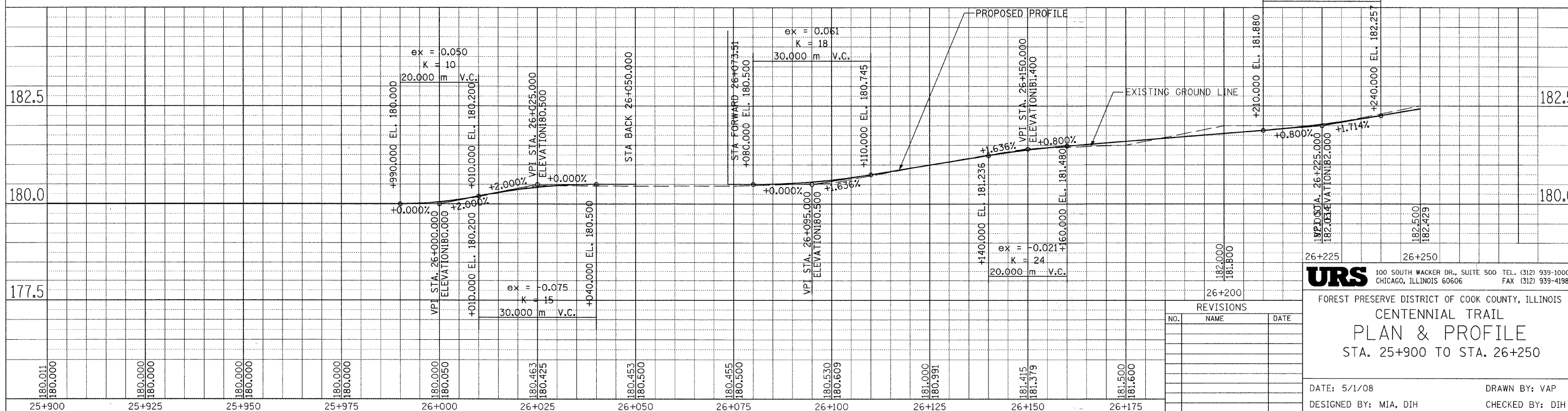
PROP. CURVE CL-217B
 PI STA = 25+946.545
 $\Delta = 13^\circ 47' 13''$ (LT)
 R = 40.0 m
 T = 4.836 m
 L = 9.625 m
 E = 0.291 m

PROP. CURVE CL-217C
 PI STA = 25+992.377
 $\Delta = 10^\circ 43' 55''$ (LT)
 R = 40.0 m
 T = 3.756 m
 L = 7.492 m
 E = 0.176 m

PROP. CURVE CL-218
 PI STA = 26+264.677
 $\Delta = 35^\circ 59' 01''$ (RT)
 R = 553.583 m
 T = 179.783 m
 L = 347.669 m
 E = 28.462 m



ex = 0.034
 K = 33
 30,000 m V.C.



REVISIONS		
NO.	NAME	DATE

URS 100 SOUTH WACKER DR., SUITE 500 TEL. (312) 939-1000
 CHICAGO, ILLINOIS 60606 FAX (312) 939-4198

FOREST PRESERVE DISTRICT OF COOK COUNTY, ILLINOIS
CENTENNIAL TRAIL
PLAN & PROFILE
 STA. 25+900 TO STA. 26+250

DATE: 5/1/08 DRAWN BY: VAP
 DESIGNED BY: MIA, DIH CHECKED BY: DIH