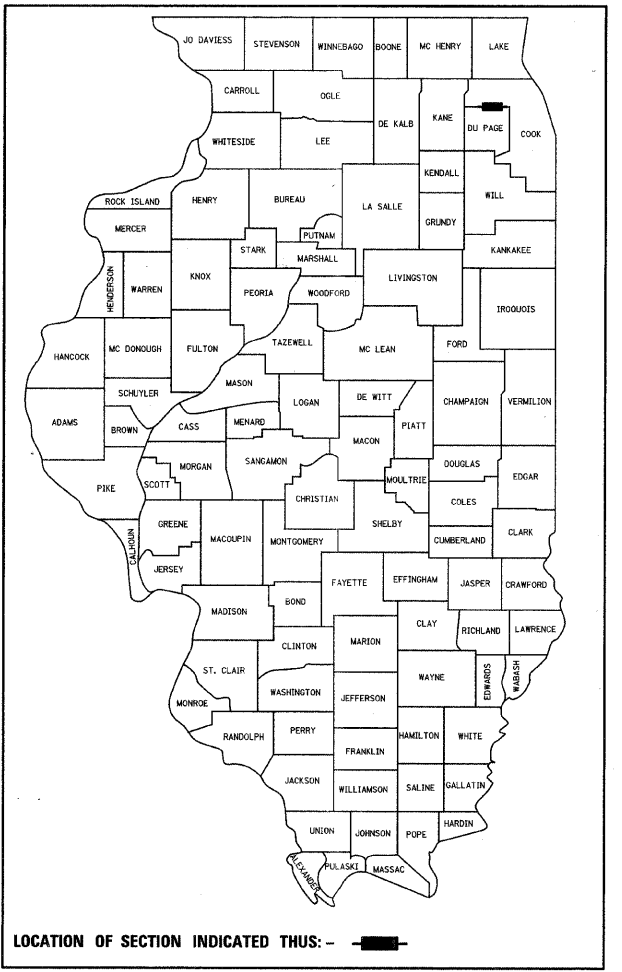


F.A.U. RTE.	SECTION	COUNTY	TOTAL SHEETS	SHEET NO.
2626 & 1346	05-00050-00-CH	COOK/DUPAGE	94	1
COVER SHEET				
FED. ROAD DIST. NO. 7 ILLINOIS FED. AID PROJECT M-8003(569)				

**STATE OF ILLINOIS  
DEPARTMENT OF TRANSPORTATION  
DIVISION OF HIGHWAYS**

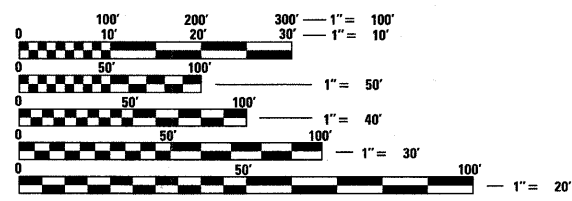
**PLANS FOR PROPOSED FEDERAL AID HIGHWAY  
F.A.U. ROUTE 2626 (ARLINGTON HEIGHTS ROAD)  
F.A.U. ROUTE 1346 (DEVON AVENUE)  
SECTION 05-00050-00-CH  
PROJECT NO. M-8003(569)  
INTERSECTION IMPROVEMENT  
AND TRAFFIC SIGNAL MODERNIZATION  
VILLAGE OF ELK GROVE VILLAGE  
COOK AND DUPAGE COUNTIES  
C-91-144-06**



**INDEX OF SHEETS**

SHEET NO.	DESCRIPTION
1	COVER SHEET
2-3	GENERAL NOTES AND STATE STANDARDS
4-11	SUMMARY OF QUANTITIES
12-14	TYPICAL SECTIONS
15	SCHEDULE OF QUANTITIES
16	ALIGNMENT AND BENCHMARKS
17-22	PLAN AND PROFILE
23-24	MAINTENANCE OF TRAFFIC GENERAL NOTES AND TYPICAL SECTIONS
25-29	MAINTENANCE OF TRAFFIC
30	EROSION CONTROL AND LANDSCAPING
31-36	DRAINAGE AND UTILITIES
37	INTERSECTION GRADING DETAILS
38	PAVEMENT MARKING
39	SIGNING
40	TEMPORARY TRAFFIC SIGNAL PLAN
41	TEMPORARY CABLE PLAN
42-43	TRAFFIC SIGNAL INSTALLATION PLAN
44	CABLE PLAN AND SEQUENCE OF OPERATIONS
45	TRAFFIC SIGNAL SCHEDULE OF QUANTITIES
46-47	INTERCONNECT PLAN
48	INTERCONNECT SCHEMATIC
49	MAST ARM MOUNTED STREET NAME SIGNS
50-53	TRAFFIC SIGNAL DETAILS
54	STREET LIGHTING GENERAL NOTES, LEGEND & BILL OF MATERIAL
55	STREET LIGHTING
56	STREET LIGHTING WIRING PLAN
57-60	STREET LIGHTING DETAILS
61-79	CONSTRUCTION DETAILS
80	RETAINING WALL PLAN & ELEVATION
81-94	CROSS SECTIONS

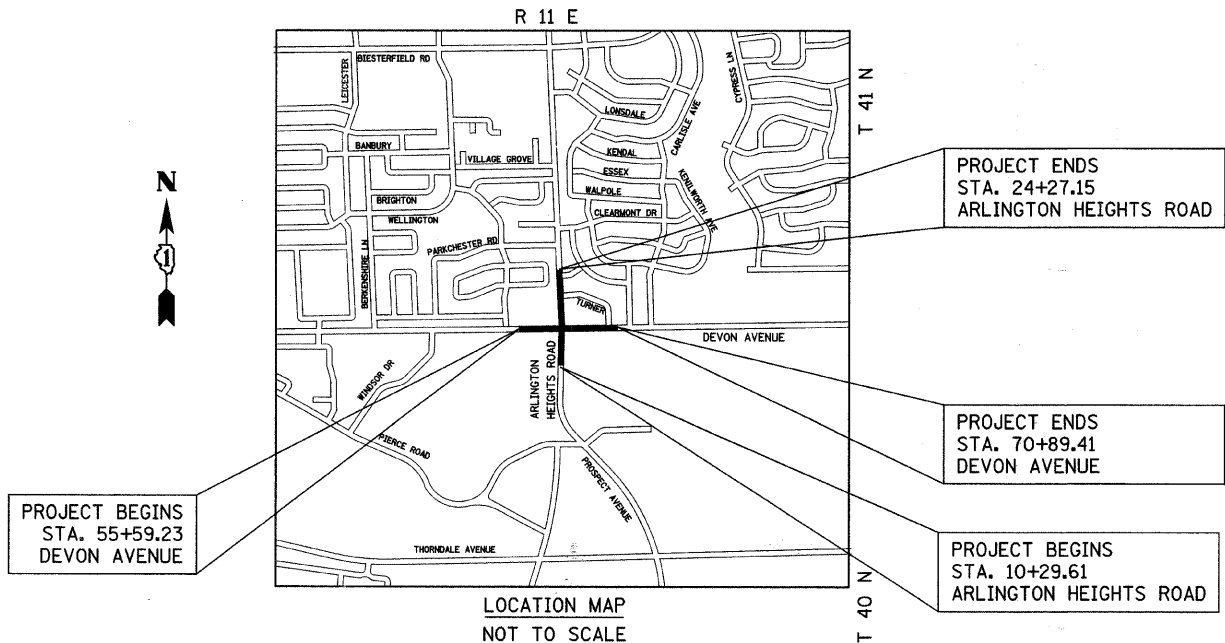
ARLINGTON HEIGHTS ROAD (NORTH OF DEVON AVENUE) = COOK COUNTY HIGHWAY V69  
 ARLINGTON HEIGHTS ROAD (SOUTH OF DEVON AVENUE) = DUPAGE COUNTY HIGHWAY 10  
 DEVON AVENUE = COOK COUNTY HIGHWAY B11



FULL SIZE PLANS HAVE BEEN PREPARED USING STANDARD ENGINEERING SCALES. REDUCED SIZED PLANS WILL NOT CONFORM TO STANDARD SCALES. IN MAKING MEASUREMENTS ON REDUCED PLANS, THE ABOVE SCALES MAY BE USED.

**J.U.L.I.E.**  
 JOINT UTILITY LOCATION INFORMATION FOR EXCAVATION  
 1-800-892-0123 OR 811

**CONTRACT NO. 63055**



DEVON AVENUE - 1,570.2 FT (0.290 MILE) (NET & GROSS)  
 ARLINGTON HEIGHTS ROAD - 1,397.5 FT (0.265 MILE) (NET & GROSS)  
 PROJECT TOTAL - 2,927.8 FT (0.555 MILE) (NET & GROSS)

**DESIGN DESIGNATIONS:**  
 DEVON AVENUE - 30,950 (2010) • MAJOR ARTERIAL TWS-2 • 7.36 (HMA OVERLAY-15)  
 ARLINGTON HEIGHTS ROAD - 24,350 (2010) • MAJOR ARTERIAL TWS-2 • 1.96 (HMA OVERLAY-15)

**POSTED AND DESIGN SPEEDS:**  
 DEVON AVENUE (WEST LEG) - 45 MPH  
 DEVON AVENUE (EAST LEG) - 40 MPH  
 ARLINGTON HEIGHTS ROAD (NORTH LEG) - 40 MPH  
 ARLINGTON HEIGHTS ROAD (SOUTH LEG) - 35 MPH

**STATE OF ILLINOIS  
DEPARTMENT OF TRANSPORTATION  
DIVISION OF HIGHWAYS**

APPROVED Quang J. Bogie JUNE 11, 20 08  
 ELK GROVE VILLAGE, DIRECTOR OF ENGINEERING AND COMMUNITY DEVELOPMENT

PASSED SEPTEMBER 2 2008  
C. H. CHRISTOPHER  
 DISTRICT ONE ENGINEER OF LOCAL ROADS & STREETS

RELEASING FOR BID  
 BASED ON LIMITED  
 REVIEW SEPTEMBER 3, 20 08  
Diana M. O'Keefe  
 DEPUTY DIRECTOR OF HIGHWAYS, REGION ONE ENGINEER



Quang J. Bogie 8-20-08 11-30-09  
 REGISTERED P.E., STATE OF ILLINOIS EXPIRES  
 PLANS PREPARED BY:  
**CIVILTECH**  
 450 E. Devon Ave. Suite 300 - Itasca, Illinois 60143  
 Tel. 630.773.3900 - Fax: 630.773.3975  
 www.civiltechinc.com

ASSOCIATE FIELD ENGINEER: KEVIN STALLWORTH 847-705-4169 SCHALMBURG, IL  
 CONSULTANT ENGINEER: DAVID KREEGER, P.E. CIVILTECH ENGINEERING, INC.