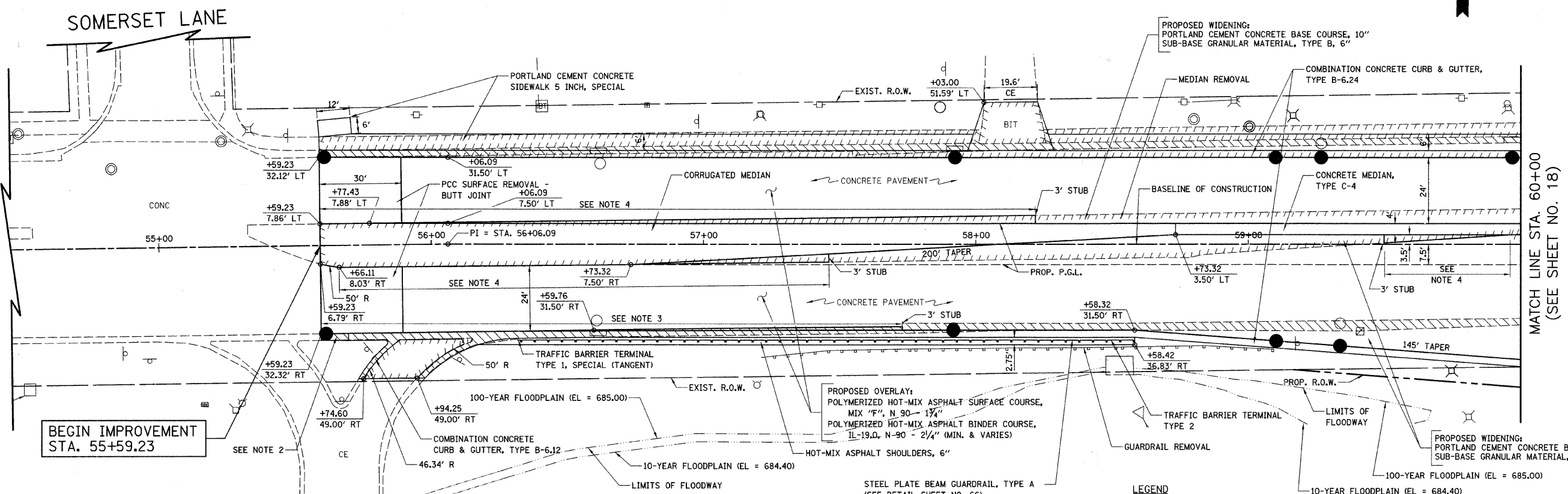


F.A.U. RTE.	SECTION	COUNTY	TOTAL SHEETS	SHEET NO.
1346 & 2626	05-00050-00-CH	COOK/DUPAGE	94	17
STA. 55+72		TO STA. 60+00		
FED. ROAD DIST. NO. 7		ILLINOIS	FED. AID PROJECT M-8003(569)	



BEGIN IMPROVEMENT STA. 55+59.23

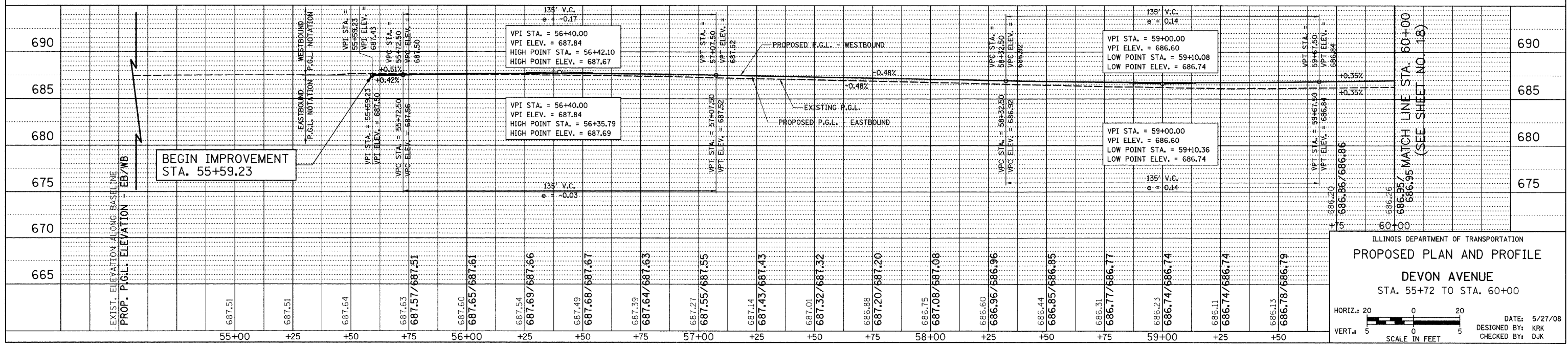
MATCH LINE STA. 60+00 (SEE SHEET NO. 18)

- NOTES:
- SEE TYPICAL SECTIONS AND CCHD DETAIL (SHEET NO. 75) FOR LOCATIONS OF PROPOSED TIE BARS.
  - TRANSITION CURB FROM B-6.24 TO MATCH EXISTING B-6.18 OVER 10'. PAID FOR AS "COMBINATION CONCRETE CURB & GUTTER, TYPE B-6.24".
  - CONSTRUCT BASE COURSE MONOLITHICALLY WITH CURB AND GUTTER. SEE DETAIL SHEET NO. 63.
  - CONSTRUCT BASE COURSE WIDENING MONOLITHICALLY WITH MEDIAN. SEE DETAIL SHEET NO. 63.
  - WHEN REMOVING THE EXISTING CURB AND GUTTER FROM PAVEMENT TO REMAIN, THE CONTRACTOR SHALL SAW CUT THE EXISTING CURB AND GUTTER TO SEVER THE EXISTING TIE BARS TO MAINTAIN A CLEAN, VERTICAL EDGE. THIS WORK SHALL BE INCLUDED IN THE COST OF "COMBINATION CURB AND GUTTER REMOVAL".

PROPOSED OVERLAY:  
 POLYMERIZED HOT-MIX ASPHALT SURFACE COURSE, MIX "F", N 90 - 1 3/4"  
 POLYMERIZED HOT-MIX ASPHALT BINDER COURSE, IL-19.0, N-90 - 2 1/4" (MIN. & VARIES)  
 HOT-MIX ASPHALT SHOULDERS, 6"  
 STEEL PLATE BEAM GUARDRAIL, TYPE A (SEE DETAIL SHEET NO. 66)  
 CONTRACTOR TO ENSURE GUARDRAIL DOES NOT PUNCTURE EXISTING STORM SEWER

LEGEND

- CURB AND GUTTER REMOVAL
- MEDIAN REMOVAL, SIDEWALK REMOVAL, DRIVEWAY REMOVAL
- DETECTABLE WARNINGS, SPECIAL (WITHIN ELK GROVE) DETECTABLE WARNINGS (WITHIN ITASCA)



BEGIN IMPROVEMENT STA. 55+59.23

DEVON AVENUE

MATCH LINE STA. 60+00 (SEE SHEET NO. 18)

ILLINOIS DEPARTMENT OF TRANSPORTATION  
**PROPOSED PLAN AND PROFILE**  
 DEVON AVENUE  
 STA. 55+72 TO STA. 60+00

HORIZ.: 20  
 VERT.: 5  
 SCALE IN FEET

DATE: 5/27/08  
 DESIGNED BY: KRK  
 CHECKED BY: DJK