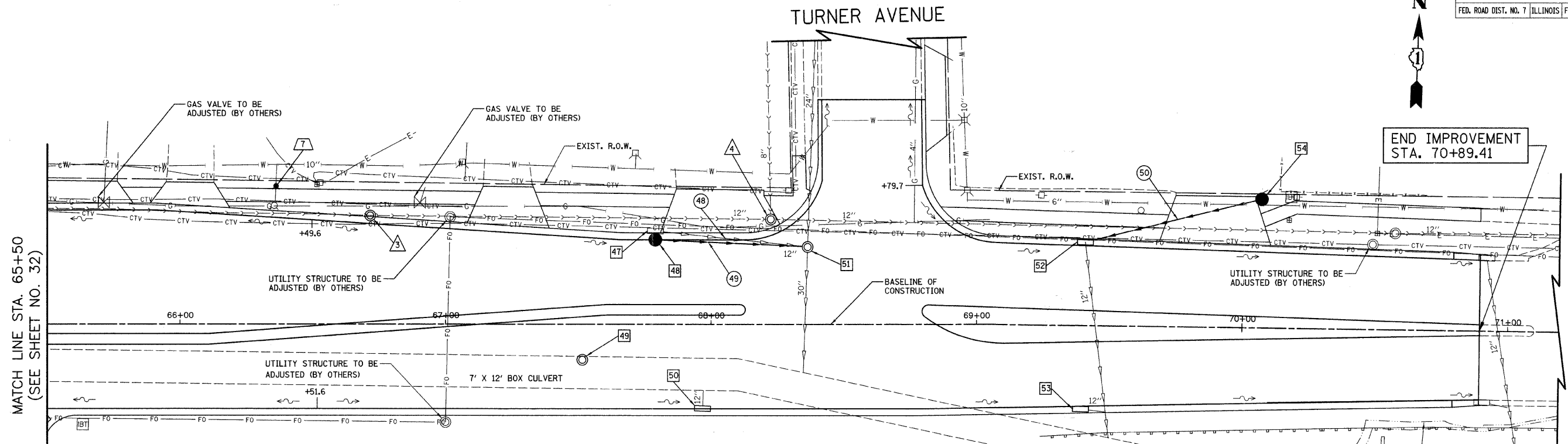


F.A.U. RTE.	SECTION	COUNTY	TOTAL SHEETS	SHEET NO.
1346 & 2626	05-00050-00-CH	COOK/DUPAGE	94	33
STA. 65+50		TO STA. 70+85		
FED. ROAD DIST. NO. 7		ILLINOIS FED. AID PROJECT M-80031569		



MATCH LINE STA. 65+50  
(SEE SHEET NO. 32)

END IMPROVEMENT  
STA. 70+89.41

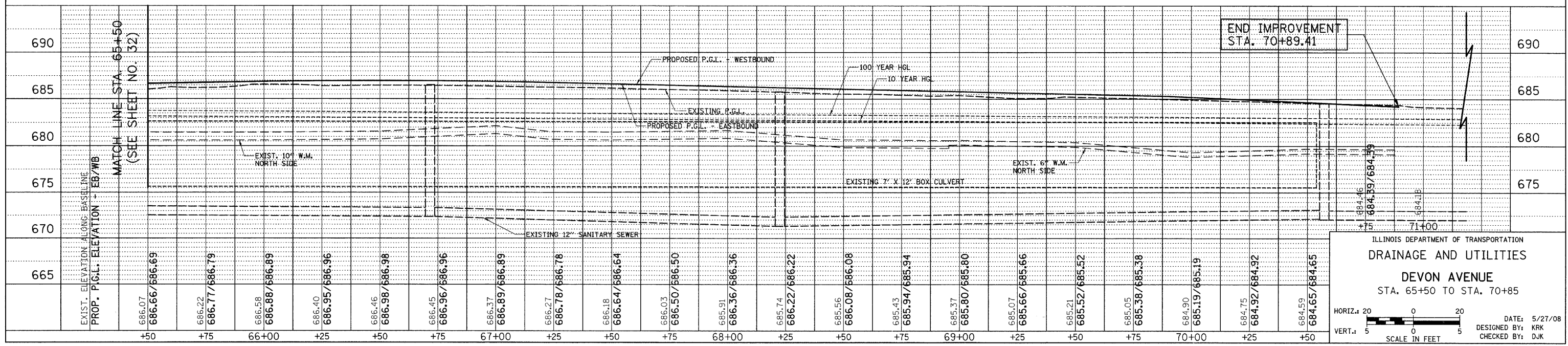
- 47 STA. 67+79.14, 34.7' LT INLET TO BE REMOVED
- 48 STA. 67+79.00, 31.5' LT CB T-A, 4' DIA., T-24 F&G RIM = 685.99 INV = 680.14 (12" E)
- 49 STA. 67+51.54, 13.2' RT FRAME & LID TO BE ADJUSTED EX RIM = 686.03 PR RIM = 686.52
- 50 STA. 67+96.87, 31.4' RT INLET TO BE ADJUSTED W/ NEW T-24 F&G EX RIM = 685.40 PR RIM = 685.90
- 51 STA. 68+36.40, 28.8' LT MH TO BE ADJUSTED EX RIM = 685.25 PR RIM = 685.73 INV = 679.85 (EX 30" S) INV = 680.15 (EX 24" N) INV = 679.85 (12" W)
- 52 STA. 69+41.13, 31.1' LT INLET TO BE ADJUSTED W/ NEW T-24 F&G EX RIM = 684.60 PR RIM = 685.09 INV = 680.55 (EX 12" S) INV = 681.46 (12" NE)
- 53 STA. 69+39.27, 31.2' RT INLET TO BE ADJUSTED W/ NEW T-24 F&G EX RIM = 684.62 PR RIM = 685.10
- 54 STA. 70+06.89, 48.0' LT CB T-C, T-1 FR., O.L. RIM = 684.00 INV = 681.79 (12" SW)

- 48 53' - 12" STORM SEWER REMOVAL
- 49 58' - 12" S.S., CL. A, T-2 @ 0.5 % T.B.F. = 21.7 CU. YD.
- 50 66' - 12" S.S., W.M.R., T-1 @ 0.5 % T.B.F. = 10.8 CU. YD.

- 3 STA. 66+71.63, 40.4' LT SAN. MH TO BE ADJUSTED EX RIM = 686.53 PR RIM = 686.70
- 7 STA. 66+35.43, 44.2' LT FH TO BE MOVED TO STA. 66+36.10, 51.6' LT
- 4 STA. 68+22.52, 39.1' LT SAN. MH TO BE ADJUSTED EX RIM = 685.79 PR RIM = 685.93

DEVON AVENUE

END IMPROVEMENT  
STA. 70+89.41



ILLINOIS DEPARTMENT OF TRANSPORTATION  
DRAINAGE AND UTILITIES  
DEVON AVENUE  
STA. 65+50 TO STA. 70+85

HORIZ. 1" = 20'  
VERT. 1" = 5'

SCALE IN FEET

DATE: 5/27/08  
DESIGNED BY: KRK  
CHECKED BY: DJK