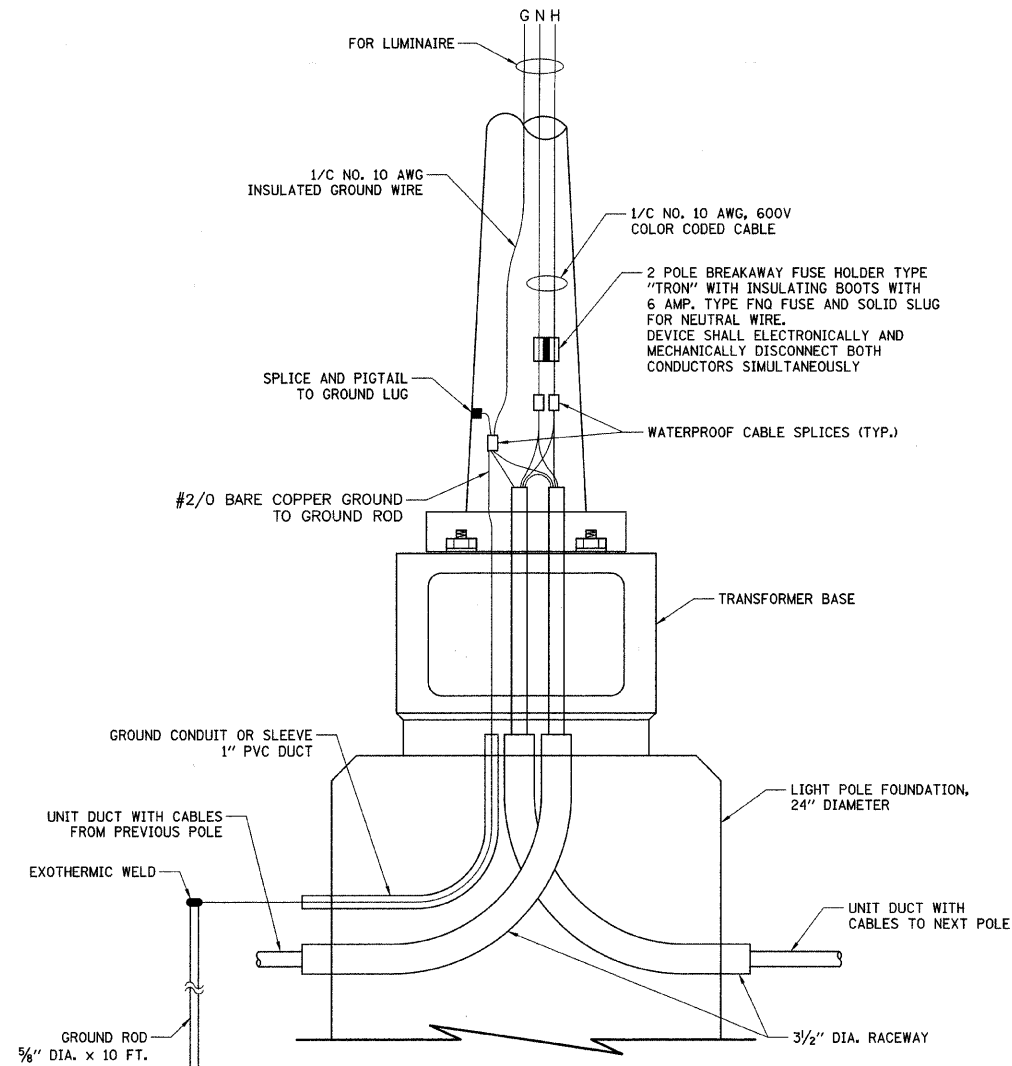
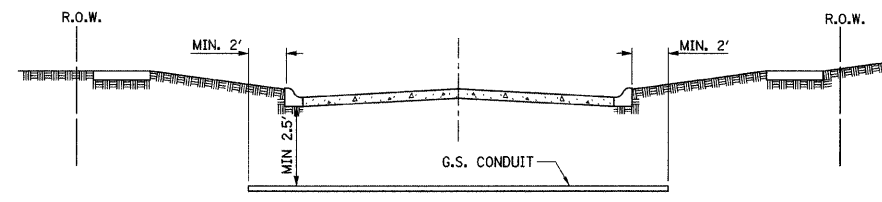


F.A.U. RTE.	SECTION	COUNTY	TOTAL SHEETS	SHEET NO.
1346 & 2626	05-00050-00-CH	COOK/DUPAGE	94	60
LIGHTING DETAILS				
FED. ROAD DIST. NO. 7 ILLINOIS FED. AID PROJECT M-8003(569)				

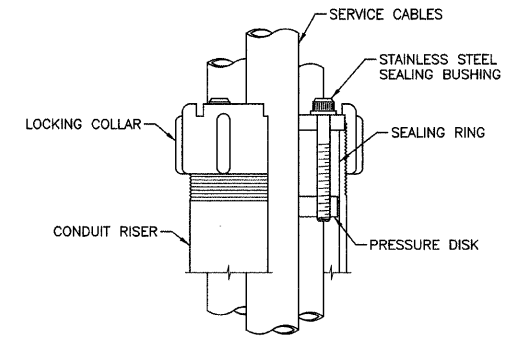


ROADWAY POLE HANDHOLE WIRING DIAGRAM

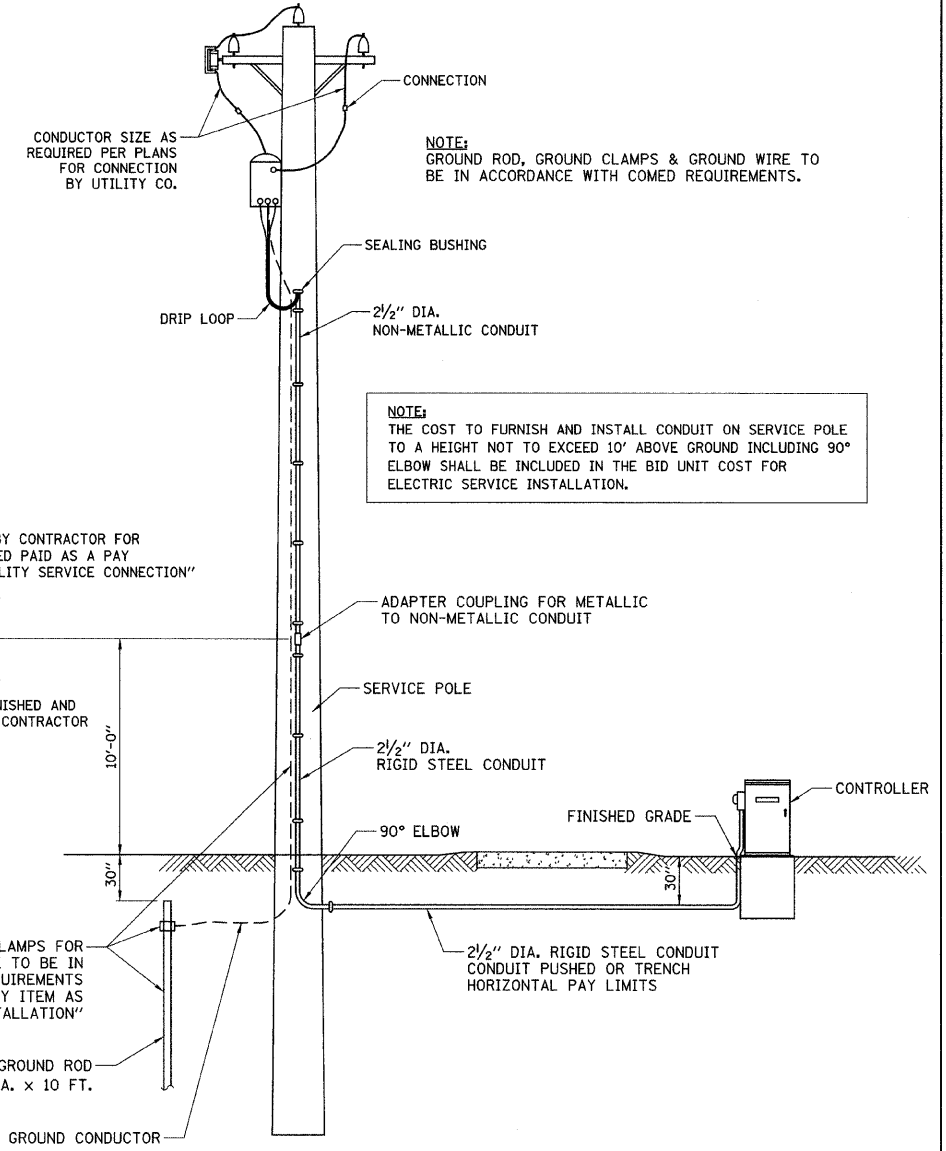


- ① CONDUIT SHALL BE HEAVY WALL RIGID G.S. CONDUIT.
- ② CONDUIT SHALL EXTEND A MINIMUM OF 2 FT. BEYOND BACK OF CURB.
- ③ CONDUIT SHALL BE A MINIMUM OF 2.5 FT. BELOW BOTTOM OF CURB.

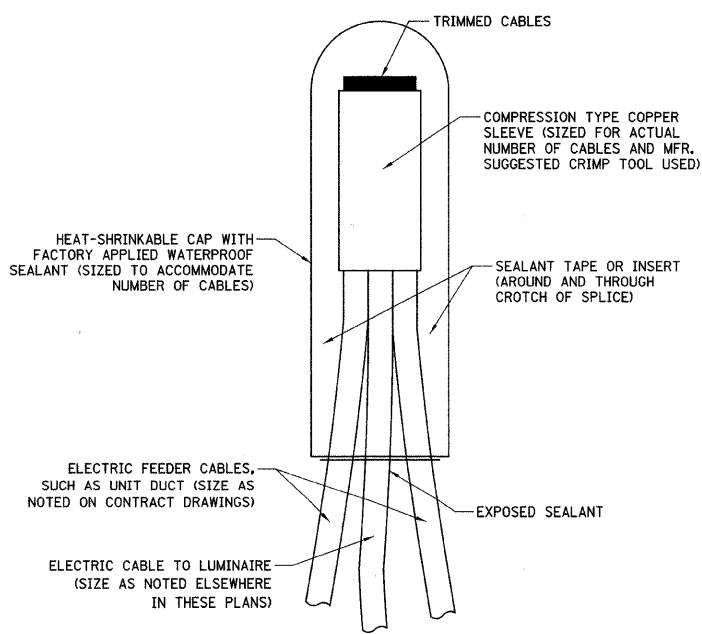
ELECTRICAL CONDUIT UNDER PAVEMENT



SEALING BUSHING DETAIL

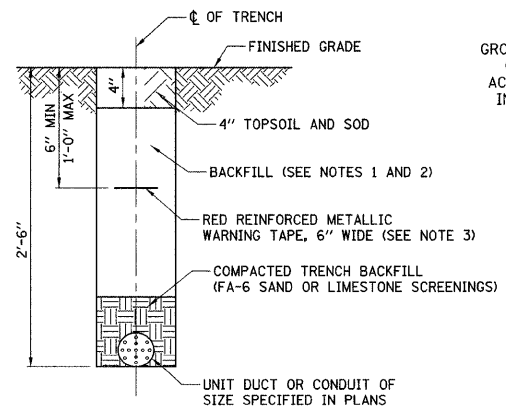


PROPOSED SERVICE INSTALLATION POLE TOP MOUNTED TRANSFORMER



NOTE: NUMBER OF CABLES IN SPLICE MAY VARY
SPlicing ELECTRIC CABLES
BASIC MATERIALS AND METHODS

- NOTES:
1. IN GRASS COVERED AREAS, THE BACKFILL MAY BE COMPACTED EARTH.
 2. TRENCHES WITHIN 2' OF PROPOSED OR EXISTING STREETS, DRIVEWAYS, OR SIDEWALKS WILL BE BACKFILLED WITH COMPACTED FA-6 SAND OR LIMESTONE SCREENINGS.
 3. WARNING TAPE WILL BE RED WITH BLACK LETTERING TO READ "CAUTION - ELECTRIC LINE BURIED BELOW".
 4. ALL GRASS COVERED AREAS DISTURBED DURING CONSTRUCTION WILL BE RESTORED WITH 4" OF TOPSOIL AND SOD.



TYPICAL TRENCH CROSS SECTION