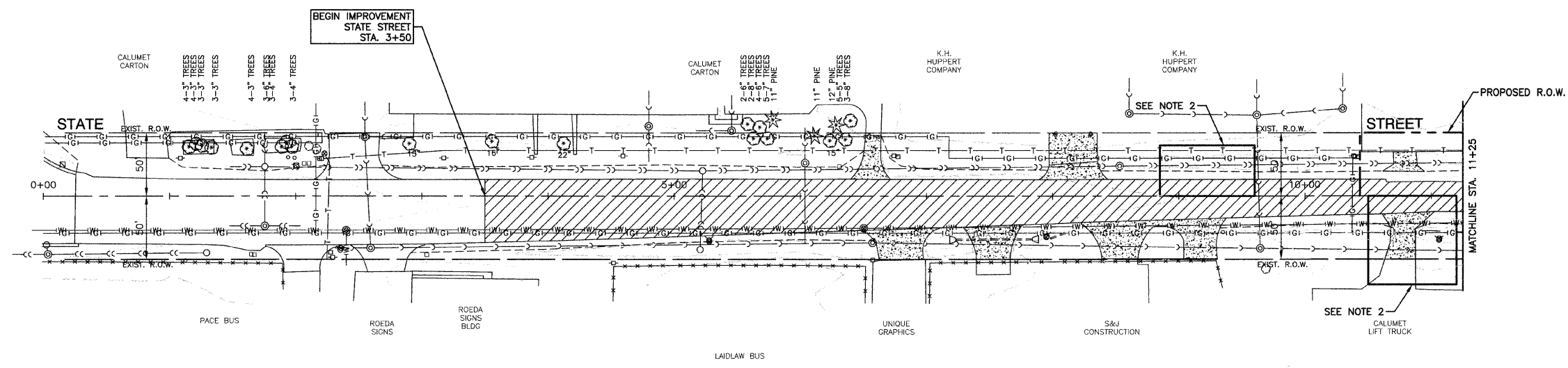
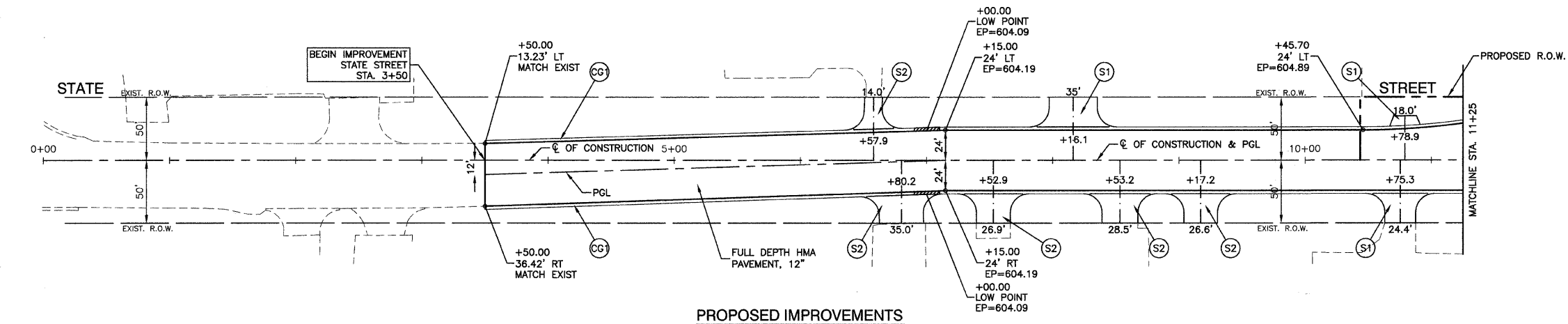


F.A.U. NO.	SECTION	COUNTY	TOTAL SHEETS	SHEET NO.
2906	02-00077-00-WR	COOK	073	014
STA. 3+50		TO STA. 11+25		
FED. ROAD DIST. NO. 1	ILLINOIS	FED. AID PROJECT	M-8003(596)	

CONTRACT #63061



EXISTING CONDITIONS

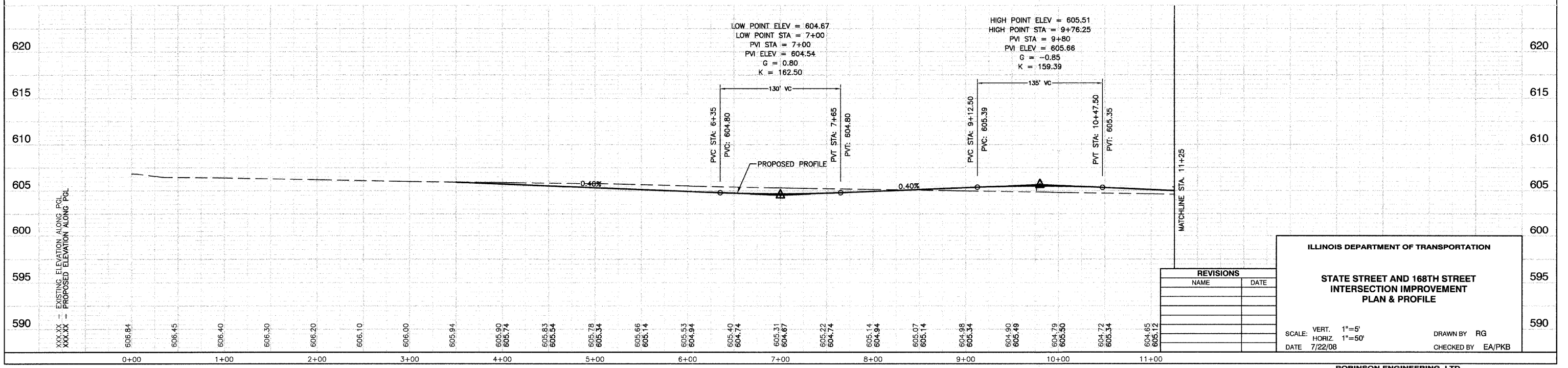


PROPOSED IMPROVEMENTS

- LEGEND**
- HMA PAVEMENT REMOVAL
 - DRIVEWAY PAVEMENT REMOVAL
 - COMB. CURB & GUTTER REMOVAL
 - SIDEWALK REMOVAL
 - CONTAMINATION SITE
 - CURB & GUTTER TYPE B-6.24
 - 10' TRANSITION FROM C & G TYPE B-6.12 TO B-6.24
 - HMA DRIVEWAY, 8" HMA BASE COURSE, 2" HMA SURFACE COURSE, MIX "C", N50
 - P.C.C DRIVEWAY PAVEMENT, 8"
 - CURB AND GUTTER FORMED BY HAND FOR PROPER DRAINAGE
 - TREE REMOVAL
 - TREE ROOT PRUNING

- NOTE:**
1. SEE PAVEMENT MARKING SHEETS FOR TAPERS AND STORAGE LENGTHS
 - * 2. REFER TO SPECIAL PROVISION DURING SOIL EXCAVATION AT CONTAMINATION SITES
 3. ALL STATIONS AND OFFSETS REFERENCE STATE STREET ϕ OF CONSTRUCTION
 4. THERE ARE EXISTING 12KV OVERHEAD FACILITIES AND APPROXIMATELY 3 POLES IN CONFLICT WITH THE SUBJECT IMPROVEMENT. THE CONTRACTORS SHOULD USE CAUTION IN OPERATING CRANES OR OTHER EQUIPMENT NEAR COMED OVERHEAD FACILITIES.

BENCH MARK: #38
 SQUARE CUT IN SOUTH EDGE OF CONC. BASE OF R.R. SIGNAL, THE WEST OF THE TWO. N.E. CORNER VINCENNES RD. AND TAFT DR.
 ELEVATION = 606.50



REVISIONS	
NAME	DATE

ILLINOIS DEPARTMENT OF TRANSPORTATION

**STATE STREET AND 168TH STREET
 INTERSECTION IMPROVEMENT
 PLAN & PROFILE**

SCALE: VERT. 1"=5'
 HORIZ. 1"=50'

DATE 7/22/08

DRAWN BY RG
 CHECKED BY EA/PKB