

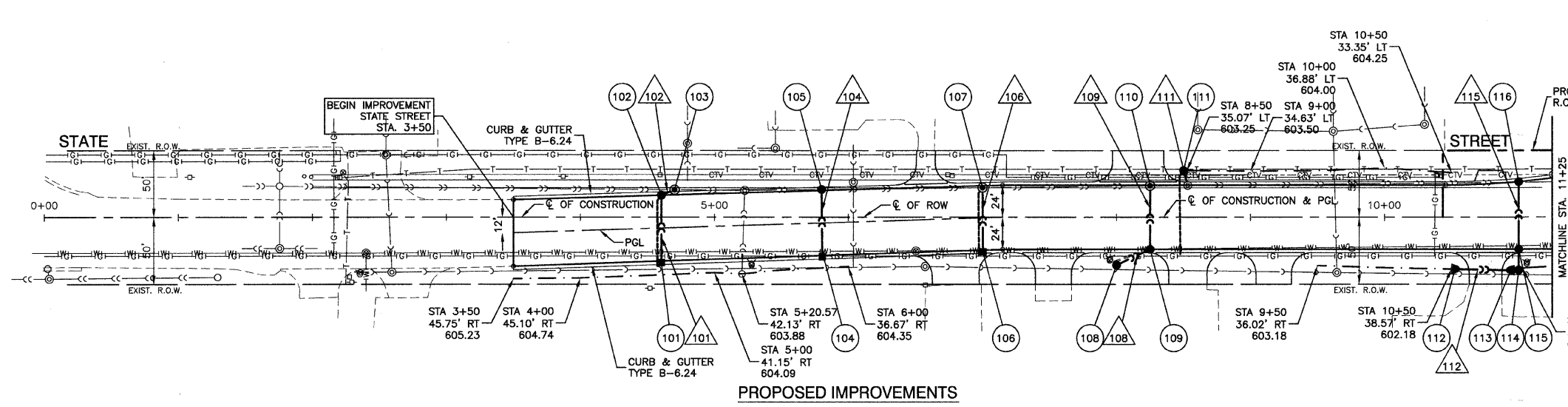
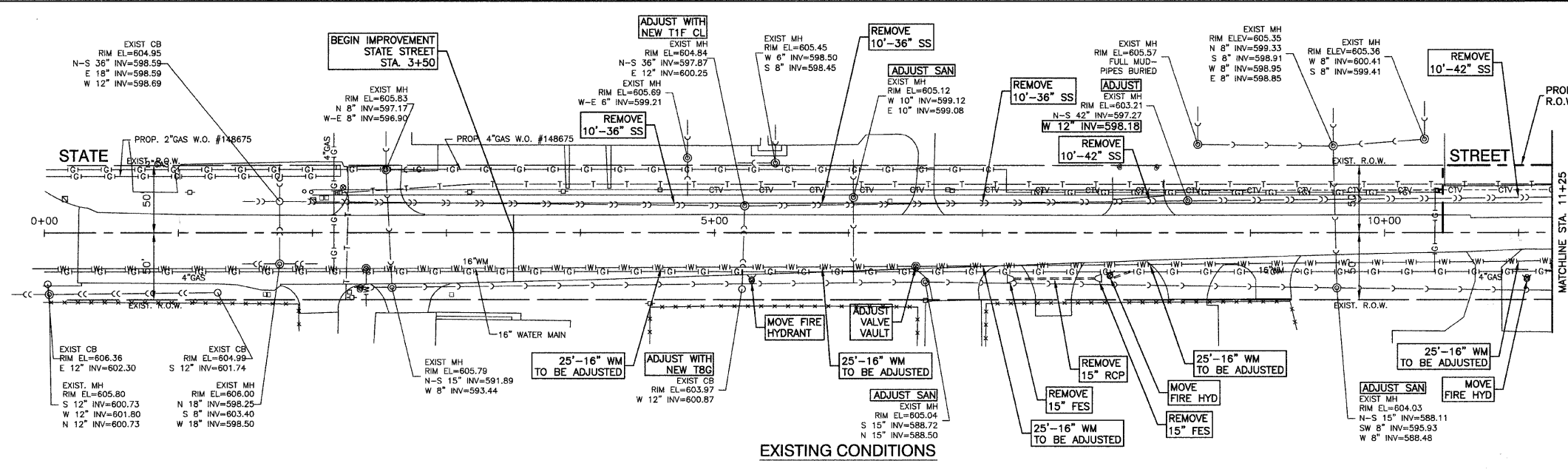
F.A.U. NO.	SECTION	COUNTY	TOTAL SHEETS	SHEET NO.
2908	02-00077-00-WR	COOK	073	017
STA. 3+50		TO STA. 11+25		
FED. ROAD DIST. NO. 1		FED. AID PROJECT M-8003(596)		

CONTRACT #63061



- 101 29' - 12" SST2 @ 1.29% (8.30) [19' WMR]
- 102 10' - 12" SST2 @ 0.50% (3.10)
- 104 33' - 12" SST2 @ 1.50% (10.62) [15' WMR]
- 106 32' - 12" SST2 @ 1.64% (6.69) [12' WMR]
- 108 23' - 12" SST2 @ 0.50% (5.07)
- 109 27' - 12" SST2 @ 0.50% (11.05) [16' WMR]
- 111 5' - 12" SST2 @ 2.00% (3.48)
- 112 37' - 12" ROCP CULVERT PIPE TYPE 1 @ 1.00% (4.88)
- 114 10' - 12" SST2 @ 0.50% (1.87)
- 115 33.5' - 12" SST2 @ 0.50% (32.87) [16' WMR]

- NOTES:**
- ALL RIM ELEVATIONS OF STRUCTURES IN THE PROPOSED CURB LINE ARE GIVEN TO THE EDGE OF PAVEMENT. ALL OTHER RIM ELEVATIONS ARE GIVEN TO THE CENTER OF STRUCTURES. ALL CALL-OUTS REFERENCE THE CENTERLINE OF CONSTRUCTION.
  - (XX.X) DENOTES CUBIC YARDS OF TRENCH BACKFILL.
  - [XX' WMR] DENOTES WATER MAIN REQUIREMENT STORM SEWER PIPE, AS DESCRIBED IN THE SPECIAL PROVISIONS.
  - THERE ARE EXISTING 12KV OVERHEAD FACILITIES AND APPROXIMATELY 3 POLES IN CONFLICT WITH THE SUBJECT IMPROVEMENT. THE CONTRACTORS SHOULD USE CAUTION IN OPERATING CRANES OR OTHER EQUIPMENT NEAR OVERHEAD FACILITIES.

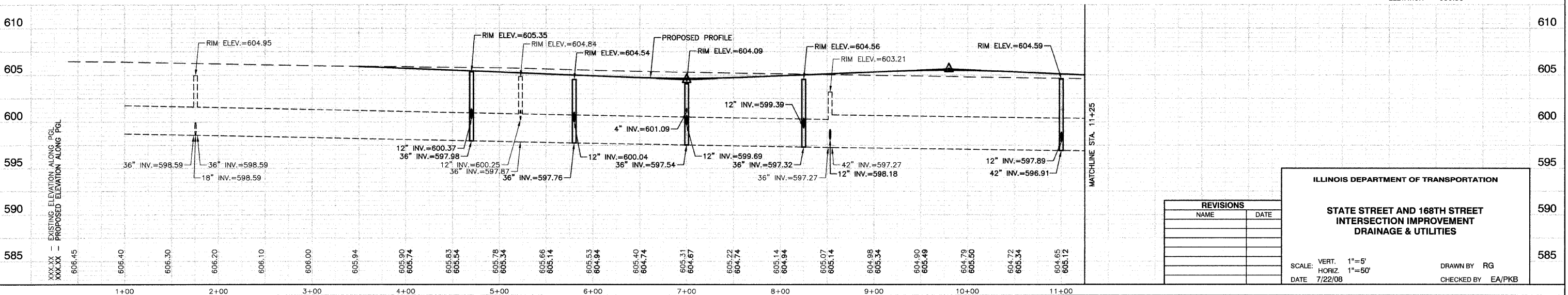


101	STA 4+60, 33.66' RT INLET TA, T24 F&G RIM ELEV = 605.01 W 12" INV = 601.14	109	STA 8+25, 24' RT CB TA, 4" DIA, T24 F&G RIM ELEV = 604.56 W 12" INV = 599.61 SE 12" INV = 599.71
102	STA 4+60, 16.49' LT CB TA, 4" DIA, T24 F&G RIM ELEV = 605.01 NW 12" INV = 600.42 E 4" INV = 602.01 SE 12" INV = 600.52	110	STA 8+25, 23.51' LT MH TA, 6" DIA, T24 F&G RIM ELEV = 604.56 N-S 36" INV = 597.32 E 12" INV = 599.39
103	STA 4+70.22, 20.56' LT MH TA, 5" DIA, TIF CL RIM ELEV = 605.35 N-S 36" INV = 597.98 SE 12" INV = 600.37	111	STA 8+50, 35.07' LT CB TC, T8G RIM ELEV = 603.25 E 4" INV = 601.66 E 12" INV = 598.28
104	STA 5+80, 29.60' RT INLET TA, T24 F&G RIM ELEV = 604.54 W 12" INV = 600.76	112	STA 10+53.15, 38.57' RT CONCRETE FES, 12" FL ELEV = 602.15
105	STA 5+80, 20.73' LT CB TA, 5" DIA, T24 F&G RIM ELEV = 604.54 N-S 36" INV = 597.76 E 12" INV = 600.04	113	STA 10+93.51, 39.54' RT CONCRETE FES, 12" FL ELEV = 601.74'
106	STA 7+00, 25.51' RT INLET TA, T24 F&G RIM ELEV = 604.09 W 12" INV = 600.41	114	STA 11+00, 39.40' RT CB TC T8G RIM ELEV = 601.68 W 12" INV = 598.18
107	STA 7+00, 22.09' LT MH TA, 8" DIA, T24 F&G RIM ELEV = 604.09 N-S 36" INV = 597.54 E 4" INV = 601.09 E 12" INV = 599.69	115	STA 11+00, 24' RT CB TA, 4" DIA, T24 F&G RIM ELEV = 604.64 W 12" INV = 598.03 E 12" INV = 598.13
108	STA 8+00, 35.61' RT CB TC, T8G RIM ELEV = 603.32 NW 12" INV = 599.82	116	STA 11+00, 26.46' LT CB TA, 5" DIA, T24 F&G RIM ELEV = 604.59 E 12" INV = 597.89 N-S 42" INV = 596.91

**LEGEND**

- ADJUST ADJUST STORM SEWER STRUCTURE FRAME AND LID
- ADJUST SAN ADJUST SANITARY SEWER STRUCTURE FRAME AND LID
- PPR POWER POLE TO BE RELOCATED BY OTHERS
- TPR TELEPHONE POLE TO BE RELOCATED BY OTHERS
- 4" PIPE UNDERDRAIN

**BENCH MARK: #38**  
 SQUARE CUT IN SOUTH EDGE OF CONC. BASE OF R.R. SIGNAL, THE WEST OF THE TWO. N.E. CORNER VINCENNES RD. AND TAFT DR. ELEVATION = 606.50



REVISIONS	
NAME	DATE

**ILLINOIS DEPARTMENT OF TRANSPORTATION**

**STATE STREET AND 168TH STREET INTERSECTION IMPROVEMENT DRAINAGE & UTILITIES**

SCALE: VERT. 1"=5'  
 HORIZ. 1"=50'  
 DATE 7/22/08

DRAWN BY RG  
 CHECKED BY EA/PKB