

F. A. U. NO.	SECTION	COUNTY	TOTAL SHEETS	SHEET NO.
2908	02-00077-00-WR	COOK	073	038
STA.		TO STA.		
FED. ROAD DIST. NO. 1	ILLINOIS	FED. AID PROJECT	M-8003(596)	

CONTRACT #63061

SCHEDULE OF QUANTITIES

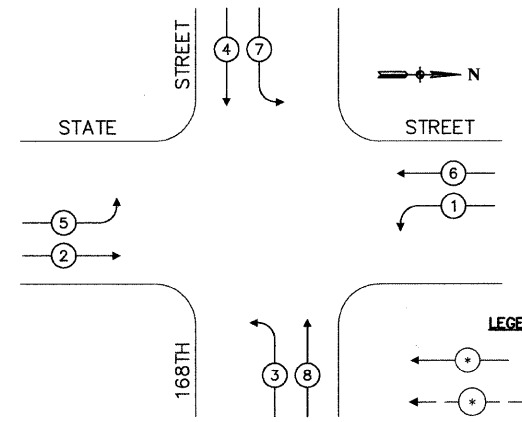
ITEM	UNIT	QUAN
SIGN PANEL, TYPE 1	SQ FT	25.5
CONDUIT IN TRENCH, 1 1/2" DIA., GALVANIZED STEEL	FOOT	100
CONDUIT IN TRENCH, 2" DIA., GALVANIZED STEEL	FOOT	444
CONDUIT IN TRENCH, 2 1/2" DIA., GALVANIZED STEEL	FOOT	138
CONDUIT IN TRENCH, 4" DIA., GALVANIZED STEEL	FOOT	24
CONDUIT PUSHED, 2" DIA., GALVANIZED STEEL	FOOT	253
CONDUIT PUSHED, 4" DIA., GALVANIZED STEEL	FOOT	285
HANDHOLE	EACH	7
HEAVY-DUTY HANDHOLE	EACH	4
DOUBLE HANDHOLE	EACH	1
TRENCH AND BACKFILL FOR ELECTRICAL WORK	FOOT	970
FULL-ACTUATED CONTROLLER AND TYPE V CABINET (SPECIAL)	EACH	1
TRANSCEIVER - FIBER OPTIC	EACH	1
ELECTRIC CABLE IN CONDUIT, SIGNAL NO. 14 3C	FOOT	400
ELECTRIC CABLE IN CONDUIT, SIGNAL NO. 14 5C	FOOT	1680
ELECTRIC CABLE IN CONDUIT, SIGNAL NO. 14 7C	FOOT	1730
ELECTRIC CABLE IN CONDUIT, LEAD-IN, NO. 14 1 PAIR	FOOT	3025
ELECTRIC CABLE IN CONDUIT, SERVICE, NO. 6 2C	FOOT	125
TRAFFIC SIGNAL POST, GALVANIZED STEEL 16 FT.	EACH	4
STEEL MAST ARM ASSEMBLY AND POLE, 34 FT.	EACH	1
STEEL MAST ARM ASSEMBLY AND POLE, 36 FT.	EACH	1
STEEL MAST ARM ASSEMBLY AND POLE, 44 FT.	EACH	1
STEEL MAST ARM ASSEMBLY AND POLE, 50 FT.	EACH	1
CONCRETE FOUNDATION, TYPE A	FOOT	16
CONCRETE FOUNDATION, TYPE C	FOOT	4
CONCRETE FOUNDATION, TYPE E 36-INCH DIAMETER	FOOT	50
SIGNAL HEAD, L.E.D., 1-FACE, 3-SECTION, MAST ARM MOUNTED	EACH	4
SIGNAL HEAD, L.E.D., 1-FACE, 5-SECTION, BRACKET MOUNTED	EACH	2
SIGNAL HEAD, L.E.D., 1-FACE, 5-SECTION, MAST ARM MOUNTED	EACH	4
SIGNAL HEAD, L.E.D., 2-FACE, 1-3 SECTION, 1-5 SECTION, BRACKET MOUNTED	EACH	2
TRAFFIC SIGNAL BACKPLATE, LOUVERED	EACH	8
INDUCTIVE LOOP DETECTOR	EACH	8
DETECTOR LOOP, TYPE 1	FOOT	940
LIGHT DETECTOR	EACH	2
LIGHT DETECTOR AMPLIFIER	EACH	1
SERVICE INSTALLATION, POLE MOUNTED	EACH	1
UNINTERRUPTIBLE POWER SUPPLY	EACH	1
ELECTRIC CABLE IN CONDUIT, NO. 20, 3C, TWISTED, SHIELDED	FOOT	370
ELECTRIC CABLE IN CONDUIT, GROUNDING, NO. 6, 1C	FOOT	725



CABLE PLAN LEGEND

EXISTING	PROPOSED	DESCRIPTION
		8" TRAFFIC SIGNAL SECTION
		12" TRAFFIC SIGNAL SECTION
		12" PEDESTRIAN SIGNAL SECTION
		12" PEDESTRIAN SIGNAL SECTION
		CONTROLLER CABINET
		SERVICE INSTALLATION
		UNINTERRUPTIBLE POWER SUPPLY
		TELEPHONE CONNECTION
		MAGNETIC DETECTOR
		EMERGENCY VEHICLE LIGHT DETECTOR
		CONFIRMATION BEACON
		PUSHBUTTON DETECTOR
		VEHICLE DETECTOR, INDUCTION LOOP
		2 DENOTES NUMBER OF CONDUCTORS. ALL CABLE NO. 14 EXCEPT AS INDICATED. ALL LOOP DETECTOR CABLE TO BE SHIELDED.
		SIGNAL FACE WITH BACKPLATE
		"P" INDICATES PROGRAMMED HEAD
		RAILROAD CONTROL CABINET
		ILLUMINATED SIGN, FIBER OPTIC "NO LEFT TURN"
		ILLUMINATED SIGN, FIBER OPTIC "NO RIGHT TURN"
		GROUND ROD AT CONTROLLER
		GROUND ROD AT POST
		GROUND ROD AT MAST ARM POLE
		GROUND ROD AT ELECTRIC SERVICE INSTALLATION
		GROUND ROD
		GROUND CABLE IN CONDUIT NO. 6 SOLID COPPER (GREEN)
		FIBER OPTIC CABLE IN CONDUIT NO. 62.5/125 2-MM12F & SM12F

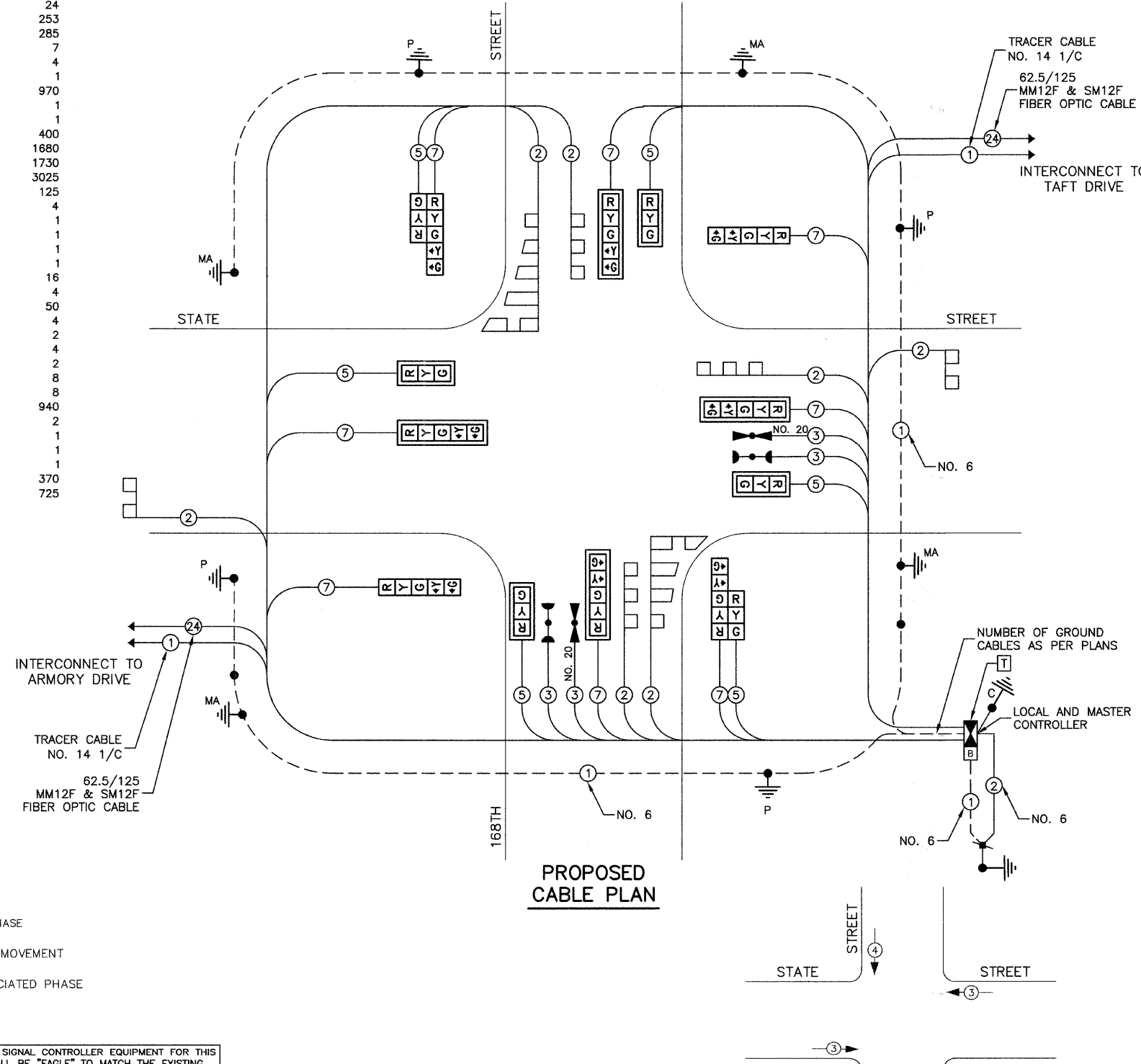
PROPOSED CONTROLLER SEQUENCE



INTERCONNECT TO ARMORY DRIVE

TRACER CABLE NO. 14 1/C
62.5/125 MM12F & SM12F FIBER OPTIC CABLE

PROPOSED CABLE PLAN



EMERGENCY VEHICLE PREEMPTION SEQUENCE

PROPOSED EMERGENCY VEHICLE PREEMPTORS	
EMERGENCY VEHICLE PREEMPTORS	3 4
MOVEMENT	—

I.D.O.T. TRAFFIC SIGNAL INSTALLATION ELECTRICAL SERVICE REQUIREMENTS					TOTAL WATTAGE
TYPE	NO. LAMPS	WATTAGE INCAND.	LED	% OPERATION	
SIGNAL (RED)	14	135	17	0.50	119
SIGNAL (YELLOW)	14	135	25	0.25	87.5
SIGNAL (GREEN)	14	135	15	0.25	52.5
ARROW	14	135	12	0.10	67
PED. SIGNAL	0	90	25	1.00	0
CONTROLLER	2	100	100	1.00	200
ILLUM. SIGN	0	84		0.05	0
FLASHER					0.50
ENERGY COSTS TO: VILLAGE OF SOUTH HOLLAND					TOTAL = 526
ENERGY SUPPLY CONTACT: KENNETH YOUNG					
PHONE: 708-235-2328					
COMPANY: COMMONWEALTH EDISON COMPANY					

FOUNDATION (DEPTH)	FT. (m)	CABLE SLACK	FT. (m)	VERTICLE	FT. (m)
TYPE A - POST	4 (1.2)	HANDHOLE	6.5 (2.0)	ALL FOUNDATIONS	3.5 (1.0)
D - CONTROLLER	4 (1.2)	DOUBLE HANDHOLE	13 (4.0)	MAST ARM (L) POLE	20'+1-2=
E - M. ARM POLE		SIGNAL POST	2 (1.0)	(6m+L-0.6m)=	
24" (600mm)	10 (3.0)	CONTROLLER CAB.	1 (0.5)	BRACKET MOUNTED	13 (4.0)
30" (750mm)	15 (4.6)	FIBER OPTIC	13 (4.0)	PED. PUSHBUTTON	4 (1.2)
		ELECTRIC SERVICE	1 (0.5)	ELECTRIC SERVICE	13.5 (4.1)
		GROUND CABLE	1 (0.5)	SERVICE TO GROUND	13.5 (4.1)
				POST MOUNTED	8 (1.8)

THE TRAFFIC SIGNAL CONTROLLER EQUIPMENT FOR THIS PROJECT SHALL BE "EAGLE" TO MATCH THE EXISTING ADJACENT SYSTEM.

LEGEND
 * DUAL ENTRY PHASE
 * PEDESTRIAN MOVEMENT
 * NUMBER REFERS TO ASSOCIATED PHASE

REVISIONS	
NAME	DATE

ILLINOIS DEPARTMENT OF TRANSPORTATION

STATE STREET AND 168TH STREET INTERSECTION IMPROVEMENT TRAFFIC SIGNAL CABLE PLAN

SCALE: VERT. NA
 HORIZ. NA
 DATE 7/22/08

DRAWN BY RG
 CHECKED BY MRS