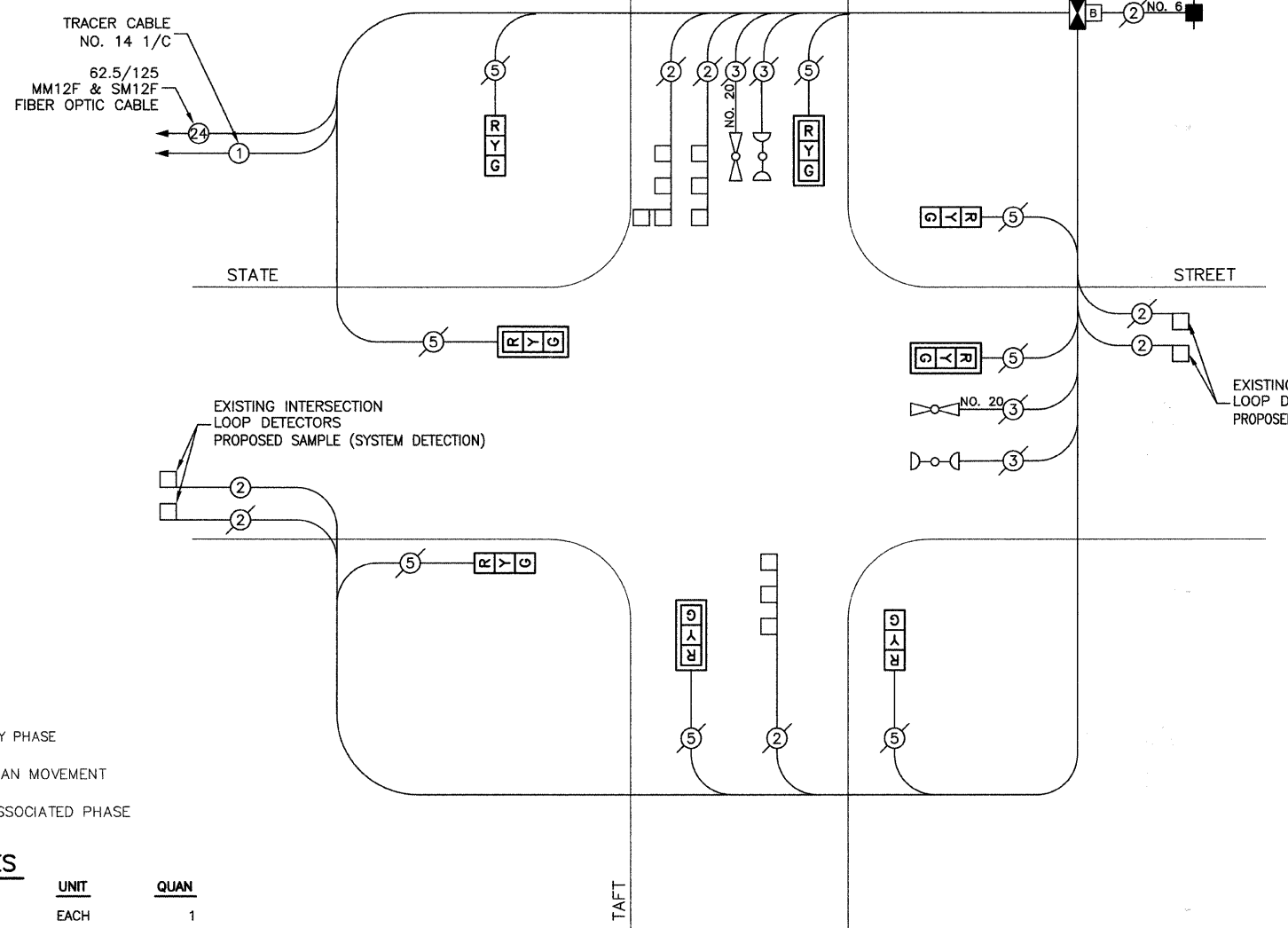


F. A. U. NO.	SECTION	COUNTY	TOTAL SHEETS	SHEET NO.
2806	02-00077-00-WR	COOK	073	040
STA.		TO STA.		
FED. ROAD DIST. NO. 1		ILLINOIS	FED. AID PROJECT	M-8003(596)

CONTRACT #63061



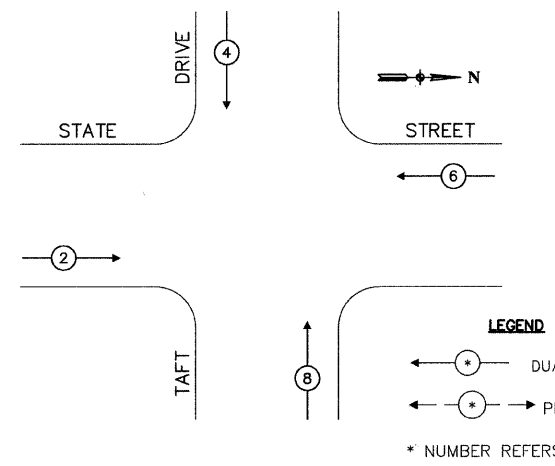
TRACER CABLE
NO. 14 1/C
62.5/125
MM12F & SM12F
FIBER OPTIC CABLE



CABLE PLAN LEGEND

EXISTING	PROPOSED	DESCRIPTION
		8" TRAFFIC SIGNAL SECTION
		12" TRAFFIC SIGNAL SECTION
		12" PEDESTRIAN SIGNAL SECTION
		12" PEDESTRIAN SIGNAL SECTION
		CONTROLLER CABINET
		SERVICE INSTALLATION
		UNINTERRUPTIBLE POWER SUPPLY
		TELEPHONE CONNECTION
		MAGNETIC DETECTOR
		EMERGENCY VEHICLE LIGHT DETECTOR
		CONFIRMATION BEACON
		PUSHBUTTON DETECTOR
		VEHICLE DETECTOR, INDUCTION LOOP
		2 DENOTES NUMBER OF CONDUCTORS.
		ALL CABLE NO. 14 EXCEPT AS INDICATED.
		ALL LOOP DETECTOR CABLE TO BE SHIELDED.
		SIGNAL FACE WITH BACKPLATE
		"P" INDICATES PROGRAMMED HEAD
		"E"
		RAILROAD CONTROL CABINET
		ILLUMINATED SIGN, FIBER OPTIC "NO LEFT TURN"
		ILLUMINATED SIGN, FIBER OPTIC "NO RIGHT TURN"
		GROUND ROD AT CONTROLLER
		GROUND ROD AT POST
		GROUND ROD AT MAST ARM POLE
		GROUND ROD AT ELECTRIC SERVICE INSTALLATION
		GROUND ROD
		GROUND CABLE IN CONDUIT NO. 6 SOLID COPPER (GREEN)
		FIBER OPTIC CABLE IN CONDUIT NO. 62.5/125 2-MM12F & SM12F

PROPOSED PHASE DESIGNATION DIAGRAM



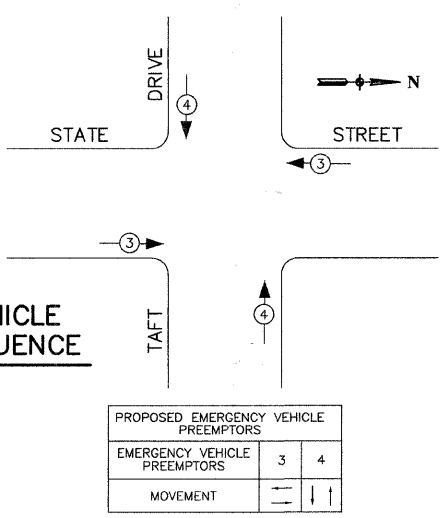
SCHEDULE OF QUANTITIES

ITEM	UNIT	QUAN
MAINTENANCE OF EXISTING TRAFFIC SIGNAL INSTALLATION	EACH	1
FULL-ACTUATED CONTROLLER AND TYPE IV CABINET (SPECIAL)	EACH	1
TRANSCEIVER - FIBER OPTIC	EACH	1
ELECTRIC CABLE IN TRENCH, LEAD-IN, NO. 14 1 PAIR	FOOT	741
SIGNAL HEAD, L.E.D., 1-FACE, 3-SECTION, MAST ARM MOUNTED	EACH	4
SIGNAL HEAD, L.E.D., 1-FACE, 3-SECTION, BRACKET MOUNTED	EACH	4
TRAFFIC SIGNAL BACKPLATE, LOUVERED	EACH	4
INDUCTIVE LOOP DETECTOR	EACH	7
RELOCATE EXISTING EMERGENCY VEHICLE PRIORITY SYSTEM, PHASING UNIT	EACH	1
UNINTERRUPTIBLE POWER SUPPLY	EACH	1
SERVICE INSTALLATION, POLE MOUNTED	EACH	1

THE TRAFFIC SIGNAL CONTROLLER EQUIPMENT FOR THIS PROJECT SHALL BE "EAGLE" TO MATCH THE EXISTING ADJACENT SYSTEM.

PROPOSED CABLE PLAN

EMERGENCY VEHICLE PREEMPTION SEQUENCE



PROPOSED EMERGENCY VEHICLE PREEMPTORS	MOVEMENT
EMERGENCY VEHICLE PREEMPTORS	3 4
MOVEMENT	← → ↑ ↓

I.D.O.T. TRAFFIC SIGNAL INSTALLATION ELECTRICAL SERVICE REQUIREMENTS					TOTAL WATTAGE
TYPE	NO. LAMPS	WATTAGE INCAND.	LED	%OPERATION	
SIGNAL (RED)	8	135	17	0.50	540
(YELLOW)	8	135	25	0.25	270
(GREEN)	8	135	15	0.25	270
ARROW	0	135	12	0.10	0
PED. SIGNAL	0	90	25	1.00	0
CONTROLLER	1	100	100	1.00	100
ILLUM. SIGN	0	84		0.05	0
FLASHER				0.50	
ENERGY COSTS TO: VILLAGE OF SOUTH HOLLAND					TOTAL = 1180

FOUNDATION (DEPTH)	FT. (m)	CABLE SLACK	FT. (m)	VERTICLE	FT. (m)
TYPE A - POST	4 (1.2)	HANDHOLE	6.5 (2.0)	ALL FOUNDATIONS	3.5 (1.0)
0 - CONTROLLER	4 (1.2)	DOUBLE HANDHOLE	13 (4.0)	MAST ARM (L) POLE	20'+L-2=
E - M. ARM POLE		SIGNAL POST	2 (1.0)	(6m+L-0.6m)=	
24" (600mm)	10 (3.0)	CONTROLLER CAB.	1 (0.5)	BRACKET MOUNTED	13 (4.0)
30" (750mm)	15 (4.6)	FIBER OPTIC	13 (4.0)	PED. PUSHBUTTON	4 (1.2)
		ELECTRIC SERVICE	1 (0.5)	ELECTRIC SERVICE	13.5 (4.1)
		FIBER OPTIC	13 (4.0)	SERVICE TO GROUND	13.5 (4.1)
		ELECTRIC SERVICE	1 (0.5)	POST MOUNTED	6 (1.8)
		GROUND CABLE	1 (0.5)		

REVISIONS	
NAME	DATE

ILLINOIS DEPARTMENT OF TRANSPORTATION
STATE STREET @ TAFT DRIVE (166TH STREET) INTERSECTION IMPROVEMENT TRAFFIC SIGNAL CABLE PLAN
 SCALE: VERT. NA
 HORIZ. NA
 DATE 7/22/08
 DRAWN BY RG
 CHECKED BY MRS