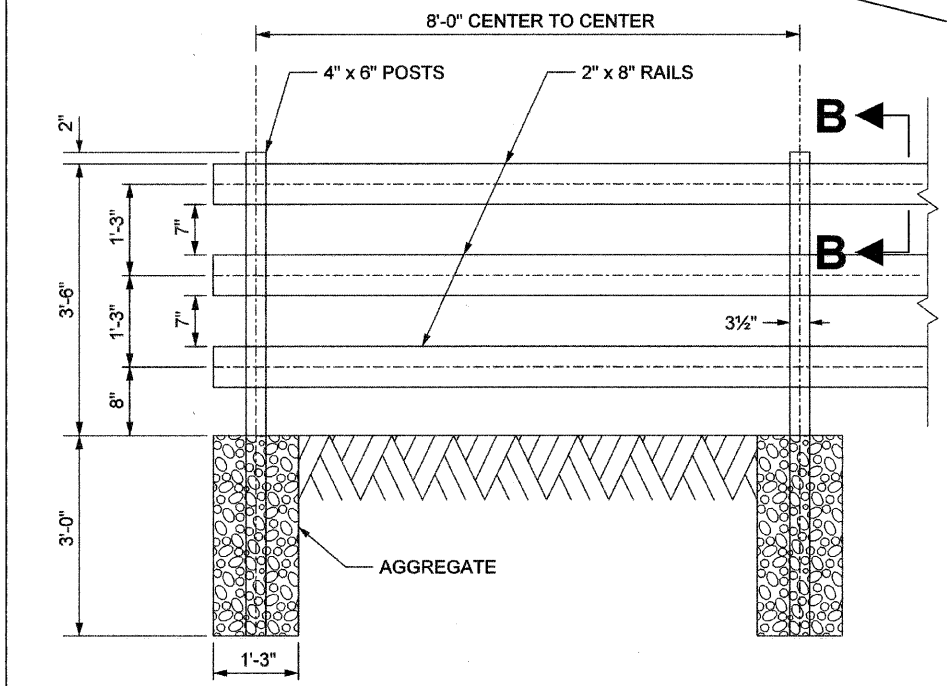
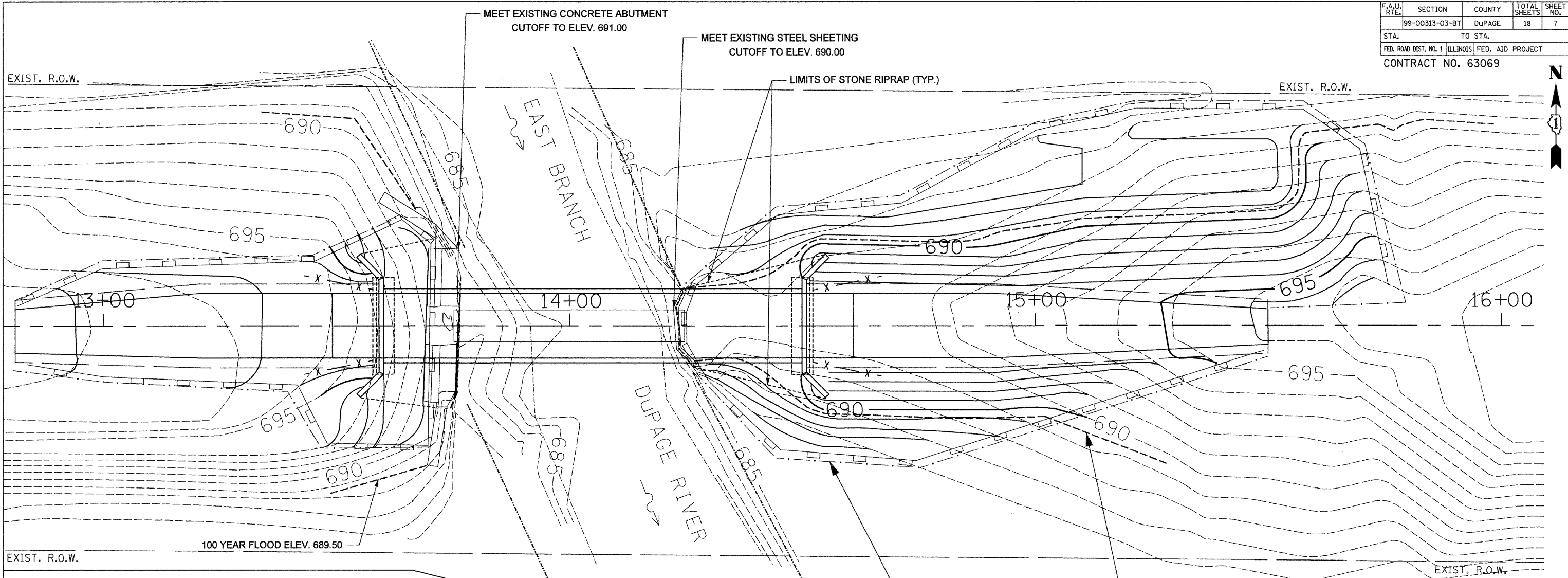
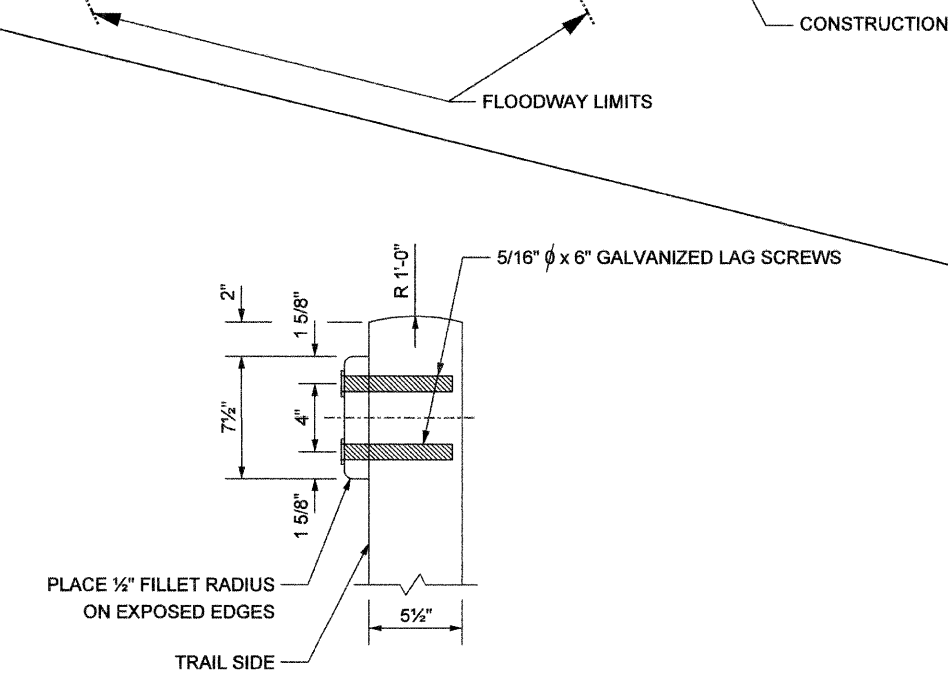


F.A.U. RTE.	SECTION	COUNTY	TOTAL SHEETS	SHEET NO.
	99-00313-03-BT	DUPAGE	18	7
STA.	TO STA.			
FED. ROAD DIST. NO. 1 ILLINOIS FED. AID PROJECT				
CONTRACT NO. 63069				



WOOD POST AND RAIL FENCE, 3.5 FEET - DETAIL



SECTION B-B

CR & A
CHRISTIAN-ROGE & ASSOCIATES, INC.
 ENGINEERS-PLANNERS-SURVEYORS
 211 WEST WACKER DRIVE
 CHICAGO, ILLINOIS 60606
 1-312-372-2023 FAX: 1-312-372-5274

REVISIONS	
NAME	DATE

ILLINOIS DEPARTMENT OF TRANSPORTATION
 SITE & GRADING PLAN
 C.H. 47 ILLINOIS PRAIRIE PATH
 OVER THE
 EAST BRANCH OF THE DUPAGE RIVER
 SCALE: 1" = 10'
 DATE: AUGUST 19, 2008
 DRAWN BY: A.C.S.
 CHECKED BY: S.J.P.