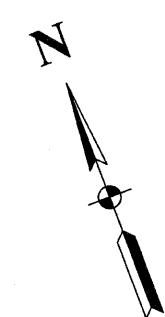
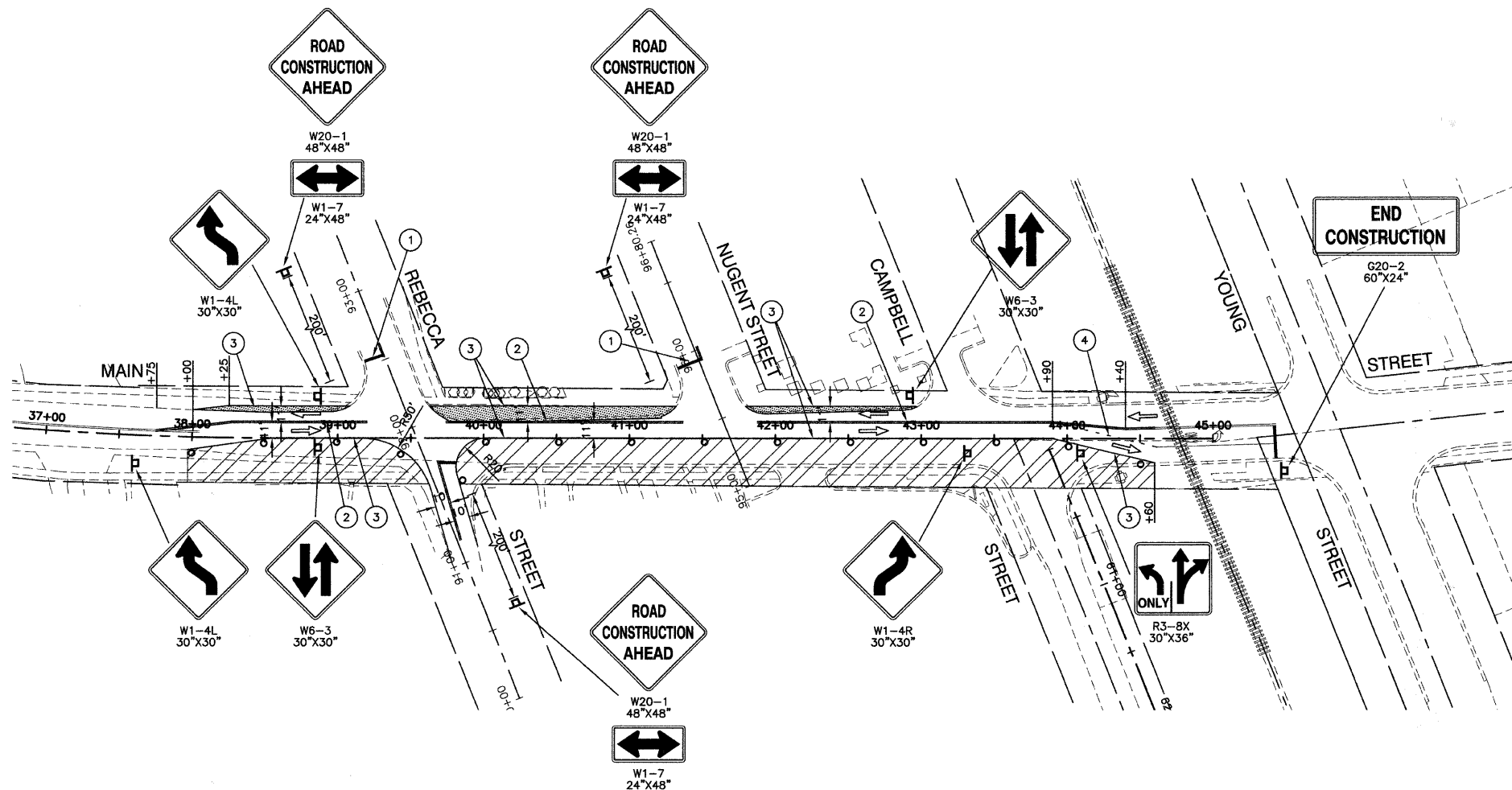


FAU RTE.	SECTION	COUNTY	TOTAL SHEETS	SHEET NO.
3603	03-00049-00-FP	COOK	045	008
STA.		TO STA.		
FED. ROAD DIST. NO. 1		ILLINOIS	FED. AID PROJECT M8003 (559)	

CONTRACT #63078



**CONSTRUCTION STAGING NOTES**

**STAGE 1**

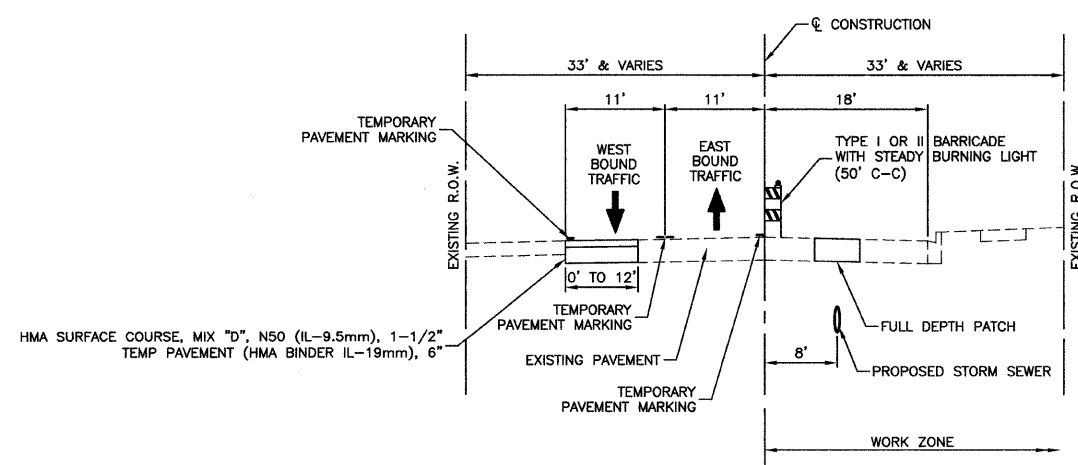
- RELOCATE LIGHTING AND ALL OTHER UTILITIES REQUIRED TO CONSTRUCT TEMPORARY PAVEMENT.
- REMOVE CURB AND GUTTER AND SIDEWALK AS NECESSARY TO CONSTRUCT TEMPORARY PAVEMENT.
- CONSTRUCT TEMPORARY PAVEMENT.
- MOVE TRAFFIC NORTH OF THE CENTER LINE AND STRIPE PAVEMENT.
- CONSTRUCT STORM SEWER AND APPURTENANCES, AND PATCH ROAD.
- REMOVE TEMPORARY STRIPING AND MOVE TRAFFIC BACK TO NORMAL CONDITIONS.

**STAGE 2**

COMPLETE THE REMAINDER OF THE PROJECT USING HIGHWAY STANDARDS 701311, 701326, 701501, AND 701701.

**LEGEND**

- ① 24" WHITE STOP BAR - TEMPORARY PAVEMENT MARKINGS
- ② 4" DOUBLE YELLOW CENTERLINE (11" C-C) - TEMPORARY PAVEMENT MARKINGS
- ③ 4" WHITE EDGE LINE - TEMPORARY PAVEMENT MARKINGS
- ④ 4" WHITE SKIP DASH (2' LINE, 6' SPACE) - TEMPORARY PAVEMENT MARKINGS
- WORK ZONE
- TEMPORARY PAVEMENT TO BE CONSTRUCTED (7.5")
- PAVEMENT CONSTRUCTION LIMITS
- TYPE I OR II BARRICADE OR DRUM WITH STEADY BURNING LIGHTS (50' C-C)
- SIGN



TYPICAL CROSS SECTION  
STAGE 1 - STA 38+00 TO STA 45+00

REVISIONS	
NAME	DATE

ILLINOIS DEPARTMENT OF TRANSPORTATION

**MAIN STREET IMPROVEMENTS  
NORTH MAIN STREET TO CAMPBELL STREET  
MAINTENANCE OF TRAFFIC**

SCALE: VERT. NA  
HORIZ. 1"=50'

DATE: 7-24-08

DRAWN BY: EC  
CHECKED BY: WPD