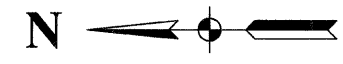


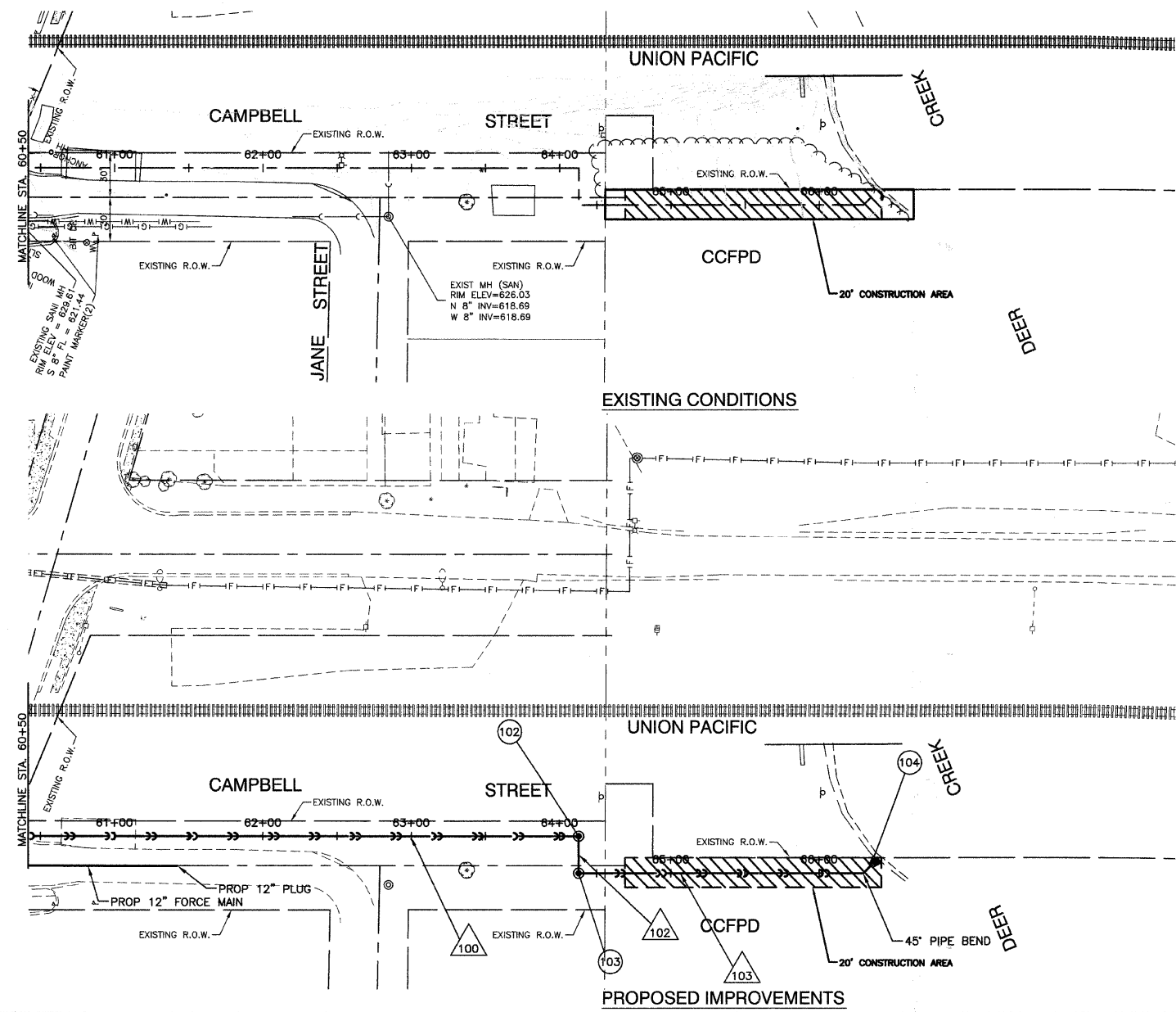
SECTION 3, TOWNSHIP 35, RANGE 14

FAU R/E.	SECTION	COUNTY	TOTAL SHEETS	SHEET NO.
3603	03-00049-00-FP	COOK	045	017
STA.		TO STA.		
FED. ROAD DIST. NO. 1		ILLINOIS	FED. AID PROJECT M8003 (559)	

CONTRACT #63078



- 102  
STA 64+21  
MH TA 5' DIA T1F CL  
RIM EL=625.00  
N 36" INV=613.11  
E 36" INV=613.11
- 103  
STA 64+61  
MH TA 5' DIA T1F CL  
RIM EL=625.00  
W 36" INV=613.05  
S 36" INV=613.05
- 104  
STA 66+25  
30" RCP FES W/GRATE  
N 36" INV=612.84



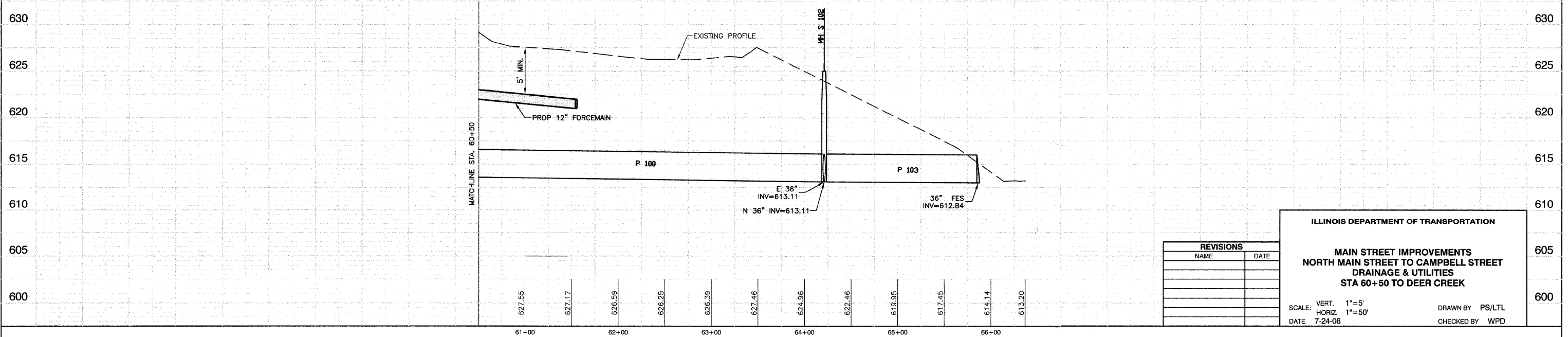
- 100 413'-36" SST3 @ 0.13% (95)
- 102 25'-36" SST2 @ 0.13% (0)
- 103 202'-36" SST2 @ 0.13% (0)

NOTES:

1. ALL OFFSETS TO CURBLINE STRUCTURES ARE GIVEN TO THE EDGE OF PAVEMENT. ALL OTHER OFFSETS ARE GIVEN TO THE CENTER OF THE STRUCTURE.
2. ALL RIM ELEVATIONS TO CURBLINE STRUCTURES ARE EDGE OF PAVEMENT ELEVATIONS.
3. (WMR) DENOTES WATER MAIN REQUIREMENTS.
4. (XX.X) DENOTES CUBIC YARDS TRENCH BACKFILL.
5. SEE LIGHTING PLANS FOR STREET LIGHT RELOCATIONS.

BENCH MARK: #96

N FLANGE OF HYD N SIDE GLENWOOD CHICAGO HEIGHTS RD BETWEEN GLENWOOD OAKS AND FOREST PRESERVE ELEVATION = 621.80



REVISIONS	
NAME	DATE

**ILLINOIS DEPARTMENT OF TRANSPORTATION**

**MAIN STREET IMPROVEMENTS  
NORTH MAIN STREET TO CAMPBELL STREET  
DRAINAGE & UTILITIES  
STA 60+50 TO DEER CREEK**

SCALE: VERT. 1"=5'  
HORIZ. 1"=50'  
DATE 7-24-08

DRAWN BY PS/LTL  
CHECKED BY WPD