

HORIZONTAL & VERTICAL CONTROL



Chain IL84 contains:
24 CUR 200 CUR 210 CUR 220 4070

Beginning chain IL84 description
Feature:

Point 24 N 1,866,836.4120 E 2,284,042.1130 Sta 128+29.0967
Course from 24 to PC 200 72° 05' 55.6500" Dist 3,706.2501'

Curve Data

Curve 200
Feature:
P.I. Station 167+95.4916 N 1,868,055.5893 E 2,287,816.4865
Delta = 10° 47' 18.2719" (LT)
Degree = 2° 04' 46.8731"
Tangent = 260.1448'
Length = 518.7516'
Radius = 2,755.0194'
External = 12.2549'
Long Chord = 517.9856'
Mid. Ord. = 12.2007'
P.C. Station 165+35.3468 N 1,867,975.6269 E 2,287,568.9358
P.T. Station 170+54.0983 N 1,868,180.4756 E 2,288,044.6942
C.C. N 1,870,597.2700 E 2,286,722.1071

Course from PT 200 to PC 210 61° 18' 37.3781" Dist 7,502.7941'

Curve Data

Curve 210
Feature:
P.I. Station 261+34.6741 N 1,872,539.7381 E 2,296,010.4765
Delta = 44° 52' 18.5688" (LT)
Degree = 1° 29' 57.9272"
Tangent = 1,577.7817'
Length = 2,992.6037'
Radius = 3,821.1854'
External = 312.9231'
Long Chord = 2,916.7093'
Mid. Ord. = 289.2370'
P.C. Station 245+56.8924 N 1,871,782.3010 E 2,294,626.3941
P.T. Station 275+49.4962 N 1,874,053.0259 E 2,296,456.9681
C.C. N 1,875,134.3716 E 2,292,791.9784

Course from PT 210 to PC 220 16° 26' 18.8093" Dist 5,634.0577'

Curve Data

Curve 220
Feature:
P.I. Station 334+90.9894 N 1,879,751.6532 E 2,298,138.3334
Delta = 6° 11' 01.8291" (LT)
Degree = 1° 00' 24.0877"
Tangent = 307.4355'
Length = 614.2740'
Radius = 5,691.4959'
External = 8.2973'
Long Chord = 613.9759'
Mid. Ord. = 8.2852'
P.C. Station 331+83.5539 N 1,879,456.7845 E 2,298,051.3331
P.T. Station 337+97.8279 N 1,880,054.1777 E 2,298,193.0644
C.C. N 1,881,067.4037 E 2,292,592.4842

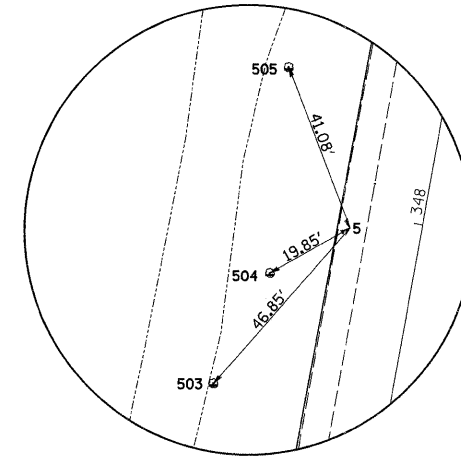
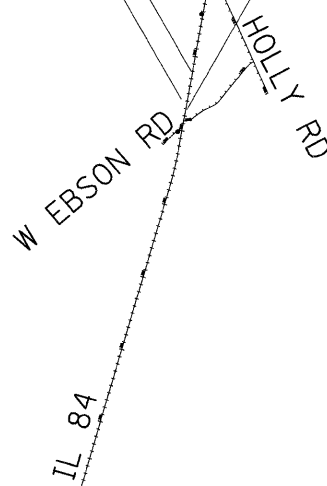
Course from PT 220 to 4070 10° 15' 16.9802" Dist 3,981.3878'

Point 4070 N 1,883,971.9670 E 2,298,901.8492 Sta 377+79.2157

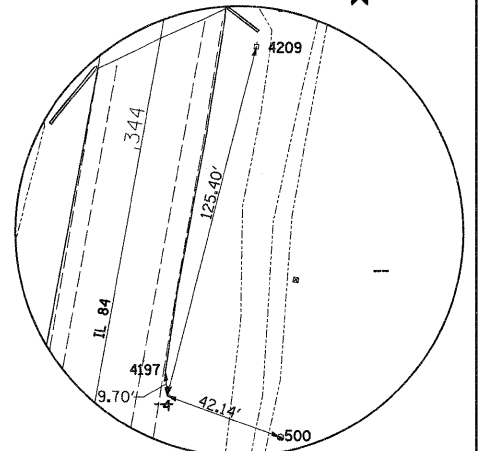
Ending chain IL84 description

CONTROL POINT NO. 5
BENCHMARK # 400

CONTROL POINT NO. 4



HORIZONTAL CONTROL POINT NO. 5



HORIZONTAL CONTROL POINT NO. 4

CURVE POINT NUMBERS					
CHAIN	CURVE	PI	CC	PC	PT
IL84	200	200	201	202	203
IL84	210	210	211	212	213
IL84	220	220	221	222	223

REFERENCE TIES				
POINT	CHAIN	STATION	OFFSET	DESCRIPTION
500	IL84	343+11.3666	64.9979' RT	SHINER, TREE
503	IL84	347+54.5172	41.7664' LT	SHINER, TREE
504	IL84	347+82.5023	33.3149' LT	SHINER, TREE
505	IL84	348+30.5836	37.5504' LT	SHINER, TREE
4197	IL84	343+26.36	22.05' RT	STEEL PLATE BEAM GUARDRAIL
4209	IL84	344+41.74	32.96' RT	POWER POLE

HORIZONTAL CONTROL POINTS							
POINT	NORTH	EAST	ELEVATION	CHAIN	STATION	OFFSET	DESCRIPTION
4	1880560.6570	2298308.2720	587.6700	IL84	343+16.7265	28.3305' RT	PIN TOPO SURVEY POINT
5	1881038.2350	2298353.2300	587.5580	IL84	347+94.6793	17.7942' LT	PIN TOPO SURVEY POINT

SURVEY WORK POINTS							
POINT	NORTH	EAST	ELEVATION	CHAIN	STATION	OFFSET	DESCRIPTION
6	1880940.1100	2298372.3160	587.7880	IL84	347+01.5195	28.2043' RT	NAIL TOPO SURVEY POINT
7	1800531.9110	2298261.2200	587.5790	IL84	342+80.0632	29.7641' LT	NAIL TOPO SURVEY POINT

BENCH MARKS							
POINT	NORTH	EAST	ELEVATION	CHAIN	STATION	OFFSET	DESCRIPTION
400	1880674.4682	2298219.9551	586.4771	IL84	344+12.9971	83.9658' LT	**