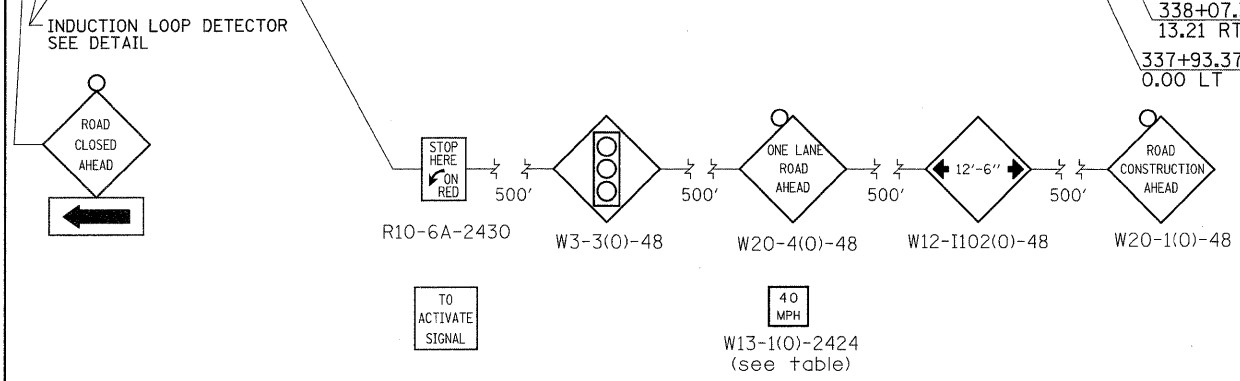
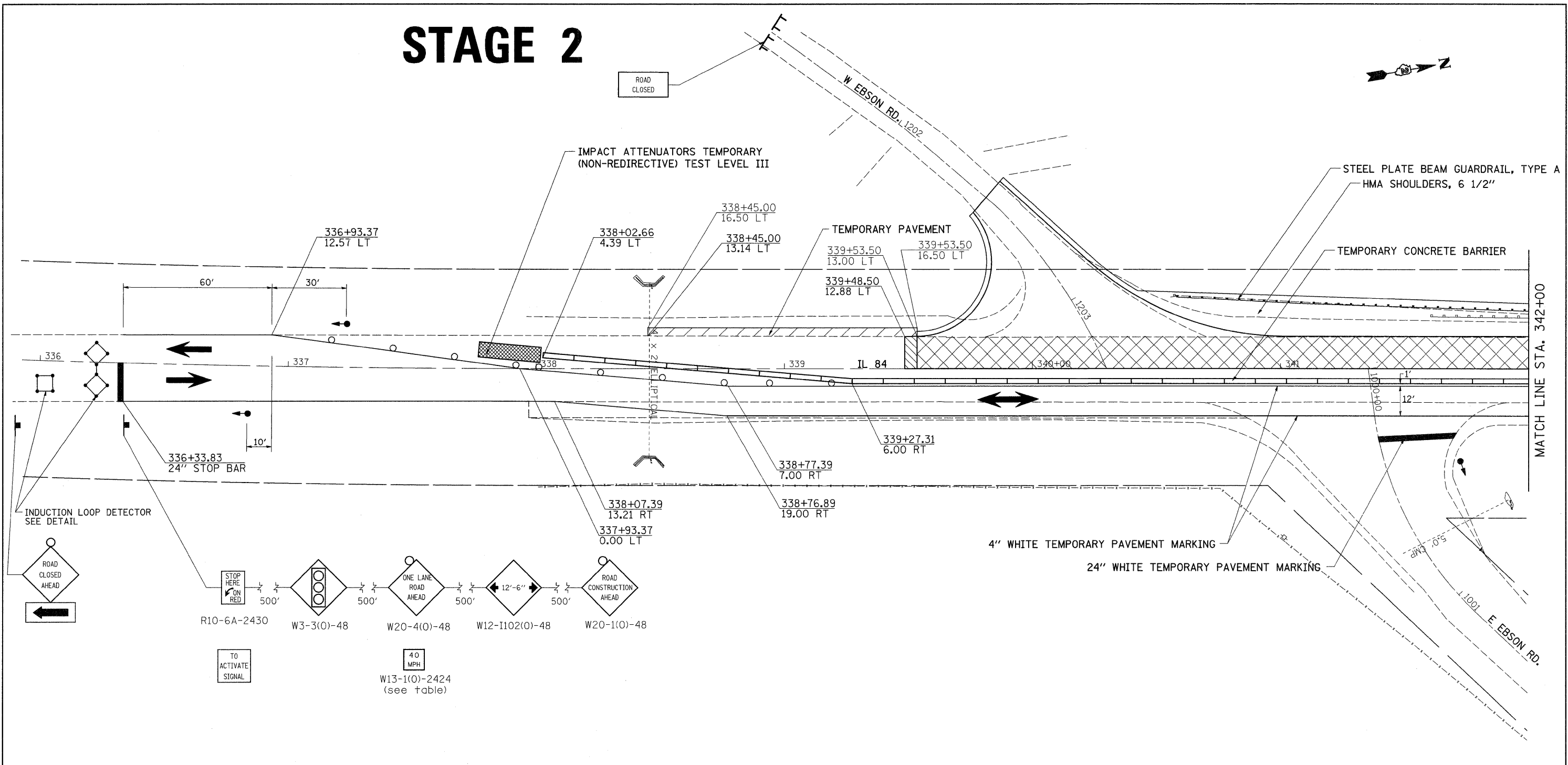
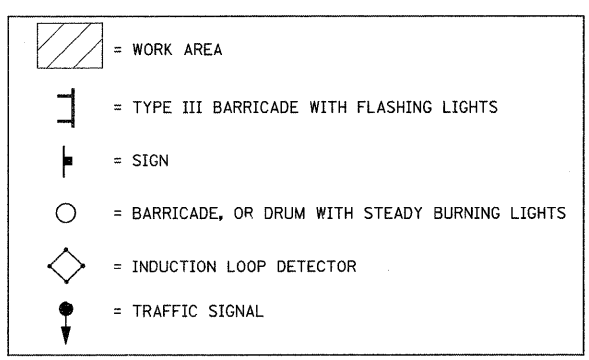


# STAGE 2



4" WHITE TEMPORARY PAVEMENT MARKING  
24" WHITE TEMPORARY PAVEMENT MARKING



## STAGE 2 NOTES

1. USE STANDARD 701321.
2. CLOSE W. EBSON RD.
3. CONSTRUCT BRIDGE LT TO STAGE CONSTRUCTION LINE.
4. CONSTRUCT LEVEL BINDER (MACHINE METHOD).
5. CONSTRUCT FULL WIDTH SHOULDERS AND GUARDRAIL FROM STA. 339+53.50 LT TO STA. 348+60.00 LT.
6. CONSTRUCT TEMPORARY RAMPS.
7. CONSTRUCT TEMPORARY PAVEMENT.
8. INSTALL GUARDRAIL.

- TEMPORARY RAMP  
STA 343+90 TO STA 343+95  
STA 345+58.61 TO STA 345+63.61  
STA 348+55 TO STA 348+60  
STA. 339+48.50 TO STA. 339+53.50
- TEMPORARY PAVEMENT  
STA 338+45 TO STA 339+53.50  
STA 348+60 TO STA 349+73.40
- LEVEL BINDER (MACHINE METHOD)  
STA 339+53.50 TO STA 343+95  
STA 345+58.61 TO 348+55

FILE NAME = c:\projects\p206006\d06006stg.dgn	USER NAME = hensonke	DESIGNED -	REVISED -	<b>STATE OF ILLINOIS DEPARTMENT OF TRANSPORTATION</b>	<b>STAGING PLANS</b>			F.A.P. RTE. 308	SECTION 109BR-5	COUNTY WHITESIDE	TOTAL SHEETS 83	SHEET NO. 24
PLOT SCALE = 20.0000 ft / IN.	CHECKED -	REVISED -	SCALE:					SHEET NO. OF SHEETS	STA. TO STA.	FED. ROAD DIST. NO.	ILLINOIS FED. AID PROJECT	
PLOT DATE = Thu Jul 31 07:41:11 2008	DATE -	REVISED -					CONTRACT NO. 64C25					