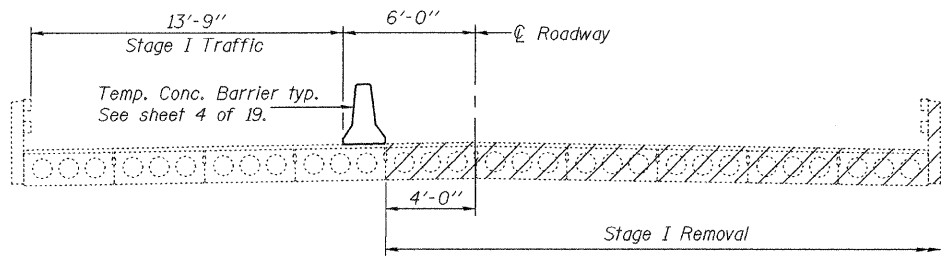


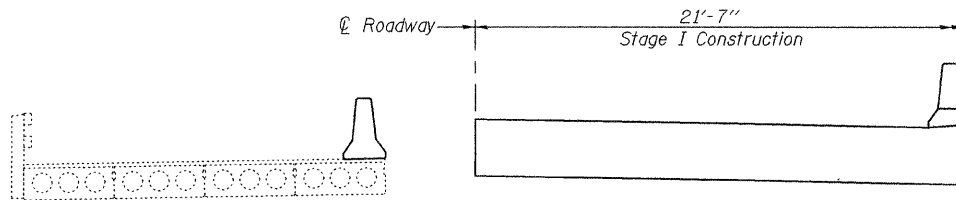
STATE OF ILLINOIS
DEPARTMENT OF TRANSPORTATION

ROUTE NO.	SECTION	COUNTY	TOTAL SHEETS	SHEET NO.	SHEET NO. 3
FAP 308	109BR-5	WHITESIDE	83	37	19 SHEETS
FED. ROAD DIST. NO. 7	ILLINOIS	FED. AID PROJECT			

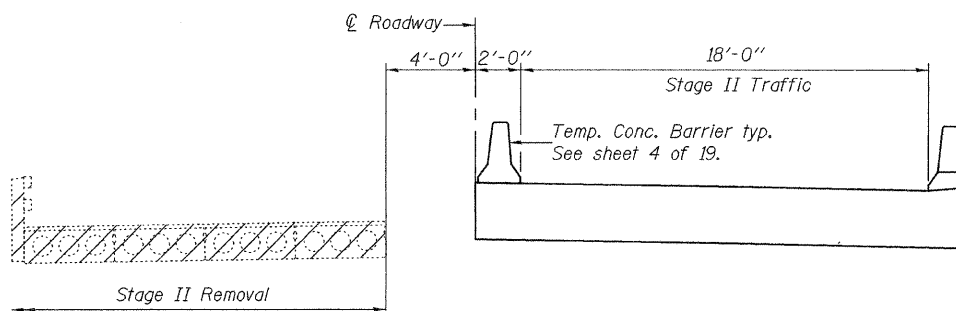
Contract #64C25



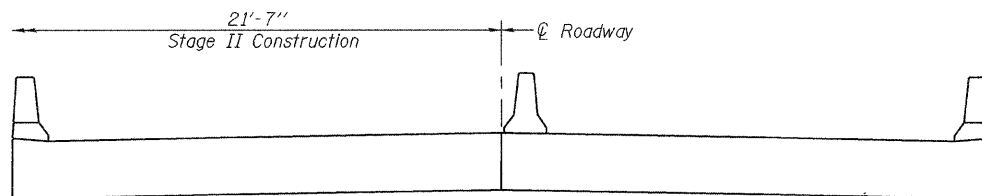
STAGE I REMOVAL



STAGE I CONSTRUCTION

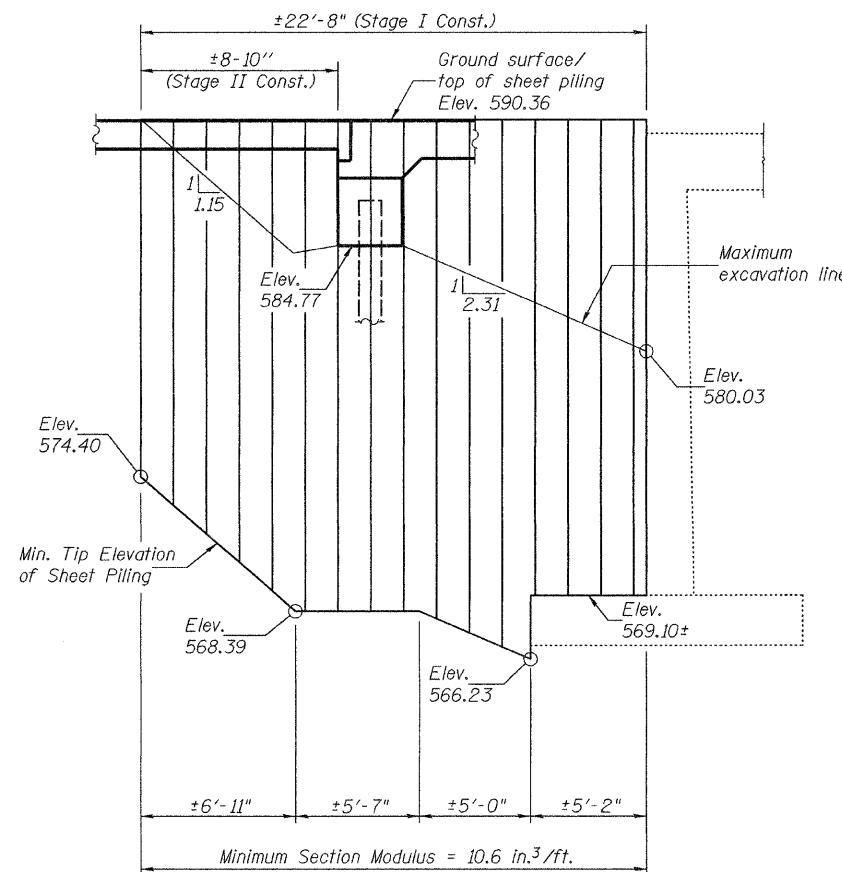


STAGE II REMOVAL



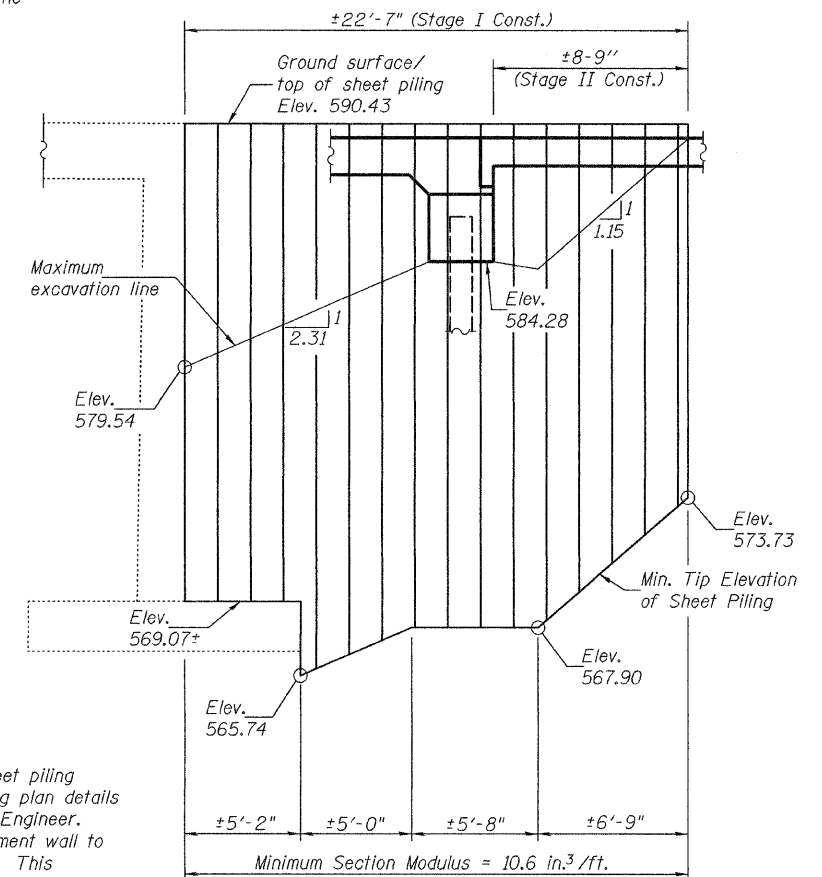
STAGE II CONSTRUCTION

Notes:
Hatched areas indicate Removal of Existing Structures.
For quantity of Temporary Concrete Barrier, see Roadway Plans.
All cross sections are looking South.



NORTH ABUTMENT SHEET PILING

If the Contractor chooses to alter the temporary cantilevered sheet piling design requirements shown on the plans, a design submittal including plan details and calculations will be required for review and acceptance by the Engineer.
The Contractor shall connect the first sheet to the existing abutment wall to ensure stability of sheets driven to the top of the existing footing. This connection shall be reviewed and accepted by the Engineer and included in the cost for Temporary Sheet Piling.



SOUTH ABUTMENT SHEET PILING

DESIGNED	Dewey H. Coultas
CHECKED	Stephen M. Ryan
DRAWN	BECKY M. LEACH
CHECKED	DHC/SMR

September 2, 2008
EXAMINED *Thomas J. Domagalicki*
PASSED *Ralph E. Anderson*

STAGE CONSTRUCTION DETAILS
F.A.P. ROUTE 308 - SECTION 109BR-5
WHITESIDE COUNTY
STATION 344+76.69
STRUCTURE NO. 098-0114