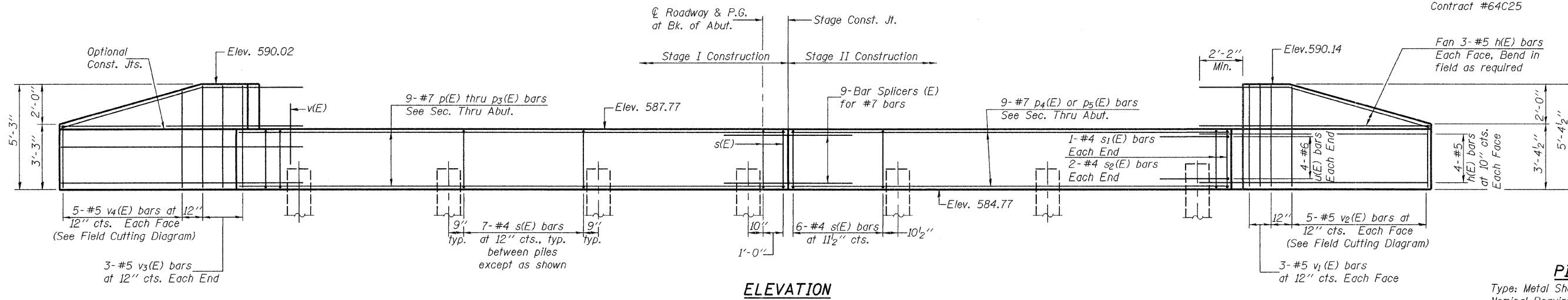


STATE OF ILLINOIS
DEPARTMENT OF TRANSPORTATION

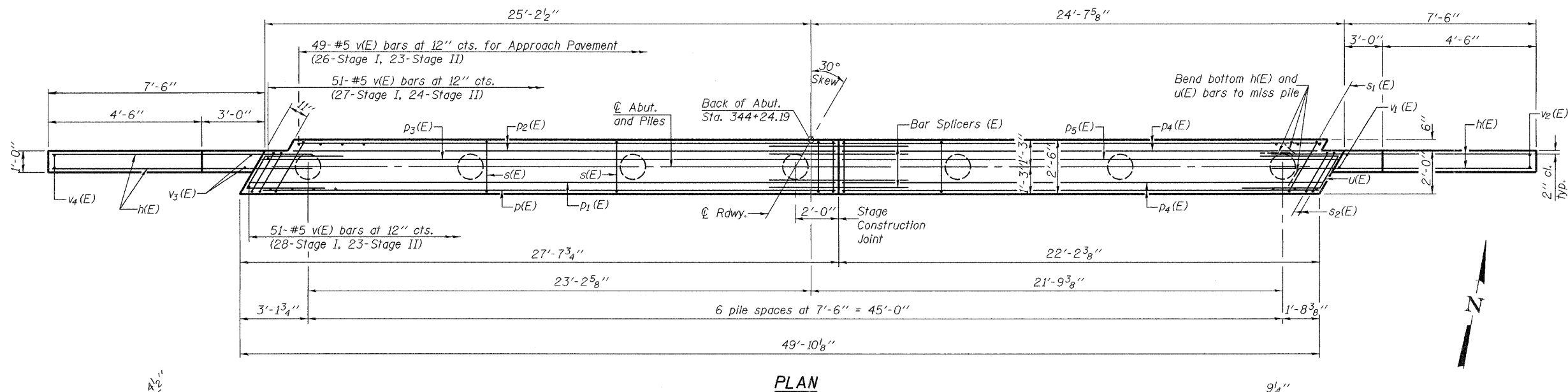
ROUTE NO.	SECTION	COUNTY	TOTAL SHEETS	SHEET NO.	SHEET NO. 11 19 SHEETS
FAP 308	109BR-5	WHITESIDE	83	45	
FED. ROAD DIST. NO. 7		ILLINOIS		FED. AID PROJECT-	

Contract #64C25



PILE DATA

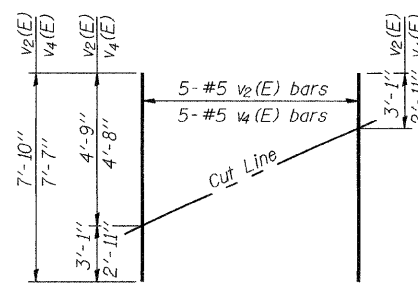
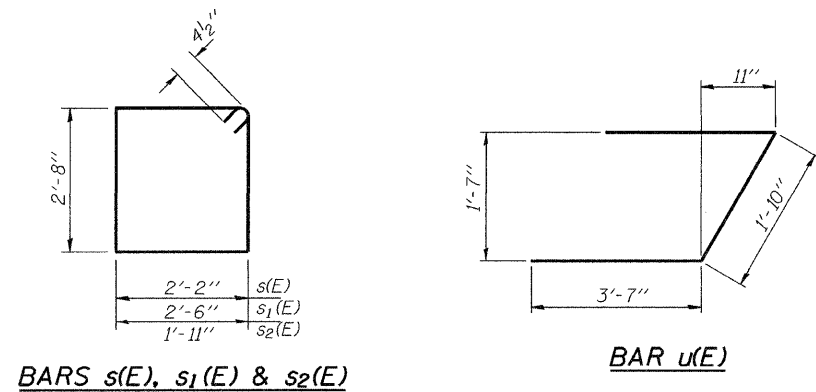
Type: Metal Shell 14" x 0.312"
Nominal Required Bearing: 270 kips
Factored Resistance Available: 135 kips
Est. Length: 48 ft.
No. Production Piles: 7
No. Test Piles: 0



BILL OF MATERIAL

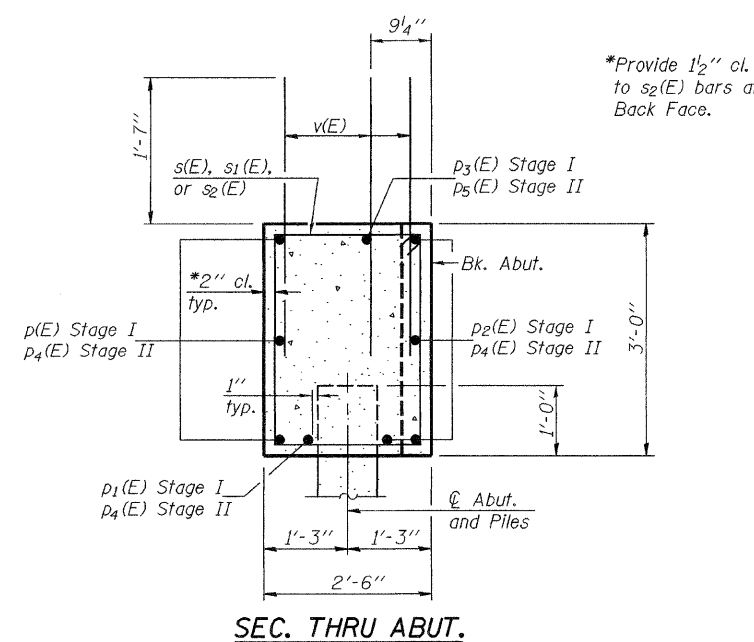
Bar	No.	Size	Length	Shape
h(E)	28	#5	10'-0"	—
p(E)	3	#7	27'-2"	—
p1(E)	1	#7	26'-11"	—
p2(E)	4	#7	24'-11"	—
p3(E)	1	#7	26'-4"	—
p4(E)	8	#7	22'-0"	—
p5(E)	1	#7	22'-9"	—
s(E)	43	#4	10'-5"	□
s1(E)	2	#4	11'-1"	□
s2(E)	4	#4	9'-11"	□
u(E)	8	#6	9'-0"	└
v(E)	151	#5	3'-2"	—
v1(E)	6	#5	4'-11"	—
v2(E)	5	#5	7'-10"	—
v3(E)	6	#5	4'-10"	—
v4(E)	5	#5	7'-7"	—
Structure Excavation	Cu. Yd.	61		
Concrete Structures	Cu. Yd.	16.4		
Reinforcement Bars, Epoxy Coated	Pound	2,270		
Furnishing Metal Shell Piles 14"x0.312"	Foot	336		
Driving Piles	Foot	336		

For details of Bar Splicers, see sheet 16 of 19.
For details of piles, see sheet 15 of 19.



FIELD CUTTING DIAGRAM

Order v2(E) and v4(E) full length.
Cut as shown and use remainder of bars in opposite face.



*Provide 1/2" cl. to s2(E) bars at Back Face.

NORTH ABUTMENT
F.A.P. ROUTE 308 - SECTION 109BR-5
WHITESIDE COUNTY
STATION 344+76.69
STRUCTURE NO. 098-0114

DESIGNED	Dewey H. Coultas
CHECKED	Stephen M. Ryan
DRAWN	BECKY M. LEACH
CHECKED	DHC/SMR

September 2, 2008
EXAMINED *Thomas J. Domagala*
ENGINEER OF BRIDGE DESIGN
PASSED *Ralph E. Anderson*
ENGINEER OF BRIDGES AND STRUCTURES