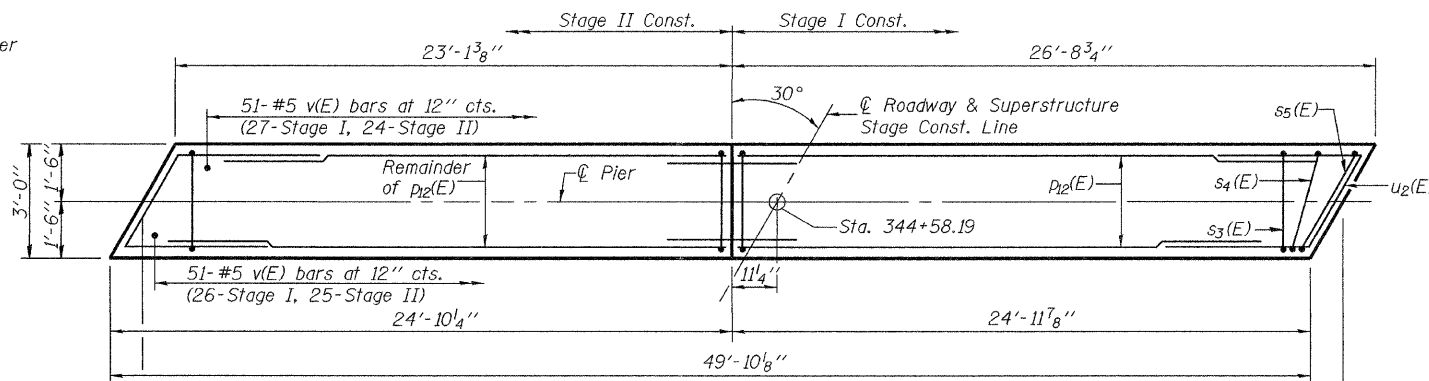


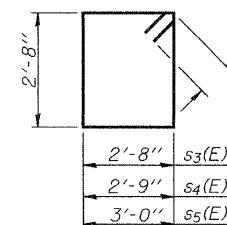
STATE OF ILLINOIS
DEPARTMENT OF TRANSPORTATION

ROUTE NO.	SECTION	COUNTY	TOTAL SHEETS	SHEET NO.	SHEET NO. 13 19 SHEETS
FAP 308	109BR-5	WHITESIDE	83	47	
FED. ROAD DIST. NO. 7	ILLINOIS	FED. AID PROJECT	Contract #64C25		

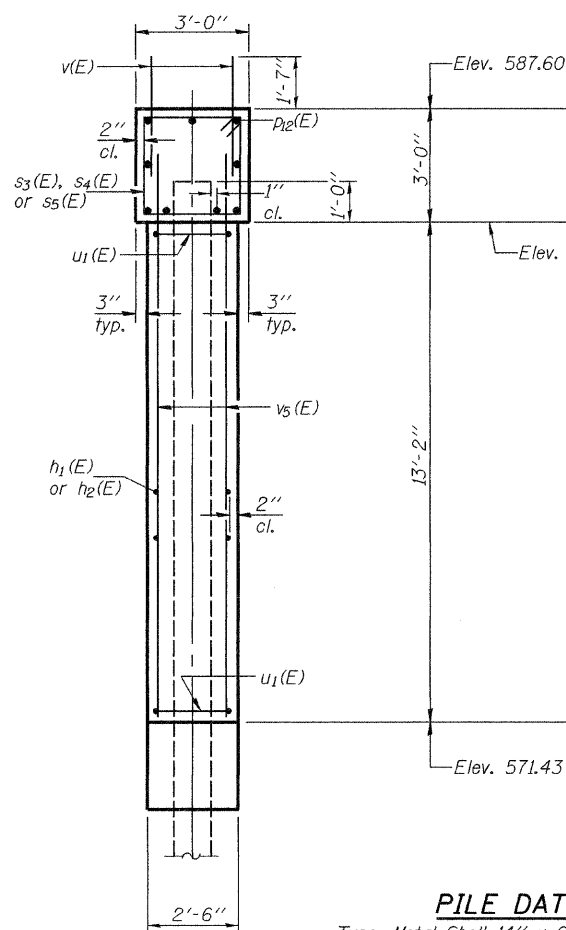
Note:
Pier piles shall be driven to a tip elevation of at least 542.5 regardless of the attainment of Nominal Required Bearing.
For details of piles, see sheet 15 of 19.
For Bar Splicer Assembly details, see sheet 16 of 19.
If a portion of the pier wall or concrete encasement is under water, reinforcement may be placed underwater into forms. Concrete shall be tremied according to Article 503.08 of the Standard Specifications to an elevation of 1'-0" above the water line at the time of construction.



TOP PLAN



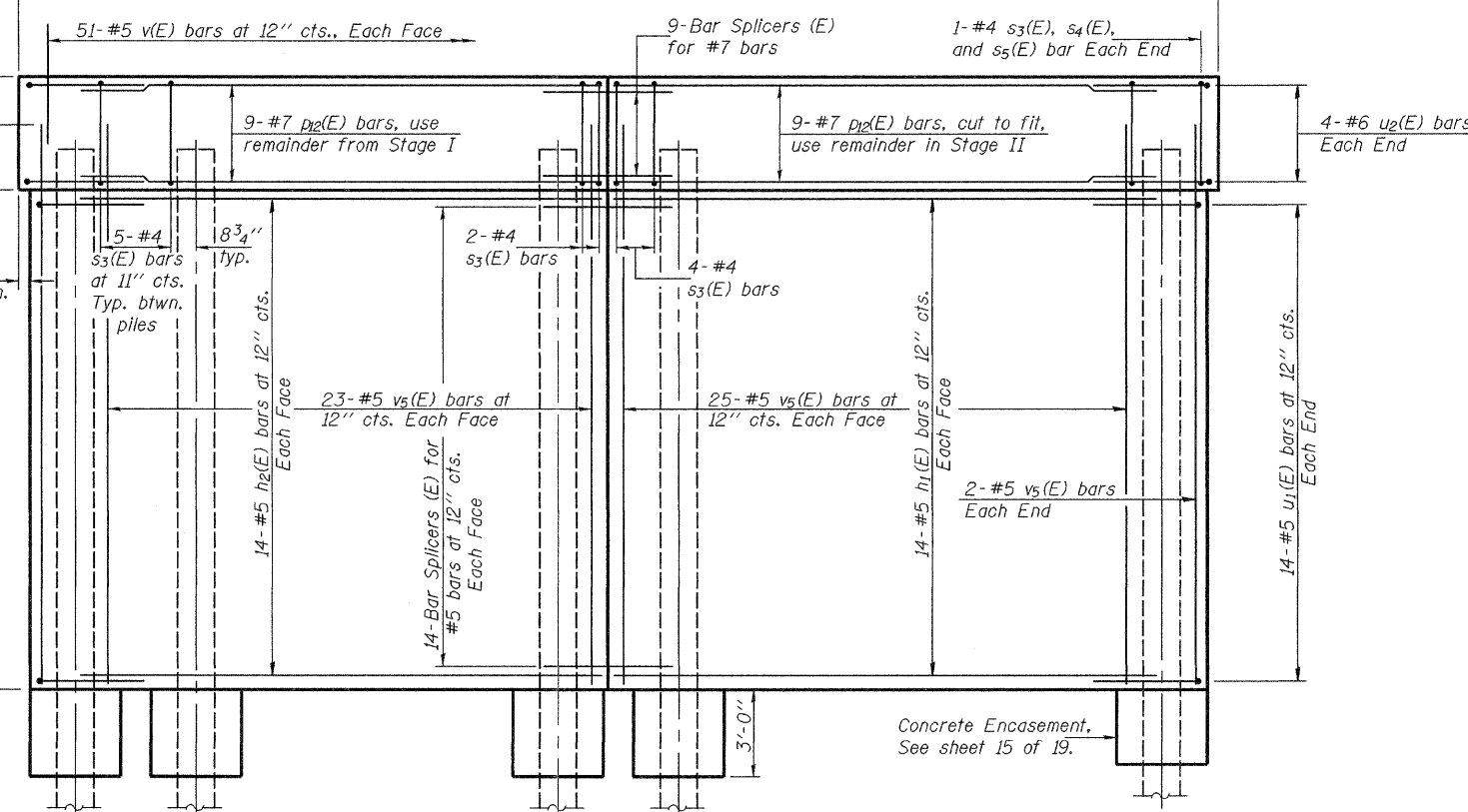
BAR s3(E), s4(E), and s5(E)



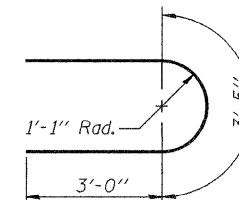
END VIEW

PILE DATA

Type: Metal Shell 14" x 0.312"
Nominal Required Bearing: 420 kips
Factored Resistance Available: 200 kips
Est. Length: 67 ft.
No. Production Piles: 9
No. Test Piles: 1



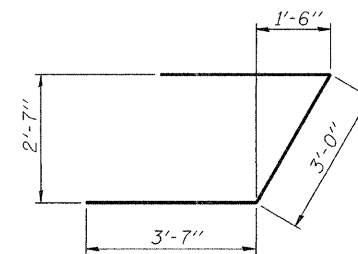
ELEVATION
(Looking South)



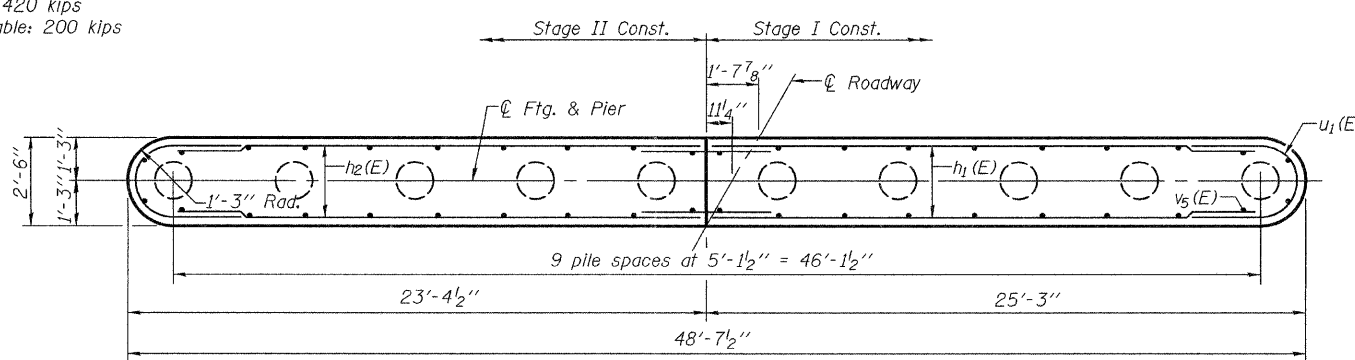
BARS u1(E)

BILL OF MATERIAL

Bar	No.	Size	Length	Shape
h1(E)	28	#5	23'-10"	—
h2(E)	28	#5	22'-0"	—
p2(E)	9	#7	49'-1"	—
s3(E)	48	#4	11'-5"	□
s4(E)	2	#4	11'-7"	□
s5(E)	2	#4	12'-1"	□
u1(E)	28	#5	9'-5"	U
u2(E)	8	#6	10'-2"	U
v(E)	102	#5	3'-2"	—
v5(E)	100	#5	15'-0"	—
Structure Excavation		Cu. Yd.	13	
Concrete Structures		Cu. Yd.	75.2	
Reinforcement Bars, Epoxy Coated		Pound	4,940	
Furnishing Metal Shell Piles 14"x0.312"		Foot	603	
Driving Piles		Foot	603	
Test Pile Metal Shells		Each	1	
Concrete Encasement		Cu. Yd.	5.5	
Underwater Structure Excavation Protection -Location 1		Each	1	



BAR u2(E)



FOOTING PLAN

DESIGNED	Dewey H. Coultas
CHECKED	Stephen M. Ryan
DRAWN	BECKY M. LEACH
CHECKED	DHC/SMR

September 2, 2008
EXAMINED *Thomas J. Domagala*
PASSED *Ralph E. Carls*
ENGINEER OF BRIDGES AND STRUCTURES

PIER 1
F.A.P. ROUTE 308 - SECTION 109BR-5
WHITESIDE COUNTY
STATION 344+76.69
STRUCTURE NO. 098-0114