

FAS RTE	SECTION	COUNTY	TOTAL SHEETS	SHEET NO.
338	34BR	IROQUOIS	49	1

STATE OF ILLINOIS
DEPARTMENT OF TRANSPORTATION
DIVISION OF HIGHWAYS

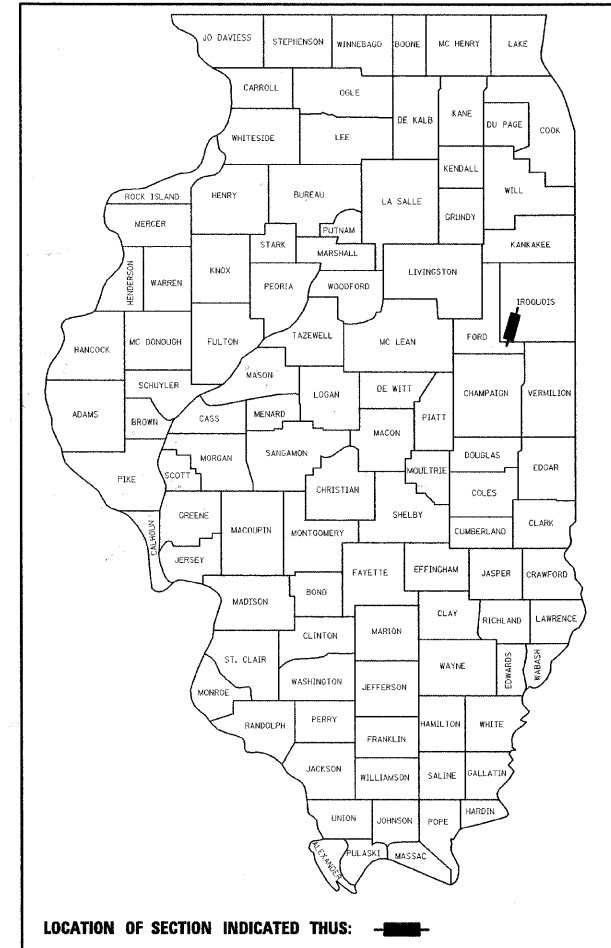
P-93-055-00
D-93-011-06

PROPOSED
HIGHWAY PLANS

FAS ROUTE 338 (US 45)
SECTION 34BR
PROJECT ACRS-ACBRS-0338(106)
IROQUOIS COUNTY

C - 93 - 012 - 06

US ROUTE 45 OVER SPRING CREEK
STRUCTURE REPLACEMENT



LOCATION OF SECTION INDICATED THUS: [Black Rectangle]

FUNCTIONAL CLASSIFICATION: MAJOR COLLECTOR (NON URBAN)
DESIGN SPEED: 55 mph
POSTED SPEED: 55 mph
ADT: 2500 (2007)
PV: 83.3%
SU: 10.7%
MU: 6.0%

STATE OF ILLINOIS
DEPARTMENT OF TRANSPORTATION
DIVISION OF HIGHWAYS

SUBMITTED _____ 20 _____

George Ryan
DEPUTY DIRECTOR OF HIGHWAYS, REGION ENGINEER

October 3, 2008

Eric E. Haral
ENGINEER OF DESIGN AND ENVIRONMENT

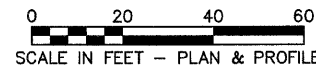
October 3, 2008

Christie M. Reed
DIRECTOR OF HIGHWAYS, CHIEF ENGINEER

DESIGN DESIGNATION
N.A.

INDEX OF SHEETS

SHEET NO.	DESCRIPTION
ROADWAY PLANS	
1.	COVER SHEET
2.	GENERAL NOTES, STANDARDS, AND COMMITMENTS
3.-4.	SUMMARY OF QUANTITIES
5.-6.	TYPICAL SECTIONS
7.-8.	SCHEDULES OF QUANTITIES
9.	STAGE I CONSTRUCTION
10.	STAGE II CONSTRUCTION
11.	STAGE CONSTRUCTION DETAILS
12.-17.	FAS RTE 338 (US 45) PLAN AND PROFILE
18.-19.	EROSION CONTROL AND DRAINAGE PLAN
20.-22.	MISCELLANEOUS DETAILS
23.	FIELD TILE DETAILS
STRUCTURE PLANS	
24.	GENERAL PLAN
25.	GENERAL DATA
26.	STAGE CONSTRUCTION DETAILS
27.	TEMPORARY CONCRETE BARRIER
28.	TOP OF SLAB ELEVATIONS
29.	SUPERSTRUCTURE
30.-31.	SUPERSTRUCTURE DETAILS
32.	ABUTMENTS
33.	PIERS
34.	METAL SHELL PILE DETAILS
35.	BAR SPLICER ASSEMBLY DETAILS
36.	SOIL BORINGS
EXISTING STRUCTURE PLANS	
37.-42.	EXISTING STRUCTURE PLANS
CROSS SECTIONS	
43.-49.	FAS 338 (US 45) CROSS SECTIONS



FULL SIZE PLANS HAVE BEEN PREPARED USING STANDARD ENGINEERING SCALES. REDUCED SIZED PLANS WILL NOT CONFORM TO STANDARD SCALES. IN MAKING MEASUREMENTS ON REDUCED PLANS, THE ABOVE SCALES MAY BE USED.

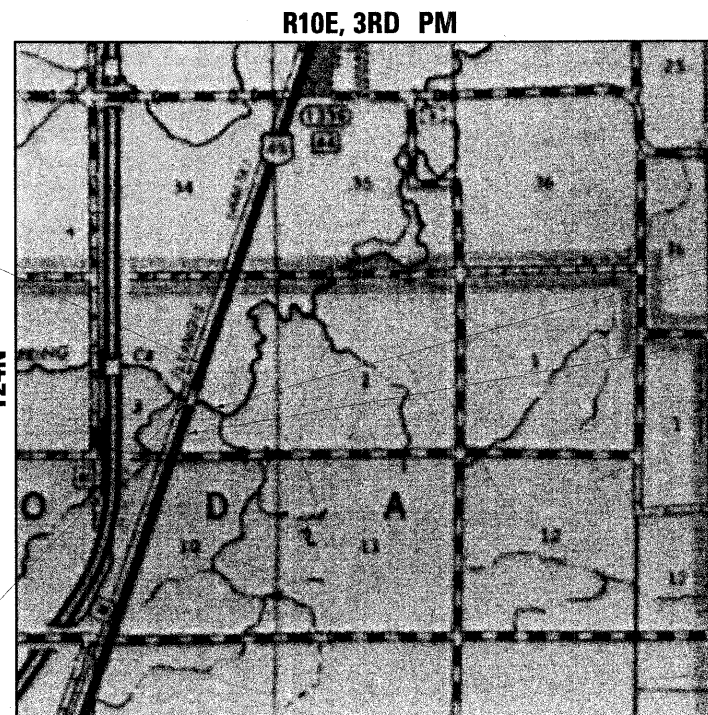
MICROFILMED _____
 REEL NUMBER _____
 AWARDED _____
 RESIDENT ENGINEER _____
 AS BUILT CHANGES WERE MADE ON THE FOLLOWING SHEETS _____

J.U.L.I.E.
JOINT UTILITY LOCATION INFORMATION FOR EXCAVATION
1-800-892-0123

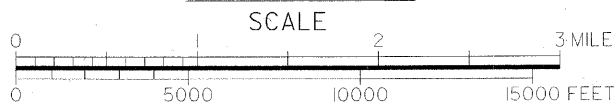
DISTRICT 3 NO. (815) 434-6131
 PROJECT ENGINEER: JOE KANNEL
 UNIT CHIEF: PAT BRABOY
 TOWNSHIP: LODA
 CONTRACT NO.: 66610



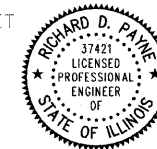
STATION 2146+00
S.N. 038-0214
THREE SPAN 15" CIP RC SLAB
95'-0" BK TO BK ABUTMENTS



LOCATION MAP



GROSS LENGTH = 2000 FT. = 0.38 MI.
NET LENGTH = 2000 FT. = 0.38 MI.



Richard D. Payne DATE: 04/14/06
ILLINOIS PROFESSIONAL LICENSE NO. 37421
(EXPIRATION DATE: 11-30-06)

PRINTED BY THE AUTHORITY
OF THE STATE OF ILLINOIS