

ROUTE NO.	SECTION	COUNTY	TOTAL SHEETS	SHEET NO.
FAS 338	34BR	IRROQUOIS	49	37
STA.	TO STA.			
FED. ROAD DIST. NO. 2	ILLINOIS	FED. AID PROJECT		

CONTRACT NO. 66610

B.M. - N. & W. T. P. Rt Sta - 2154+80
Elev. - 180.69

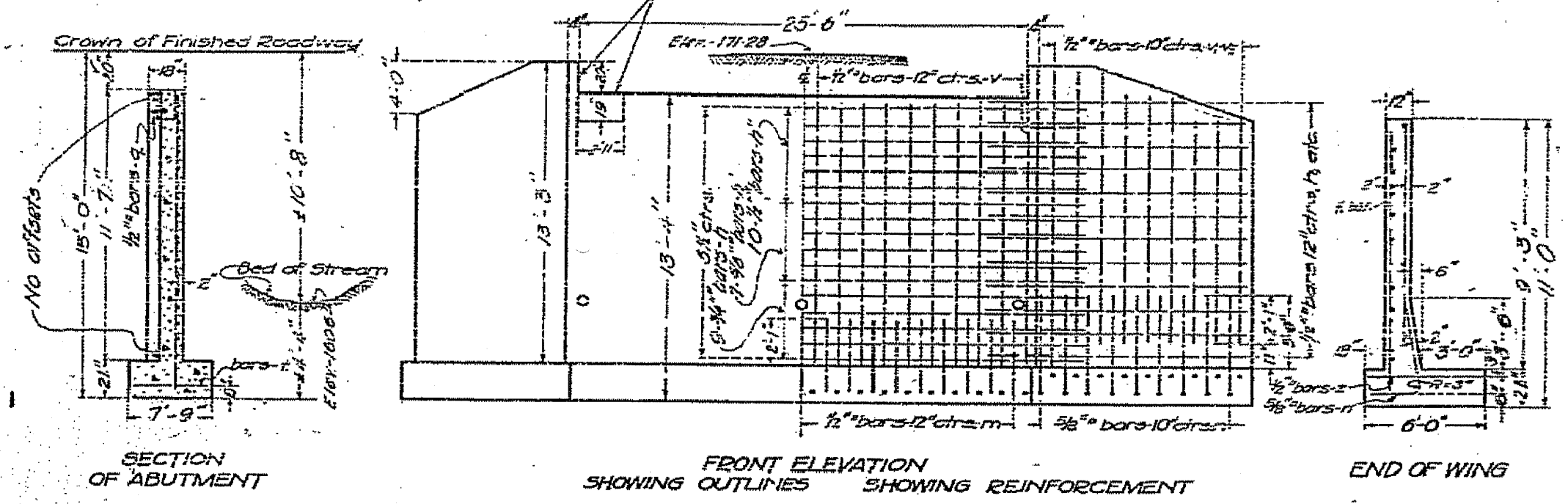
STATE OF ILLINOIS
DEPARTMENT OF TRANSPORTATION
STATE HIGHWAY DEPARTMENT
R. C. ABUTMENTS FOR GIRDER BRIDGE
HEIGHT OVER ALL 15 FT.

ROUTE NO.	COUNTY	SEC.	TOTAL SHEETS	SHEET NO.
25	IRROQUOIS	34	31	28

Sheet No. 2
2 sheets

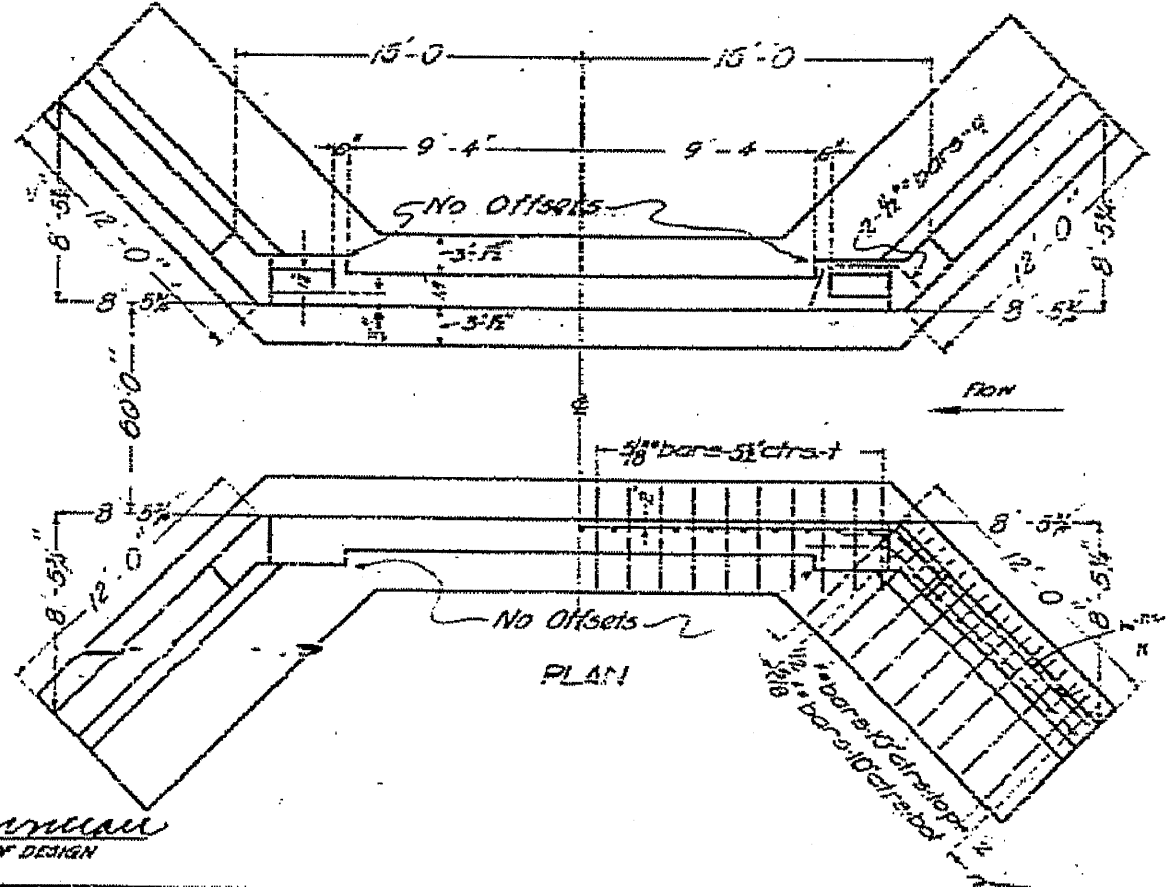
Note: - Removal of existing structure is included in contract.

Tar paper joint - fixed end.
1/2" bituminous felt joint - expansion end.



HORIZONTAL STEEL-PLAIN WALL

Bars	Length of Bridge Seat							
	15'-0"	20'-0"	15'-0"	15'-0"	15'-0"	15'-0"	15'-0"	15'-0"
No.	6	7	7	5	5	6	7	7
Size	1/2"	1/2"	1/2"	1/2"	1/2"	1/2"	1/2"	1/2"
Cts.	6 1/2	7 1/2	7 1/2	5 1/2	5 1/2	6 1/2	7 1/2	7 1/2
No.	6	7	7	5	5	6	7	7
Size	1/2"	1/2"	1/2"	1/2"	1/2"	1/2"	1/2"	1/2"
Cts.	6 1/2	7 1/2	7 1/2	5 1/2	5 1/2	6 1/2	7 1/2	7 1/2
Thickness of Wall	12	12	12	18	18	18	18	18



BILL OF MATERIAL

Bars	No.	Size	Length
v	52	1/2"	17'-6"
v	24	1/2"	11'-6"
v	16	1/2"	10'-0"
v	16	1/2"	8'-0"
m	18	5/8"	32'-6"
m	18	5/8"	31'-6"
m	20	5/8"	35'-0"
t	48	5/8"	12'-0"
t	2	5/8"	10'-6"
m	52	1/2"	5'-0"
n	52	5/8"	7'-0"
n	114	3/8"	7'-6"
z	52	1/2"	8'-3"
z	2	1/2"	6'-0"

Reinforcing Steel - 5840
Concrete - 4145 980

Class A concrete to be used throughout. Proportions 1-2 1/2-4

STATION 2146+00
STATE BOND ISSUE-ROUTE-25
SECTION 34- IRROQUOIS COUNTY

COMPUTED - W. R. TERRY
CHECKED - E. J. HALL
DRAWN - J. L. HALL
DESIGNED - J. L. HALL
ASSEMBLED - J. L. HALL
SPECIAL CHECKED - J. L. HALL

EXAMINED
APPROVED
STATE HIGHWAY ENGINEER

PASSED
APPROVED
ENGINEER OF DESIGN