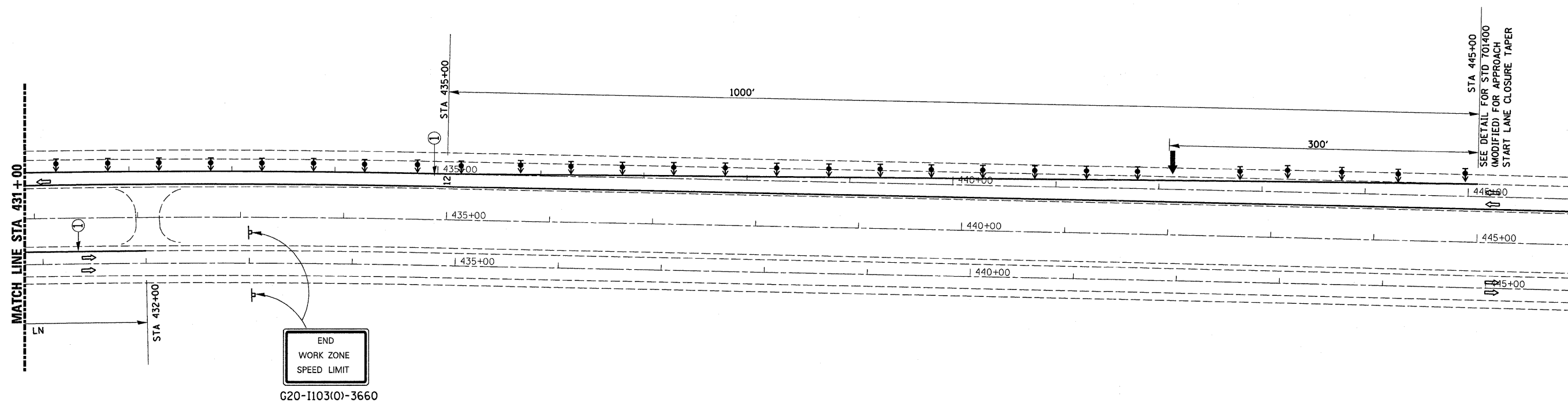


STAGE II EAST END 0009 & 0010

CONTRACT NO. 66623

F.A.I. RTE.	SECTION	COUNTY	TOTAL SHEETS	NO.
80	106-1,2/RS-3, I	BUREAU	116	40
STA. 431+00		TO STA. 446+00		
FED. ROAD DIST. NO. _		ILLINOIS	FED. AID PROJECT	



SYMBOLS

- Arrow board
- Work area
- Sign
- Direction indicator barricade with steady burn monodirectional light. (50') Centers
- Type II barricade, drum, or vertical barricade with steady burn monodirectional light. (100') Centers
- Temporary concrete barrier
- Type C Monodirectional reflector. (50') Centers
- Vertical panel with steady burn monodirectional light. (25') Centers
- Impact attenuator

- ① Wet temporary pavement marking tape - TY III shall be placed throughout the taper and along-side the work area. The right edge line shall be white and the left edge line shall be yellow.
- ② Vertical panels at (25') centers with steady burning monodirectional lights.
- ③ SEE STD 701402 FOR DETAILS NOT SHOWN

PLOT DATE = Sep 04, 2008 - 07:43:21 AM
 FILE NAME = c:\pwworkspace\brb\proj\66623\stage11a.dgn
 PLOT SCALE = 52.9412' / IN.
 USER NAME = brb\brb

STAGE II SN 006-0009 & SN 006-0010 STA 431+00 TO STA 446+00