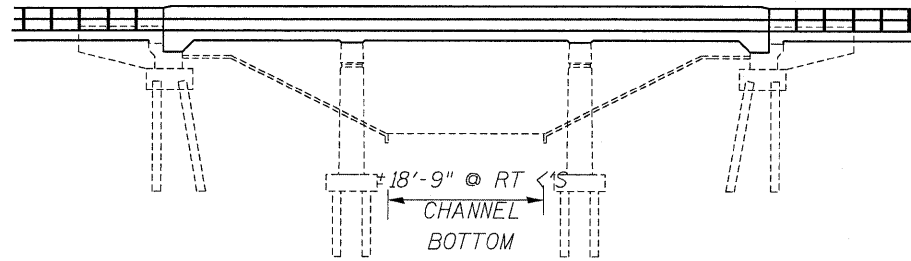


F.A.P. RTE.	SECTION	COUNTY	TOTAL SHEETS	SHEET NO.
80	06-1,2,RS-3, 1	BUREAU	116	43
STA.	TO STA.			
FED. ROAD DIST. NO.	ILLINOIS		FED. AID PROJECT	

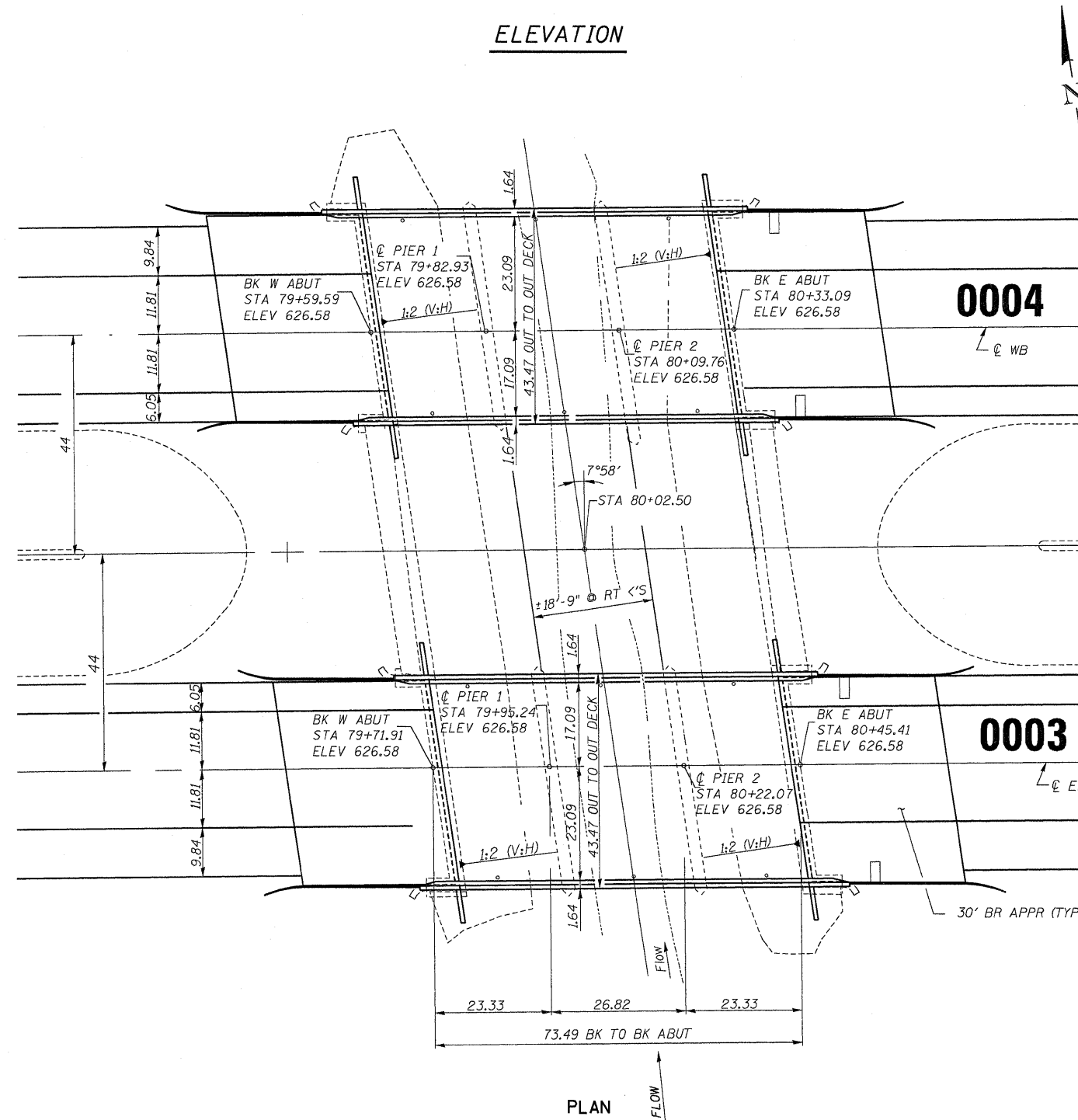
**EXISTING STRUCTURE**

THE EXISTING STRUCTURE CONSISTS OF A 3 SPAN CONTINUOUS CONCRETE SLAB W/SOLID FACE PIERS ON SPREAD FOOTINGS W/TIMBER PILING.

IT HAS A 73'-6" BACK TO BACK ABUTMENT LENGTH. THE STRUCTURE IS TO REMAIN IN PLACE WITH PROPOSED REPAIRS.



**ELEVATION**



**GENERAL NOTES**

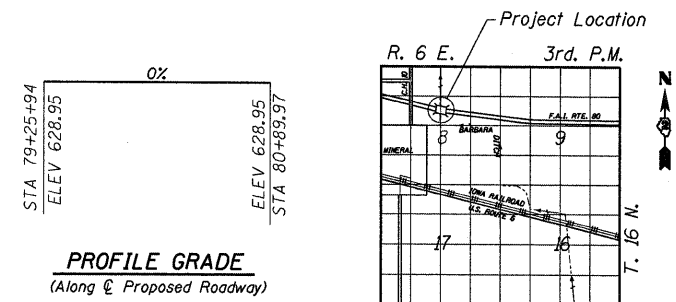
- 1.) PLAN DIMENSIONS AND DETAILS RELATIVE TO EXISTING PLANS ARE SUBJECT TO ROUTINE VARIATION. THE CONTRACTOR SHALL FIELD VERIFY EXISTING DIMENSIONS AND DETAILS AFFECTING NEW CONSTRUCTION AND MAKE NECESSARY APPROVED ADJUSTMENTS PRIOR TO CONSTRUCTION OR ORDERING OF MATERIALS. SUCH VARIATIONS SHALL NOT BE CAUSE FOR ADDITIONAL COMPENSATION FOR A CHANGE IN SCOPE OF THE WORK, HOWEVER, THE CONTRACTOR WILL BE PAID FOR THE QUANTITY ACTUALLY FURNISHED BASED UPON THE UNIT PRICE BID FOR THE WORK.
- 2.) LAYOUT OF THE SLOPE PROTECTION SYSTEM MAY BE VARIED TO SUIT GROUND CONDITIONS IN THE FIELDS AS DIRECTED BY THE ENGINEER.

**PROPOSED WORK**

- 1.) CHANNEL EXCAVATION
- 2.) PLACEMENT OF SCOUR COUNTERMEASURE

**EXISTING CONDITIONS**

(TO BE USED FOR BLOCK DESIGN)  
 STREAM SLOPE 14.5 FT/MILE  
 MAX DESIGN VELOCITY 6 FT/SEC  
 SHEAR STRESS OF EXISTING SOIL 0.14 TONS/SO FT



**PROFILE GRADE**  
(Along  $\bar{C}$  Proposed Roadway)

**LOCATION SKETCH**  
(NTS)

**TOTAL BILL OF MATERIALS**

ITEM	UNIT	TOTAL
ARTICULATED BLOCK REVETMENT MAT	50 YDS	486
GEOTECHNICAL FABRIC (SPECIAL)	50 YDS	486
CHANNEL EXCAVATION	CU YDS	570
BEDDING MATERIAL (SPECIAL)	CU YDS	119
SLOPE WALL REMOVAL	50 YDS	144

**GENERAL PLAN & ELEVATION**

FAI ROUTE 80 OVER BARBARA DITCH  
 SECTION 06-1B-1R  
 BUREAU COUNTY  
 STATION 80+02.50  
 SN 006-0003 EB  
 SN 006-0004 WB



Expires Nov. 30, 2010