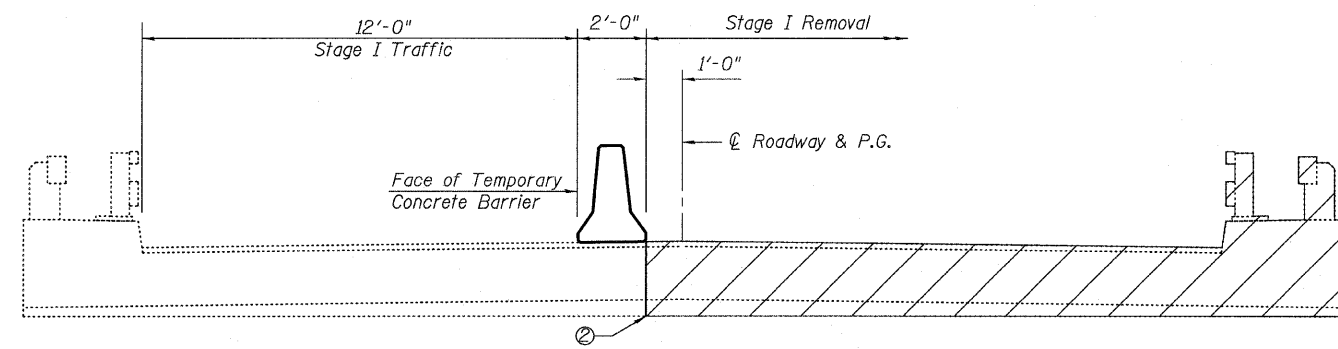


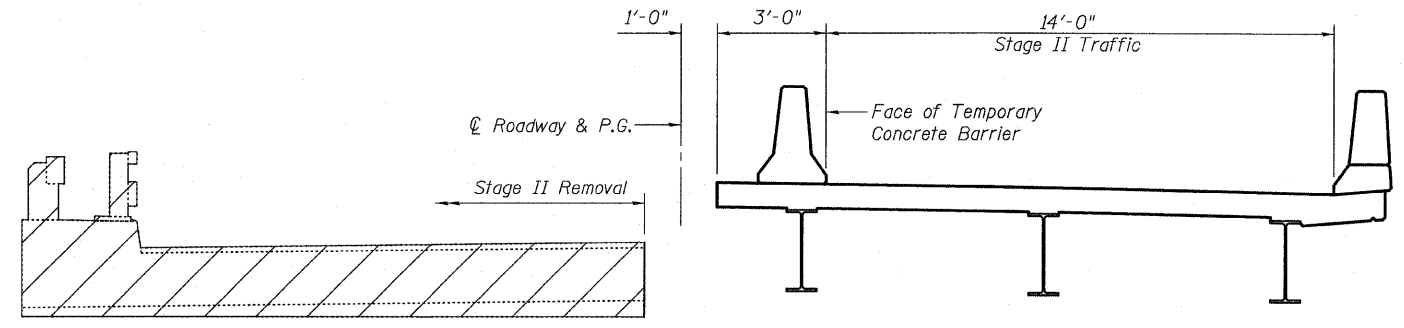
STATE OF ILLINOIS
DEPARTMENT OF TRANSPORTATION

ROUTE NO.	SECTION	COUNTY	SHEET NO.	SHEET NO.
FAP 326	119BR	GRUNDY	68	23
FED. ROAD DIST. NO. 7		ILLINOIS	FED. AID PROJECT-	

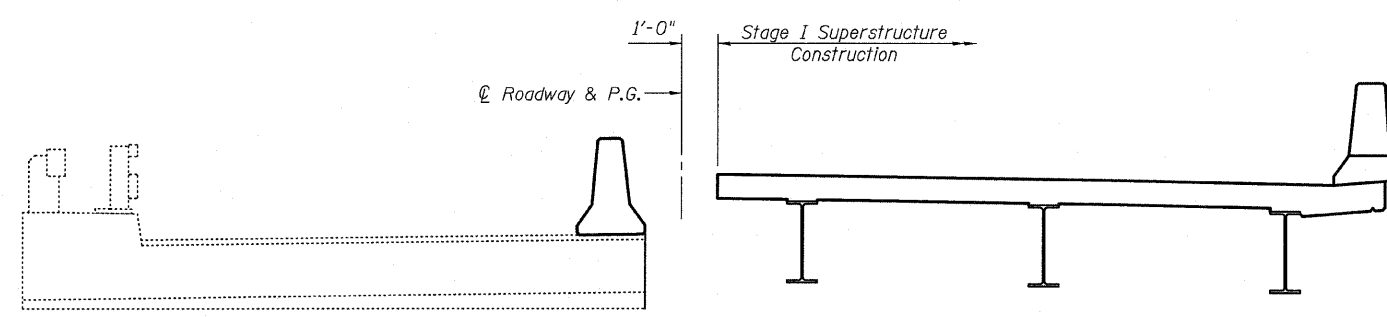
Contract #66687



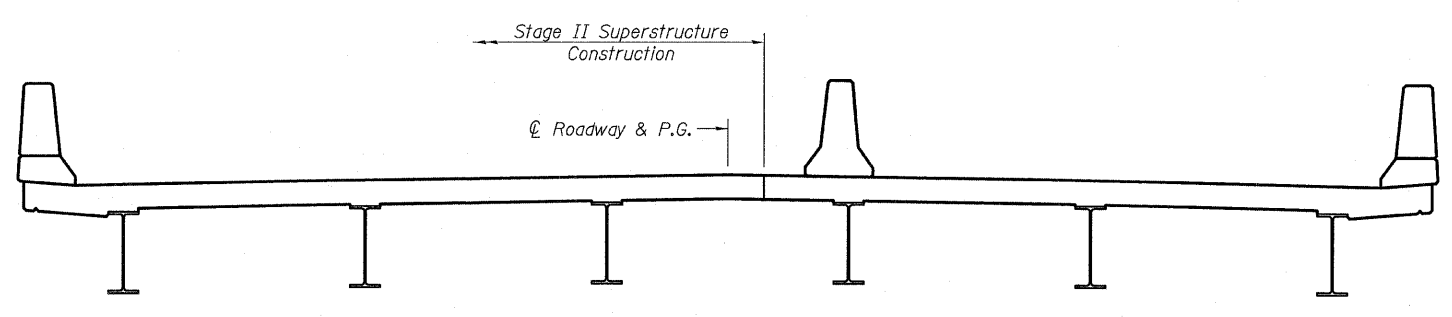
STAGE I REMOVAL



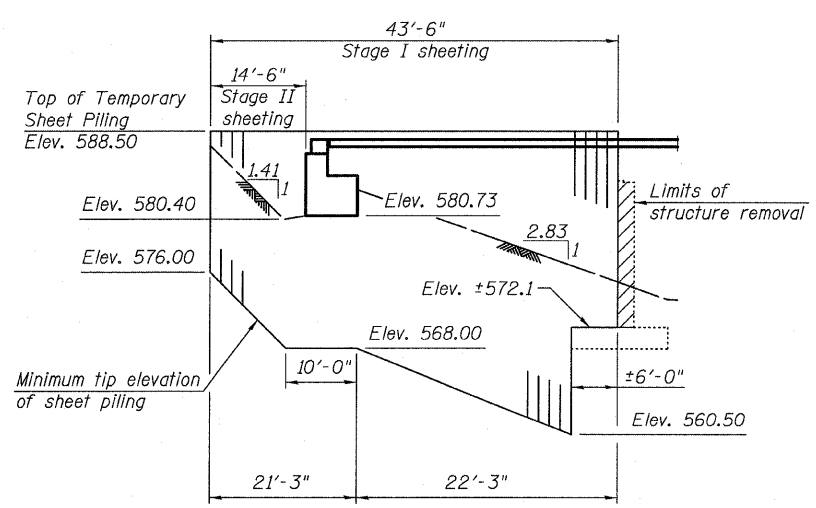
STAGE II REMOVAL



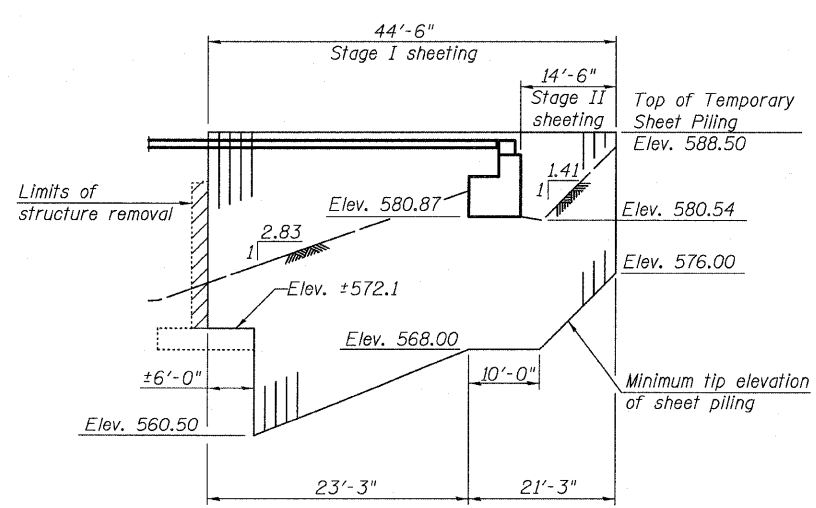
STAGE I CONSTRUCTION



STAGE II CONSTRUCTION



SOUTH ABUTMENT
Minimum Section
Modulus = 22.8 in³/ft



NORTH ABUTMENT
Minimum Section
Modulus = 22.8 in³/ft

- Notes:
- All views looking north.
 - Existing concrete deck, piers, and abutments shall be saw cut full depth at stage removal line prior to Stage I removal. Cost included with Removal of Existing Structures.
 - For quantity of Temporary Concrete Barrier and related traffic control, see roadway plans.
 - For details of Temporary Concrete Barrier, see sheet 4 of 27.
 - If the Contractor chooses to alter the temporary cantilevered sheet piling design requirements shown on the plans, a design submittal including plan details and calculations will be required for review and acceptance by the Engineer.
 - The Contractor shall connect the first sheet to the existing abutment wall to ensure stability of sheets driven to the top of the existing footing. This connection shall be reviewed and accepted by the Engineer and included in the cost of Temporary Sheet Piling.
 - The Contractor shall monitor the existing structure during Stage I removal and pile driving to assure that no movement or damage is occurring. If movement or damage is observed, the Contractor shall immediately stop work and notify the Engineer. Cost included in Removal of Existing Structures.
 - Excavation behind existing abutment walls shall be performed to balance front and back soil pressure before removing the existing superstructure. The Contractor shall sawcut the upper portion of the existing abutment at the stage removal line before Stage I removal to ensure the remaining portion will not be prematurely damaged.
 - See sheets 17, 18, 20 & 21 of 27 for stage construction limits for substructure units.

STAGE CONSTRUCTION DETAILS
IL 47 OVER JOHNNY RUN
FAP ROUTE 326 - SECTION 119BR
GRUNDY COUNTY
STATION 582+65.75
STRUCTURE NO. 032-0112

DESIGNED	NEL
CHECKED	MJP
DRAWN	NEL
CHECKED	MJP

TEMPORARY SHEET PILING DETAIL

Eastport Business Center 1
100 Lanter Court, Suite 1
Collinsville, Illinois 62234
618-345-2200
Design Firm License No. 184.001115