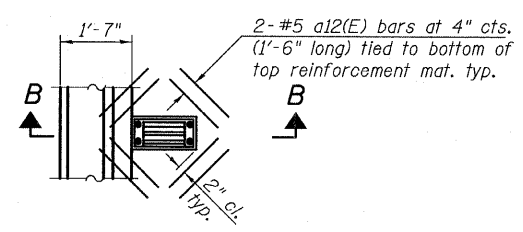
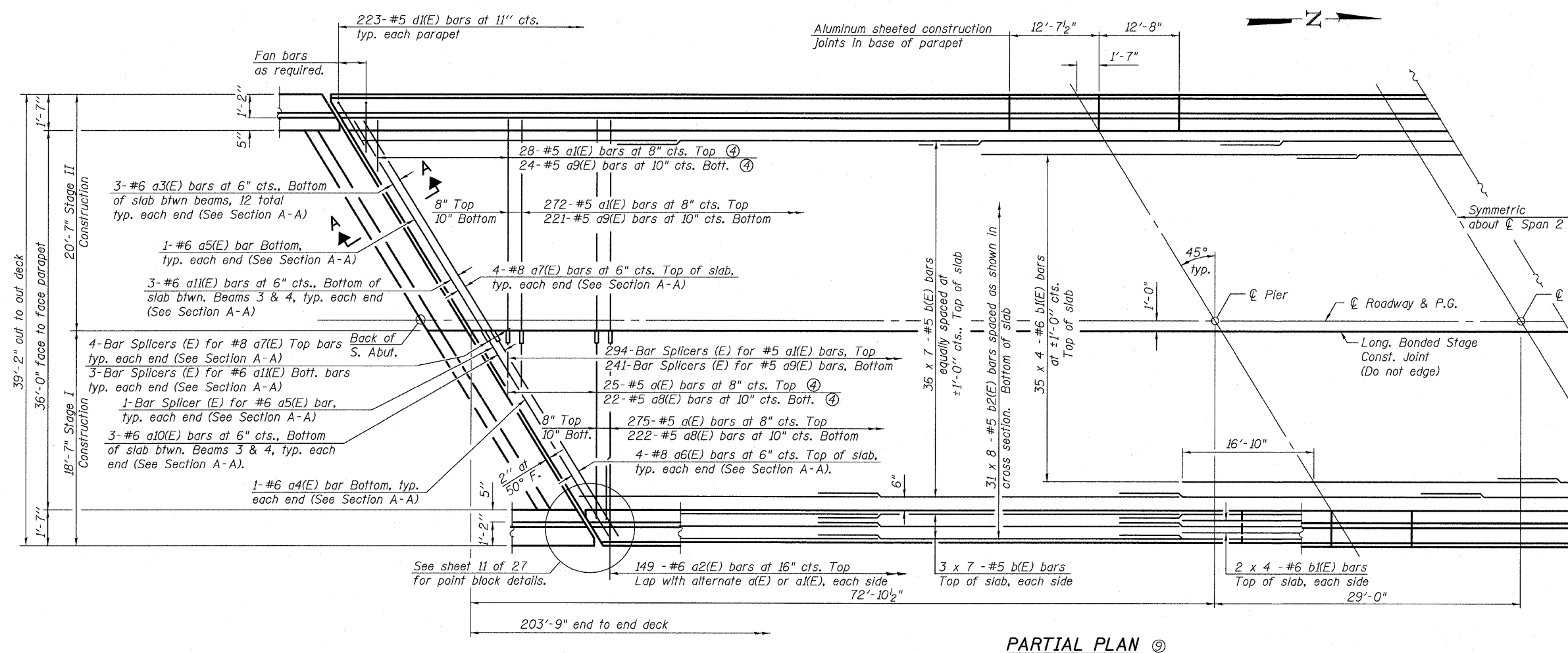


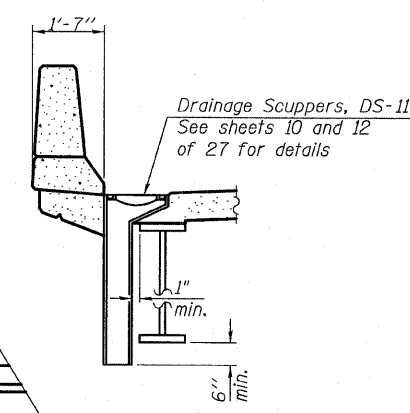
STATE OF ILLINOIS
DEPARTMENT OF TRANSPORTATION

ROUTE NO.	SECTION	COUNTY	SHEET	SHEET	SHEET NO.
FAP 326	119BR	GRUNDY	68	29	27 SHEETS
FED. ROAD DIST. NO. 7	ILLINOIS	FED. AID PROJECT			

Contract #66687

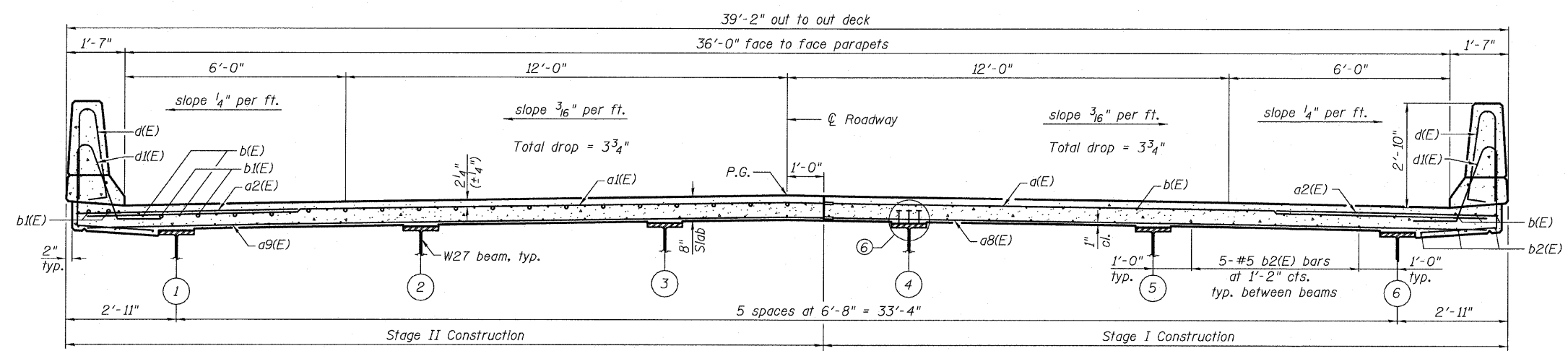


PLAN 10



SECTION B-B

- Notes:
- See sheet 10 of 27 for superstructure details and Bill of Material.
 - Bars indicated thus 36 x 7-#5 etc. indicates 36 lines of bars with 7 lengths per line.
 - See sheet 10 of 27 for parapet reinforcement and Section A-A.
 - Order a(E), a1(E), a8(E) and a9(E) bars full length. Cut to fit skew and use remainder of bars in opposite end.
 - Minimum bar lap: #5 bars = 1'-8"
#6 bars = 2'-0".
 - See sheet 14 of 27, for shear stud details. Shear studs are located at Spans 1, 2 & 3, see beam elevation.
 - For location of drainage scuppers, see sheet 1 of 27.
 - See sheet 23 of 27 for bar splicer assembly details.
 - Bars x(E) and x1(E) at concrete end beam not shown for clarity. See Section A-A for location & call outs.
 - Cut longitudinal reinforcement to clear drainage scuppers.



NEAR PIER & SPAN 2

NEAR MIDSPAN, SPANS 1 & 3

CROSS SECTION
(Looking North)

DESIGNED	NEL
CHECKED	JGS
DRAWN	NEL
CHECKED	JGS

SUPERSTRUCTURE
IL 47 OVER JOHNNY RUN
FAP ROUTE 326 - SECTION 119BR
GRUNDY COUNTY
STATION 582+65.75
STRUCTURE NO. 032-0112

OATES ASSOCIATES
Consulting Engineers
Eastport Business Center 1
100 Lanter Court, Suite 1
Collinsville, Illinois 62234
618-345-2200
Design Firm License No. 184.001115