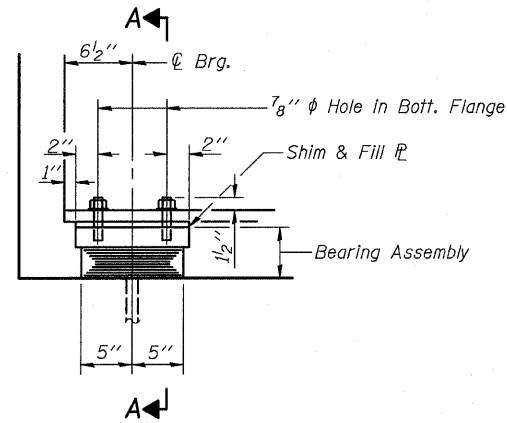
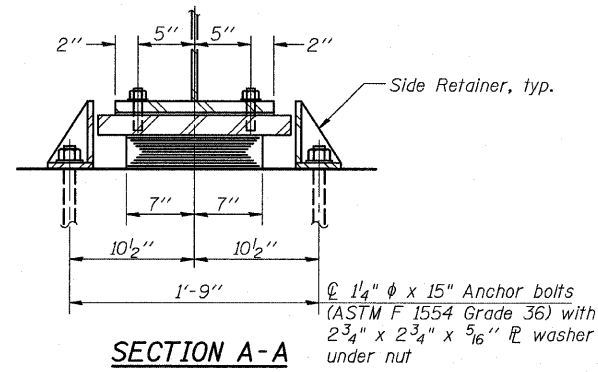


STATE OF ILLINOIS
DEPARTMENT OF TRANSPORTATION

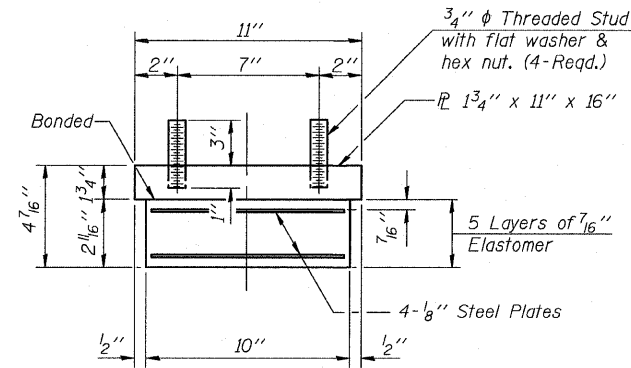


ELEVATION AT ABUT.

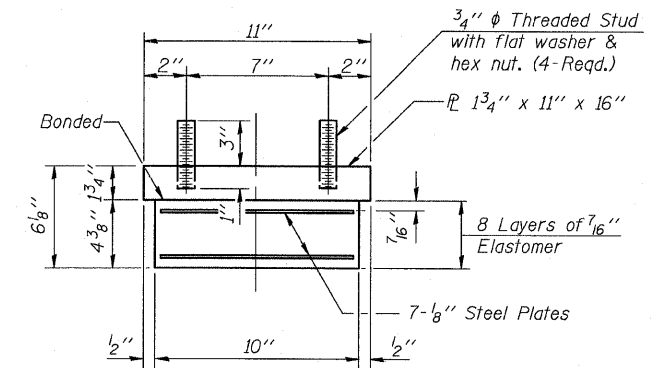


SECTION A-A

① 1/4" ϕ x 15" Anchor bolts
(ASTM F 1554 Grade 36) with
2 3/4" x 2 3/4" x 5/16" PL washer
under nut

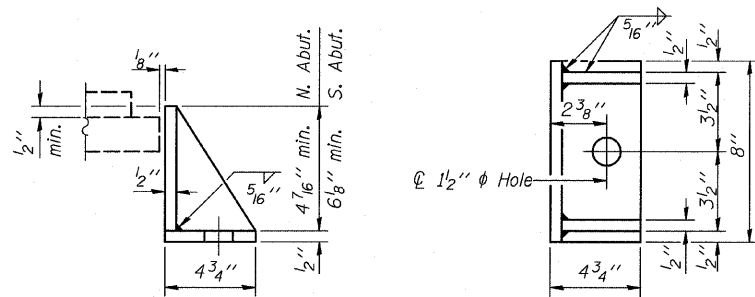


BEARING ASSEMBLY AT NORTH ABUTMENT ⑥
(6 Required)



BEARING ASSEMBLY AT SOUTH ABUTMENT ⑥
(6 Required)

TYPE I ELASTOMERIC EXP. BRG. AT ABUTMENTS



SIDE RETAINER AT ABUTMENTS ⑦

(24 Required)

SHIM TABLE ⑧

	Beam 1	Beam 2	Beam 3	Beam 4	Beam 5	Beam 6
S. Abut.	—	—	—	1/4"	—	—
Pier 1	—	—	—	1/8"	—	—
Pier 2	—	—	1/8"	—	—	—
N. Abut.	—	—	1/4"	—	—	—

- Notes:
- Anchor bolts shall be ASTM F1554 all-thread or an Engineer-approved alternate material of the grade and diameter specified. ASTM A307 Grade C anchor bolts may be used in lieu of ASTM F1554 Grade 36 (Fy=36ksi). The corresponding specified grade of AASHTO M314 anchor bolts may be used in lieu of ASTM F1554.
 - Anchor bolts for side retainers may be cast in place or installed in holes drilled before or after members are in place.
 - Drilled and set anchor bolts shall be installed according to Article 521.06 of the Standard Specifications.
 - Side retainers and other steel members required for the bearing assembly shall be included in the cost of Elastomeric Bearing Assembly, Type I.
 - The structural steel plates of the Bearing Assembly and Side Retainers shall conform to the requirements of AASHTO M 270 Grade 50W.
 - Shim & fill plates shall not be placed under Bearing Assembly.
 - Two 1/2 in. adjusting shims shall be provided for each bearing in addition to all other plates or shims and placed as shown on bearing details.
 - Equivalent rolled angle with stiffeners will be allowed in lieu of welded plates.

BILL OF MATERIAL

Item	Unit	Total
Elastomeric Bearing Assembly, Type I	Each	12
Anchor Bolts, 1/4" ϕ	Each	24

BEARING DETAILS AT ABUTMENTS
IL 47 OVER JOHNNY RUN
FAP ROUTE 326 - SECTION 119BR
GRUNDY COUNTY
STATION 582+65.75
STRUCTURE NO. 032-0112

DESIGNED	NEL
CHECKED	MJP
DRAWN	NEL
CHECKED	MJP