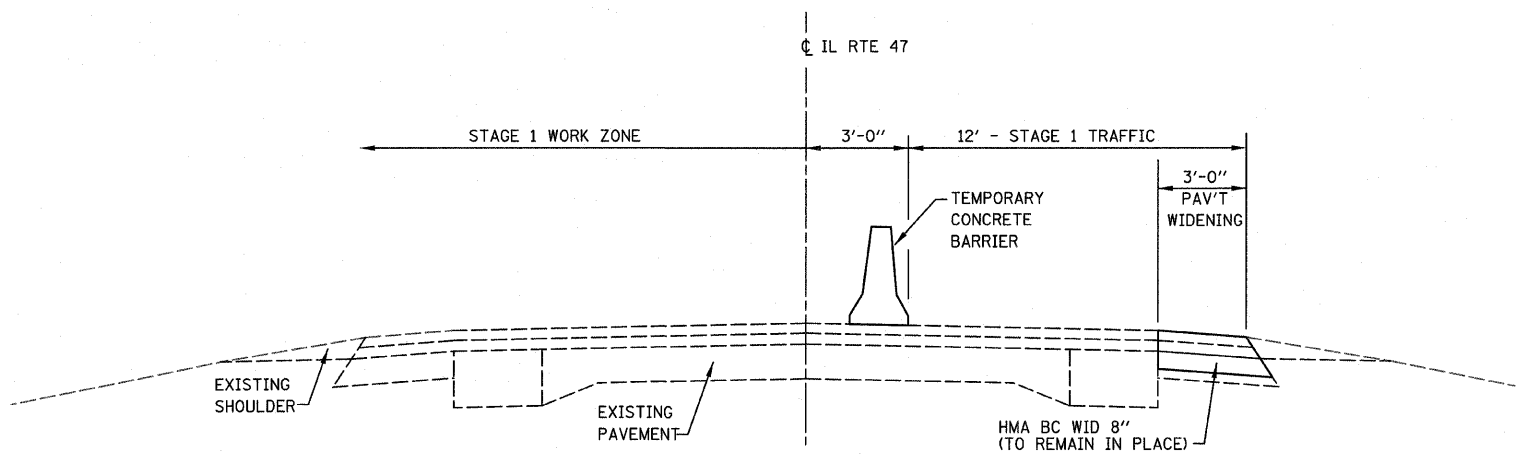


STAGE 1 CONSTRUCTION TYPICAL SECTION
(LOOKING NORTH AT STRUCTURE)
FOR INFORMATION ONLY



STAGE 1 CONSTRUCTION TYPICAL SECTION
(SOUTH OF STRUCTURE, LOOKING NORTH &
NORTH OF STRUCTURE, LOOKING NORTH)

STAGE CONSTRUCTION GENERAL NOTES

1. ONE LANE OF TRAFFIC ON ILLINOIS ROUTE 47 SHALL BE MAINTAINED AT ALL TIMES.
2. THE FURNISHING, PLACEMENT AND REMOVAL OF THE TYPE C BI-DIRECTIONAL REFLECTORS SHALL BE INCLUDED IN THE COST OF "TRAFFIC CONTROL AND PROTECTION, STANDARD 701321."
3. EMERGENCY ACCESS SHALL BE PROVIDED AT ALL TIMES.

SUGGESTED STAGE CONSTRUCTION

SUGGESTED STAGE 1

PHASE 1

1. UTILIZING TRAFFIC CONTROL AND PROTECTION, STANDARD 701326, CONSTRUCT THE HMA BASE COURSE WIDENING, 8" ON THE RT SIDE OF THE ROADWAY FROM STA. 463+67 TO STA. 465+44 AND STA. 466+80 TO STA. 468+39.
2. INSTALL TEMPORARY TRAFFIC SIGNALS AT EACH END OF THE PROJECT, PRIVATE ENTRANCE, FIELD ENTRANCE, AND GRINTER ROAD INTERSECTION PRIOR TO CLOSING LT HALF OF ROADWAY.

PHASE 2

1. UTILIZING TRAFFIC CONTROL AND PROTECTION, STANDARD 701321, DIRECT TRAFFIC ON THE RT LANE OF FAP ROUTE 326.
2. CONSTRUCT TEMPORARY SHEET PILING AT NORTH AND SOUTH SIDE OF EXISTING STRUCTURE AND REMOVE THE LT SIDE OF THE EXISTING STRUCTURE.
3. CONSTRUCT THE LT SIDE OF THE BRIDGE AND BRIDGE APPROACH PAVEMENT.
4. CONSTRUCT THE HMA BASE COURSE WIDENING, 8" ON THE LT SIDE OF FAP ROUTE 326 FROM STA. 463+49 TO STA. 465+07 AND FROM STA. 467+07 TO STA. 468+84.
5. INSTALL GUARD RAIL AND BITUMINOUS STABILIZATION ON LT SIDE OF FAP ROUTE 326.
6. INSTALL TEMPORARY PAVEMENT MARKING.

SUGGESTED STAGE 2

1. UTILIZING TRAFFIC CONTROL AND PROTECTION, STANDARD 701321, DIRECT TRAFFIC ON THE LT LANE OF FAP ROUTE 326.
2. REMOVE THE RT SIDE OF THE EXISTING STRUCTURE.
3. CONSTRUCT THE RT SIDE OF THE BRIDGE AND BRIDGE APPROACH PAVEMENT.
4. CONSTRUCT THE OUTSIDE 5' HMA SHOULDER ON THE RT SIDE OF FAP ROUTE 326 FROM STA. 463+67 TO STA. 465+37 AND FROM STA. 466+77 TO STA. 468+39.
5. INSTALL GUARD RAIL AND BITUMINOUS STABILIZATION ON THE RT SIDE OF FAP ROUTE 326.

SUGGESTED STAGE 3

1. UTILIZING TRAFFIC CONTROL AND PROTECTION, STANDARD 701306, COMPLETE HMA SURFACE REMOVAL, VARIABLE DEPTH, FOR THE RT AND LT LANES OF FAP ROUTE 326 FROM STA. 462+16 TO STA. 465+07 AND STA. 467+07 TO STA. 470+06.
2. CONSTRUCT THE PROPOSED LEVELING BINDER FOR THE RT AND LT LANES OF FAP ROUTE 326 STA. 462+92 TO STA. 465+07 AND STA. 467+07 TO STA. 469+30.
3. CONSTRUCT THE PROPOSED HMA SURFACE COURSE 1.5" FOR THE RT AND LT LANES OF FAP ROUTE 326 FROM STA. 462+16 TO STA. 470+06.
4. CONSTRUCT THE 5' HMA SHOULDER ON THE RT SIDE FROM STA. 463+67 TO STA. 465+07 AND FROM STA. 467+07 TO STA. 468+39.
5. CONSTRUCT THE 1.5" HMA SHOULDER LIFT ON THE RT SIDE FROM STA. 463+67 TO STA. 465+07 AND STA. 467+07 TO STA. 468+39.
6. CONSTRUCT THE 1.5" HMA SHOULDER LIFT ON THE LT SIDE FROM STA. 463+49 TO STA. 465+07 AND STA. 467+07 TO STA. 468+84.
7. CONSTRUCT THE 8' HMA SHOULDER ON THE RT SIDE OF FAP ROUTE 326 FROM STA. 462+16 TO STA. 463+67 AND FROM STA. 468+39 TO STA. 470+06.
8. CONSTRUCT THE 8' HMA SHOULDER ON THE LT SIDE OF FAP ROUTE 326 FROM STA. 462+16 TO STA. 463+49 AND FROM STA. 468+84 TO STA. 470+06.

FILE NAME =	USER NAME = #USER#	DESIGNED -	REVISED -	STATE OF ILLINOIS DEPARTMENT OF TRANSPORTATION	STAGE 1 TYPICAL SECTIONS & STAGING NOTES				F.A.P. RTE.	SECTION	COUNTY	TOTAL SHEETS	SHEET NO.
H:\jeff delete\26854.004.graser\Technical	Production\Civil\sheets\02.dgn	DRAWN -	REVISED -						326	119 BR-2	GRUNDY	52	8
	PLOT SCALE = 20.0000' / IN.	CHECKED -	REVISED -		CONTRACT NO. 66688								
	PLOT DATE = 8/8/2008	DATE -	REVISED -		SCALE:	SHEET NO. OF SHEETS	STA. TO STA.	FED. ROAD DIST. NO.	ILLINOIS FED. AID PROJECT				