

STATE OF ILLINOIS
DEPARTMENT OF TRANSPORTATION

ROUTE NO.	SECTION	COUNTY	TOTAL SHEETS	SHEET NO.
FAP 326	119BR-2	GRUNDY	52	17
FED. ROAD DIST. NO. 7	ILLINOIS	FED. AID PROJECT		

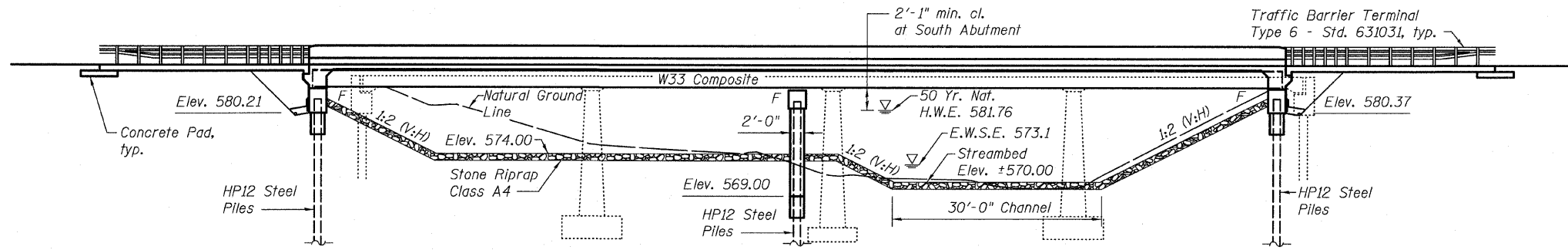
SHEET NO. 1
24 SHEETS

Contract #66688

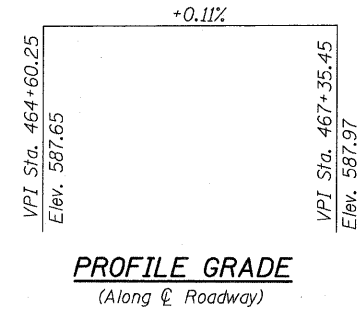
Benchmark: Chiseled square top of wingwall, Southwest corner of South Abutment. Sta. 465+45, 19' Lt. Elev. 588.14

Existing Structure: SN 032-0033 was originally constructed in 1927 as a single span pony truss bridge with closed abutments. In 1954, the original superstructure and wingwalls were removed, and the structure was converted into a four span continuous slab bridge. The original abutment walls were salvaged and incorporated into the North and South piers. Pile bent abutments and a center pier were added. In 1995, the superstructure was rehabilitated. The back-to-back abutment dimension is 138'-0" while the out-to-out width measures 36'-4". The structure is to be replaced using stage construction.

No Salvage.



ELEVATION

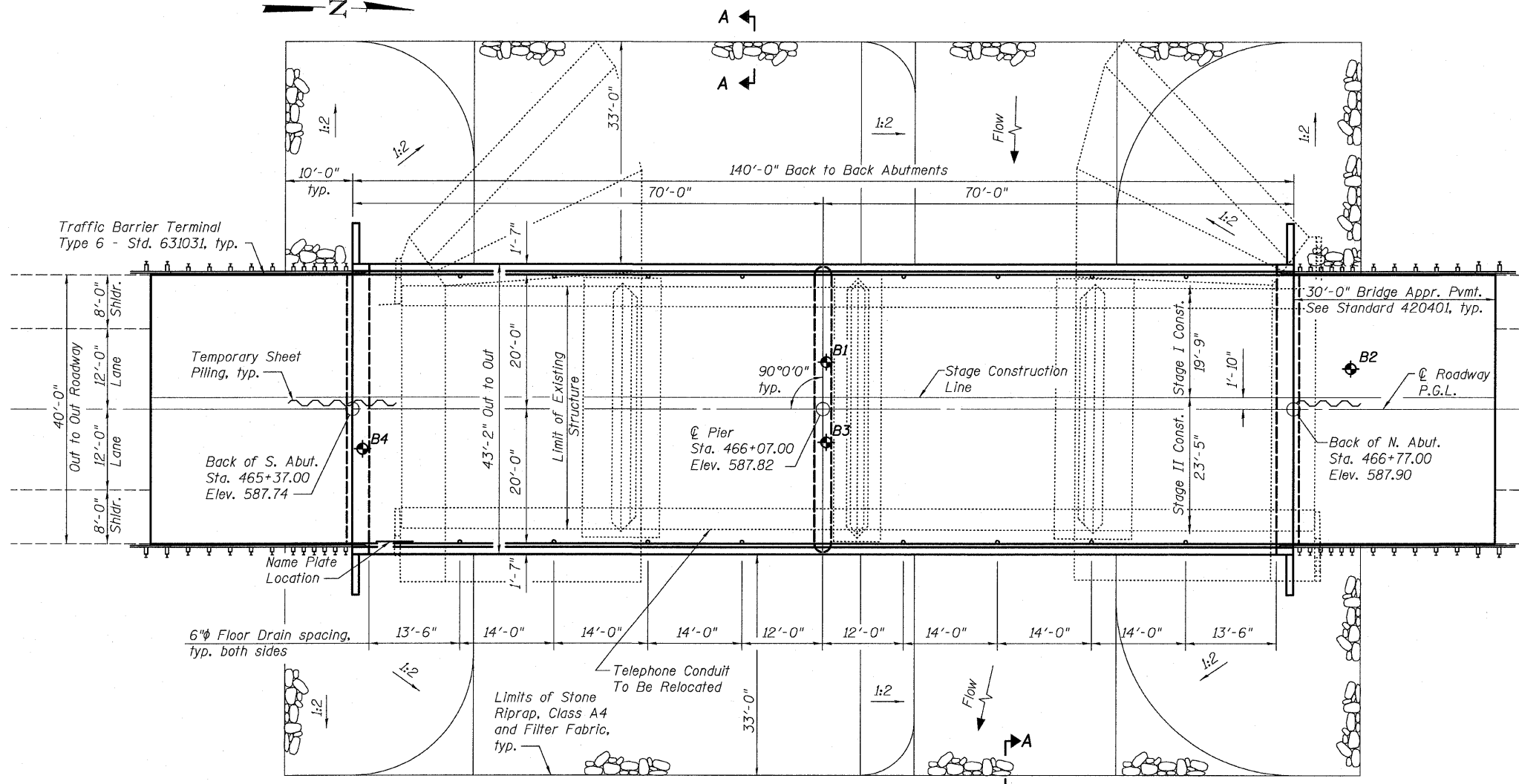
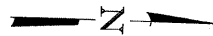


DESIGN SCOUR ELEVATION TABLE

Design Scour Elevation (ft.)	S. Abut.	Pier	N. Abut.
	577.2	566.7	577.4

WATERWAY INFORMATION

Drainage Area = 57.73 Sq. Mi.		Low Grade Elev. 587.65 @ Sta. 464+60.25							
Flood	Freq. Yr.	Q C.F.S.	Opening Sq. Ft.		Nat. H.W.E.	Head - Ft.		Headwater El.	
			Exist.	Prop.		Exist.	Prop.	Exist.	Prop.
Design	10	2207	610	864	580.79	0	0	580.79	580.79
Base	50	3166	714	968	581.76	0	0	581.76	581.76
Base	100	3548	743	1024	582.11	0	0	582.11	582.11
Overtopping									
Max. Calc.	500	4425	752	1041	582.22	0	0	582.22	582.22



PLAN

Notes:
1 See sheet 2 of 24 for Section A-A and Index of Sheets.

STATION 466+07.00
BUILT 200_ BY
STATE OF ILLINOIS
FAP ROUTE 326 - SEC 119BR-2
LOADING HS20
STRUCTURE NO. 032-0116

DESIGN SPECIFICATIONS
2002 AASHTO

LOADING HS20-44
Allow 50#/sq. ft. for future wearing surface.

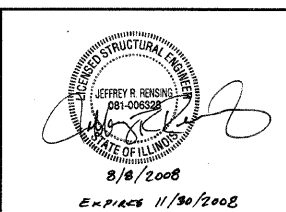
SEISMIC DATA
Seismic Performance Category (SPC) = A
Bedrock Acceleration Coefficient (A) = 0.041g
Site Coefficient (S) = 1.0

DESIGN STRESSES
FIELD UNITS

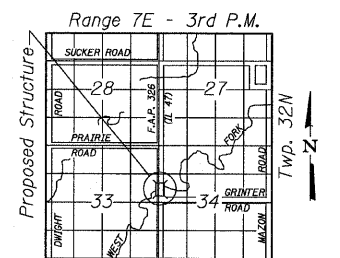
f'c = 3,500 psi
fy = 60,000 psi (Reinforcement)
fy = 50,000 psi (AASHTO M 270 Grade 50W)

APPROVED
FOR STRUCTURAL ADEQUACY ONLY

Jeffrey R. Rensing
ENGINEER OF BRIDGES AND STRUCTURES



NAME PLATE
See Std. 515001



LOCATION SKETCH

GENERAL PLAN
IL 47 OVER WEST FORK MAZON RIVER
FAP ROUTE 326 - SECTION 119BR-2
GRUNDY COUNTY
STATION 466+07.00
STRUCTURE NO. 032-0116



Eastport Business Center 1
100 Lanter Court, Suite 1
Collinsville, Illinois 62234
618-345-2200
Design Firm License No. 184.001115