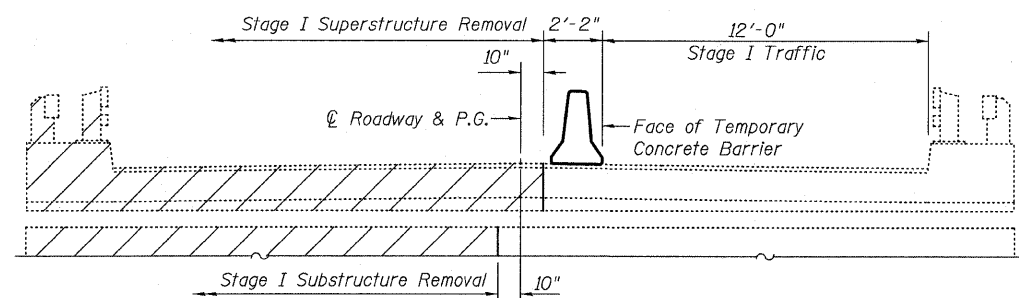


STATE OF ILLINOIS  
DEPARTMENT OF TRANSPORTATION

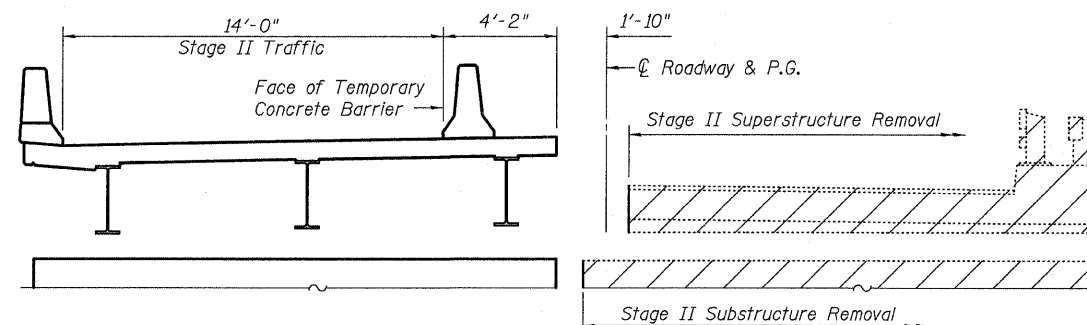
ROUTE NO.	SECTION	COUNTY	TOTAL SHEETS	SHEET NO.
FAP 326	119BR-2	GRUNDY	52	19
FED. ROAD DIST. NO. 7	ILLINOIS	FED. AID PROJECT-		

SHEET NO. 3  
24 SHEETS

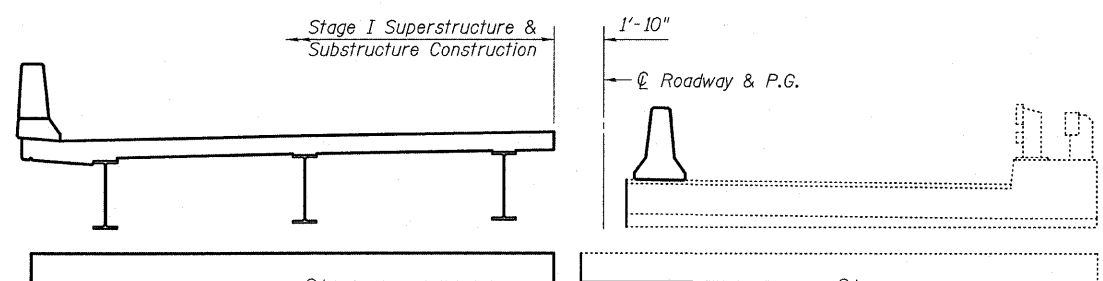
Contract #66688



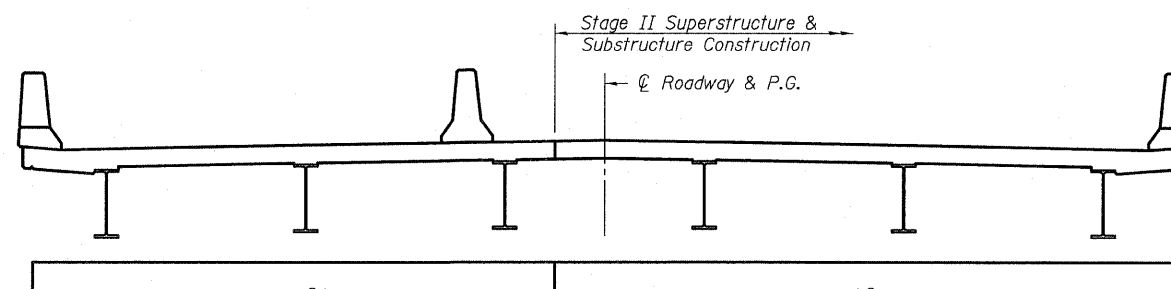
STAGE I REMOVAL ⑧ ⑩



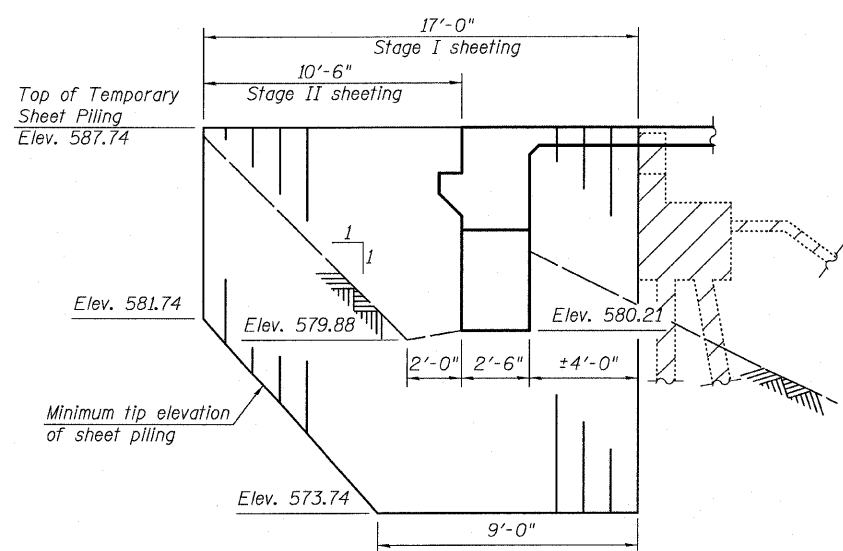
STAGE II REMOVAL



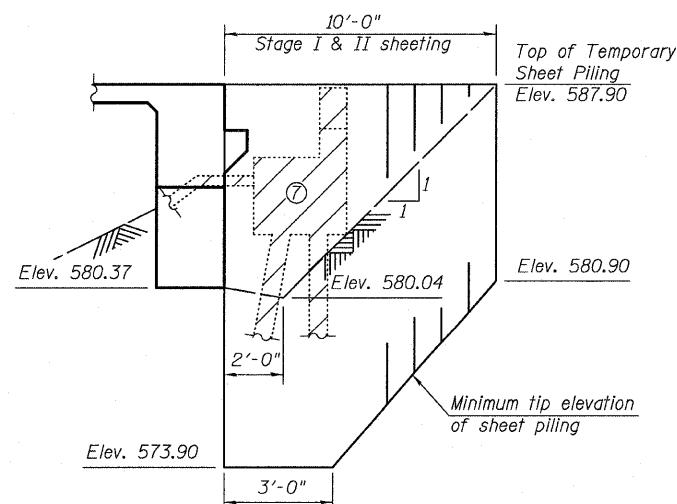
STAGE I CONSTRUCTION



STAGE II CONSTRUCTION



**SOUTH ABUTMENT**  
Minimum Section  
Modulus = 10 in<sup>3</sup>/ft



**NORTH ABUTMENT**  
Minimum Section  
Modulus = 10 in<sup>3</sup>/ft

TEMPORARY SHEET PILING DETAIL

Notes:

- ① All views looking North.
- ② For quantity of Temporary Concrete Barrier and related traffic control, see roadway plans.
- ③ For details of Temporary Concrete Barrier, see sheet 4 of 24.
- ④ If the Contractor chooses to alter the temporary cantilevered sheet piling design requirements shown on the plans, a design submittal including plan details and calculations will be required for review and acceptance by the Engineer.
- ⑤ The Contractor shall connect the first sheet to the existing abutment wall to ensure stability of sheets driven to the top of the existing footing. This connection shall be reviewed and accepted by the Engineer and included in the cost for Temporary Sheet Piling.
- ⑥ Contractor shall monitor the existing structure during Stage I Removal and pile driving to assure that no movement or damage is occurring. If movement or damage is observed, the contractor shall immediately stop work and notify the Engineer. Cost included in Removal of Existing Structures.
- ⑦ Existing North Abutment to be removed to limits of Porous Granular Embankment (Special), minimum. Cost included in Removal of Existing Structures.
- ⑧ During Stage I Removal, contractor shall take precautions not to disturb the existing pile located at the centerline of roadway and supporting the existing abutments.
- ⑨ Hatched areas indicated limits of Removal of Existing Structure.
- ⑩ Existing slopewall to be completely removed. Cost included in Removal of Existing Structure.
- ⑪ Prior to Stage I removal, piers and abutments shall be saw cut full depth at substructure stage removal line.

**STAGE CONSTRUCTION DETAILS**  
**IL 47 OVER WEST FORK MAZON RIVER**  
**FAP ROUTE 326 - SECTION 119BR-2**  
**GRUNDY COUNTY**  
**STATION 466+07.00**  
**STRUCTURE NO. 032-0116**



GATES ASSOCIATES  
Consulting Engineers

Eastport Business Center 1  
100 Lanter Court, Suite 1  
Collinsville, Illinois 62234  
618-345-2200

Design Firm License No. 184.001115