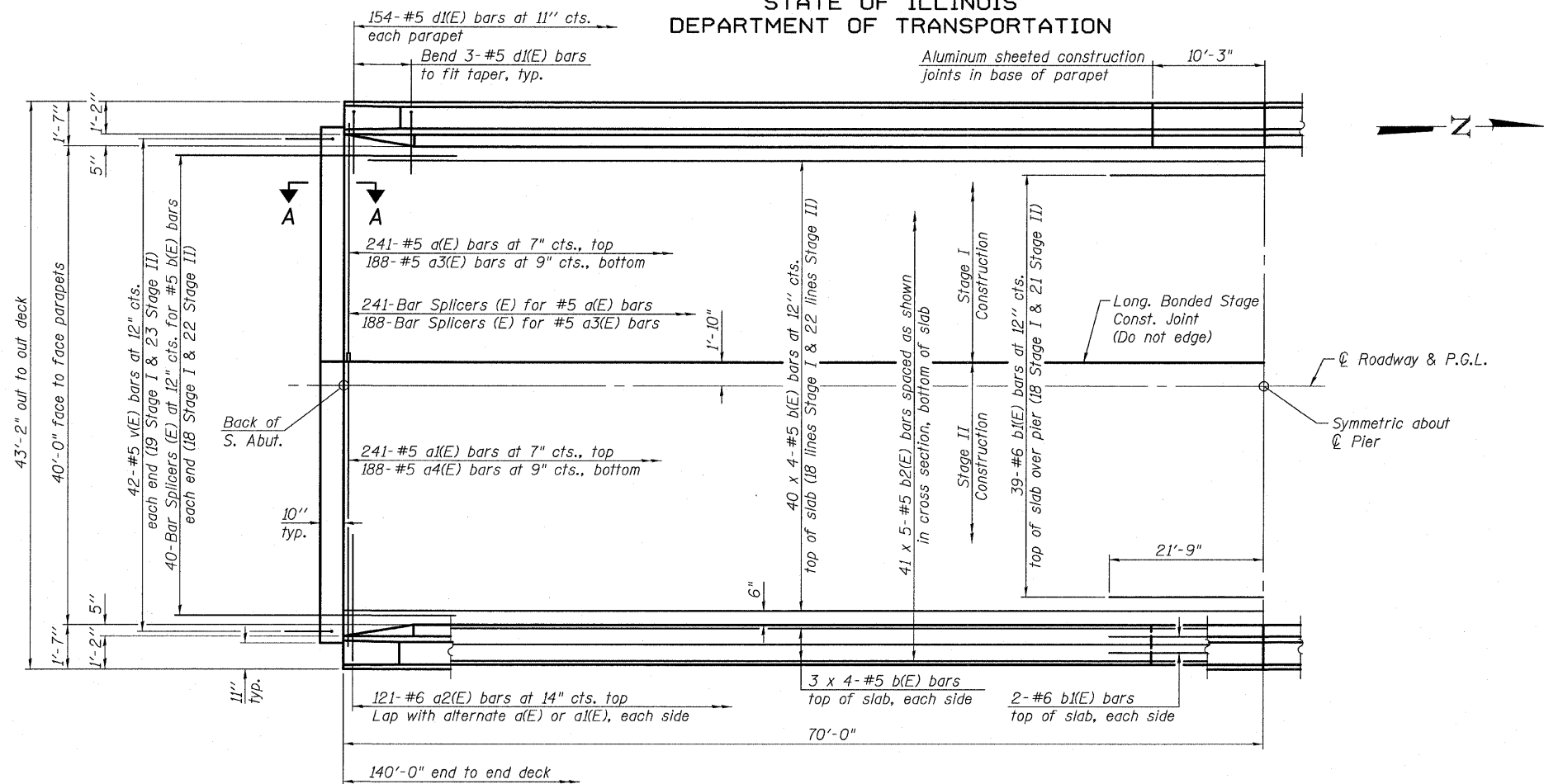


STATE OF ILLINOIS
DEPARTMENT OF TRANSPORTATION

ROUTE NO.	SECTION	COUNTY	TOTAL SHEETS	SHEET NO.	SHEET NO. 9 24 SHEETS
FAP 326	119BR-2	GRUNDY	52	25	
FED. ROAD DIST. NO. 7		ILLINOIS	FED. AID PROJECT		

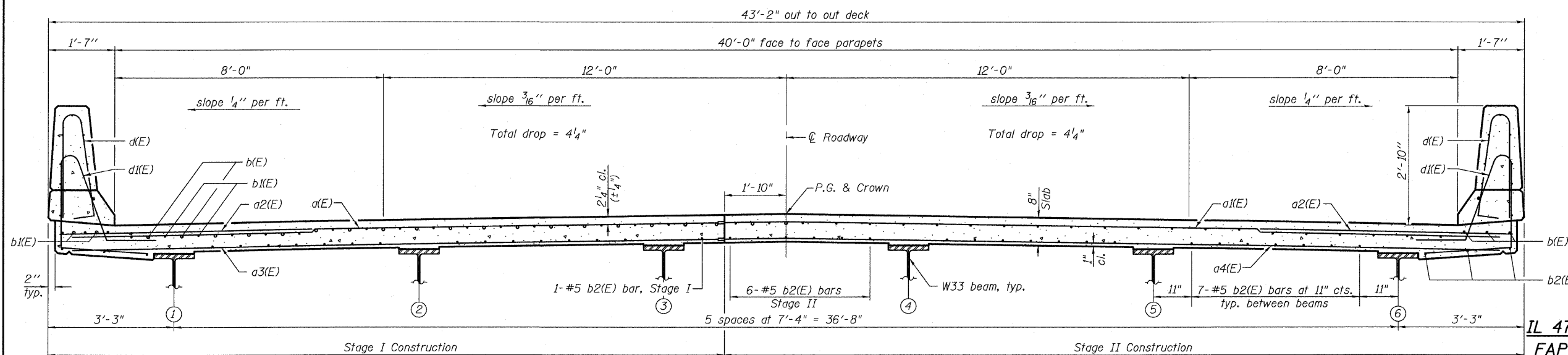
Contract #66688



PARTIAL PLAN

MINIMUM BAR LAP
#5 bar = 1'-8"

- Notes:
- See sheet 11 of 24 for Section A-A.
 - See sheet 10 of 24 for superstructure details and Bill of Material.
 - Bars indicated thus 40 x 4-#5 etc. indicates 40 lines of bars with 4 lengths per line.
 - See sheet 10 of 24 for parapet reinforcement.



CROSS SECTION
(Looking North)

SUPERSTRUCTURE
IL 47 OVER WEST FORK MAZON RIVER
FAP ROUTE 326 - SECTION 119BR-2
GRUNDY COUNTY
STATION 466+07.00
STRUCTURE NO. 032-0116

OATES ASSOCIATES
Consulting Engineers Design Firm License No. 184.001115

Eastport Business Center 1
100 Lanter Court, Suite 1
Collinsville, Illinois 62234
618-345-2200