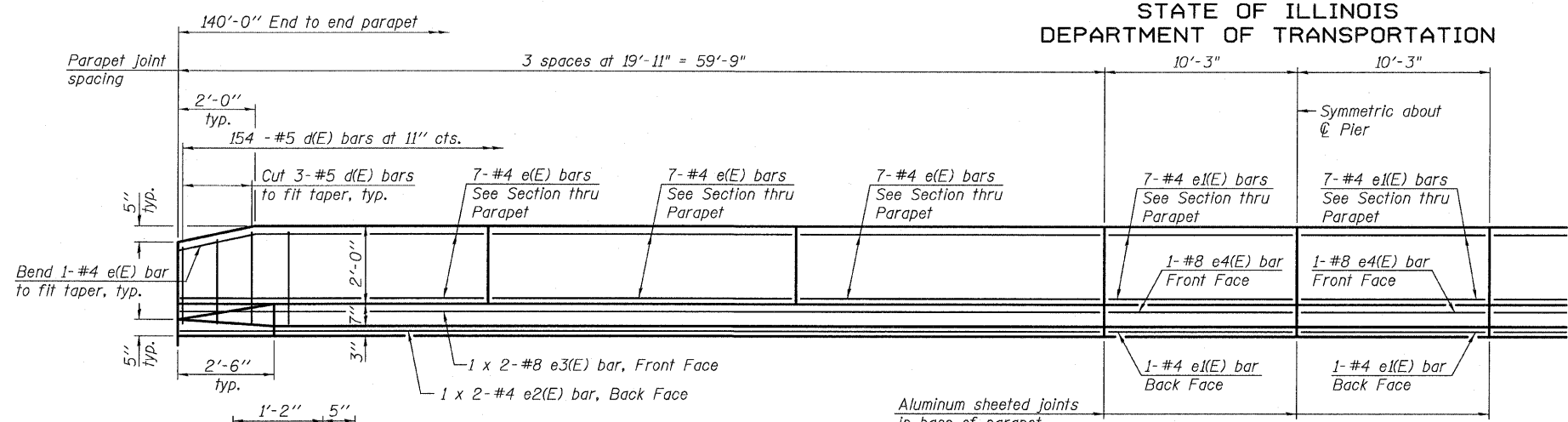


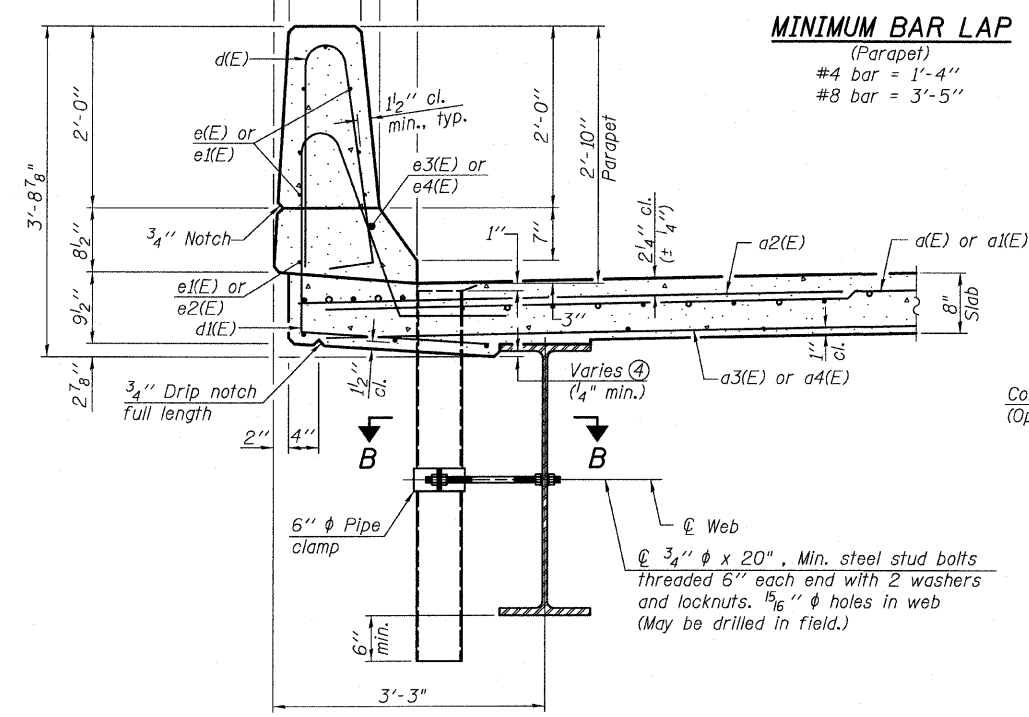
STATE OF ILLINOIS
DEPARTMENT OF TRANSPORTATION

ROUTE NO.	SECTION	COUNTY	TOTAL SHEETS	SHEET NO.
FAP 326	119BR-2	GRUNDY	52	26
FED. ROAD DIST. NO. 7	ILLINOIS	FED. AID PROJECT-		

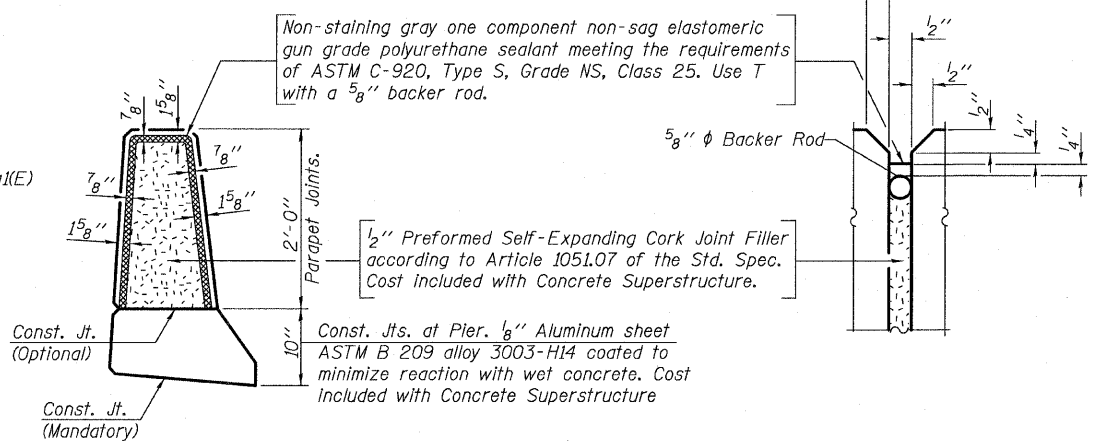
Contract #66688



INSIDE ELEVATION OF PARAPET

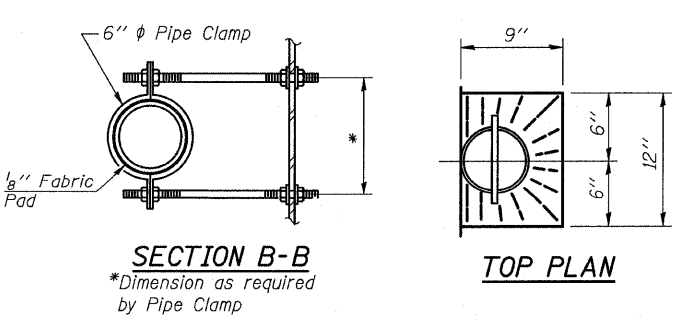


MINIMUM BAR LAP
(Parapet)
#4 bar = 1'-4"
#8 bar = 3'-5"



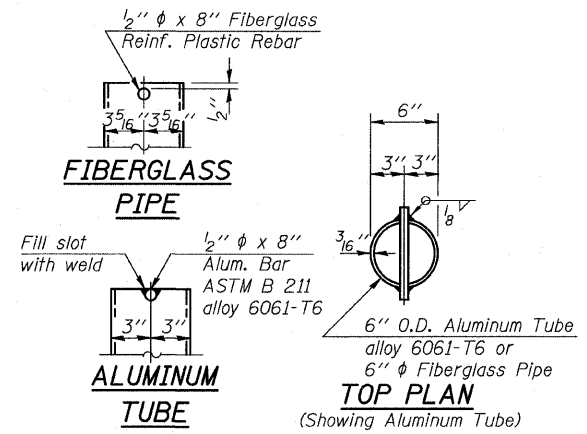
PARAPET JOINT DETAILS

- Notes:
- Floor drains need not be painted.
 - Fiberglass pipe shall conform to ASTM D 2996, with short-time rupture strength hoop tensile stress of 30,000 p.s.i. minimum.
 - Bars indicated thus 1x2-#8 etc. indicates 1 line of bars with 2 lengths per line.
 - Dimension varies throughout the length of the structure from 1/4" minimum at the maximum fascia beam fillet height.



SECTION B-B
*Dimension as required by Pipe Clamp

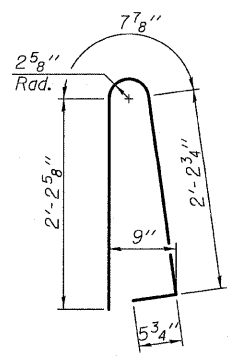
TOP PLAN



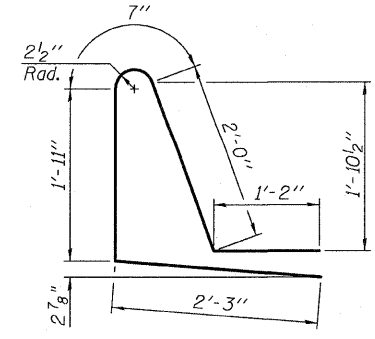
FIBERGLASS PIPE

ALUMINUM TUBE

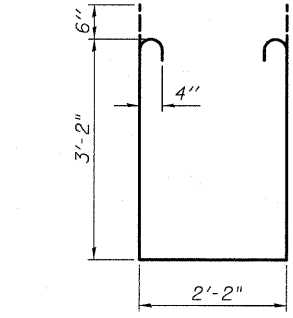
TOP PLAN
(Showing Aluminum Tube)



BAR d(E)

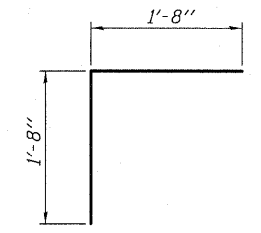


BAR d1(E)



BAR s(E)

BAR s1(E)



BAR v(E)

SUPERSTRUCTURE BILL OF MATERIAL

Bar	No.	Size	Length	Shape
a(E)	241	#5	19'-3"	—
a1(E)	241	#5	22'-11"	—
a2(E)	242	#6	6'-0"	—
a3(E)	188	#5	19'-3"	—
a4(E)	188	#5	22'-11"	—
b(E)	184	#5	36'-2"	—
b1(E)	43	#6	43'-6"	—
b2(E)	205	#5	29'-3"	—
d(E)	308	#5	5'-7"	┌
d1(E)	308	#5	7'-11"	┌
e(E)	84	#4	19'-7"	—
e1(E)	32	#4	9'-11"	—
e2(E)	8	#4	30'-5"	—
e3(E)	8	#8	31'-5"	—
e4(E)	4	#8	9'-11"	—
m(E)	4	#6	18'-6"	—
m1(E)	4	#6	22'-2"	—
m2(E)	6	#6	19'-5"	—
m3(E)	6	#6	23'-1"	—
m4(E)	24	#6	9'-6"	—
m5(E)	10	#6	7'-0"	—
m6(E)	4	#6	2'-11"	—
s(E)	126	#5	6'-11"	└
s1(E)	82	#4	9'-6"	└
v(E)	84	#5	3'-4"	└
Reinforcement Bars, Epoxy Coated			Pound	46,450
Concrete Superstructure			Cu. Yds.	213.3

SUPERSTRUCTURE DETAILS
IL 47 OVER WEST FORK MAZON RIVER
FAP ROUTE 326 - SECTION 119BR-2
GRUNDY COUNTY
STATION 466+07.00
STRUCTURE NO. 032-0116

Eastport Business Center 1
100 Lanter Court, Suite 1
Collinsville, Illinois 62234
618-345-2200
Design Firm License No. 184.001115