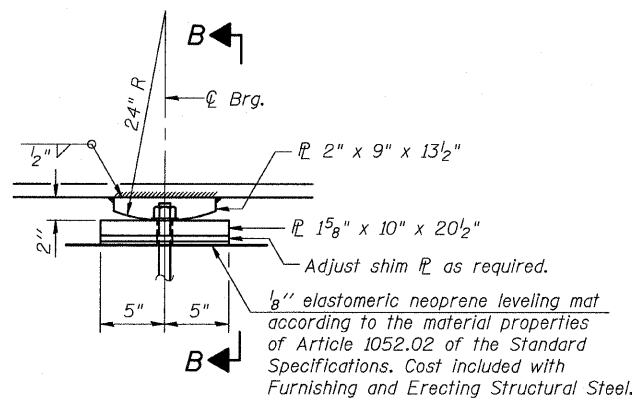


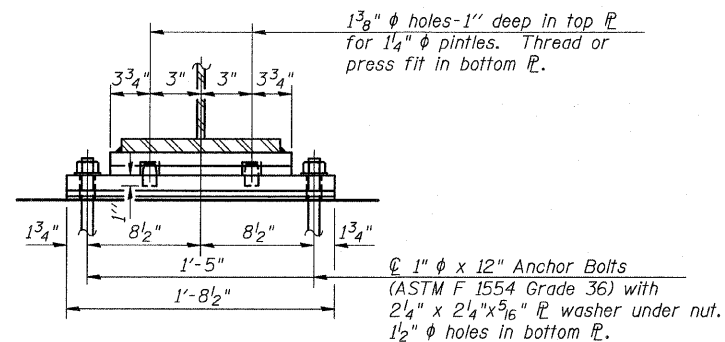
STATE OF ILLINOIS  
DEPARTMENT OF TRANSPORTATION

ROUTE NO.	SECTION	COUNTY	TOTAL SHEETS	SHEET NO.	SHEET NO. 14
FAP 326	119BR-2	GRUNDY	52	30	24 SHEETS
FED. ROAD DIST. NO. 7	ILLINOIS	FED. AID PROJECT-			

Contract #66688



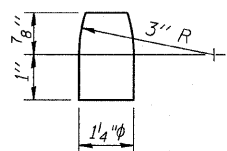
**ELEVATION AT PIER**



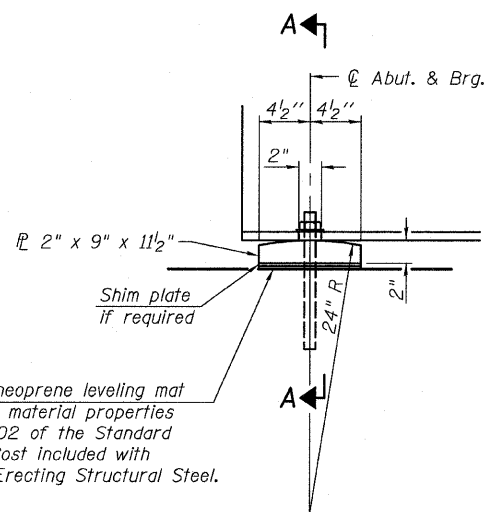
**SECTION B-B**

**FIXED BEARING AT PIER**

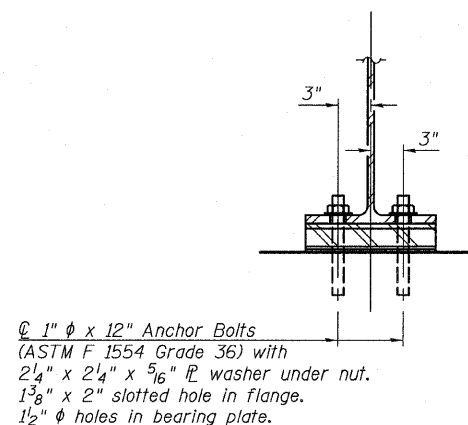
(6 Required)



**PINTLE**



**ELEVATION AT ABUTMENT**



**SECTION A-A**

**FIXED BEARING AT ABUTMENT**

(12 Required)

Notes:

- Anchor bolts shall be ASTM F 1554 all-thread (or an Engineer-approved alternate material) of the grade and diameter specified. ASTM A 307 Grade C anchor bolts may be used in lieu of ASTM F 1554 Grade 36 (36 ksi). The corresponding specified grade of AASHTO M 314 anchor bolts may be used in lieu of ASTM F 1554.
- Anchor bolts at fixed bearings may be either cast in place or installed in drilled holes after the supported members are in place.
- Drilled and set anchor bolts shall be installed according to Article 521.06 of the Standard Specifications.
- Two 1/8 inch adjusting shims shall be provided for each bearing in addition to all other plates or shims.
- Bearings shall be AASHTO M 270 Grade 50W Steel.

**BEARING DETAILS**  
**IL 47 OVER WEST FORK MAZON RIVER**  
**FAP ROUTE 326 - SECTION 119BR-2**  
**GRUNDY COUNTY**  
**STATION 466+07.00**  
**STRUCTURE NO. 032-0116**



Eastport Business Center 1  
100 Lanter Court, Suite 1  
Collinsville, Illinois 62234  
618-345-2200  
OATES ASSOCIATES  
Consulting Engineers Design Firm License No. 184.001115