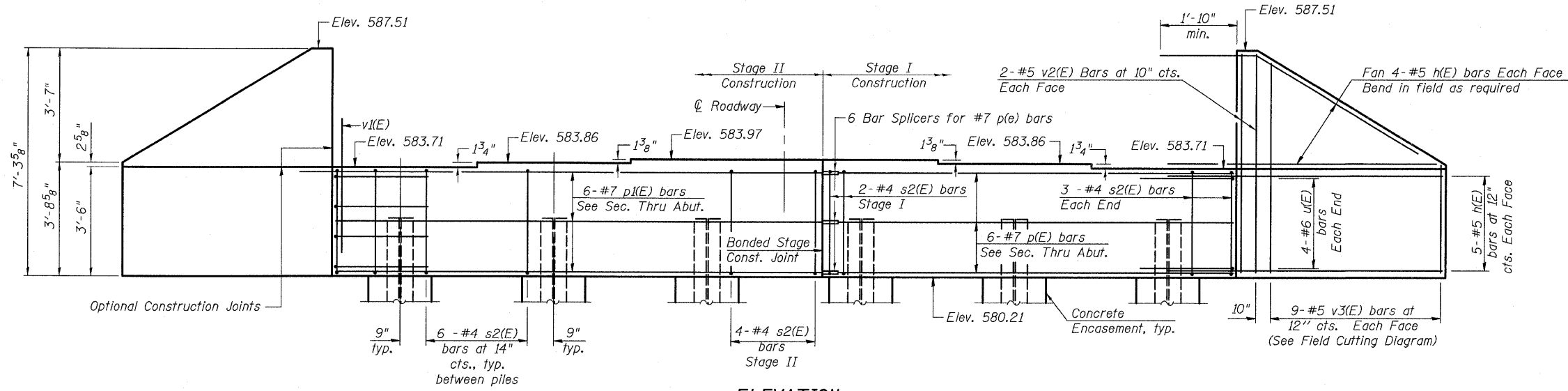


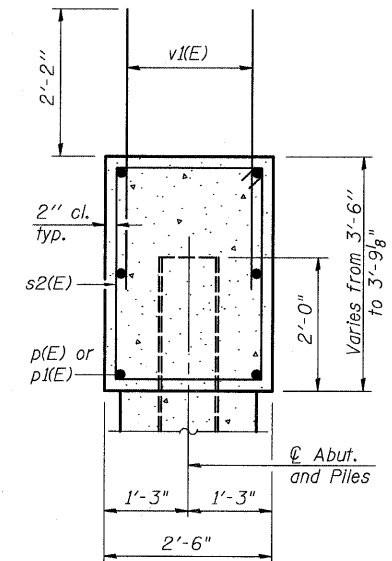
STATE OF ILLINOIS
DEPARTMENT OF TRANSPORTATION

ROUTE NO.	SECTION	COUNTY	TOTAL SHEETS	SHEET NO.	SHEET NO. 15
FAP 326	119BR-2	GRUNDY	52	31	24 SHEETS
FED. ROAD DIST. NO. 7	S.L. NUMBER	FED. AID PROJECT			

Contract #66688



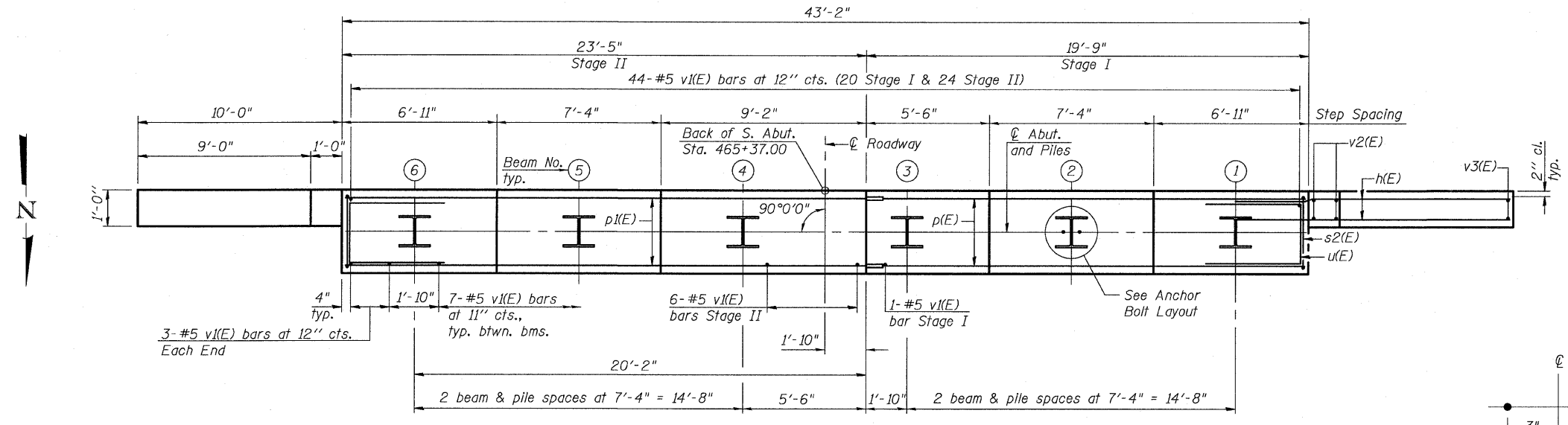
ELEVATION
(Looking South)



SEC. THRU ABUT.

BILL OF MATERIAL

Bar	No.	Size	Length	Shape
h(E)	36	#5	11'-8"	—
p(E)	6	#7	19'-5"	—
p(E)	6	#7	23'-1"	—
s2(E)	36	#4	11'-5"	□
u(E)	8	#6	9'-8"	□
v1(E)	85	#5	4'-4"	—
v2(E)	8	#5	6'-11"	—
v3(E)	18	#5	9'-11"	—
Structure Excavation		Cu. Yd.	119	
Concrete Structures		Cu. Yd.	18.7	
Concrete Encasement		Cu. Yd.	2.1	
Reinforcement Bars, Epoxy Coated		Pound	1,980	
Furnishing Steel Piles, HP12x53		Foot	295	
Driving Piles		Foot	295	
Test Pile, HP12x53		Each	1	
Pile Shoes		Each	6	

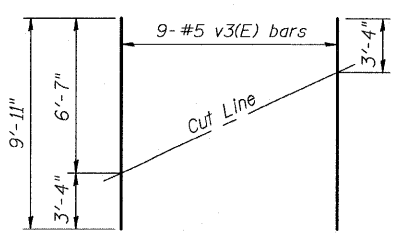


PLAN

ANCHOR BOLT LAYOUT ©

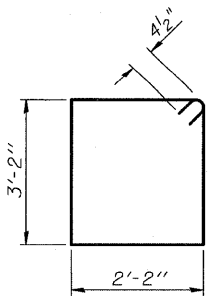
PILE DATA

Type: Steel HP12x53
Nominal Required Bearing: 419 kips
Factored Resistance Available: 139 kips
Est. Length: 59'
No. Production Piles: 5
No. Test Piles: 1

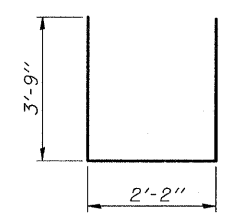


FIELD CUTTING DIAGRAM

Order v3(E) full length. Cut as shown and use remainder of bars in opposite face.



BAR s2(E)



BAR u(E)

- Notes:
- ① Pour steps monolithically with cap.
 - ② For details of Bar Splicers, see sheet 18 of 24.
 - ③ For details of piles and Concrete Encasement, see sheet 20 of 24.
 - ④ All edges shall have standard 3/4" chamfer.
 - ⑤ Place v1(E) bars to clear flange of beam.
 - ⑥ Space reinforcement in cap to miss anchor bolts.

SOUTH ABUTMENT DETAILS
IL 47 OVER WEST FORK MAZON RIVER
FAP ROUTE 326 - SECTION 119BR-2
GRUNDY COUNTY
STATION 466+07.00
STRUCTURE NO. 032-0116



Eastport Business Center 1
100 Lanter Court, Suite 1
Collinsville, Illinois 62234
618-345-2200
Design Firm License No. 184.001115