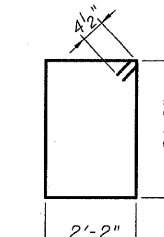
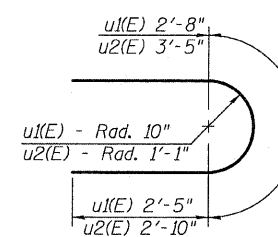
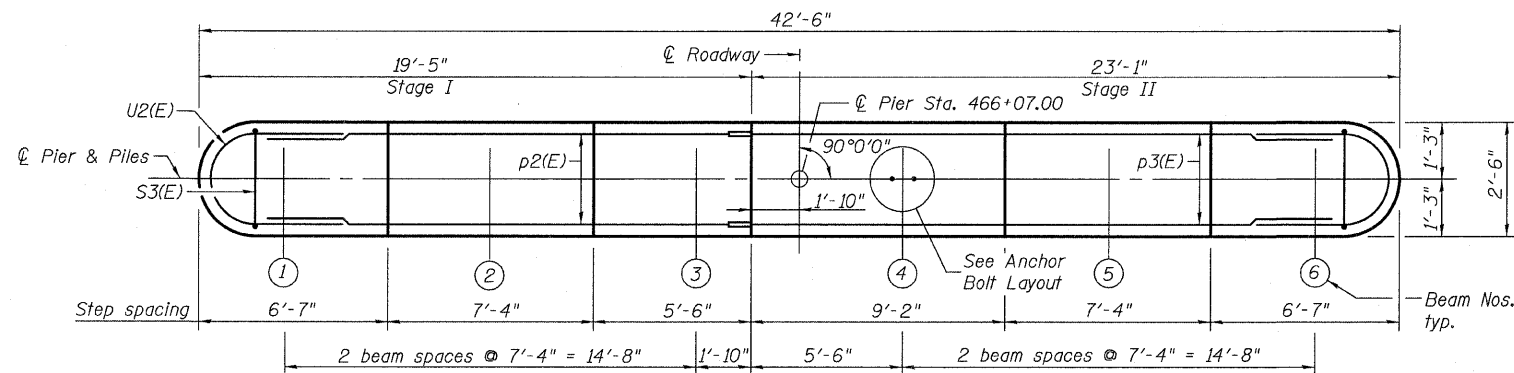
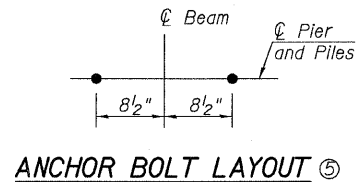


STATE OF ILLINOIS
DEPARTMENT OF TRANSPORTATION

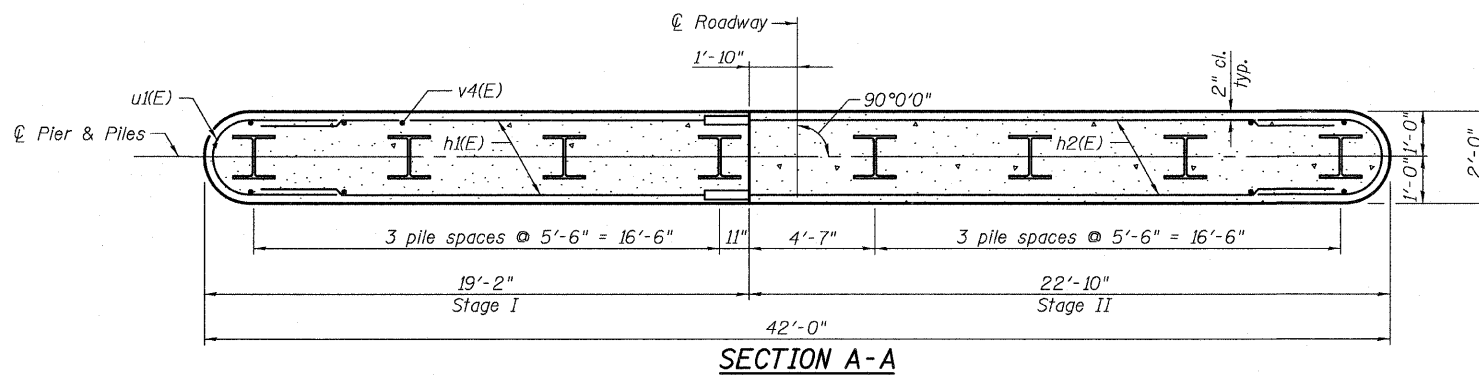
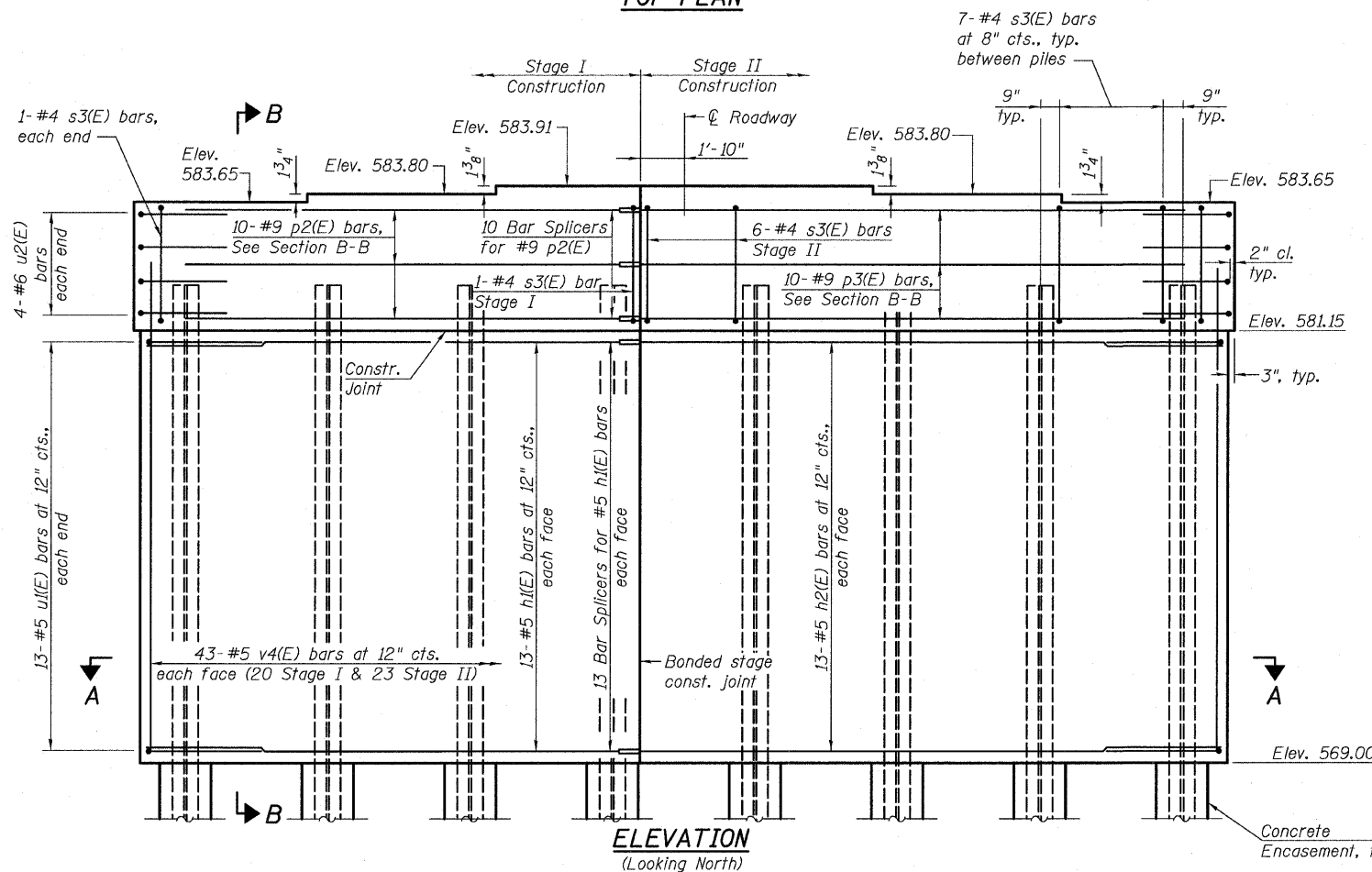
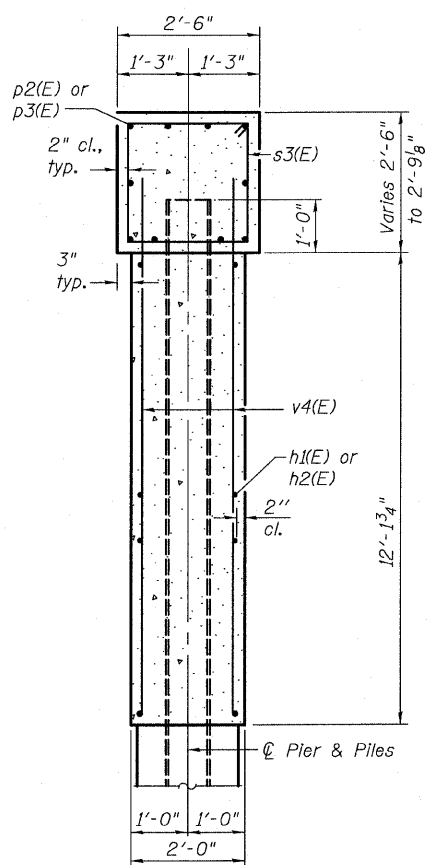
ROUTE NO.	SECTION	COUNTY	TOTAL SHEETS	SHEET NO.	SHEET NO. 17 24 SHEETS
FAP 326	119BR-2	GRUNDY	52	33	
FED. ROAD DIST. NO. 7		ILLINOIS	FED. AID PROJECT-		

Contract #66688



BILL OF MATERIAL

Bar	No.	Size	Length	Shape
h1(E)	26	#5	18'-0"	—
h2(E)	26	#5	21'-8"	—
p2(E)	10	#9	18'-0"	—
p3(E)	10	#9	21'-8"	—
s3(E)	51	#4	9'-5"	□
u1(E)	26	#5	7'-6"	U
u2(E)	8	#6	9'-1"	U
v4(E)	86	#5	13'-7"	—
Structure Excavation		Cu. Yd.	53	
Concrete Structures		Cu. Yd.	47.8	
Concrete Encasement		Cu. Yd.	2.8	
Reinforcement Bars, Epoxy Coated		Pound	4,280	
Furnishing Steel Piles, HP12x63		Foot	413	
Driving Piles		Foot	413	
Test Pile, HP12x63		Each	1	
Pile Shoes		Each	8	
Underwater Structure Excavation Protection, Location 1		Each	1	



PILE DATA
Type: Steel HP12X63
Nominal Required Bearing: 497 Kips
Factored Resistance Available: 165 Kips
Est. Length: 59'
No. Production Piles: 7
No. Test Piles: 1

- Notes:
- ① Pour steps monolithically with cap.
 - ② For details of Bar Splicers, see sheet 18 of 24.
 - ③ For details of piles and Concrete Encasement, see sheet 20 of 24.
 - ④ All edges shall have standard 3/4" chamfer.
 - ⑤ Space reinforcement in cap to miss anchor bolts.
 - ⑥ If a portion of the pier wall or concrete encasement is under water, reinforcement may be placed underwater into forms. Concrete shall be tremied according to Article 503.08 of the Standard Specifications to an elevation of 1'-0" above the water line at the time of construction.

PIER DETAILS
IL 47 OVER WEST FORK MAZON RIVER
FAP ROUTE 326 - SECTION 119BR-2
GRUNDY COUNTY
STATION 466+07.00
STRUCTURE NO. 032-0116



Eastport Business Center 1
100 Lanter Court, Suite 1
Collinsville, Illinois 62234
618-345-2200
Design Firm License No. 184.001115