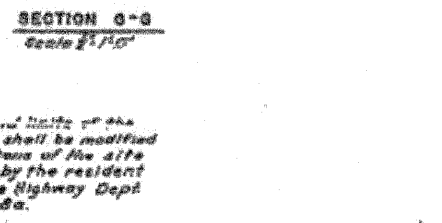
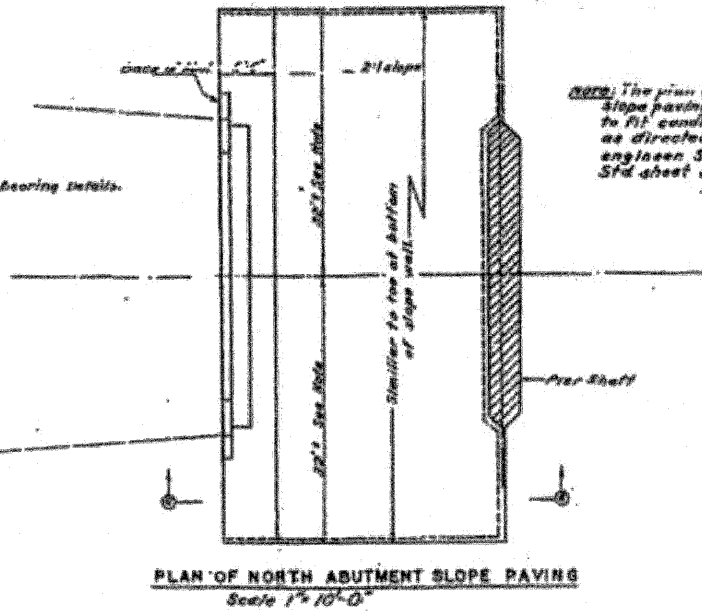
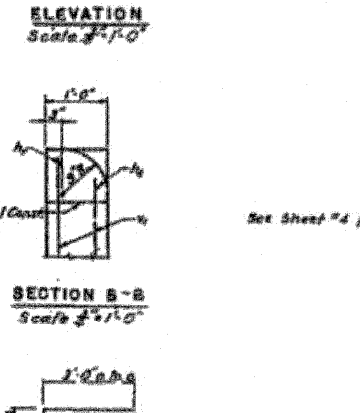
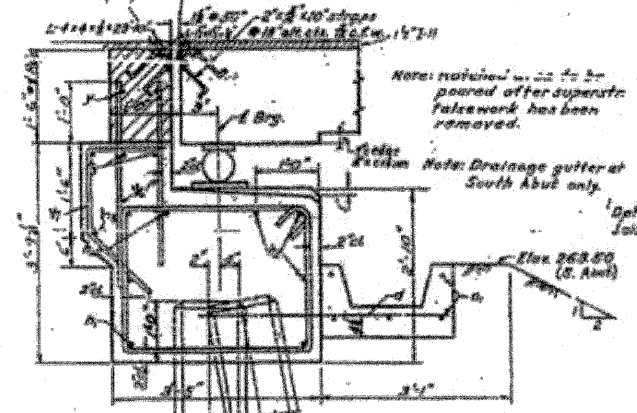
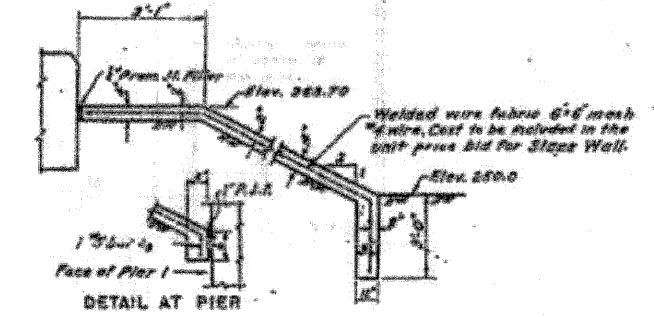
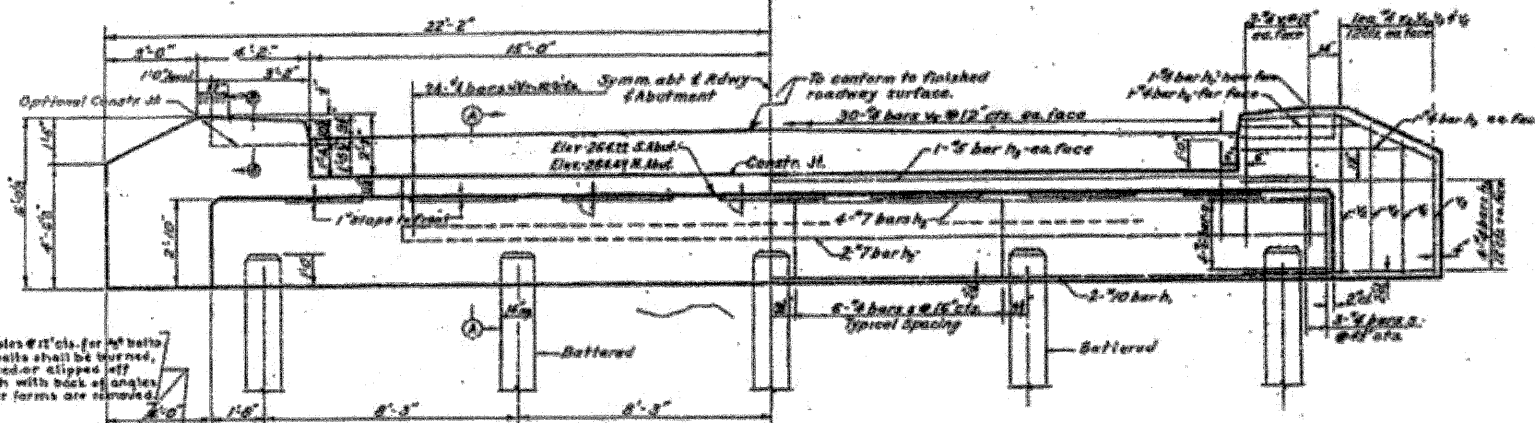
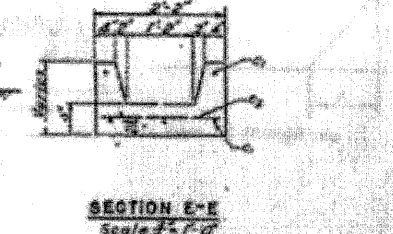
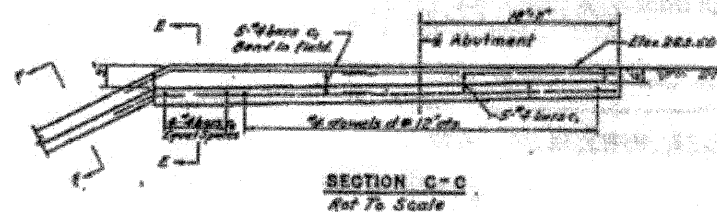
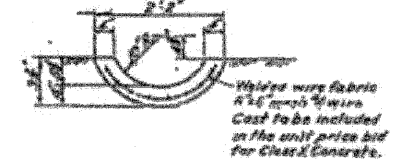
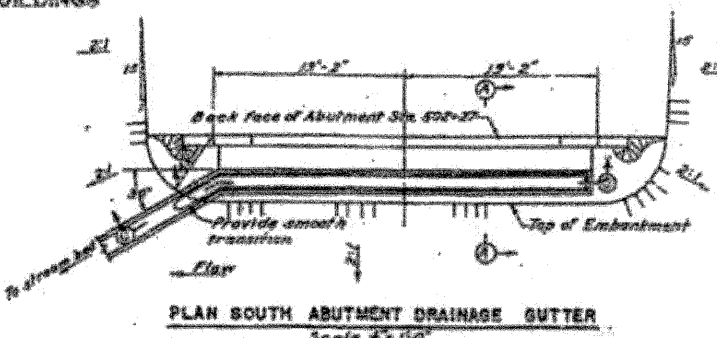
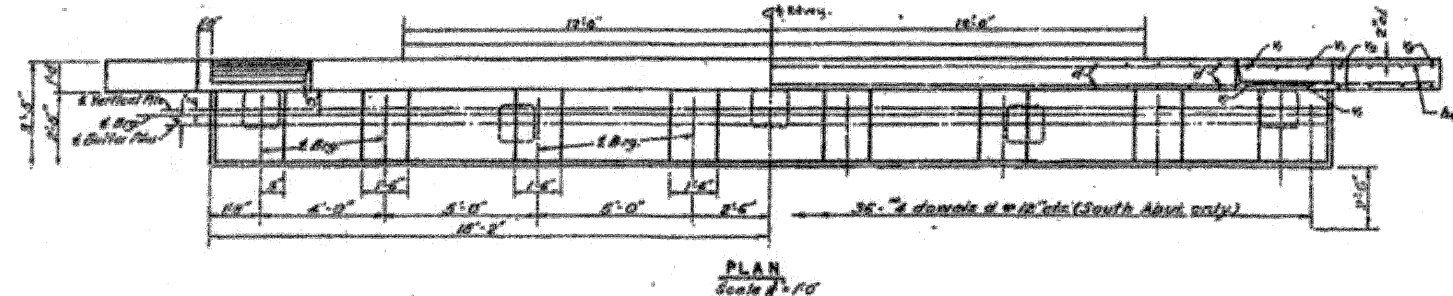
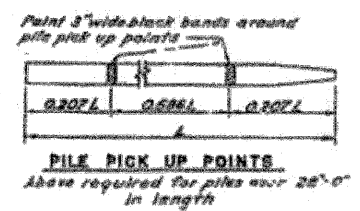
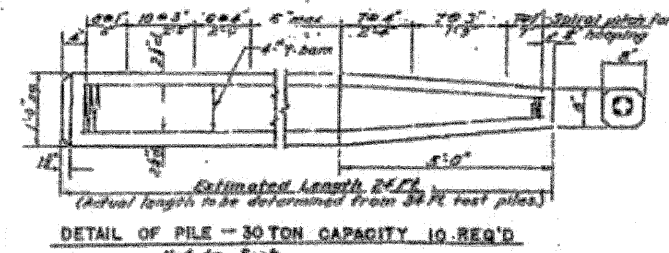


STATE OF ILLINOIS
DEPARTMENT OF PUBLIC WORKS & BUILDINGS
DIVISION OF HIGHWAYS

DATE	BY	PROJECT	SHEET NO.	TOTAL SHEETS
11/18/88	W.D.P.	Grundy	52	52
SHEETS				



BILL OF MATERIAL
2 ABUTMENTS & GUTTERS

BAR	NO	SIZE	LENGTH	SHAPE
A	4	#5	18'-0"	
B	12	#7	38'-0"	
C	4	#5	35'-0"	
D	40	#4	4'-0"	
E	4	#4	6'-0"	
F	4	#4	7'-0"	
G	24	#4	4'-0"	
H	8	#4	5'-0"	
I	8	#4	4'-0"	
J	3	#4	4'-0"	
K	120	#4	4'-0"	
L	48	#4	4'-0"	
M	60	#4	11'-0"	
N	16	#6	5'-0"	
O	36	#4	4'-0"	
P	4	#4	27'-0"	
Q	10	#4	22'-0"	
R	4	#4	1'-0"	
S	1	#4	34'-0"	
T	4	#4	25'-0"	

Class X Concrete cu. yds. 43.3
Reinforcement Bars lbs. 3589
Class A Excavator for Steel cu. yds. 52
Precast Concrete Piles (54) lin. ft. 182
Precast Concrete Test Piles (34) cu. yds. 2
Slope Wall sq. yds. 255
Structural Steel lbs. 1670

Note: All bars shall be round ASTM A 605-48. The size number is the number of inches in the nominal diameter.

PROJ. E-204163
ABUTMENTS & GUTTERS
S.B.I. RT. 47 SEC. 112-8Y
GRUNDY CO.
STA. 501+58

DESIGNED W.D.P.
CHECKED F.J.W.
DRAWN W.D.P.
CHECKED F.J.W.
DATE Feb. 17, 1988
APPROVED [Signature]