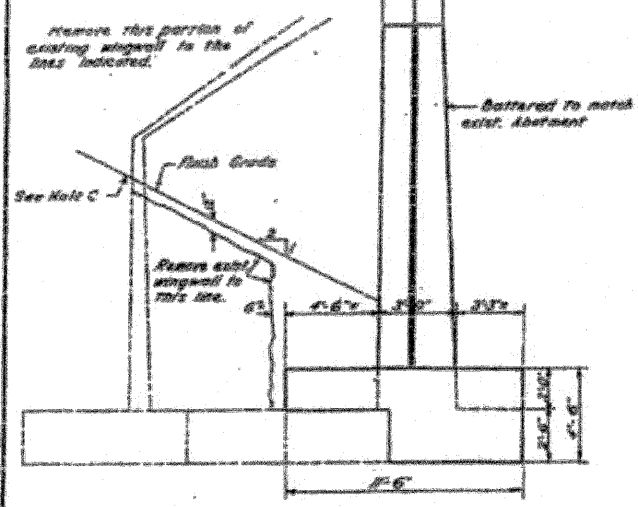


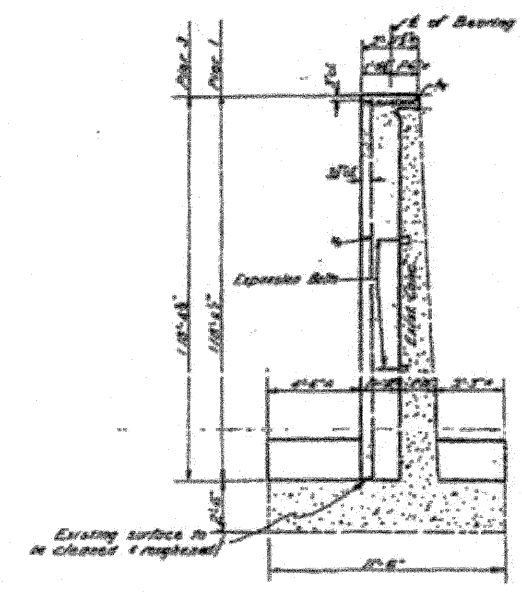
STATE OF ILLINOIS  
DEPARTMENT OF PUBLIC WORKS & BUILDINGS  
DIVISION OF HIGHWAYS

DESIGNER	DATE	SCALE	SHEET NO.	TOTAL SHEETS
J.M. BRUCE	Feb 17 1954	3/4" = 1'-0"	54	58
SHEET NO. 4 OF 5 SHEETS				

NOTE C: See Sheet No. 3 for slope paving of North Abutment.

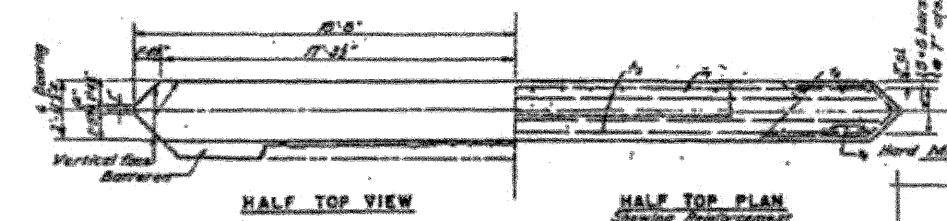


END VIEW  
Scale: 1/4" = 1'-0"



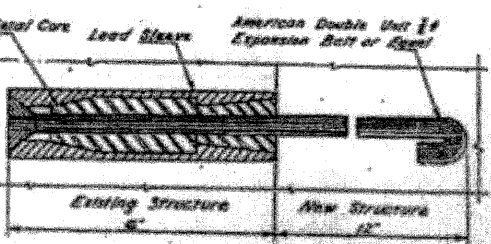
SECTION A-A  
Scale: 1/4" = 1'-0"

NOTE A: Remove this part of existing wingwall to the line 6" below finished grade. See end-view.  
NOTE B: Remove this part of existing wingwall to the top of the existing footing.

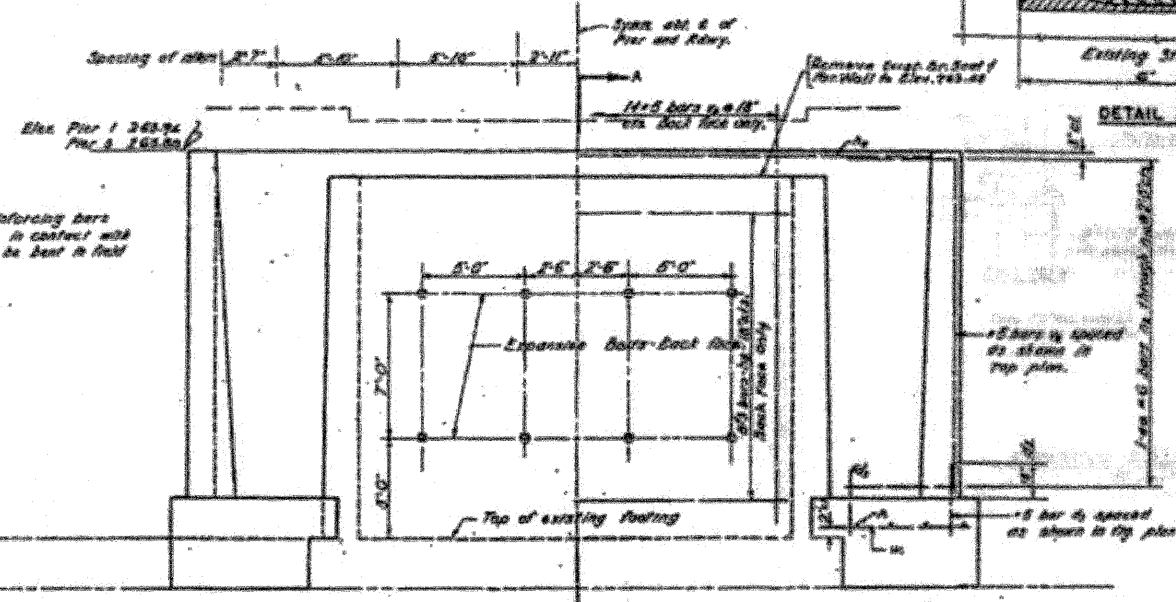
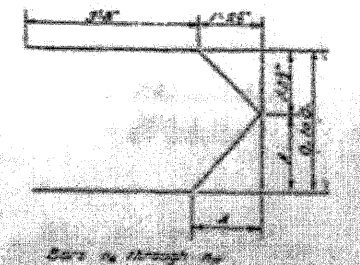


HALF TOP VIEW  
Scale: 3/4" = 1'-0"

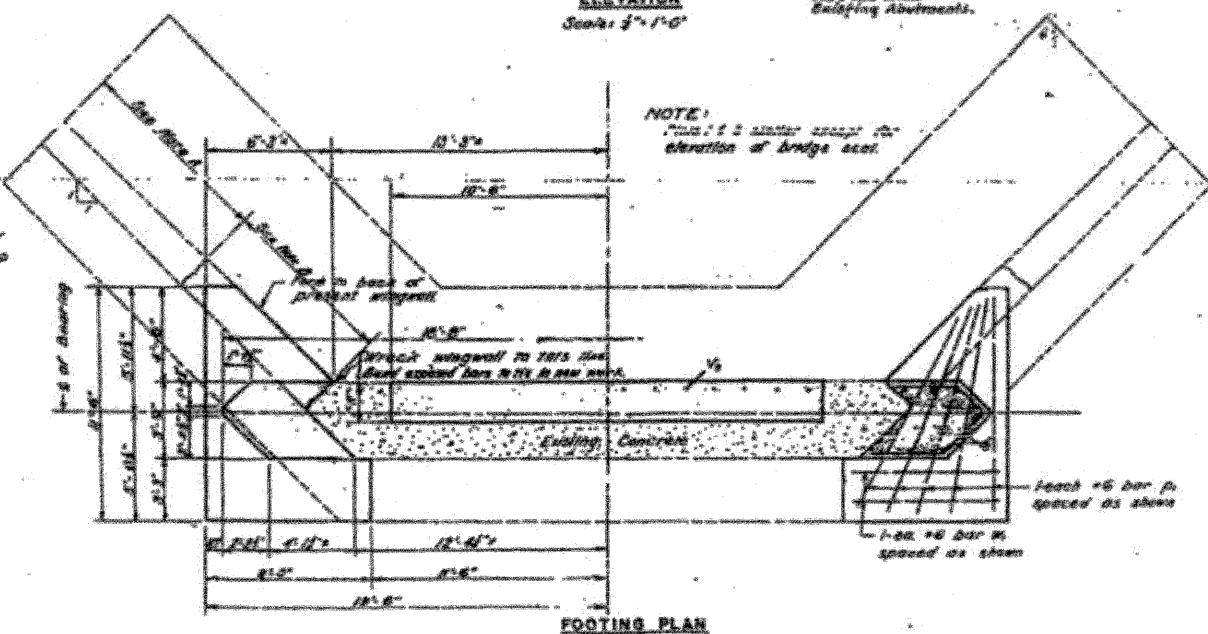
HALF TOP PLAN  
Showing Reinforcement  
Scale: 3/4" = 1'-0"



DETAIL OF EXPANSION BOLT



ELEVATION  
Scale: 3/4" = 1'-0"



FOOTING PLAN  
Scale: 3/4" = 1'-0"

NOTE: This is a similar section to elevation of bridge seat.

BILL OF MATERIALS

ITEM	QTY	UNIT	PRICE	TOTAL
CLASS A CONCRETE	122.8	CU YD	122.8	122.8
REINFORCEMENT BARS	100	TONS	2880	2880
EXPANSION BOLTS	10	TONS	10	10
CONCRETE REMOVAL	51.9	CU YD	51.9	51.9
CLASS B GRAVEL FOR STREETS	10	CU YD	10	10
CLASS B GRAVEL FOR SHOULDER	110	CU YD	110	110

DESIGNED: J.M. BRUCE  
CHECKED: W.D. BRUCE  
DRAWN: J.M. BRUCE (CAP)  
CHECKED: W.D. BRUCE  
DATE: Feb 17 1954  
APPROVED: R.L. [Signature]

PROJ. P-204(8)  
PIER 1-3  
SBL RT. 47 SEC. 118B  
GRUNDY CO.  
STA. 501+58