

Bench Mark: Chiseled square on South East corner of existing structure. Sta 705+69, 20' Rt. Elev. 572.30

Existing Structure: S.N. 032-0072 Built originally in 1927 and modified in 1954 as a 2 span, cast in place concrete flat slab: 41'-7" long and clear width of 30'-0".

No Salvage. The existing structure will be removed as required. One lane of traffic shall be maintained utilizing Stage Construction.

STATE OF ILLINOIS
DEPARTMENT OF TRANSPORTATION

ROUTE NO.	SECTION	COUNTY	TOTAL SHEETS	SHEET NO.	SHEET NO. 1
F.A.P. 326	118 BR	Grundy	35	16	6 SHEETS
FED. ROAD DIST. NO. 7	ILLINOIS	FED. AID PROJECT			

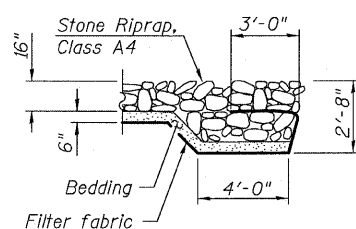
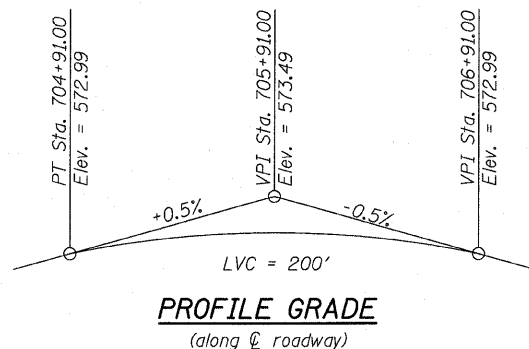
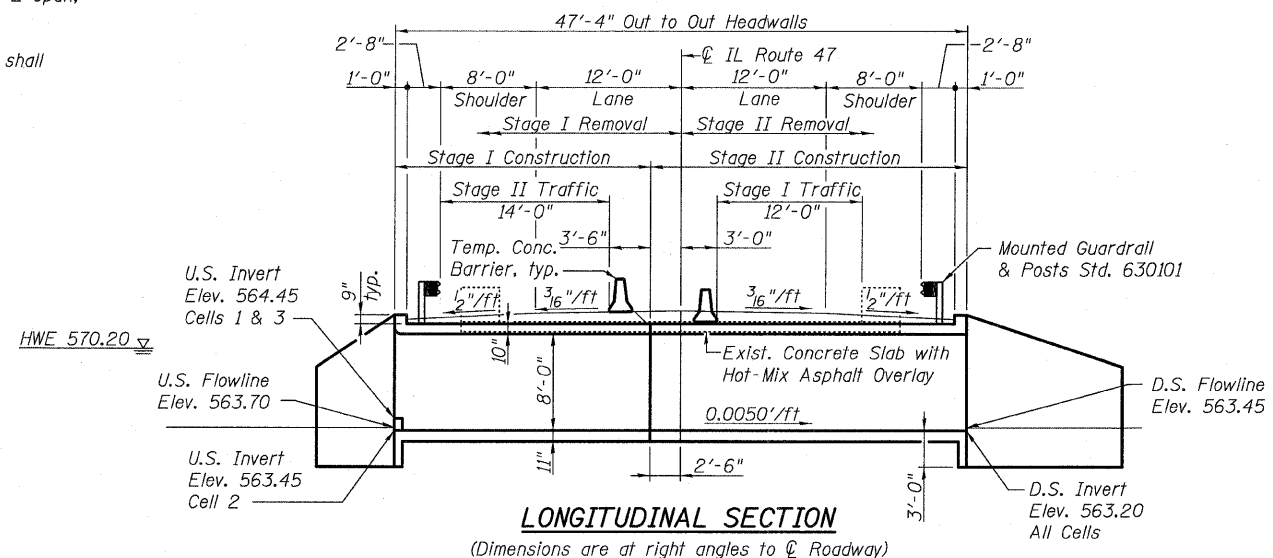
Contract #66689

TOTAL BILL OF MATERIAL

ITEM	UNIT	TOTAL
Porous Granular Embankment	Cu. Yd.	306
Stone Riprap, Class A4	Sq. Yd.	101
Filter Fabric	Sq. Yd.	101
Removal of Existing Structures	Each	1
Structure Excavation	Cu. Yd.	572
Reinforcement Bars	Pound	54,150
Bar Splicers	Each	170
Temporary Sheet Piling	Sq. Ft.	526
Name Plates	Each	1
Concrete Box Culverts	Cu. Yd.	202.4
Temporary Support System	Each	2

INDEX OF SHEETS

Sheet No.	Description
1	General Plan
2	General Notes & Structure Details
3	Structure Details
4	Temporary Concrete Barrier for Stage Construction
5	Bar Splicer Assembly Details
6	Boring Logs

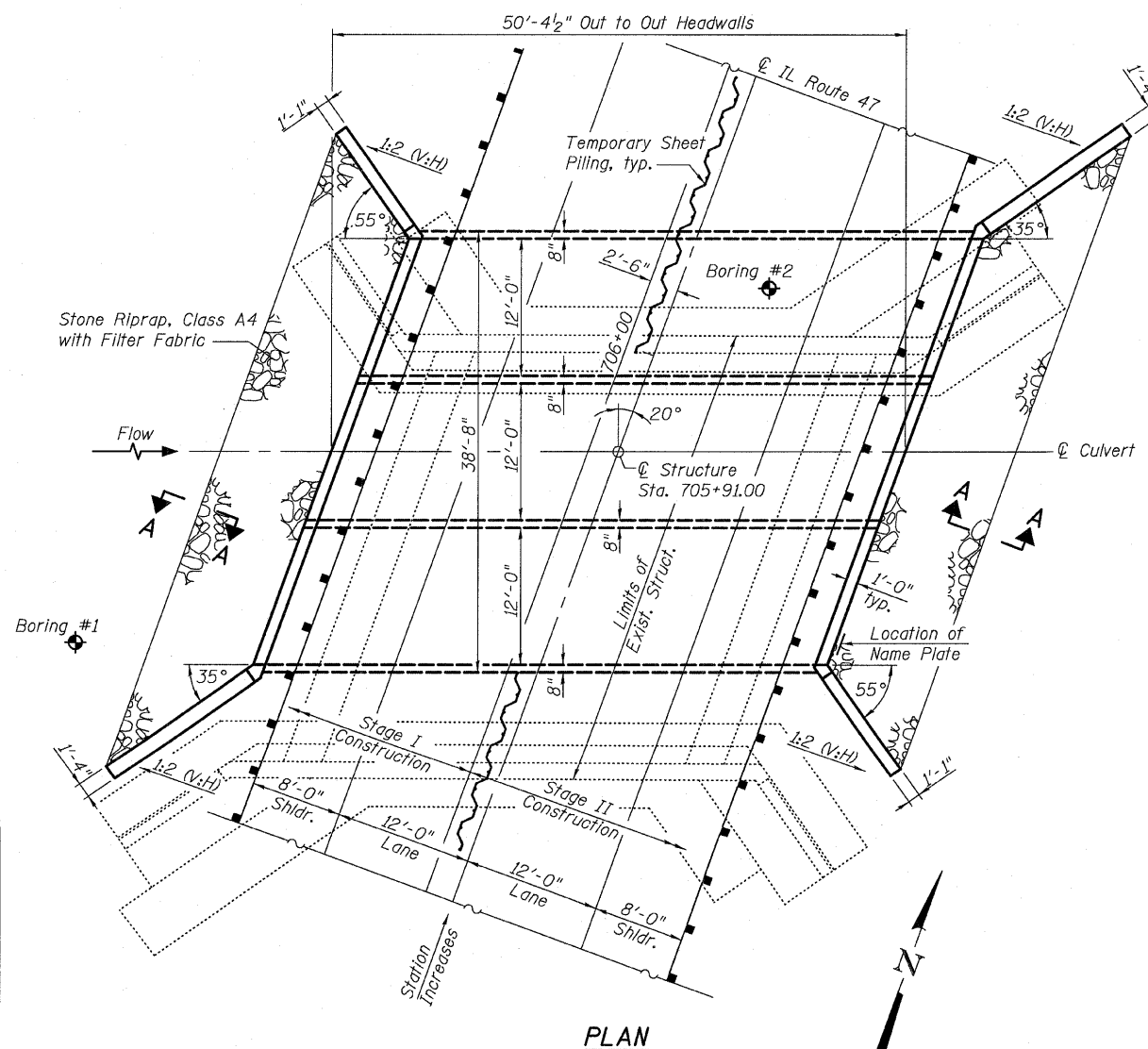


SECTION A-A

WATERWAY INFORMATION

Drainage Area = 5.2 sq. mi. Low Grade Elev. 571.6 @ Sta. 715+00

Flood	Freq. Yr.	Q C.F.S.	Opening Sq. Ft.		Nat. H.W.E.	Head - Ft.		Headwater El.	
			Exist.	Prop.		Exist.	Prop.	Exist.	Prop.
Design	10	498	153	189	570.0	1.1	1.0	571.1	571.0
0'top (Exist)	50	734	162	198	570.2	1.4	1.2	571.6	571.4
0'top (Prop)	90	810	-	201	570.3	-	1.3	-	571.6
Base	100	830	166	203	570.4	1.9	1.3	572.3	571.7



PLAN

DESIGN SPECIFICATIONS

2002 AASHTO

LOADING HS20-44

Allow 50#/sq. ft. for future wearing surface.

DESIGN STRESSES

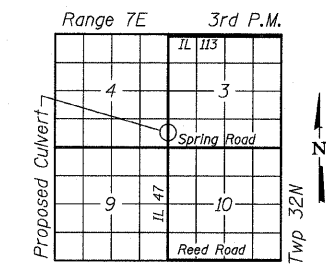
FIELD UNITS

f'c = 3,500 psi
fy = 60,000 psi (Reinforcement)

STATION 705+91
BUILT 200_ BY
STATE OF ILLINOIS
F.A.P. RTE. 326 SEC. 118 BR
LOADING HS20
STRUCTURE NO. 032-2009

NAME PLATE

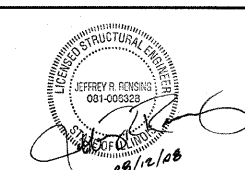
See Std. 515001



LOCATION SKETCH

APPROVED
FOR STRUCTURAL ADEQUACY ONLY

Ralph E. Anderson
ENGINEER OF BRIDGES AND STRUCTURES



EXPIRES 11/30/2008

GENERAL PLAN
IL ROUTE 47 OVER DRAINAGE DITCH
F.A.P. 326 - SECTION 118 BR
GRUNDY COUNTY
STA. 705+91.00
STRUCTURE NUMBER 032-2009



Eastport Business Center 1
100 Lanter Court, Suite 1
Collinsville, Illinois 62234
618-345-2200
Design Firm License No. 184.001115