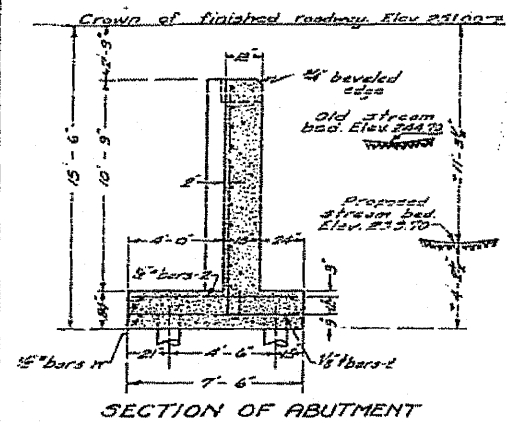


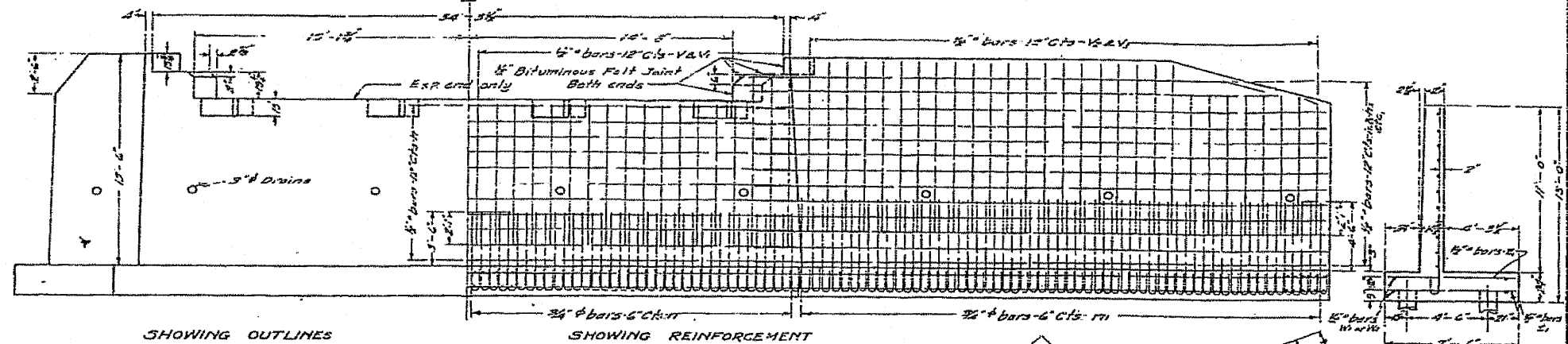
STATE OF ILLINOIS
DEPARTMENT OF PUBLIC WORKS & BUILDINGS
DIVISION OF HIGHWAYS

Sheet No 2
2 Sheets

Existing 2-span structure, 23 spans, 14 roadway,
shall be removed by the contractor.
B.M. No. 23 N.W. in P.D. of cross fence, left
Sta 260+70 Elev. 249.22



SECTION OF ABUTMENT

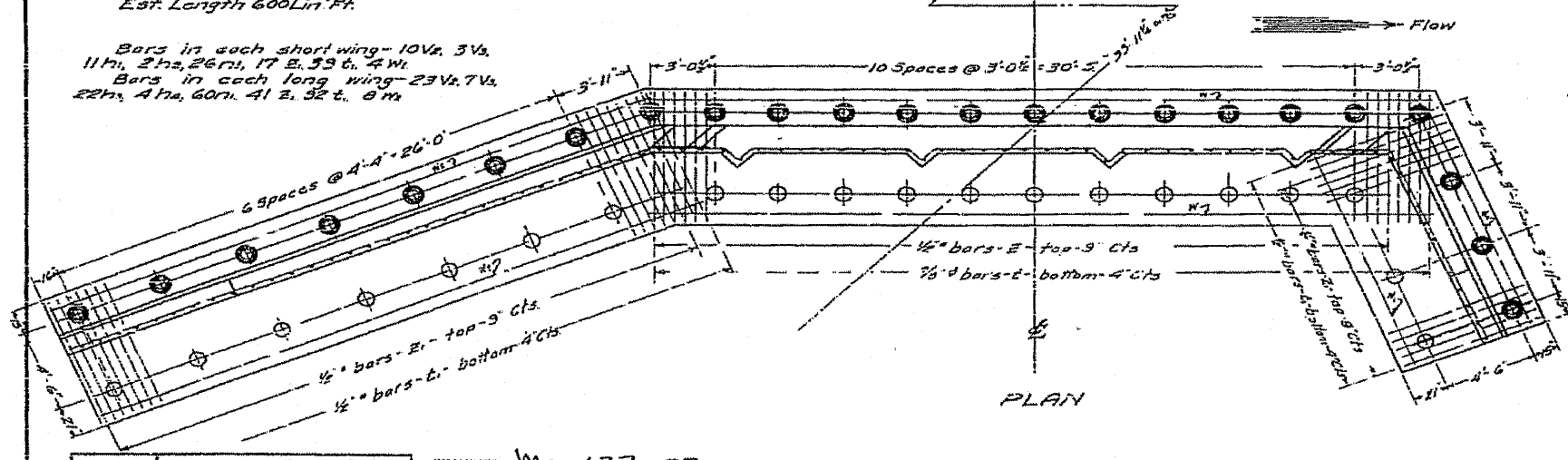


FRONT ELEVATION

Note: All reinforcing steel shall be
wired securely in place before con-
crete is poured.
Class A concrete shall be used
throughout.
Proportions 1: 2 1/2: 4.

- 15 Ton Untreated Pile
12' Butt 10' Tip, 46 Regd
Est. Length 320 Lin. Ft.
- 10 Ton Untreated Pile
10' Butt 8' Tip, 40 Regd
Est. Length 600 Lin. Ft.

Bars in each short wing - 10V, 3V,
11W, 2H, 26R, 17E, 33C, 4W,
Bars in each long wing - 23V, 7V,
22H, 4H, 60R, 41E, 32C, 8W



PLAN

BILL OF MATERIAL

Bars	No.	Size	Length
V	60	1/2"	9'-0"
V1	10	1/2"	10'-8"
V2	63	1/2"	10'-6"
V3	20	1/2"	9'-0"
H	44	1/2"	19'-6"
H1	22	1/2"	13'-6"
H2	4	1/2"	12'-0"
H3	44	1/2"	17'-0"
H4	8	1/2"	15'-6"
R	140	3/8"	6'-9"
R1	172	3/8"	7'-9"
E	224	3/8"	7'-5"
E1	262	3/8"	7'-5"
E2	32	3/8"	7'-5"
C	114	3/8"	7'-5"
W	16	1/2"	13'-0"
W1	3	1/2"	13'-0"
W2	16	1/2"	16'-6"

Reinforcing Steel - Lbs. 19240
Class A Concrete - CuBds - 1730

COMPUTED	— <i>M. G. P.</i>
CHECKED	— <i>M. G. P.</i>
DRAWN	— <i>M. G. P.</i>
CHECKED	— <i>M. G. P.</i>
SPECIAL	—
ASSEMBLED	—
CHECKED	—

EXAMINED *May 27 1927*
A. J. Bunch
BRIDGE ENGINEER
DESIGNED BY *M. G. P.*
APPROVED *Frank T. Schott*
CHIEF HIGHWAY ENGINEER

REVISED PLAN
STATION 261+87
S. E. I. ROUTE 47
SEC 118 B - GRUNDY CO.