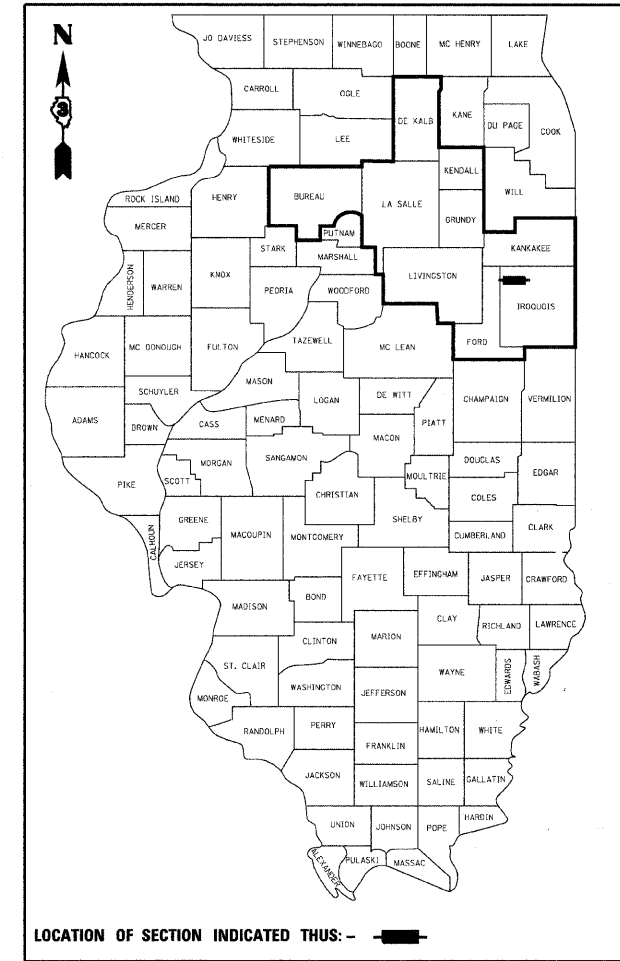


F.A.P. RTE.	SECTION	COUNTY	TOTAL SHEETS	SHEET NO.
681	116 BR-1	IROQUOIS	28	1
FED. ROAD DIST. NO.	ILLINOIS	CONTRACT NO. 66730		

D-93-048-06 P-93-035-04



LOCATION OF SECTION INDICATED THUS: - [black rectangle] -

STATE OF ILLINOIS  
DEPARTMENT OF TRANSPORTATION  
DIVISION OF HIGHWAYS

**PROPOSED  
HIGHWAY PLANS**

FAP ROUTE 681 (IL 116)  
SECTION 116 BR-1  
PROJECT ACBRF-0681(035)  
IROQUOIS COUNTY

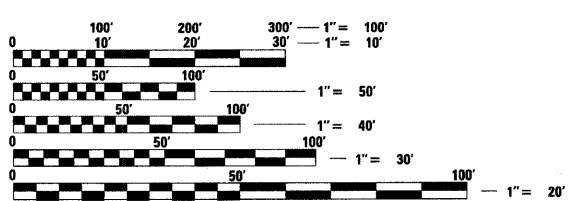
C-93-087-07

CULVERT REPLACEMENT OVER LANGAN CREEK,  
6.5 MILES WEST OF I-57

INDEX OF SHEETS

- 1 COVER SHEET
- 2 STATE STANDARDS, GENERAL NOTES & COMMITMENTS
- 3 SUMMARY OF QUANTITIES
- 4-5 TYPICAL SECTIONS
- 6 SCHEDULE OF QUANTITIES
- 7 SURVEY TIES AND BENCHMARKS
- 8 PLAN AND PROFILE
- 9 DETOUR PLAN
- 10 EROSION CONTROL PLAN
- 11-24 CULVERT PLANS S.N. 038-2022
- 25 MISCELLANEOUS DETAILS
- 26-28 CROSS SECTIONS

FOR LIST OF STANDARDS, SEE SHEET NO. 2

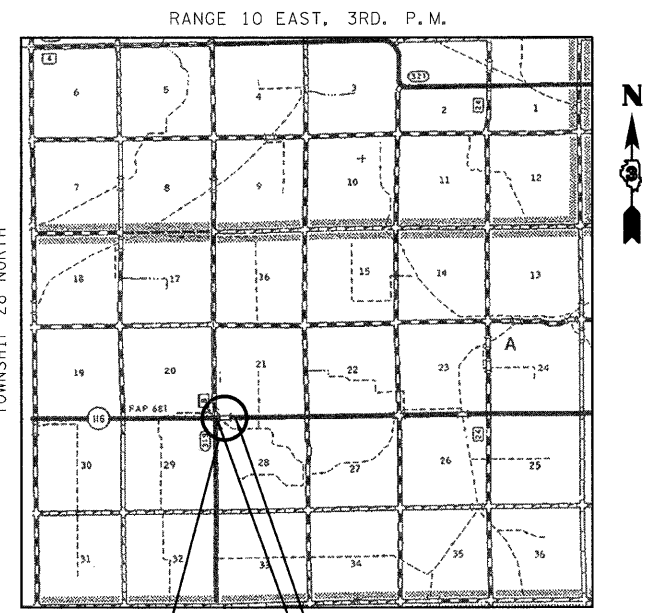


FULL SIZE PLANS HAVE BEEN PREPARED USING STANDARD ENGINEERING SCALES. REDUCED SIZED PLANS WILL NOT CONFORM TO STANDARD SCALES. IN MAKING MEASUREMENTS ON REDUCED PLANS, THE ABOVE SCALES MAY BE USED.

J.U.L.I.E.  
JOINT UTILITY LOCATION INFORMATION FOR EXCAVATION  
1-800-892-0123  
OR 811

DISTRICT 3 NO. (815) 434-6131  
PROJECT ENGINEER: JOSEPH KANNEL  
UNIT CHIEF: MICHELE LINDEMANN  
CONTRACT NO. 66730

**Farnsworth**  
GROUP  
2709 McGraw Drive  
Bloomington, Illinois 61704  
309/663-8435, 309/663-1571 fax

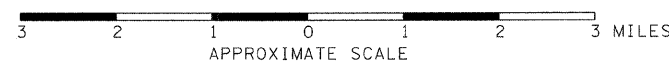


S.N. 038-2022 STATION 317+52.00  
CULVERT REPLACEMENT OVER  
LANGAN CREEK

IMPROVEMENT ENDS  
STA. 319+98.30

IMPROVEMENT BEGINS  
STA. 316+23.50

LOCATION MAP



GROSS LENGTH = 374.8 FT. = 0.071 MI.  
NET LENGTH = 374.8 FT. = 0.071 MI.



Mark S. Wylie Date 4/14/08  
MARK S. WYLIE  
REGISTERED PROFESSIONAL ENGINEER  
NO. 062-043716  
EXPIRATION 11/30/09

DESIGN DESIGNATION

SPEED LIMIT: 55 MPH  
ADT = 950 (2005) 1200 (2024)  
PV = 76.8%  
SU = 7.4%  
MU = 15.8%

HIGHWAY CLASSIFICATION

RURAL MINOR ARTERIAL

STATE OF ILLINOIS  
DEPARTMENT OF TRANSPORTATION  
DIVISION OF HIGHWAYS

SUBMITTED 8-11-08 20 08

*Henry Pagon*  
DEPUTY DIRECTOR OF HIGHWAYS, REGION ENGINEER

October 3, 20 08  
*Eric E. Horn*  
ENGINEER OF DESIGN AND ENVIRONMENT

October 3, 20 08  
*Christie M. Reed*  
DIRECTOR OF HIGHWAYS, CHIEF ENGINEER

**PRINTED BY THE AUTHORITY  
OF THE STATE OF ILLINOIS**