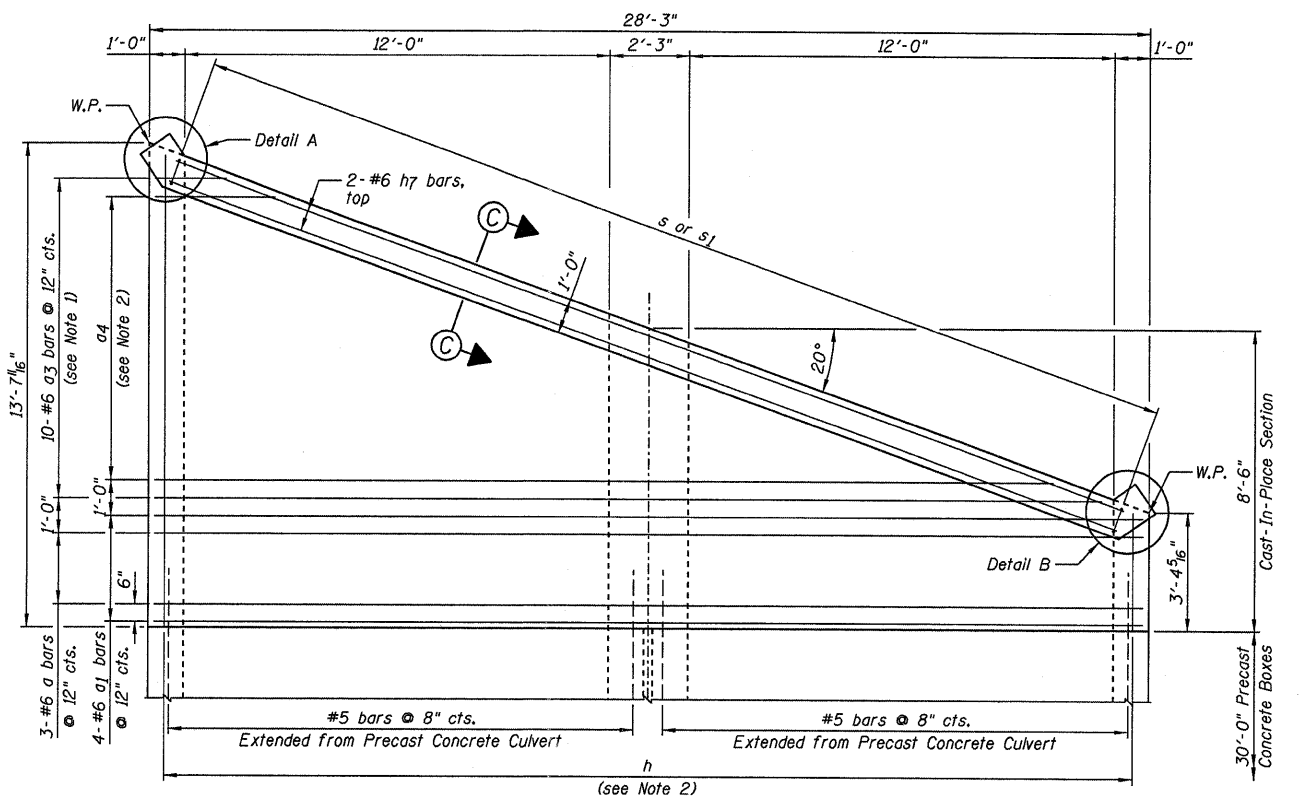
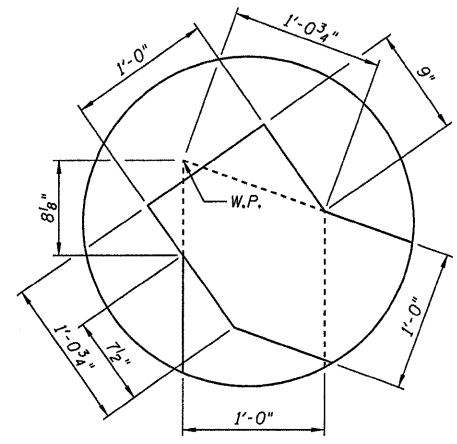
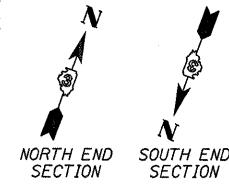


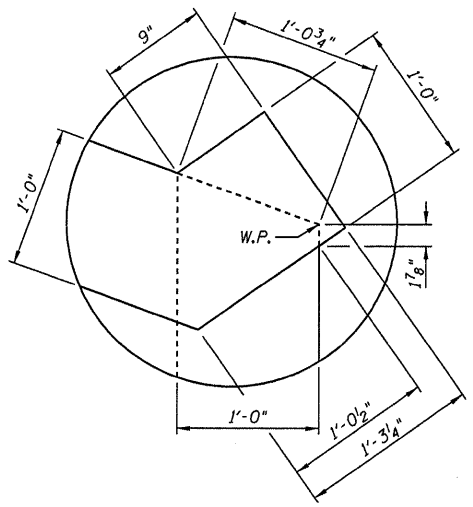
TOP MAT OF REINFORCEMENT PLAN



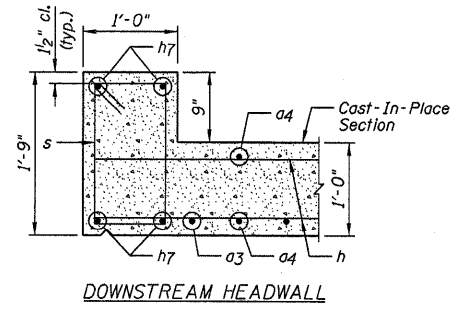
BOTTOM MAT OF REINFORCEMENT PLAN



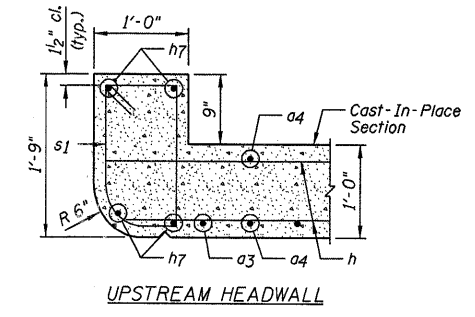
DETAIL A



DETAIL B



DOWNSTREAM HEADWALL



UPSTREAM HEADWALL

SECTION C-C

NOTES:

- 1.) Order a3 bars full length, cut according to Bar Cutting Diagram on Sheet B3. Use remainder of bars in opposite end.
- 2.) Order a4 and h bars full length, cut according to Bar Cutting Diagram on Sheet B3. Use remainder of bars in opposite mat.
- 3.) For Bill of Material, see Sheet B3.
- 4.) W.P. denotes Working Point.

FILE NAME =	USER NAME = carpenterdj	DESIGNED - JML	REVISED -	STATE OF ILLINOIS DEPARTMENT OF TRANSPORTATION	CAST-IN-PLACE CONCRETE CULVERT TOP SLAB PLANS AND SECTIONS	F.A.P. RTE.	SECTION	COUNTY	TOTAL SHEETS	SHEET NO.	
c:\projects\lep03504\consult\14-15_007021	8.00_b04-b05_slabs.dgn	DRAWN - DJM	REVISED -			681	116 BR-1	ILLINOIS	28	14	
PLLOT SCALE = 2.6667 ' / IN.	CHECKED - MSW	REVISED -	REVISED -			CONTRACT NO. 66730					
PLLOT DATE = Aug 07, 2008 - 09:10:05 AM	DATE - 04/09/08	REVISED -	REVISED -			FED. ROAD DIST. NO. 3 ILLINOIS FED. AID PROJECT					
FARNSWORTH GROUP, INC.				CONSULTING ENGINEERS - 2709 MCGRAW DRIVE BLOOMINGTON, ILLINOIS 61704 (309) 663-8435 / (309) 663-1571 FAX				SCALE: SHEET NO. B4 OF 14 SHEETS STA. TO STA.			